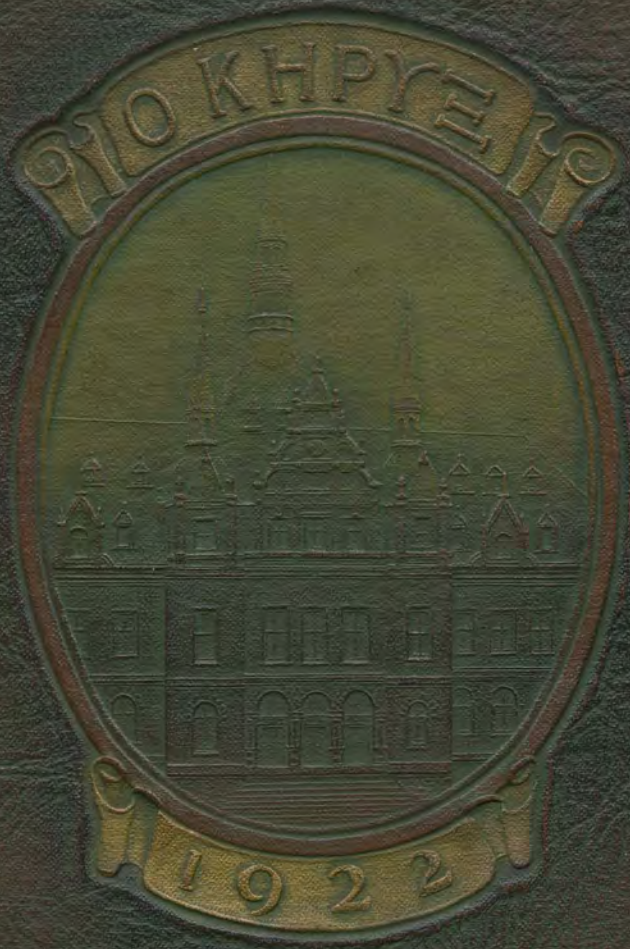
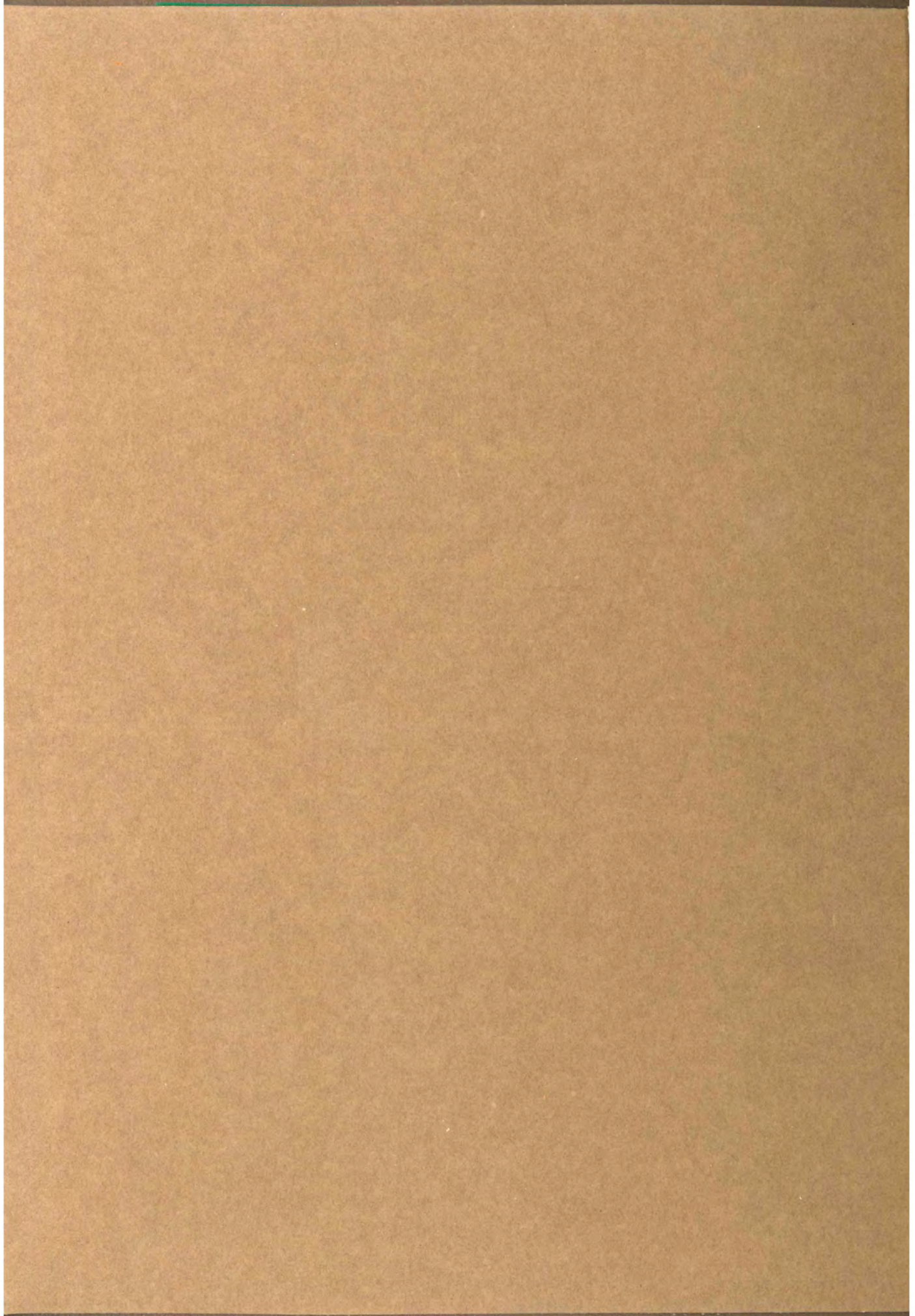




0 1997 0139270 6
Southern Baptist Seminary

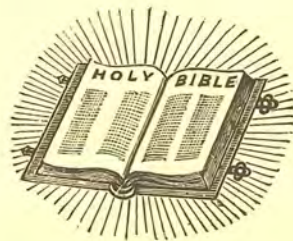






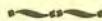
1922 Annual of the
Southern Baptist Theological Seminary

LOUISVILLE, KENTUCKY



Published by the Student Body

W. H. BARTON, Editor H. W. TRIBBLE, Manager



VOLUME ONE

CARVER SCHOOL LIBRARY



Order of Books



Seminary

Graduates

State Groups

Organizations

Athletics

Humor



Foreword

We present this, the first volume of the Annual, to the students, alumni, and friends of the Seminary, in the hope that it may help to keep alive through the coming years the cherished memories of those days spent in the halls of our Alma Mater. May its little contribution add something to the permanent history of the institution already enshrined in all our hearts. May this, our first venture into a new field of undertaking, in some measure light the way to the establishment of a permanent place for the Annual in the life of the Seminary. If this be the reward of our labors, your Staff shall indeed be gratified and shall not be ashamed of our modest initial effort.

144907

378.99205
5088a
1922



To the Memory of
JAMES PETTLGREW BOYCE, D.D., LL.D.,
The Founder and First President of the
Seminary,
Scholar, Seer, Beloved Teacher, and
Christian Nobleman,
We dedicate this the first volume
of the Annual.



James Pettigrew Boyce, D. D., LL. D.

Born, 1827—Died, 1888. President, 1859-1888.

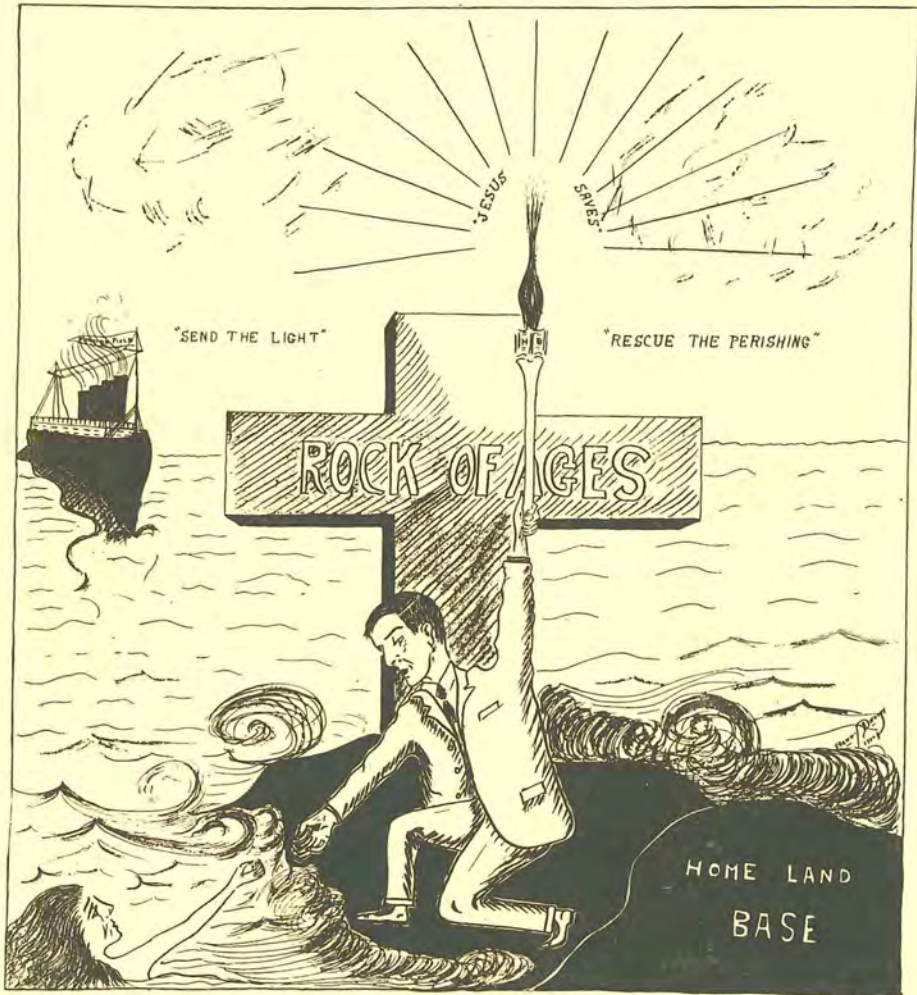
Doctor Boyce was one of nature's noblemen. He came of the best strain in the aristocracy of Charleston, and was of Huguenot stock. He was born to wealth and social position. He was a natural financier, and could have been a railroad president or head of a great bank or trust. As it was, he husbanded what he inherited from his father through the stormy times of civil war and reconstruction and panic when other men lost all.

But God had other places for this born leader of men. He was to be the founder and first President of the Southern Baptist Theological Seminary, which, under God, was to play a powerful part in unifying and moulding Southern Baptists, through times of stress and strain, for the great opportunities of the present day.

Not all men have insight and foresight to project great enterprises, and still fewer the courage to carry them through to success in spite of the shock of war, the ruin and blasting of a great civilization, bitter rivalries and denominational strife. But Doctor Boyce saw that a school of a new type was demanded to meet the needs of Southern Baptists. He boldly outlined his conception and pressed it with such force and energy that he won a following, and finally won John A. Broadus to a place by his side. Others joined hands with these two, Basil Manly and William Williams, but Boyce and Broadus made the inseparable combination of genius and devotion that compelled final success when it seemed impossible. The story is told with tragic pathos by Broadus in his "Memoir of James P. Boyce," and in his own letters in Robertson's "Life and Letters of John A. Broadus." Indifference, opposition, the poverty of a proud people only spurred them on. Dark days came, but when one was ready to quit, the other was like adamant. And so the great thing was accomplished at last. Once the end seemed near, and Boyce announced one day after the removal from Greenville to Louisville that the Seminary must close unless God raised up a man to give at once a large sum. And Joseph E. Brown of Georgia sent word for Boyce to come to Atlanta. He gave him fifty thousand dollars, and the school was saved.

To-day it is hard to realize how hard and how long the struggle was—to-day when this once struggling school of the prophets has four hundred and fifteen young ministers in actual attendance, an unparalleled situation anywhere. But Boyce believed that there would be five hundred some day, when he had only one hundred and fifty towards the end of his life. His prophecy will come true when the days of expansion come out by Cherokee Park.

Boyce won the confidence and love of Southern Baptists by his heroism and his prowess. They rejoiced to make him President of the Convention. He was the great constructive spirit of Southern Baptists in the preceding generation. He builded better than he knew. His work will stand the test of time.



The Seminary

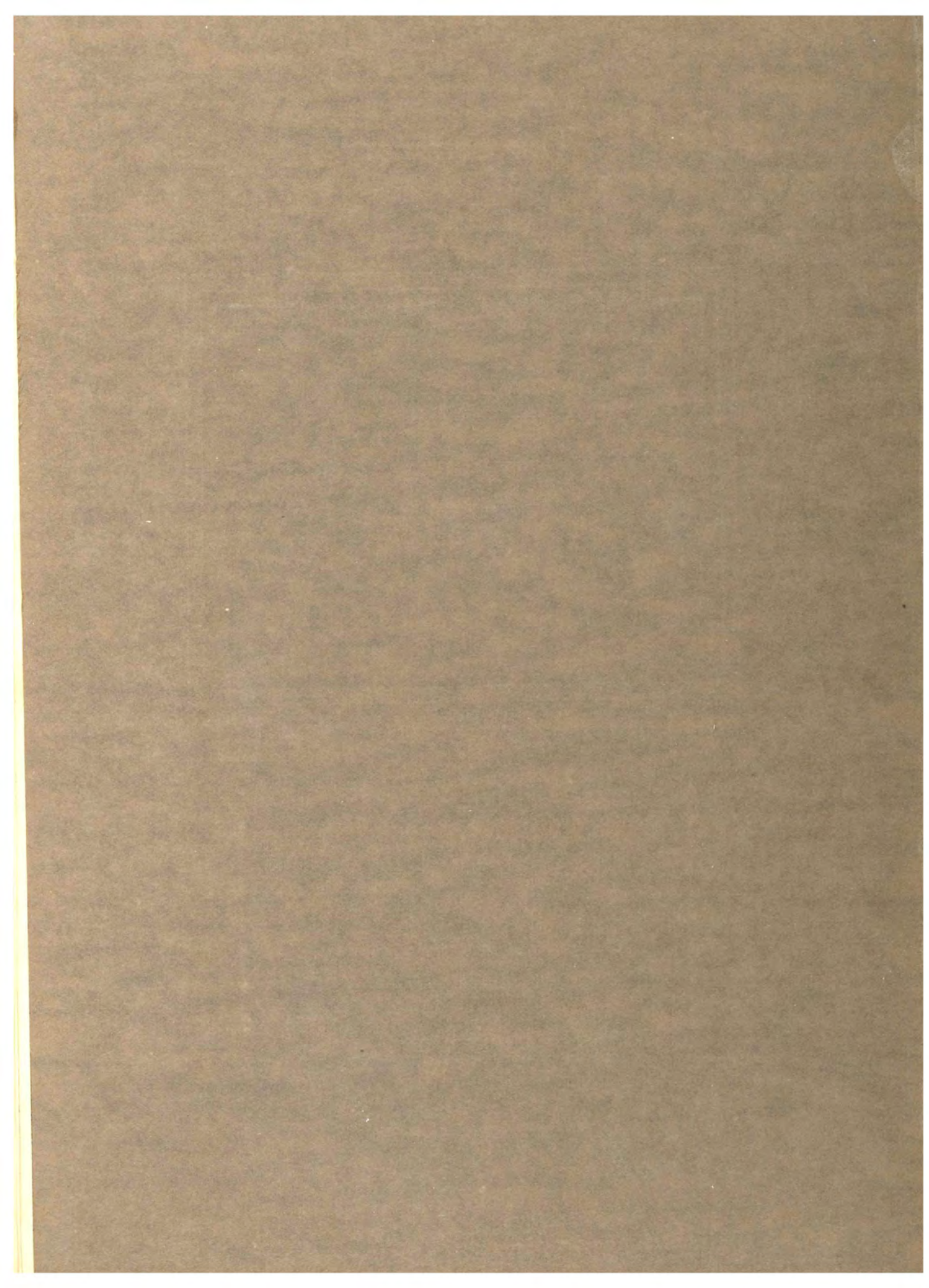


Bridge Number 5

Cherokee Park

Louisville, Ky.

Book One



19 O KHPTE 22



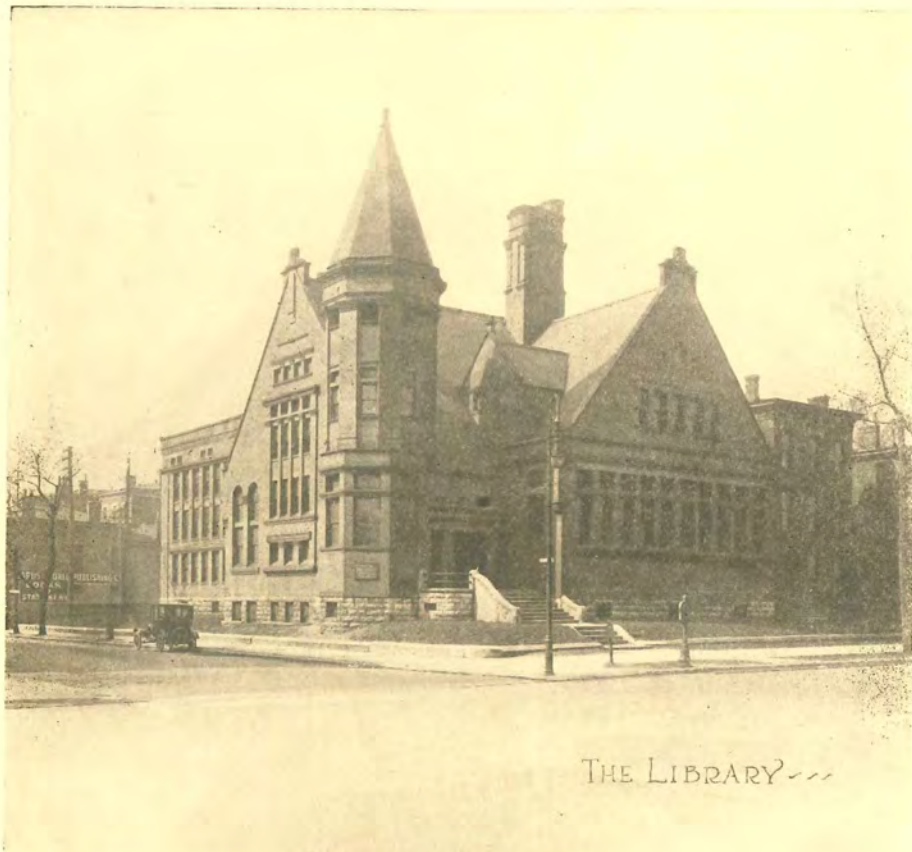
THE BEECHES



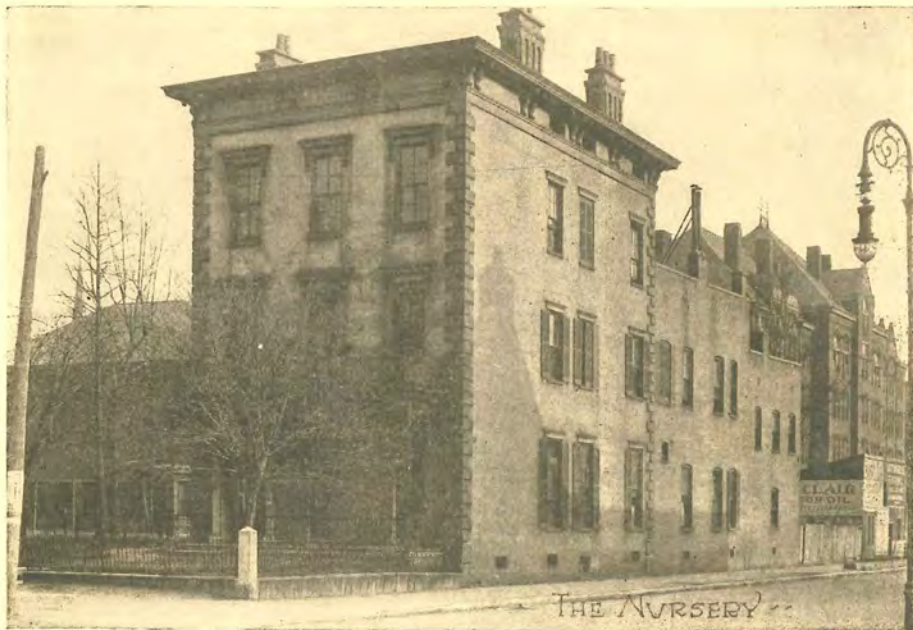
19 O KHPTE 22



NEW YORK HALL



THE LIBRARY---









John Andrew Broadus, D. D., LL. D.

President, 1889-1895.

Dr. Broadus entered upon his duties as President of the Seminary in 1889, with an intimate acquaintance with the history of the institution and its ideals. For thirty years he had taught in two of the most important departments of the school, and he was known to all the alumni as a ripe scholar and a brilliant instructor. No one could think of the Seminary without thinking of Dr. Broadus, who had prepared the course of instruction, modeling the institution after the plan of instruction with which he was familiar in the University of Virginia. Dr. Broadus had remained with the Seminary in the days of its poverty, when tempting offers came often from great churches which desired his services as pastor. He had given to the Seminary devoted service, and had secured some of the largest gifts for its new buildings and its endowment. When Dr. Boyce died in December, 1888, it was a foregone conclusion that Dr. Broadus would be chosen as the second President of the institution.

As long as Dr. Boyce was able to preside over the Seminary, Dr. Broadus was accustomed to underestimate his own ability as an administrator, deferring to Dr. Boyce's judgment in a beautiful spirit; but when the responsibility for the management of the Seminary was placed upon him, he soon convinced everyone of his great administrative ability. It was through his efforts that the money was secured for the Library and for Norton Hall; just as it was he who had raised in New York the money for the dormitory, while Dr. Boyce was busy in Louisville raising money to pay for the lots on which the present buildings of the institution rest. Dr. Broadus gave special attention to providing an adequate endowment for the institution, and was quite successful in adding substantial sums to the permanent funds of the Seminary.

The fame of Dr. Broadus as a preacher and a scholar drew to the Seminary an increasing number of students from all parts of our country and from foreign lands. During the last year of his life, the attendance rose to 267, and the student body was thoroughly cosmopolitan. Dr. Broadus presided with rare skill, whether in the class room or in the chapel on public occasions. His colleagues, the students, the trustees, and all the friends of the Seminary looked upon him with admiration and a growing veneration. He was one of the wisest men of his generation. In addition to his administrative duties, he taught more hours than almost any of his colleagues. He was a tireless worker, and kept up his studies to the close of his life. The Seminary grew by leaps and bounds under his leadership.



JOHN ANDREW BROADUS
Born, 1827—Died, 1895.



William Heth Whitsitt, D. D., LL. D.

Born, 1872, Died, 1911. President, 1895-1899.

Upon the death of Dr. Broadus, Dr. Whitsitt was chosen, at the regular meeting of the Trustees, in May, to succeed him. He was the choice of the great majority of students and alumni, and of a multitude of admiring friends in all the South. For ten years preceding he had administered the Students' Aid Funds, which had brought him into intimate and sympathetic relations with hundreds of young ministers and with great numbers of contributors to these funds. He had a genius for friendship. He seemed never to forget any one whom he had ever met. His personal interest was apparently limitless. It is no wonder that he had come to be known to thousands of people by the title of affection, "Uncle Billy," in which he evidently took great pleasure in his quiet way, although one never heard him mention it.

It was this personal power that accounts for the most remarkable feature of his successful term in the Presidency, the great growth in attendance. He was pre-eminently the scholar, and thinker; a rare lover of literature and art, in which subjects his lectures upon occasions were most delightful and helpful; a preacher of notable gifts of insight and quaint originality, always reading his perfectly prepared sermons;



a lecturer of the highest inspiration to such students as were prepared for this method of teaching; a Christian of the most genuine and simple piety, whose prayers were doors into the Holy Presence; a friend most sympathetic and unselfish.

A combination of circumstances and conditions, which need not now be recounted, brought on a conflict of which he was the storm center. It reached a climax in his resignation being announced in the summer of 1898, and culminated in its acceptance in May, 1899. Many factors entered into this famous "Whitsitt Controversy." He was only one of its victims, and was too closely involved in it ever to appraise it accurately. He served for many years as Professor of Philosophy in Richmond College, and then retired to private life in Richmond, until his departure in 1911. Although he had numerous expressions of love and confidence all the years, from many sources, his sensitive soul could never overcome the feeling that his brethren had cast him out, and he carried to his grave a heart bruised, if not crushed.

But he had served his denomination in a measure that he never knew. Born and reared three miles from Nashville, Tenn., he was left by the death of his father when he was eleven, to be trained by his mother until in his youth he was sent to an academy at Mt. Juliet. He then finished with honor the course at Union University, Murfreesboro, Tenn., when he was just twenty, but went off to the Civil war, then opening, without his diploma. After two years in the ranks, where he rose to a lieutenancy, he was made chaplain for the remaining years of the war, and was much of the time with the famous General N. B. Forest.

The war over, he became pastor of his home church, Mill Creek, for a year, in which notable progress was made. His family had been a leading one there for a long while, and he used to glory that he "had been a Baptist three hundred years." The family's Baptist worth is memorialized in "Whitsitt Chapel," a few miles from old Mill Creek.

But the young minister was born for scholarship, and his eager heart led him to seek further education. He went to the University of Virginia. There, at the close of a year of study of the classics, he met Dr. John A. Broadus, whose invitation he accepted to become a student in the Seminary at Greenville. Then after two years of "good, stout courses," he went for two years in the universities of Leipsic and Berlin.

Home again, he became pastor at Albany, Ga., but had been in that charge but a few months when the Seminary called on him to come to its Faculty, in 1872, where, for twenty-nine years, he graced and honored the position, and grew in might.

He was jealous that Southern Baptists should be more largely represented in "the republic of letters"; he accepted and introduced the methods of induction and scientific historical study among his people. He had the clearest and most reasoned convictions of the Christian and Biblical quality of the Baptist position, and so felt free to encourage the widening of Christian sympathy for all the people of God. He had a fondness for quaint and antique forms of expression, growing out of his extensive reading of ancient historical documents, and this habit was sometimes responsible for his being misunderstood in some of his expressions. His was one of the most guileless of souls. Utterly simple and sincere in all he said and did, he could never understand when he was misinterpreted, and could never make use of forensic and dialectical devices in controversy. This rendered him helpless in the arena of open controversy and heated debate. Not only could he not participate in it; he simply could not comprehend it. Had he been of a different temperament he would have been better understood in his day, and would not have suffered as he did in the last decade of his life. A rare soul, he did a rare service to his denomination.



Dr. Mullins' Administration

Dr. Mullins came to the Presidency of the Seminary in 1899, under peculiar conditions. The closing years of the preceding administration had been full of excitement. The President had been under fire, and his friends had worked with unwonted zeal to build up the attendance. When the commotion subsided, the inevitable reaction followed, and Dr. Mullins had to face a situation full of delicate problems and a falling off in the attendance. This decline continued for two years, and then the numbers began to grow again gradually. With some variations this growth has continued until the enrollment the present year has reached a point about one hundred beyond the high water mark of the preceding administration, and is far the largest in the history of the institution—four hundred and fifteen men.

The growth of the endowment has been even more marked. When Dr. Mullins came to the helm, the Endowment Fund was somewhat above \$400,000.00. At the present it is approximately \$1,500,000.00. Nothing but a large increase in the endowment would make possible the continued operation of the Seminary on the present enlarged scale of its work, and under the abnormal prices now prevailing. Although greatly increased, the endowment is even now hardly equal to the needs of the situation. But the increase in endowment is not all the money that has been raised under Dr. Mullins' administration. The draft upon the Students' Fund has been much heavier in recent years, and this increasing demand has been met. In addition, money had to be found for the purchase of a new site for the institution.

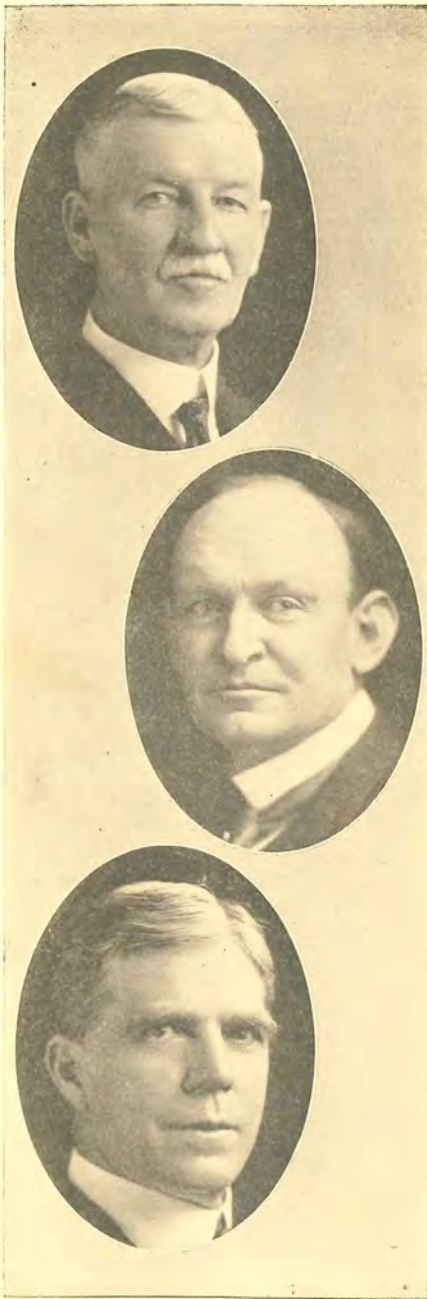
Reference to the new site reminds us that the removal of the Seminary to the new location definitely marks a new era in its history. The old buildings and the limited ground around them have become more and more inadequate for the growing life of the institution. But removal brings with it many problems, financial and otherwise; and these problems have for some time engaged much of the attention of the present President, and will of necessity make a heavy draft upon his energies for some time to come.

Another outstanding feature of Dr. Mullins' administration has been the remarkable expansion and development of the Seminary courses. The year in which he took charge, the course in Religion and Missions was instituted, preparation for which had been made the previous year. Afterward an innovation of first rate importance was made in the establishment of the course in Sunday School Pedagogy. A few years later the course in Christian Sociology was started; and another notable change, which is of quite recent date, was the merging of the old Pastoral Theology and the Ecclesiology courses into the course in Church Efficiency. In the meantime all the older courses have been expanded. In all these forward movements our Seminary has been in the front rank of American Seminaries.

Dr. Mullins' administration has been eventful, though not marked by upheavals; aggressive and forward-looking, but conservative and sane; and he has proved himself an eminently worthy successor of the great men who preceded him in the Presidency.



PRESIDENT EDGAR YOUNG MULLINS, D.D., LL.D.



JOHN RICHARD SAMPEY, D.D., LL.D.
Professor of Interpretation of the
Old Testament

ARCHIBALD THOMAS ROBERTSON, D.D.,
LL.D., Litt.D.
Professor of Interpretation of the
New Testament

WILLIAM OWEN CARVER, Th.D., D.D.,
LL.D.
Professor of Comparative Religion
and Missions, and Associate
Professor in New Testa-
ment Interpretation



CHARLES SPURGEON GARDNER,
D.D., LL.D.

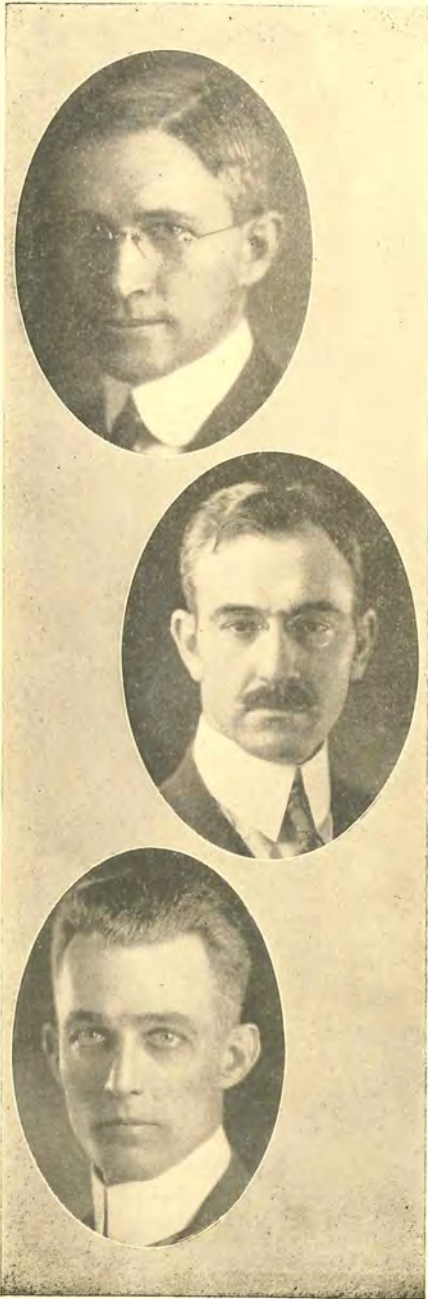
Professor of Homiletics and
Christian Sociology

HARRY CLIFFORD WAYMAN,
Th.D., D.D.

Professor of Biblical Introduction
and Assistant Professor of In-
terpretation of the Old
Testament

FRANK MARION POWELL, A.M., Th.D.

David T. Porter Professor of Church
History



GAINES STANLEY DOBBINS,
Th.D., D.D
Professor of Church Efficiency and
Sunday School Pedagogy

WILLIAM HERSEY DAVIS, M.A., Th.D.
Assistant Professor of New Testa-
ment Interpretation

JAMES MCKEE ADAMS, M.A., Th.M.
Assistant Professor of Theology



GEORGE BOARDMAN EAGER,
D.D., LL.D.
Professor Emeritus

ROBERT INMAN JOHNSON, B.A., Th.M.
Instructor in Elocution and Music

PHILIP THOMAS HALE, D.D., LL.D.
Field Agent, and Lecturer on
Evangelism



BOARD OF TRUSTEES

Hon. Joshua Levering	President
Rev. W. W. Landrum, M.D.	First Vice-President
E. L. Connally, D.D.	Second Vice-President
Rev. M. D. Jeffries, D.D.	Secretary
B. Pressley Smith, Esq.	Treasurer

FOR MARYLAND AND DISTRICT OF COLUMBIA.

Richard H. Edmonds, Esq.
 Hon. Joshua Levering.
 Rev. W. H. Baylor, D.D.
 Rev. C. H. Pinchbeck, D.D.
 Rev. John E. Briggs, D.D.
 Rev. H. A. Griesemer, D.D.
 Rev. H. P. McCormick, D.D.
 Rev. G. G. Johnson, D.D.
 Chas. M. Ness, Esq.
 Rev. J. H. Strong, D.D.

FOR VIRGINIA.

Rev. R. B. Garrett, D.D.
 Rev. Cecil V. Cook, D.D.
 Rev. Geo. Braxton Taylor, D.D.
 Rev. R. A. Williams, D.D.
 J. L. Camp, Esq.
 Rev. C. B. Arendall.
 Rev. J. E. Hicks, D.D.
 Rev. Geo. W. McDaniel, D.D.
 W. M. Rucker, Esq.
 Carter Williams, Esq.

FOR GEORGIA.

E. L. Connally, M.D.
 Rev. M. Ashby Jones, D.D.
 Rev. T. M. Callaway, D.D.
 Hon. Clifford Walker.
 Hon. L. G. Hardman.
 Rev. John D. Mell, D.D.
 Rev. H. A. Porter, D.D.
 Rev. C. W. Daniel, D.D.
 J. P. Nichols, Esq.
 R. F. Willingham, Esq.
 Rev. S. B. Cousins.

FOR NORTH CAROLINA.

Pres. R. T. Vann, D.D.
 Rev. Livingston Johnson, D.D.
 Rev. W. L. Poteat, LL.D.
 Rev. J. B. Weatherspoon, D.D.
 Rev. J. J. Hurt, D.D.
 Rev. C. H. Durham, D.D.
 Gilbert T. Stephenson, Esq.
 Rev. W. F. Powell, D.D.
 Rev. C. H. Anderson.

FOR ALABAMA.

Rev. C. A. Stakely, D.D.
 Rev. Paul V. Bomar, D.D.
 Pres. J. M. Shelburne, D.D.
 Rev. L. O. Dawson, D.D.
 Rev. J. A. Davison, Th.D.
 Rev. W. B. Crumpton, D.D.
 Rev. J. E. Dillard, D.D.
 Rev. L. M. Latimer, D.D.
 Wm. H. Manly, Esq.
 J. Carter Wright, Esq.

FOR TEXAS.

Pres. S. P. Brooks, LL.D.
 Rev. R. T. Hanks, D.D.
 Rev. J. L. Gross, D.D.
 Rev. M. T. Andrews.
 Prof. E. G. Townsend.
 Rev. W. W. Melton.
 Rev. Wallace Bassett, D.D.
 Rev. W. B. Kendall.

FOR KENTUCKY.

Junius Caldwell, Esq.
 Franklin Miller, Esq.
 T. J. Humphreys, Esq.
 F. H. Goodridge, Esq.
 Rev. W. W. Landrum, D.D.
 G. W. Norton, Esq.
 A. Y. Ford, Esq.
 Hon. B. F. Procter.
 Geo. E. Hays, Esq.
 Rev. L. W. Doolan, D.D.

FOR SOUTH CAROLINA.

J. J. Lawton, Esq.
 Rev. Z. T. Cody, D.D.
 Rev. Rufus Ford, D.D.
 Rev. C. E. Burts, D.D.
 C. B. Bobo, Esq.
 H. P. McGee, Esq.
 T. T. Hyde, Esq.
 C. O. Hobbs, Esq.
 H. L. Bomar, Esq.
 Rev. E. S. Reaves, D.D.
 I. H. Hunt, Esq.

FOR MISSOURI.

Rev. S. E. Ewing, D.D.
 Rev. W. H. Geistweil, D.D.
 Hugh Stephens, Esq.
 Rev. Geo. L. Hale.

FOR MISSISSIPPI.

Rev. A. V. Rowe, D.D.
 Rev. A. T. Cinnamon.
 W. M. Whittington, Esq.
 Rev. T. L. Holcomb.
 Rev. P. I. Lipsey, D.D.
 Rev. W. A. Borum, D.D.

FOR TENNESSEE.

Rev. I. N. Penick, D.D.
 G. C. Savage, M.D.
 Hon. O. C. Barton.
 Rev. J. Pike Powers, D.D.
 Rev. M. D. Jeffries, D.D.
 Rev. Allen Fort, D.D.
 Rev. A. U. Boone, D.D.
 F. N. Smith, Esq.
 Rev. I. J. Van Ness, D.D.
 Rev. B. C. Hening, D.D.
 Pres. O. E. Sams.

FOR FLORIDA.

Rev. W. A. Hobson, D.D.
 Rev. C. W. Duke, D.D.
 Frank Bentley, Esq.

FOR LOUISIANA.

Rev. M. E. Dodd, D.D.
 W. H. Managan, Esq.
 Rev. S. A. Smith, D.D.

FOR ARKANSAS.

Rev. H. L. Winburn, D.D.
 Rev. B. V. Ferguson, D.D.

FOR OKLAHOMA.

Rev. Forrest Maddox.
 Rev. S. J. Porter, D.D.



The Post Graduates

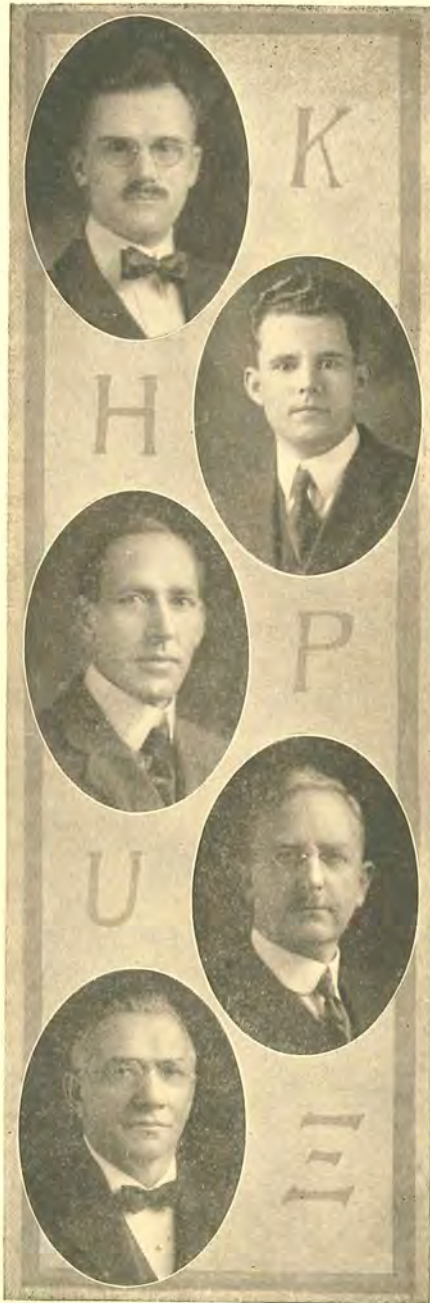
"To strive, to seek, to find,—
And not to yield."

The course leading to the degree of Doctor in Theology offers to full graduates a fitting climax for professional preparation. To stout hearts it has all the lure of an unexplored country, and he who follows its attainment must have the qualities of the pathfinder. The requirements for the Graduate Course are necessarily high: the degree of A.M. or A.B. from a college or university of recognized standing, or work equivalent to that required for such a degree; the degree of Master in Theology of this institution, or a corresponding degree from some other theological seminary of recognized standing; a period of at least thirty-two weeks of resident study in this institution during candidacy for this degree; the completion of one major and two minor studies; an oral examination before a committee of the Faculty and others whom they may invite; and the submission to the Faculty of a thesis of not fewer than twelve thousand words. While the work demanded is of an exacting nature, looking forward to painstaking research and originality of thought, the fruit of one's toil in the attainment of the goal is a sufficient incentive.

During the past few years, the graduate work offered by the Seminary has been accepted by an ever-increasing number of candidates—full graduates from this institution and other schools of recognized standing, both in the United States and abroad. In the graduate department for the present scholastic year, there are fifty approved applications, representing sixteen colleges, eleven universities, and five seminaries. The group is cosmopolitan. In a real sense, the ends of the earth have come together in Louisville. Every alumnus of the Southern Baptist Theological Seminary rejoices not only in the attractiveness of his Alma Mater's courses, but in her ability to satisfy the ambitions of aspiring men who reach out for things par excellence. The light that she possesses is passed on to other hands, and through the open door of her advanced studies a continuing line of exceptionally equipped men goes out to the uttermost parts of the world with their contributions to the ongoing of the Kingdom.

To the representatives of the Post Graduate Course who are completing all requirements and receiving the degree of Doctor in Theology at this time, we offer hearty congratulations. Honor to whom honor is due; praise to whom praise. To deserve success is splendid; to win it is better. You have done both. We shall follow your future labors with expectancy, interest, and prayer. May He give to you the full realization of fondest hopes and grant that in the lowliness of service you shall become great. Your Alma Mater says no farewells; in company with her loyal sons, who share her passion for the world's salvation, she travels far and wide; in your labors she will not be an observer, but a partaker. Thus she sends you forth but never leaves you. The ripened harvest of consecrated endeavors awaits you, and may the song of the reapers be forever on your lips and in your hearts.

Faith said, "'Tis brighter farther on;"
Hope said, "I see the coming of the dawn;"
Love said—the greatest of the three—
"The morn is here! 'Tis found in me!"



OWEN OSBURN DIETZ

"The heart of the prudent getteth knowledge."

Born at Rupert, Va.; Married Miss Kathleen Parish of Richmond, Va., 1916; A.B., University of Richmond; M.A. Univ. of Penn.; B.D., Crozer Theo. Sem.; Pastorate ten years. Future work: Pastorate.

ESPER VALENTINE HUDSON

"For other aims his heart had learned to prize,
More skilled to raise the wretched, than to rise."

Born at Shelby N. C., Jan. 28, 1892; A.B., Wake Forest College; Th.M., S. B. T. S., 1920; Pastorate six years. Future work: Christian Education.

HERBERT MOULE

"Give instruction to a wise man, and he will be yet wiser."

Born May 30, 1885, at London, Ontario, Canada; Married Miss Lena Anne Fraser; B.H., Springfield Y. M. C. A. College; A.M., Oskaloosa College; B.D., Congregational College, Montreal, Quebec, Canada; Annual Staff, 1922; Pastorate eleven years. Future work: Christian Education.

AUGUSTUS YOUNG NAPIER

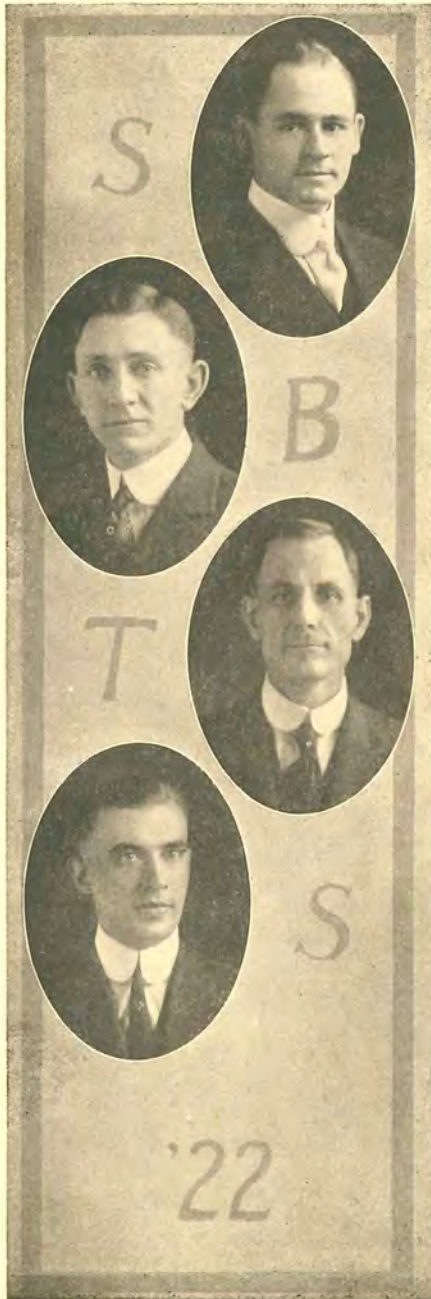
"He loveth the souls of his fellows."

Born Lafayette, Ga., March 2, 1872; Married Miss Lois Davis, April 8, 1896; A.B., Mercer University; Th.M., S. B. T. S.; Pastorate eight years; Missionary to China since 1905. Future work: Pastorate.

ERIC JOHN NORLANDER

"He weareth the crown of knowledge with meekness."

Born Dec. 24, 1864, Stijo, Angermanland, Sweden; Married Miss Britha Catharina Westin, Dec. 31, 1885; Attended Sioux Falls College, S. D.; B.A., University of Pittsburg; Attended Swedish Bapt. Theol. Seminary; Divinity School Univ. of Chicago; B.D., Western Theol. Sem., Pittsburg, Pa.; Post-graduate work; Pastorate 28 years. Future work: Evangelist and Christian Education.



WILLIAM A. SLOAN

"He deems it wise to be kindly, and kindly to be wise."

Born March 20, 1892, in Scott County, Arkansas; A.B., Colgate University; Th.M. Southwestern Theological Seminary. Future work: Evangelist.

ELLIOTT RUFUS STEWART

"Thus to relieve the wretched was his pride
And even his failings lean'd to virtue's side."

Born at Catawba, N.C., Dec. 31, 1893; A.B., from Catawba College; A.B., Wake Forest College; Th.M., S. B. T. S.; Married Miss Leafy May Brown, Sept. 14, 1921; Leader of Street and Factory Preaching, 1919, '20, '21; Manager of Soccer Football Team, 1920; Pastorate five years. Future work: Christian Education and Evangelist.

STEPHEN LAWTON WATSON

"A teacher and leader of men."

Born at Sellers, S. C., Aug. 2, 1880; Married Miss Annie Miller, June 18, 1914; A.B., University of Greenville; Th.M., S. B. T. S.; Professor in Rio Baptist College and Seminary in Brazil. Future work: Director of Baptist Publishing House, Rio de Janeiro, Brazil.

KYLE M. YATES

"The world is full of sunshine."

Born at Apex, N. C., Feb. 7, 1895; A.B., and A.M., Wake Forest College; Th.M., S. B. T. S.; Fellow Old Testament Interpretation; Five years in pastorate. Future work: Pastorate and Christian Education.



Graduate Students in Residence

Coakley, William Samuel	-	Mt. Washington, Kentucky
	Major: Theology	
Croxton, Thomas Wade	-	Honaker, Virginia
	Major: Church History	
Davison, Charles Clement	-	Decatur, Alabama
	Thesis	
Falls, Monroe Oates	-	Pottsville, Arkansas
	Major: Theology	
Freeman, John D.	-	Springfield, Kentucky
	Major: Sociology	
Fuller, Ellis Adams	-	Mountville, South Carolina
	Major: New Testament	
Gibson, Thomas Baron	-	Lineville, Alabama
	Major: New Testament	
Hester, Hubert Inman	-	Whiteville, North Carolina
	Major: Old Testament	
Jones, Broadus England	-	Macon, Georgia
	Major: Theology	
Lacy, Edgar St. Clair	-	Versailles, Kentucky
	Major: Sociology	
Leavell, Leonard O.	-	Oxford, Mississippi
	Major: New Testament	
Leazer, Robert Williamson	-	El Paso, Texas
	Major: Sociology	
Lloyd, D. Bunn	-	Jacksonville, Texas
	Major: Theology	
Masden, Marvin H.	-	Lebanon Junction, Kentucky
	Only Matriculated	
Olander, Carl Joseph	-	Jackson, Mississippi
	Major: New Testament	
Pearson, Frederick Bunyan	-	Moulton, Alabama
	Major: New Testament	
Reid, Avery Hamilton	-	Estill Fork, Alabama
	Major: Theology	
Ricks, Charles Thomas	-	Dublin, Georgia
	Major: Old Testament	
Riddell, Robert Logan	-	Midway, Kentucky
	Major: Sociology	
Smith, Andrew Martin	-	Louisville, Kentucky
	Major: Church History	
Snyman, Lionel Purden	-	Molteno, South Africa
	Major: History and Philosophy of Religion	
Stevens, Charles Hadley	-	Wilson's Mills, North Carolina
	Major: Church History	
Terrell, George Tyler	-	Ashland, Virginia
	Major: Church History	
Welch, Charles Whitefield	-	Louisville, Kentucky
	Major: Sociology	
White, Ransom Kelly	-	Conway, North Carolina
	Major: Theology	
Willett, Dwight Haynes	-	Owensboro, Kentucky
	Major: Theology	
Williams, Jerome Oscar	-	Clanton, Alabama
	Major: Sociology	

Graduates



Cherokee Falls

Cherokee Park Louisville, Ky.

Book Two





Officers of the Th. M. Class

J. WASH WATTS	<i>President</i>
PAUL WHEELER	<i>Vice-President</i>
T. BERTRAM STOVER	<i>Treasurer</i>
COLLIS CUNNINGHAM	<i>Secretary</i>
FRANK T. WALKER.....	<i>Annual Representative</i>

Th. M. Letter to the Annual

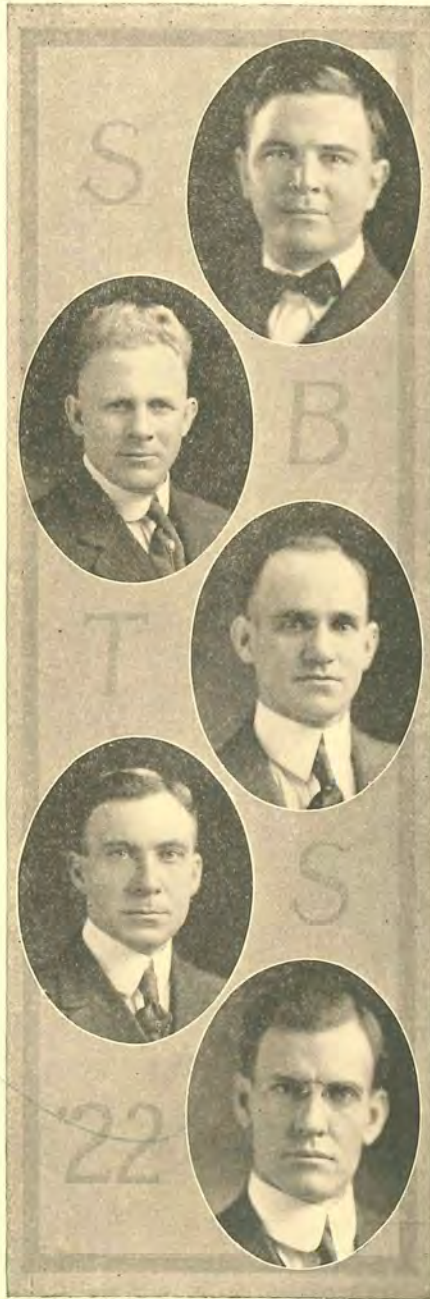
Preparation has ever been requisite for a successful ministry; and in this present age of specialization this is increasingly true. It is imperative that the preacher shall be expert in his field of activity. With this conviction we have pursued our studies in the Seminary. It is gratifying to note the increasing number of men enrolling each year for the degree of Master in Theology: the Th.M. class of this year is the largest in the history of the institution.

In our contact with this unexcelled Faculty we realize that we have sat at the feet of some of the world's greatest theologians and Bible teachers. We count it a rare privilege to be numbered among their students. It is hoped that we have, in some degree, imbibed the spirit of these great men; and that we may be enabled to perpetuate the high ideals that have always characterized their lives and teaching.

While we realize the importance and appreciate the value of intellectual equipment in the minister's preparation, we do not underestimate the need of heart-culture. Fortunate indeed are we who have had the privilege of attending this school. Located as it is here in the heart of a great city, there is abundant opportunity for soul-culture through the unusual spiritual advantages, and the equally great opportunities for practical service.

As we near the completion of our Seminary course, there steal over us feelings of joy mingled with regret. There is joy because many hopes of former days have become realities. But a retrospective glance at the pleasant experiences of the past three years together, arouses within us a sense of regret that such fellowship cannot be continued indefinitely.

And thus as we look backward through the vistas of history, made hoary by the multiplied decades of past centuries, we think of all those who, from the days of Abraham to the present, have been ministers of God's message to men. It is with reluctance and humility that we dare count ourselves fellow-laborers with such an illustrious throng. And yet we deem it a privilege that God, in His omniscient purpose, has given us a small part in the accomplishment of His world-program. May we carry ever in our hearts the words of the Master, "Ye did not choose me, but I chose you, and appointed you, that ye should go and bear fruit, and that your fruit should abide: that whatsoever ye shall ask of the Father in my name, He may give it you."



FRANK COCHRAN
Dublin, Ga.

‘There are more men ennobled by study than by nature.’

Born Oct. 22, 1895, Dublin, Ga.; Married Miss Dorothy Perry, June, 1921; A.B., Mercer University; Student Moody Bible Institute; Group Leader Student Organization; Pastorate seven years. Future work: Pastorate.

FREDERICK OSBURN CRIMINGER
Excelsior Springs, Mo.

“The great end of a good education is to form a reasonable man.”

Born, 1884, Heath Springs, S. C.; A.B., William Jewell College, 1914; Chaplain 1st Lieut., A. E. F., World War; Pastor, Evangelist and Singer, eleven years. Future work: Pastorate.

COLLIS CUNNINGHAM
Birmingham, Ala.

“Not for himself, but for the world he lives.”

Born Aug. 31, 1890, Forsythe, Ga.; A.B., Howard College; Chairman, New York Hall; Sec. Th.M. Class; Chorister Ala.-Fla. Group; Pastorate seven years. Future work: Japan.

LEWIS WILLIAM DOCKERY
Tuscaloosa, Ala.

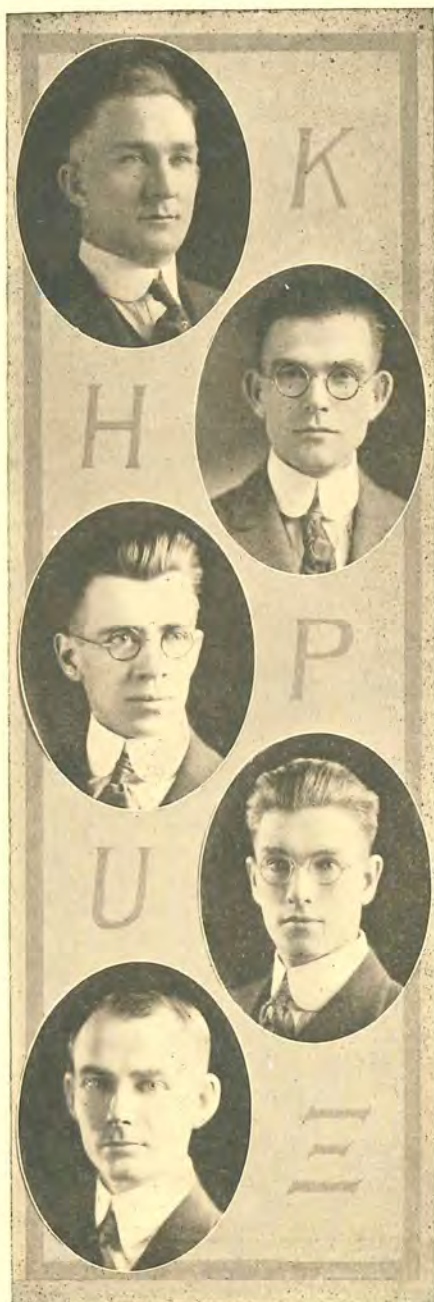
“All I have seen teaches me to trust the Creator for all I have not seen.”

Born Sept. 2, 1888, Tuscaloosa, Ala.; Student Univ. Ala., 1907-8; Howard College, 1914-18; A.B., M.A., Univ. Louisville; Chaplain 1st Lieut., A. E. F.; Pastorate ten years. Future work: Pastorate.

BENJAMIN HARRISON DUNCAN
Sullivan, Ky.

“All our dignity lies in our thoughts.”

Born Nov. 13, 1889, Crittenden Co., Ky.; Married Miss Helen Brown, Jan. 30, 1920; Student Bethel College; Pastorate twelve years. Future work: Pastorate.



WILLIAM WALTER ADAMS

Chelsea, Ala.

"He had a head to contrive, a tongue to persuade, and a hand to execute."

Born Sept. 16, 1892, Chelsea, Ala.; A.B., Howard College; Pres. Student Organization, 1921-'22; hand ball and tennis tournaments; Pastorate seven years. Future work: Pastorate.

TITUS WALKER BEASLEY

Hollywood, Va.

"The truly great are always modest."

Born June 2, 1890, Hollywood, Va.; B.S., Richmond College, 1918; Pres. Williams' Group; Capt. U. S. A., World War; Future work: Christian Education.

LONNIE ELWOOD BLACKMAN

Princeton, N. C.

"O let us still the secret joy partake,
To follow virtue even for virtue's sake."

Born June 10, 1892, near Goldsboro, N. C.; Married Miss Gladys Yates, Aug. 29, 1920; A.B., Wake Forest College, 1916; Pastorate two years; Field Work three years. Future work: Foreign Mission Field.

CHESTER WILDER BRANCH

Plant City, Fla.

"If music be the food of love, play on;
Give me excess of it."

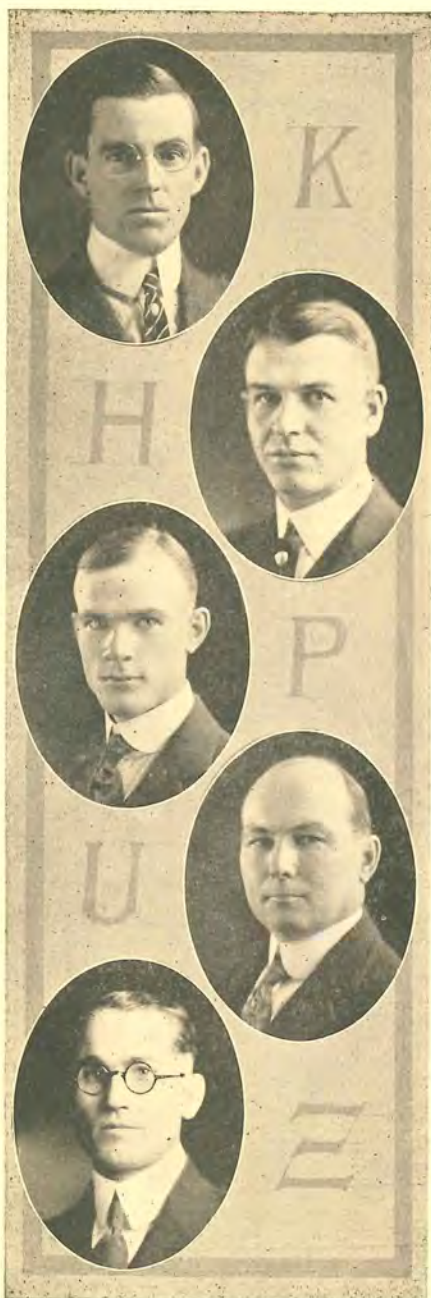
Born March 21, 1894, Plant City, Fla.; A.B., Columbia College; Treas. Fla.-Ala. Group; Reporter, Vice-Pres. Fla.-Ala. Group; Annual Staff, 1922; S. S. and B. Y. P. U. Field work; Future work: Brazil.

ROBERT EURE BRICKHOUSE

Creswell, N. C.

"He resembles the gods in nothing so much as in doing good to his fellowmen."

Born Aug. 2, 1883, Creswell, N. C.; Married Miss Nina Hollomon, Sept. 23, 1913; A.B., Wake Forest College; Th.G., S. B. T. S.; Vice-Pres. N. C. Group; Pastorate seven years; Future work: Pastorate



GENERAL EDGAR DUPREE

Cave Springs, Ga.

“On their own merits modest men are dumb.”

Born March 5, 1891, Acworth, Ga.; Married Miss Mamie Routt, 1919; Student Johnson Bible College; A.B., A.M., Univ. Louisville; Chapel pianist; Pastorate three years. Future work: Pastorate.

OWEN FENNEL HERRING

Clinton, N. C.

“Persistent in duty, loyal to right,
Faithful and kind of heart—
Characteristics rarely found in man
Which from his life impart.”

Born July 23, 1892, Delway, N. C.; B.A., M.A., Wake Forest College; Executive Committee Student Council; Pres. N. C. Group; Basket Ball Team. Future work: Pastorate.

SAMSON FEDISON HUDSON

Dunn, N. C.

“Of soul sincere, in action faithful, in honour clear, earth holds no other like thee.”

Born Feb. 1, 1893, Dunn, N. C.; Married Miss Mary Sue Woody, Sept. 10, 1921; Student Union Univ. three years; A.B., Wake Forest College, 1919; Reporter and Pres. N. C. Group; Pastorate five years; Field work two summers. Future work: Pastorate.

BRADLEY THOMAS KIMBROUGH

Louisville, Ky.

“O this learning, what a thing it is!”

Born Oct. 30, 1880, Ashland, Miss.; Married Miss Edith Jewell Lonnon, June 17, 1913; B.A., Univ. of Miss.; Student in Halle, Berlin, three years; Medical student Univ. Louisville, two years. Future work: Educational.

ERNEST VICTOR MAY

Nola, Miss.

“The surest way not to fail is to determine to succeed.”

Born Jan. 30, 1890, Nola, Miss.; Married Miss Tonnie Highfill, Aug. 26, 1919; A.B., Georgetown College, 1918; Leader Volunteer Band; China Miss. Comm.; Chaplain 1st. Lieut., U. S. A., World War; Pastorate five years. Future work: Pastorate.



JAMES WILLIAM MCGAVOCK
Eddyville, Ky.

"Thou livest with less ambitious aim,
Yet hast not gone without thy fame."

Born Oct. 30, 1889, Newberg, Ark.; Married Miss Katharine E. Johnson, June 1, 1917; A.B., Union University; Pastorate nine years. Future work: Educational, Foreign Mission Board.

HILARY HERBERT MCGINTY
Riverview, Ala.

"Patience and gentleness is power."

Born March 31, 1895, Riverview, Ala.; Married Miss Minnie Lou Finney, Aug. 16, 1921; A.B., Howard College; Pastorate eight years. Future work: Pastorate.

OSCAR LEE MINKS
Lebanon, Ky.

"Learning is better worth than house or land."

Born July 19, 1891, Fariston, Ky.; Married Miss Myrtle Morgan, Oct. 10, 1912; Student Cumberland College, Ky.; A.B., A.M., Ph.D., Oskaloosa Univ., Iowa; Pastorate two years. Future work: Educational.

HENRY OWEN MORRIS
Olar, S. C.

"In a great soul everything is great."

Born Nov. 29, 1890, Olar, S. C.; Married Miss Alma Black, May 29, 1921; A.B., Furman University; 2nd Lieut. U. S. Army, World War. Future work: Pastorate.

TSUNEHIRO NAKAGAWA
Yamanashi, Japan.

"A modest man never talks of himself."

Born Sept. 11, 1891, Yamanashi, Japan. Graduate Kwansai University, Japan; Pastorate two years. Future work: Pastorate.



SANDY CLAY OWEN

Petersburg, Va.

"A friend may well be reckoned the masterpiece of nature."

Born Aug. 4, 1891, Petersburg, Va.; Married Miss Lessie Beatrice Blick, 1916; Student Richmond College four years; Th.B., S. B. T. S.; Student Council; Pastorate ten years. Future work: Pastorate.

EARL PARKER

Lineville, Ala.

"A superior man is modest in his speech, but exceeds in his actions."

Born July 1, 1888, Lineville, Ala.; A.B., A.M., Howard College; Sec. Missionary Comm. and Pres. volunteer Band; Pastorate eight years. Future work: Evangelistic, Foreign Field.

ROBERT BENTON PATTERSON

New Orleans, La.

"Master, go on and I will follow thee
To the last gasp, with truth and loyalty."

Born Apr. 10, 1894, New Orleans, La.; Married Miss Ernestine Loruther, June 30, 1920; B.S., Miss College; Student Council; Gym Director; Pastorate four years. Future work: Pastorate.

JOHN FRANK PRICE

Olmstead, Ky.

"A good resolve will make any port."

Born Nov. 16, 1888, Olmstead, Ky.; Married Miss Nannie Lou Herndon, Oct. 6, 1916; A.B., Bethel College; Officers' Training Corps, U. S. Army, World War; Pastorate ten years; Future work: Pastorate.

J. CEPH PITT

Springfield, Tenn.

"That which ordinary men are fit for, I
am qualified in; and the best of me is
diligence."

Born July 3, 1890, Springfield, Tenn.; Married Miss Callie B. Christian, 1917; A.B., Bethel College, 1919; Officers' Training School, U. S. A., World War. Future work: Pastorate.



WILLIAM CARLOS RAINES
Nashville, Tenn.

"He never courted men in station
Nor persons held in admiration."

Born Dec. 29, 1893; Married Miss Nannie B. Carver, 1913; Student at Adelpia College, Seattle, Washington; Willamette University, Salem, Oregon; A.B., Wake Forest College, 1919; Chm. Corr. Comm. Soc. Miss. Inquiry; Basket Ball Team; Basket Ball Manager; Plattsburg Officers' Training, U. S. Army, World War. Future work: Evangelistic.

RICHARD KERR REDWINE
Winston-Salem, N. C.

"And truths divine came mended from
his tongue."

Born Sept 5, 1888; A.B., A.M., Wake Forest College; President N. C. Group; Pastorate six years. Future work: Pastorate.

JAMES COLLINS RICHARDSON
D'Lo, Miss.

"An ardent emulator of every man's good
parts."

Born Sept. 15, 1890, Raleigh, Miss.; Married Miss Margaret Bland, Dec. 23, 1917; A.B., Clarke College, 1913; A.B., Miss. College, 1917; Pres. Miss. Group; Pastorate eight years; Chaplain 1st Lieut., A. E. F. Future work: Pastorate.

O. M. SEIGLER
Bowman, Ga

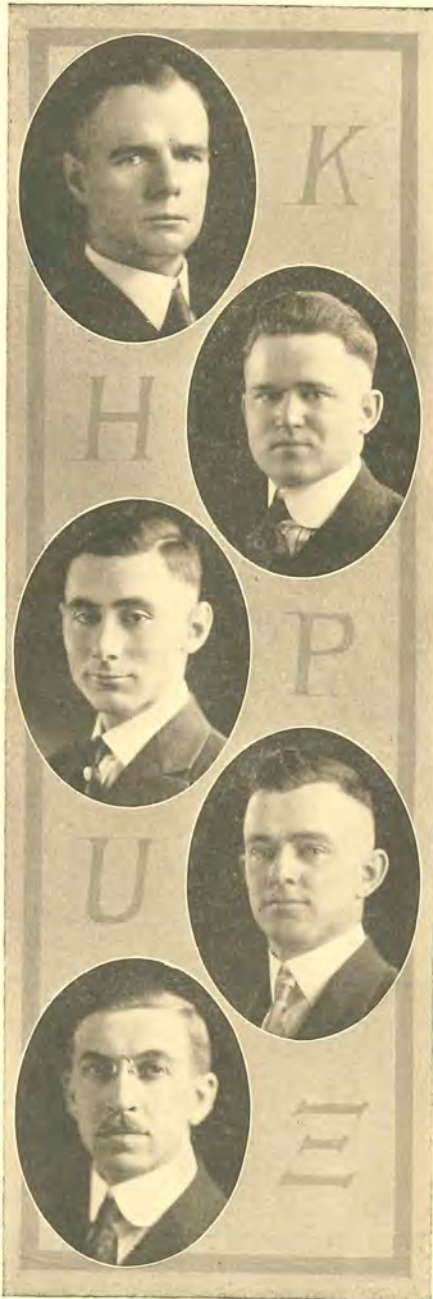
"Earnestness is enthusiasm tempered by
reason."

Born Nov. 16, 1892, Starr, S. C.; Married Miss Sarah Judson Minter, Aug., 1917; B.S., Mercer University; Pastorate seven years. Future work: Pastorate.

HUGH LEE SIMMONS
Oxford, Miss.

"The power of gentleness is irresistible."

Born Jan. 12, 1897, Oxford, Miss.; A.B., Univ. of Miss., 1919; Medical Student Tulane Univ. and Univ. Louisville; Supply Sergeant, U. S. Army, World War; A. O. R. D. Future work: Christian Education.



LEONARD KIRKLIN SIMPSON

Ware Shoales, S. C.

“ . . . The inward work and worth,
Of any mind, what other mind may judge
Save God who only knows the thing He
made?”

Born Nov. 27, 1885, Ware Shoales, S. C.;
Married Miss Cora Long, 1914; A.B., Fur-
man University, 1910; Pastorate ten years.
Future work: Pastorate.

WILLIE KYLE SISK

Dawson Springs, Ky.

“He only is a well made man who has a
good determination.”

Born Jan. 26, 1896; Married Miss Mary
Wallace, Aug. 18, 1914; A.B., Georgetown
College; Pastorate six years. Future work:
Pastorate.

JOHN LAWRENCE SLAUGHTER

Jackson, Miss.

“When night hath set her silver lamp on
high,
Then is the time for study.”

Born Aug. 28, 1897, Fannin, Miss.; B.S.,
Miss. A. & M. College; 2nd Lieut. U. S.
Army, World War; Basket Ball Team;
Pastorate two years. Future work: Pas-
torate.

BROWN B. SMITH

Rockmart, Ga.

“The keen spirit
Seizes the prompt occasion—makes the
thought

Start into instant action, and at once
Plans and performs, resolves and executes.”

Born Dec. 25, 1891, near Rome, Ga.; Mar-
ried Miss Vera Lester, 1910; A.B., Howard
College; B.S., M.A., Mercer University;
Christian Education five years; Pastorate
two years. Future work: Pastorate.

THOMAS EDWARD SMITH

Louisville, Ky.

“An affable and courteous gentleman.”

Born Louisville, Ky., 1890; Married Miss
Nell Y. Davis, 1916; A.B., Georgetown Col-
lege, 1917; Pastorate seven years. Future
work: Pastorate.



GEORGE MORRISON STARBIRD
Summerville, Mass.

"Beware the Ides of March."

Born Oct. 13, 1896, Summerville, Mass.; A.B., Harvard University; Student Newton Theological Institution; Pres. and Treas. Northern, Western and Foreign Group; Cor. Comm. S. M. I.; Special field work two years. Future work: Pastorate.

SILAS EMMET STEPHENS
Shantung, China.

"His smile doth beam,
E'en as the sun upon a summer day."

Born Nov. 16, 1874, Ball Ground, Ga.; Married Miss Irene Carter, Sept. 17, 1902; A.B., A.M., Mercer University; Christian Education two years; Missionary to China ten years. Future work: China.

THOMAS BERTRAM STOVER
Heath Springs, S. C.

"Wit and humor belong to genius alone."

Born June 12, 1893, Heath Springs, S. C.; A.B., Furman University, 1917; Field work S. S. Board two years; Group leader, Treas. Th.M. Class; Annual Staff. Future work; Educational, Foreign Mission Board.

CLIFTON CROMWELL THOMAS
Johnson Springs, Va.

"Sturdy, noble and genteel; alert in mind, buoyant in spirit; a congenial and well rounded man—to know him is to admire him."

Born March 29, 1893, Johnson Springs, Va.; Married Miss Elmyra Snead, June 29, 1918; Student Richmond College; Pastorate seven years. Future work: Pastorate.

ORRIS GOLDEN TILLMAN
Lake Wales, Fla.

"Jokes are the cayenne of conversation, and the salt of life."

Born Feb. 28, 1894, Bellville, Ga.; Student Ga. School of Technology and Wake Forest College; Member Executive Committee; Group Captain; Treas. Volunteer Band; Pastorate two years. Future work: Educational, Foreign Mission Board.



WILLIAM EMORY TRAINHAM
Richmond, Va.

"A gentleman makes no noise."

Born Jan. 14, 1897, Richmond, Va.; Married Miss Elizabeth Watts, May 3, 1921; A.B., Univ. of Richmond, 1920; Pastorate five years. Future work: Pastorate.

HAROLD WAYLAND TRIBBLE
Lake City, Fla.

"Man was born for two things—thinking and acting."

Born Nov. 22, 1899, Charlottesville, Va.; A.B., Richmond College; Executive Com.; Mgr. Basket Ball; Pres. Athletic Assn.; Sec. Soc. Miss. Inquiry; Pres. Ala.-Fla. Group; Group Captain, Business Manager Annual, 1922; Pastorate six years; S. A. T. C., World War. Future work: Pastorate.

SAMUEL BUSTER TUCKER
Republican Grove, Va.

"You are already love's firm votary
And cannot soon revolt."

Born Dec. 30, 1891, Republican Grove, Va.; A.B., Univ. Richmond, 1920; Special S. S. Field work two years. Future work: Pastorate.

FRANK TRENABY WALKER
Roanoke, Va.

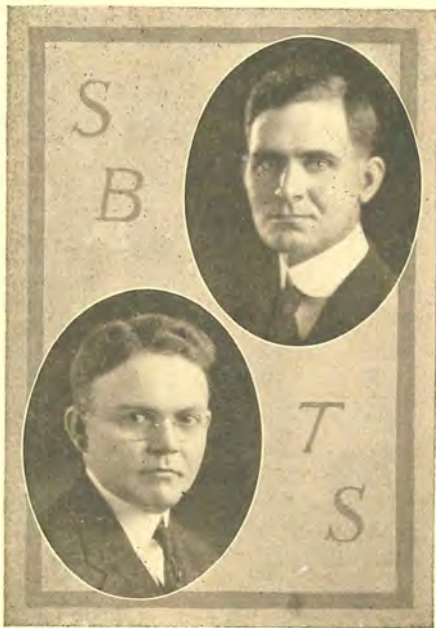
"Too low they build who build beneath
the stars."

Born Apr. 20, 1893, Rocky Mount, Va.; A.B., Roanoke College; Pres. Virginia Group; Captain Manly Group; Pastorate two years. Future work: Christian Education.

JAMES WASHINGTON WATTS
Laurens, S. C.

"The finest fruit earth holds up to its
Maker is a finished man."

Born Feb. 26, 1896, Laurens Co., S. C.; Married Miss Mattie Leila Reid, June 20, 1920; A.B., Furman Univ., 1915; Tutor in Hebrew, 1920-21; Vice-Pres. S. C. Group; Treas. Y. M. C. A.; Pres. Th.M. Class; Army Y. M. C. A. and Chaplain, 1st Lieut. U. S. Army, World War; Pastorate four years. Future work: Evangelistic, Foreign Mission Board.



PAUL WHEELER

Winder, Ga.

"True modesty is a discerning grace."

Born Nov. 24, 1888, near Winder, Ga.; Married Miss Elizabeth Cleveland, Aug. 19, 1917; A.B., Mercer University; Pres. Ga. Group; Vice-Pres. Th. M. Class; Member Student Council; Pastorate four years. Future work: Pastorate.

ARTHUR D. ZBINDEN

Birmingham, Ala.

"A true, loyal, sincere heart—a genuine delight."

Born Nov. 15, 1889, Knoxville, Tenn.; Married Miss Margaret Witt Wilkinson, Aug. 27, 1918; A.B., Howard College; Pastorate six years. Future work: Pastorate.



Bachelors in Theology

ARLIE E. CATE

Knoxville, Tenn.

"And still they gazed, and still the wonder
grew,
That one small head should carry all he
knew."

Born July 9, 1890, at Knoxville, Tenn.; A.B. Carson Newman College; A.M. University, Chicago; Veteran U. S. Army, World War; Pres. Tenn.-Ark. Group; Vice-President Th.B. Class. Future work: Pastorate.

HENRY JUDSON DAVIS

Portsmouth, Va.

"But in his duty prompt at every call
He watched and wept, he prayed and felt
for all."

Born Jan. 16, 1897, at Phoedus, Va.; Married Miss Josephine Ruth Funk, June 12, 1919; LL.B. Wake Forest College, 1919; U. S. Navy, World War; Annual Staff; Pastoral and Field Work, two years. Future work: Educational, Foreign Field.

EMORY GAYLE DIAMOND

Jay, Florida.

"No really great man ever thought him-
self so."

Born Sept. 9, 1892, at Jay, Fla.; Married Miss Leota Gardner, 1920; Student Columbia College, Fla.; A.B. University of Fla.; Pastoral and Field Work. Future work: Pastorate.

JOHN MASON EVERETT

Springfield, Mass.

"Ambition has no rest."

Born Jan. 9, 1872, Nova Scotia; Married Miss Della B. Patenaude, 1898; Student Am. Inter. College, Springfield, Mass.; Future work: Pastorate or Evangelistic work.

SELBY VERNON McCASLAND

Abilene, Tex.

"... Ye are wondrous strong,
Yet lovely in your strength."

Born, 1896, Comanche, Tex.; A.B. Simmons College; Annual Staff, 1922; Future work: Educational.



ROBERT HECTOR MCKINNON

"Honest men esteem and value nothing
so much in this world as a real friend."

Born, May 11, 1894, Columbia, S. C.;
Student University South Carolina; Uni-
versity of France; Sergeant U. S. A., A. E.
F.; Pastorate two years; Future work:
Pastorate.

JESSE RICHARDSON RANDOLPH

Cloverport, Ky.

"In arguing, too, the parson owned his skill,
For e'en though vanquished, he could argue
still."

Born at Cadiz, Ky.; Married Miss Todd
Schutt; Graduate Vanderbilt Training
School; Pastorate ten years; Future work:
Pastorate.

THOMAS LEO SASSER

Brookhaven, Miss.

"The flowering of civilization is the fin-
ished man, the man of sense, of grace, of
accomplishment, of social power— a true
gentleman."

Born Aug. 23, 1888, Wesson, Miss.; Mar-
ried Miss Josie Oliver, Dec. 25, 1912; A.B.
Mississippi College, 1912; Student Baptist
Bible Institute; Secy. Army Y. M. C. A.,
World War; Annual Staff; Pastorate six
years. Future work: Pastorate.

SANFORD ALLIA TAYLOR

Birmingham, Ala.

"He most lives, who thinks most, feels
the noblest, acts the best."

Born Dec. 21, 1888, at Bladen Springs,
Ala.; Married Miss Mary Mabel McCul-
lough, Aug. 22, 1917; A.B. Howard College;
Pastoral experience; Future work: Pastor-
ate.

CLINTON R. WATROUS

Troy, N. Y.

"Resort to sermons, but to prayers most;
Praying is the end of preaching."

Born May 19, 1885, at Mystic City, N.
Y.; Married Miss Mildred Van Duyne, Sept.
27, 1907; Pastoral and Field Work; Fu-
ture work: Pastorate.



PERRY FLINT WEBB
Ft. Smith, Ark.

"Hear how he clears the points o' faith,
Wi' rattlin' and wi' thumpin'!
Now meekly calm, now wild in wrath,
He's stampin', an' he's jumpin'!"

Born June 2, 1897, at Ozark, Ark.; Married Miss Thelma Stahl, May, 1920; A.B. Ouachita College; Group Captain Student Organization; Pastoral, Evangelistic and Missionary work; Future work: Pastorate.

The Th. B. Class

OFFICERS

PERRY F. WEBB*President*
 ARLIE E. CATE*Vice-President*
 CLINTON R. WATROUS.....*Secretary and Treasurer*
 ROBT. H. MCKINNON*Class Editor*

We, the members of the Th. B. Class of 1922, have come to the full leaf and flower of graduation. Our seminary life, with its trials, its joys and its blessed fellowships, is closing; but another life with enlarged usefulness is unfolding before us, and its boundless opportunities beckon us onward to nobler efforts.

"Toiling,—rejoicing,—sorrowing,
 Onward thru life each goes;
 Each morning sees some task begun,
 Each evening sees its close;
 Something attempted, something done,
 Has earned a night's repose."

We said we had come to the "full" leaf and flower of graduation—but, after all, what is life but a succession of graduations? With faith in God and love for our fellowmen, each day we wish to graduate, and, like the mythical Phoenix, rise from the ashes of our dead selves into lives of increasing beauty, and fragrance, and usefulness.

The "full" leaf and flower will come when we launch out on the shoreless sea, and in the light of His smile, sing the "Song of Moses and the Lamb."



Graduates in Theology

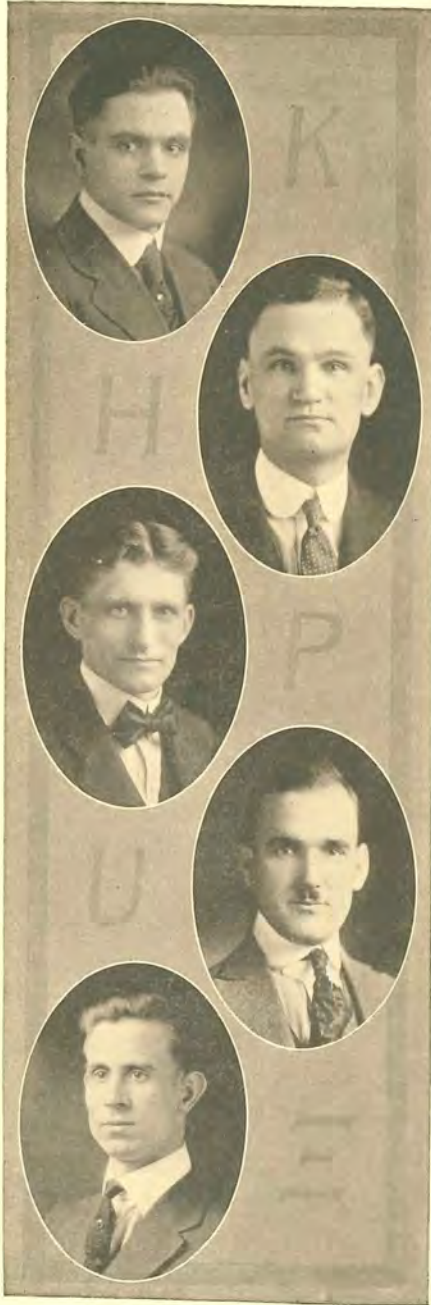
CLASS OFFICERS

M. F. BOOE	<i>President</i>
S. M. LAWTON	<i>Vice-President</i>
J. T. LITTLEJOHN, JR.	<i>Secretary-Treasurer</i>
JAMES W. MOFFITT	<i>Class Editor</i>

“Those who think they have done much, see but little to do,” said Dr. Samuel Johnson, a little more than a century ago. May we think of this pithy saying as we go out to assume our duties as good and faithful ministers of our Lord Jesus Christ. May we think of the period just spent as a period of preparation. The many beautiful associations that cluster around the fair name of our Alma Mater shall never be forgotten.

“We, with our faces turned high to the Eastward,
Proud of our place in the vanguard of truth,
Will sing unto Thee a new song of thanksgiving.”

A new day has dawned; a new season has come; a new year is upon us. We will go out with an upward, forward look under the leadership of the Holy Spirit. This is an age of upheaval, a period of unrest, a time of doubt, an epoch of rapidly advancing civilization. As messengers of our Saviour may we offer a program of constructiveness to the disturbed, a doctrine of satisfaction to the restless, a message of assurance to the doubting, and a ringing challenge to the new world. With a fearlessness tempered by love, and with a gripping assurance chastened by living experience, may we preach and teach the unsearchable riches of Christ to the children of men everywhere.



PATELIMON ANDRISAN

Roumania.

“Sweet are the thoughts that savor of content—

The quiet mind is richer than a crown.”

Born, 1891, in Roumania; Pastoral and Christian Editorial Work; Future work: Evangelistic and Educational, Foreign Field.

MILLARD F. BOOE

Cana, N. C.

“A king can make a belted Knight,
A Marquis, Duke and a’ that;
But an honest man’s above his might.”

Born Feb. 10, 1890; Student Wake Forest College; Corp. U. S. A., A. E. F.; Division Citation for bravery; D. S. C. Citation from French Government; Pres. Th.G. Class, S. B. T. S.; Pastorate two years. Future work: Pastorate.

RUSSELL MORSE BROUGH

Los Angeles, Calif.

“Let your own discretion be your tutor—
Suit the action to the word.”

Born May 3, 1896, at Paterson, N. J.; Married Miss Celeste Foulkes, Aug. 29, 1920; B.A. Occidental College, Los Angeles, Cal.; Student Rochester Seminary; Chaplain, 1st. Lieut., U. S. Army, World War; youngest chaplain in U. S. Army; Pastorate five years; Future work: Pastorate.

ALBERT WOOD COATES

Lyells, Va.

“He who speaks honestly cares not.”

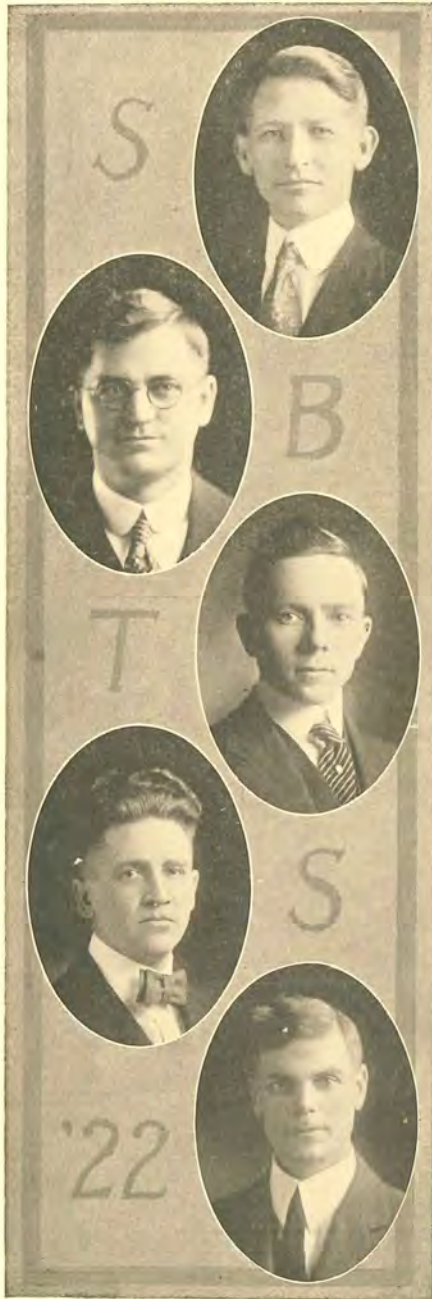
Born Feb. 18, 1893, Lyells, Va.; Student Richmond College; Veteran U. S. Army, World War; Pastorate one year; Future work: Pastorate.

JOSEPH H. DEEMER

Columbus, Ohio

“A cheerful man is pre-eminently a useful man.”

Born Aug. 16, 1894, Columbus, Ohio; Married Miss Nell Doughty; Vice-President North, West and Foreign Group, S. B. T. S.; Corp. U. S. A., A. E. F.; Pastoral experience; Future work: Pastorate.



ROBERT LEE RANDOLPH

Bryson City, N. C.

"Joy rises in me, like a summer's morn."

Born Sept. 21, 1893, in Yancey County, N. C.; Married Miss Flora Sneed, 1916; Student Wake Forest College; Pastorate two years; Future work: Enlistment.

JAMES WINFIELD ROBERTS

Atlanta, Ga.

"A mind content both crown and kingdom is."

Born April 10, 1885, at Graham, Ala.; Married Miss Lenda Floy Roberts, Dec. 18, 1907; Student Mercer University; Future work: Pastorate.

KEMP DELETTE SMITH

Mullins, S. C.

"To believe your own thought—that is genius."

Born Sept. 27, 1892, at Marion, S. C.; Married Miss Georgie Johnson, June, 1917; Student State University of S. C.; A.B. Furman University; Pastorate six years; Future work: Pastorate.

WILLIAM MADISON SMITH

Grant, Ky.

"Their work doth not perish with them."

Born March 7, 1889, Grant, Ky.; Married Miss Isabella Sleet Walton, Sept. 10, 1913; Student, William Jewell and Georgetown Colleges, and University of Louisville; Pastorate nine years; Future work: Pastorate.

CARSON TAYLOR

Richardson, Texas.

"A voice more thrilling ne'er was heard
In springtime from the cuckoo bird."

Born Oct. 6, 1881, at Auburn, Ky.; Married Miss Cora Esther Lee, May 9, 1910; Student, Howard Payne College, Texas Baptist University and Southwestern Baptist Seminary; Treas. Southwestern Group; Leader Music, Norton Hall; Pastorate six years and Evangelist ten years; Future work: Pastorate or Home Mission Field.



HARLEY JAMES FRANCIS

Grantsville, W. Va.

"'Tis noble to be good."

Born July 25, 1891, Grantsville, W. Va.; Married Miss Emily Keith, May 5, 1915; Pastorate five years; Future work: Pastorate.

SPURGEON CADE GLOSSEN

Mandale, N. C.

"The brave man possesses the world."

Born Nov. 14, 1893, in Chatham County, N. C.; Married Miss Betsey Harward, Aug. 17, 1920; B.A. Wake Forest College; Future work: Pastorate.

ROBERT P. HAMLYN

Brooklyn, N. Y.

"I roam the glorious world with praise."

Born Feb. 9, 1893, at Brooklyn, N. Y.; Married Miss Helen C. Callahan, 1914; Future work: Pastorate or Evangelistic Work, Foreign Mission Board.

HENRY MILTON HODGENS

Travelers Rest, S. C.

"Cheerful people live long in our memories"

Born June 18, 1885, at Greenville, S. C.; Married Miss Emily Cunningham, Sept., 1915; A.B., Furman University; Pastorate five years; Future work: Pastorate or Evangelistic Work, Foreign Field.

FRANKLIN G. HULING

"I break the spirit's cloudy bands,
A wanderer in many lands."

Born, 1887, Chicago, Ill.; Married Miss Zella Hall, 1921; A.M. University of Southern California; Bible Institute, Los Angeles; Camp Pastor and Chaplain, 1st Lieut., U. S. Army, World War; Pastorate ten years; Future work: Pastorate.



SAMUEL MILLER LAWTON

Greenville, S. C.

"I bathe my spirit in blue skies
and taste the springs of life."

Born Nov. 12, 1899, at Estil, S. C.; A.B. Furman University, 1920; Eureka man, Vice-president Th.G. class; Future work: Evangelistic, Foreign field.

JOHN THOMAS LITTLEJOHN, JR.

Scranton, S. C.

"The brave man will go on his way
rejoicing."

Born June 13, 1899, at Parksville, S. C.; Married Miss Marguerite Pierce, Aug. 24, 1921; A.B. Furman University, 1920; 2nd Lieut., U. S. A., World War; S. S. Field work; Future work: Evangelistic, Foreign Field.

JOHN WILLIAM MOFFATT

Dundee, Scotland.

"Gather ye rosebuds while ye may,
Old time is still a flying."

Student Dundee Technical School and Moody Bible Institute.

JAMES W. MOFFITT

Chattanooga, Tenn.

"My strength is as the strength of ten,
Because my heart is pure."

Born March 2, 1898, Chattanooga, Tenn.; Student University of Arkansas and University of Louisville; Editor Th.G. Class; Future work: Pastorate or Educational, Foreign Field.

JOHN LUTHER MOYE

Evergreen, Ala.

"Seest thou a man diligent in business,
He shall stand before kings."

Born Nov. 23, 1892, at Patsburg, Ala.; Married Miss Esther Billingsley, Sept. 23, 1921; Graduate State Normal College, Florence, Ala.; A.B. Howard College; President Fla.-Ala. State Group; Pastorate four years; Associational Missionary two years; Future work: Evangelistic, Foreign Field.



GEORGE ROY TIMBROOK
Sapulpa, Okla.

"No man was ever glorious who was not laborious."

HUGH PETE VENSON
Cumberland, Md.

"I wait with joy the coming years."

Born Sept. 15, 1889, N. C.; Married Miss Pattie Fowler, Dec. 9, 1914; LL.B. Wake Forest College, 1911; Pastorate seven years; Future work: Pastorate.

JESSE LEE ROY HENDERSON
Gainesville, Ga.

"If it be a gentleman and a scholar ye seek, ye have found him."

JAMES LUMPKIN REID
Gainesville, Ga.

"Let me live in a house by the side of the road and be a friend to man."

О КИПТЕ

19

22







KENTUCKY STATE GROUP

- | | | |
|-------------------------------|-------------------------------|------------------------------|
| Adams, J. D. B. | Farmer, G. | Morris, Mr. and Mrs. J. R. |
| Bell, Mr. and Mrs. J. M. | Franklin, Mr. and Mrs. B. E. | Prewitt, C. P. |
| Binns, Mr. and Mrs. W. P. | Freeman, Mr. and Mrs. J. D. | Price, Mr. and Mrs. J. F. |
| Bowling, B. F. | Fries, H. C. | Randolph, J. R. |
| Bruce, H. D. | Fuqua, Mr. and Mrs. J. F. | Ray, S. C. |
| Burns, Mr. and Mrs. H. S. | Gebett, A. F. | Riddell, Mr. and Mrs. R. L. |
| Burns, Mr. and Mrs. H. D. | Greenaway, Mr. and Mrs. W. L. | Robinson, Mr. and Mrs. O. L. |
| Bush, Mr. and Mrs. B. H. | Haines, Mr. and Mrs. M. E. | Rose, Mr. and Mrs. T. D. |
| Calhoun, Joe | Harrison, Mr. and Mrs. W. C. | Sanders, Mr. and Mrs. W. H. |
| Carpenter, Mr. and Mrs. J. W. | Henderson, R. | Scantland, W. S. |
| Clybourne, Mr. and Mrs. N. B. | Hillard, B. H. | Sisk, Mr. and Mrs. W. K. |
| Clymore, M. | Hinds, Mr. and Mrs. C. F. | Smith, Mr. and Mrs. A. M. |
| Coakley, W. S. | Hunt, Mr. and Mrs. M. P. | Smith, B. B. |
| Cooper, Mr. and Mrs. M. A. | Jasper, Mr. and Mrs. R. F. | Stone, Mr. and Mrs. F. D. |
| Cunagin, Wm. | Kerby, Mr. and Mrs. G. M. | Stulck, Mr. and Mrs. A. A. |
| Cundiff, Mr. and Mrs. B. H. | Kimbrough, Mr. and Mrs. B. T. | Tiffany, Mr. and Mrs. H. W. |
| Cundiff, Mr. and Mrs. R. B. | Kirkland, Mr. and Mrs. J. P. | Turner, R. H. |
| Curl, W. H. | Lacy, E. St. C. | Veech, Mr. and Mrs. E. L. |
| Darter, J. E. | Martin, J. W. | Welch, Mr. and Mrs. C. W. |
| Davis, E. D. | Masden, Mr. and Mrs. M. H. | Willett, Mr. and Mrs. D. H. |
| Duncan, Mr. and Mrs. B. H. | May, Mr. and Mrs. E. V. | Williams, H. P. |
| Eastes, Mr. and Mrs. H. M. | Minks, O. L. | Wilson, Mr. and Mrs. L. P. |



VIRGINIA, WEST VIRGINIA, MARYLAND GROUP

- | | | |
|------------------------------|------------------------------|------------------------------|
| Allen, T. C. | Francis, Mr. and Mrs. H. J. | Reamy, H. J. |
| Bailey, Mr. and Mrs. L. E. | Garber, Mr. and Mrs. J. H. | Reed, H. |
| Barbe, Mr. and Mrs. J. G. | Hall, H. P. M. | Roberts, L. M. |
| Barker, A. F. | Harrison, F. H. | Saunders, J. G. |
| Barker, Mr. and Mrs. E. E. | Hibbs, W. W. | Simms, R. W. |
| Beamer, Mr. and Mrs. M. F. | Hickerson, C. V. | Terrell, G. T. |
| Beasley, T. W. | Hill, S. S. | Thomas, C. C. |
| Blake, Mr. and Mrs. P. | Hite, J. R. | Thomas, Mrs. C. C. |
| Brame, Mr. and Mrs. P. E. | Hutchins, C. T. | Thomas, Mr. and Mrs. C. H. |
| Burke, K. E. | Jones, J. P. | Thornton, F. R. |
| Caverlee, Mr. and Mrs. R. F. | Kelley, R. A. | Trainham, Mr. and Mrs. W. E. |
| Coates, A. W. | Loving, W. R. | Tucker, S. B. |
| Croxton, Mr. and Mrs. T. W. | Mears, Mr. and Mrs. C. G. | Vinson, H. P. |
| Davis, G. W. | Miller, Mr. and Mrs. C. C. | Vinson, Mrs. H. P. |
| Davis, Mr. and Mrs. H. G. | Mitchell, B. E. | Walker, F. T. |
| Deems, M. M. | Nicholas, Mr. and Mrs. H. L. | Willingham, E. B. |
| Dietz, Mr. and Mrs. O. A. | Owen, S. C. | Withers, Mr. and Mrs. A. B. |
| Fox, L. H. | Putney, _____ | |



GEORGIA GROUP

Bell, Mr. and Mrs. J. T.
 Carroll, H. L.
 Carswell, J. H.
 Cochran, Mr. and Mrs. F.
 Cutts, Mr. and Mrs. A. S.
 Danner, W. H.
 Dasher, Mr. and Mrs. G. B.
 Dupree, Mr. and Mrs. G. E.
 Henderson, J. L.
 Ivey, J. A.
 Jenkins, Mr. and Mrs. E. L.
 Jones, Mr. and Mrs. B. E.
 Landrum, Mr. and Mrs. D. A.
 Lane, J. L.
 Matheson, Mr. and Mrs. J. D.
 McConnell, Mr. and Mrs. F. C.

Polhill, L. M.
 Reed, J. L.
 Reed, Mr. and Mrs. M. D.
 Reed, Mr. and Mrs. W. H.
 Ricks, C. T.
 Roberts, Mr. and Mrs. J. W.
 Russell, Mr. and Mrs. R. T.
 Sanders, A. N.
 Seigler, Mr. and Mrs. O. M.
 Shaw, Mr. and Mrs. Z.
 Teresi, Mr. and Mrs. J. M.
 Tooke, Mr. and Mrs. C. C.
 Underwood, Mr. and Mrs. J. L.
 Walker, Mr. and Mrs. F. E.
 West, Mr. and Mrs. W. F.
 Wheeler, Mr. and Mrs. P.



NORTH CAROLINA GROUP

- | | |
|--------------------------------|------------------------------|
| Andrews, Mr. and Mrs. V. L. | Mauldin, S. P. |
| Blackman, Mr. and Mrs. L. E. | Morris, Mr. and Mrs. B. E. |
| Booe, M. F. | Murray, J. G. |
| Brickhouse, Mr. and Mrs. R. E. | Nichols, H. L. |
| Canipe, Mr. and Mrs. J. C. | Pardue, T. F. |
| Childress, Mr. and Mrs. R. L. | Price, Mr. and Mrs. J. L. |
| Colston, Mr. and Mrs. J. F. | Randolph, Mr. and Mrs. R. L. |
| Earp, Mr. and Mrs. G. | Redwine, R. K. |
| Everett, J. R. | Renegar, G. D. |
| Feezar, F. C. | Stevens, C. H. |
| Foster, C. H. | Stewart, Mr. and Mrs. E. R. |
| Glosson, Mr. and Mrs. S. C. | Tate, L. R. |
| Gravitte, O. C. | Tate, Mr. and Mrs. W. T. |
| Harrill, Mr. and Mrs. B. H. | Teague, Mr. and Mrs. L. W. |
| Herring, O. F. | Teague, N. C. |
| Herring, R. A. | Trueblood, E. J. |
| Hester, Mr. and Mrs. H. I. | Walters, Mr. and Mrs. T. E. |
| Hicks, Mr. and Mrs. P. A. | White, P. E. |
| Hill, Mr. and Mrs. D. E. | White, Mr. and Mrs. R. K. |
| Hippa, F. L. | Williams, Mr. and Mrs. W. W. |
| Hudson, E. P. | Woodward, F. T. N. |
| Hudson, Mr. and Mrs. S. F. | Yates, K. M. |
| Hurley, D. T. | Brown, J. M. |
| Ingram, B. | |



MISSISSIPPI GROUP

Ballard, E. E.
 Breland, C. L.
 Clark, H. C.
 Clark, R. G.
 Eure, Mr. and Mrs. O. A.
 Hall, D. H.
 Hardy, W. E.
 Kitchings, A. A.
 Latimer, Mr. and Mrs. T. J.
 Leavell, L. O.
 McCall, D. A.

Olander, C. J.
 Palmer, J. N.
 Parker, N. H.
 Richardson, J. C.
 Riser, J. S.
 Rouse, I. E.
 Sasser, T. L.
 Slaughter, J. L.
 Tinnin, J. V.
 Tully, Mr. and Mrs. H. L.
 Simmons, H. L.



NORTHERN, WESTERN AND FOREIGN GROUP

CALIFORNIA

Brougher, Mr. and Mrs. R. M.
 Dean, A. P.
 Huling, Mr. and Mrs. F. G.

ILLINOIS

Daniels, Mr. and Mrs. W. S.
 Sprague, Mr. and Mrs. S.

INDIANA

Banister, M. L.
 Bates, W. C.
 Cauble, Mr. and Mrs. W. H.
 Clegg, E. A.
 Crafton, L. G.
 Durham, J. C.
 Ellers, G. W.
 Gilbert, G. S.
 Harbin, J. E.

Hoar, Mr. and Mrs. W.
 Hottel, Mr. and Mrs. J. M.
 King, Mr. and Mrs. G. T.
 Kirby, C. L.
 McFadden, F. D.
 Mosier, J. P.
 Mosier, L. B.
 Reece, R. E.
 Sifred, Mr. and Mrs. J. E.
 Tolbert, Mr. and Mrs. F. M.
 Wright, Mr. and Mrs. N. B.

IOWA

Gillet, Mr. and Mrs. S. A.
 Masselink, W.
 Swenson, Mr. and Mrs. A.

KANSAS

Mullins, Mr. and Mrs. E. L.



NORTUERN, WESTERN AND FOREIGN GROUP—Continued.

MASSACHUSETTS

Everette, J. M.
Nordlander, E. J.
Starbird, G. M.

MICHIGAN

Deane, F. W.

MINNESOTA

Johnson, E. A.

MONTANA

Aldinger, C.

NEBRASKA

Larson, R. H.

NEW YORK

Benedict, Mr. and Mrs. L. W.
Hamlyn, Mr. and Mrs. R. P.
Harrison, Mr. and Mrs. J. B.
Hutton, L. V. S.
Northrup, M. E.
Sloan, W. A.
Smith, J. M.
Watrous, Mr. and Mrs. C. R.

NORTH DAKOTA

Dryden, J. G.

OHIO

Conley, Mr. and Mrs. H.
Deemer, J. H.
Eastep, D. B.
Gaines, Mr. and Mrs. L. S.
Hayden, Mr. and Mrs. W. E.
Naylor, C. M.
Poorman, Mr. and Mrs. J. W.
Pottorf, Mr. and Mrs. E. C.

PENNSYLVANIA

Burchfield, J. W.
Gould, J. J.
Long, W. G.
Neilson, J. A.

SOUTH AFRICA

Snyman, L. P.

ARGENTINA

Logan, A. J.
Logan, Mr. and Mrs. R. M.

CANADA

Moule, H.

CHINA

Napier, Mr. and Mrs. A. Y.
Stephens, Mr. and Mrs. S. E.

ITALY

Chiminelli, P.

JAPAN

Nakagawa, T.

PORTO RICO

Lopez, J. F.

ROUMANIA

Andrisan, P.

SCOTLAND

Moffatt, Mr. and Mrs. J. W.



SOUTH CAROLINA GROUP

Baldwin, G. H.
 Beam, J. P.
 Bostick, E. M.
 Crain, Mr. and Mrs. E. B.
 Criminger, F. O.
 Edwards, Mr. and Mrs. J. M.
 Ergle, Mr. and Mrs. H. H.
 Fuller, E. A.
 Harrison, E. M.
 Hodgens, H. M.
 Jenkins, Mr. and Mrs. W. B.
 Johnson, Mr. and Mrs. E. B.
 Kinnett, A. D.
 Lamereau, C. O.
 Lawton, S. M.

Ledbetter, J. E.
 Ledbetter, V. K.
 Littlejohn, Mr. and Mrs. J. T.
 McKinnon, R. H.
 Moore, G. H.
 Morris, Mr. and Mrs. H. O.
 Simpson, Mr. and Mrs. L. K.
 Smith, Mr. and Mrs. K. D.
 Stover, T. B.
 Thomason, B. W.
 Watson, Mr. and Mrs. S. L.
 Watts, J. W.
 Welchel, S. E.
 Wood, A. B.
 Wood, Mr. and Mrs. J. G.



FLORIDA-ALABAMA GROUP

Adams, W. M.
 Bealle, T. B.
 Berkstresser, J. E.
 Branch, C. W.
 Cunningham, C.
 Diamond, E. G.
 Dillard, W. H.
 Dillon, Mr. and Mrs. R. E.
 Dockery, L. W.
 Duggar, Mr. and Mrs. A. C.
 Gardner, V. M.
 Gibson, T. B.
 Gregory, Mr. and Mrs. W. H.
 Kirby, C. L.
 Knight, J. R.
 Link, H. H.
 Lopez, J. L.
 McGinty, Mr. and Mrs. H. H.
 Mitchell, Mr. and Mrs. G. F.

Moore, R. A.
 Moore, E. G.
 Moye, Mr. and Mrs. J. L.
 Parker, E.
 Patterson, I. N.
 Pearson, F. B.
 Pickens, Mr. and Mrs. J. D.
 Pittard, E. R.
 Price, Mr. and Mrs. W. F.
 Reid, A. B.
 Reid, A. H.
 Swann, P. P.
 Taylor, Mr. and Mrs. S. A.
 Tillman, O. G.
 Tribble, H. W.
 Williams, H. G.
 Williams, Mr. and Mrs. J. O.
 Zachert, R. E.
 Zbinden, Mr. and Mrs. A. D.



SOUTHWESTERN AND MISSOURI GROUP

Appleby, D. P.
 Barton, W. H.
 Bolin, D. R.
 Carson, Mr. and Mrs. R. G.
 Chastain, O. J.
 Clark, J. R.
 Cole, W. R.
 Connely, R. E.
 Criminger, F. O.
 Driskell, Mr. and Mrs. H. L.
 Enete, W. W.
 Hitt, Mr. and Mrs. H. E.
 Jackson, C. B.
 Leazer, R. W.
 Lloyd, Mr. and Mrs. D. B.

Magee, A. C.
 Marler, Mr. and Mrs. H. L.
 McCasland, S. V.
 McCulloch, R. R.
 McGavock, Mr. and Mrs. J. W.
 Norman, Mr. and Mrs. M.
 Norwood, H. R.
 Patterson, Mr. and Mrs. R. B.
 Pollard, Mr. and Mrs. W. A.
 Stone, C. C.
 Taylor, Mr. and Mrs. W. C.
 Thompson, P.
 Timbrook, Mr. and Mrs. G. R.
 Williams, Mr. and Mrs. J. H.
 Yachini, C.



TENNESSEE-ARKANSAS GROUP

- | | |
|----------------------------|---------------------------|
| Atchley, C. N. | Owen, R. N. |
| Bain, S. C. | Pitt, Mr. and Mrs. J. C. |
| Blaylock, A. P. | Raines, W. C. |
| Cate, A. E. | Ridenhour, G. L. |
| Cline, R. M. | Seat, W. R. |
| Dunn, Mr. and Mrs. G. L. | Sedberry, L. S. |
| Falls, Mr. and Mrs. M. O. | Smith, Mr. and Mrs. G. C. |
| Ford, Mr. and Mrs. J. L. | Traylor, J. V. A. |
| Hacker, Mr. and Mrs. S. S. | Watts, T. J. |
| Maer, Mr. and Mrs. W. Q. | Webb, Mr. and Mrs. P. F. |
| Moffitt, J. W. | Wilson, I. L. |
| Morrow, Mr. and Mrs. C. | Younce, W. C. |
| Neal, Mr. and Mrs. J. | |



JUNIOR CHURCH HISTORY CLASS

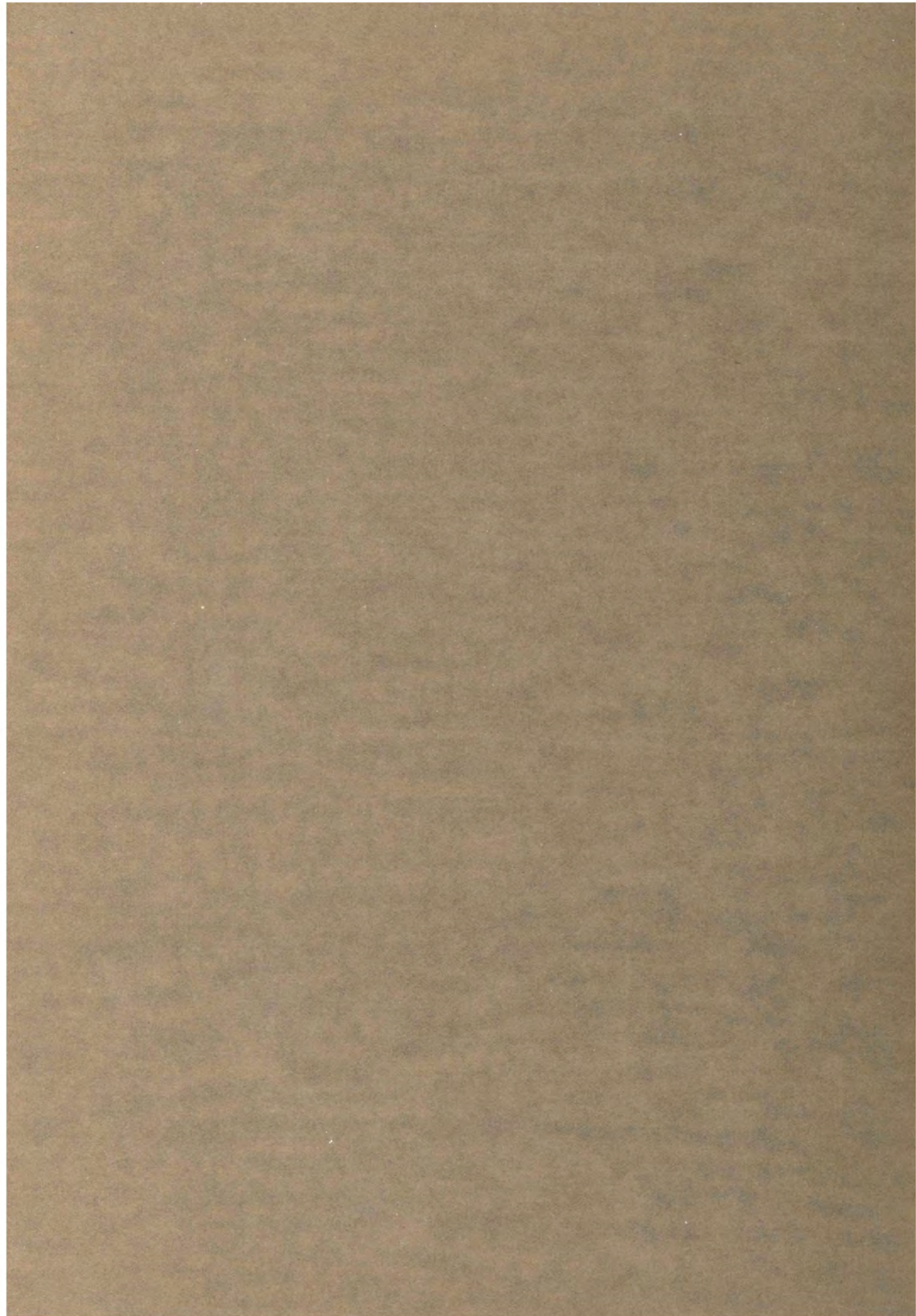
Organizations



Lily Pond

Cherokee Park Louisville, Ky.

Book Four



JUNIOR CHURCH HISTORY CLASS

Aldinger, C.	Gaines, L. S.	Ledbetter, V. K.	Renegar, G. D.
Ballard, E. E.	Garber, J. H.	Logan, A. J.	Roberts, J. W.
Barbe, J. G.	Gillett, S. A.	Littlejohn, J. T.	Rouse, I. E.
Bealle, T. B.	Glossen, S. C.	Magee, A. C.	Sanders, A. N.
Benedict, L. W.	Hamlyn, R.	Matheson, J. D.	Sassar, T. L.
Berkstresser, J. E.	Hardy, W. E.	McCasland, S. V.	Sedberry, L. S.
Binns, W. P.	Harrill, B. H.	McCulloch, R. R.	Shaw, Z.
Bolin, D. R.	Harrison, E. M.	McGavock, J. W.	Smith, K. D.
Breland, C. L.	Herring, R. A.	Minks, O. L.	Stone, J. L.
Booe, M. F.	Hickerson, C. V.	Mitchell, B. E.	Stulek, A. A.
Brougher, R. M.	Hill, D. E.	Miller, C. C.	Tate, W. T.
Bush, B. H.	Hinds, C. F.	Moffitt, J. W.	Teague, L. W.
Burchfield, J. W.	Hite, J. R.	Moffatt, J. W.	Taylor, W. C.
Canipe, J. C.	Hodgens, H. M.	Moye, J. L.	Timbrook, G. R.
Carson, R. G.	Hutton, L. V. S.	Nichols, H. L.	Timmin, J. V.
Coates, A. W.	Jackson, C. B.	Northrup, M.	Tully, H. L.
Cole, W. R.	Jenkins, E. L.	Owen, R. N.	Underwood, J. L.
Connely, R. E.	Jenkins, W. B.	Palmer, J. N.	Veech, E. L.
Crull, N.	Jones, J. P.	Parker, N. H.	Walker, F. E.
Darter, J. E.	Kelly, R. A.	Pickens, J. D.	Walters, T. E.
Davis, E. D.	Kerby, G. M.	Pittard, C. R.	Williams, H. G.
Deemer, J. H.	Kirby, C. L.	Polhill, L. M.	Wilson, I.
Duggar, A. C.	Kinnett, A. D.	Randolph, J. R.	West, W. F.
Enete, W. W.	Kirkland, J. P.	Randolph, R. L.	Young, L. V.
Eure, O. A.	Lane, J. L.	Reed, J. L.	
Francis, H. J.	Lawton, S. M.	Reed, M. D.	

LADIES

Allen, Miss Julia	Gayle, Miss Sarah	Rogers, Miss Rebecca
Anderson, Miss Essie	Godbold, Miss Ina	Sharpley, Miss Ruby
Armstrong, Miss Crystal	Goodman, Miss Ava	Thomas, Miss Della
Banks, Miss Anna	Gray, Miss Pansy	Tevvett, Miss Bessie
Beauchamp, Miss Bessie	Headen, Miss Mary	Vinson, Miss Gussie
Berghauser, Miss Sophia	Hill, Miss Virginia	Verdery, Miss Edna
Bockelman, Miss Currie	Hunter, Miss Bonnie	Walters, Miss Mary
Boweman, Miss Florence	Johnson, Miss Alice	Watkins, Miss Elizabeth
Bucy, Miss Wilma	Jones, Miss Eva	Weaver, Miss Grace
Charleton, Miss Gertrude	Kendall, Miss Rachel	Wilhite, Miss Myra
Compere, Miss Amy	Lawton, Miss Mary	Wright, Miss Floy
Crawford, Miss Mary	Lawton, Miss Phebe	Yeargen, Miss Lucile
Crosby, Miss Lucy	Leonard, Miss Marie	Blackman, Mrs. L. E.
Davis, Miss Alberta	Littlejohn, Miss Myrtle	Eure, Mrs. O. A.
Davis, Miss Maude	Marlowe, Miss Ora	Huling, Mrs. F. G.
Decker, Miss Eleanor	Mayer, Miss Ruby	Littlejohn, Mrs. J. T.
Dye, Miss Jessie	McCalip, Miss Maud	Pitt, Mrs. J. C.
Elam, Miss Elma	Monroe, Miss Maggie	Teague, Mrs. L. W.
Fait, Miss Myrtle	Moyers, Miss Lois	Thomas, Mrs. C. C.
Frey, Miss Mayme	Murray, Miss Katie	Tooke, Mrs. C. C.
Fuller, Miss Myrtle	Olive, Miss Grace	Young, Mrs. L. V.
Garner, Miss Maud	Quarles, Miss Evelyn	



OLD TESTAMENT CLASS—MEN

- | | | | |
|-----------------|-------------------|-----------------|------------------|
| Aldinger, C. | Brown, J. M. | Crain, E. B. | Fox, L. H. |
| Allen, T. C. | Bruce, H. D. | Cundiff, B. | Franklin, B. E. |
| Atheyley, C. N. | Burehfield, J. W. | Daniels, W. S. | Fuqua, J. F. |
| Bailey, L. E. | Burke, K. E. | Cunagin, Wm. | Fries, H. C. |
| Appleby, D. P. | Burns, H. D. | Danner, W. H. | Gaines, L. S. |
| Bain, S. C. | Burns, H. S. | Dasher, G. B. | Gardner, V. M. |
| Baldwin, G. B. | Carroll, L. | Davis, G. W. | Gebelt, A. F. |
| Barbe, J. G. | Caverlee, R. F. | Deane, F. W. | Gilbert, G. S. |
| Barker, A. F. | Chastain, O. J. | Deems, M. M. | Gould, J. |
| Barker, E. E. | Childress, R. N. | Dillard, W. H. | Gravitte, O. C. |
| Bates, W. C. | Clark, R. G. | Driskell, H. L. | Green, G. |
| Beam, J. P. | Clegg, E. A. | Dryden, F. G. | Greenaway, W. L. |
| Bell, J. M. | Cline, R. M. | Durham, C. | Gregory, W. H. |
| Bell, J. T. | Colston, J. F. | Earp, G. J. | Hall, H. P. M. |
| Beamer, M. F. | Conley, H. | Eastes, H. M. | Hacker, S. S. |
| Blaylock, A. P. | Curl, W. H. | Edwards, J. M. | Hall, D. H. |
| Bowling, B. F. | Curt, W. H. | Ellers, G. W. | Hardy, W. E. |
| Blake, P. | Connely, R. E. | Everett, J. R. | Harrison, F. H. |
| Brame, P. E. | Crafton, L. G. | Farmer, G. | Harrison, J. B. |
| Branch, C. W. | Cooper, M. A. | Ford, J. L. | Harrison, W. C. |
| Breland, C. L. | Cundiff, R. B. | Foster, C. H. | Henderson, R. |

OLD TESTAMENT CLASS—MEN—Continued.

Herring, R. A.	Loving, W. R.	Pottorf, E. C.	Swann, P. P.
Hibbs, W. W.	Maer, W. Q.	Prewitt, C.	Swenson, A.
Hillard, B. H.	Matheson, J. D.	Price, J. L.	Tate, L. R.
Hicks, P. A.	Marler, H. L.	Robinson, O. L.	Tate, W. T.
Hill, S. S.	Martin, J. W.	Randolph, J. R.	Teague, N. C.
Hipps, F. L.	Masden, M. H.	Ridenour, G. L.	Teresi, J. M.
Hitt, H. E.	Maulden, S. P.	Ray, S. C.	Thomas, C. H.
Hurley, D. T.	Mears, C. G.	Reamy, H. J.	Thomason, B. W.
Hutchins, C. T.	Moore, G. H.	Reed, H.	Thompson, P.
Dutton, L. V. S.	Moore, E.	Reed, J. L.	Tinnin, J. V.
Ingram, B.	Moore, R. A.	Rose, T. D.	Thornton, F. R.
Ivey, J. A.	Morris, B. E.	Riser, J. S.	Traylor, J. V.
Jasper, R. F.	Morris, J. R.	Rouse, I. E.	Trueblood, E. J.
Johnson, E. A.	Mosier, J. P.	Sanders, A. N.	Turner, R. H.
Johnson, E. B.	Mosier, L. B.	Sanders, W. H.	West, W. F.
King, G. T.	Mullins, E. L.	Saunders, J. G.	White, P. E.
Kinnett, A. D.	Murray, J. G.	Seantland, W. S.	Williams, W. W.
Kitching, A. A.	Neil, J.	Seiferd, J. E.	Willingham, E. B.
Knight, J. R.	Neilson, J. A.	Shaw, Z.	Wilson, L. P.
Lamereux, C. O.	Nicholas, H. L.	Simms, R. W.	Wood, A. B.
Landrum, D. A.	Norman, McK.	Smith, B. B.	Wood, J. G.
Larson, R. H.	Northrup, M. E.	Smith, G. C.	Woodward, F. T.
Latimer, T. J.	Norwood, H. R.	Smith, J. M.	Yachini, C.
Ledbetter, J. E.	Pardue, T. F.	Smith, W. M.	Younce, C.
Ledbetter, V. K.	Patterson, I. N.	Sprague, S.	<i>Post Graduates—</i>
Link, H. H.	Pollard, W. A.	Stone, C. C.	Hester, H. I.
Logan, A. J.	Poorman, J. W.	Stone, F. D.	Ricks, C. T.
Lopez, J. F.	Price, W. F.	Stone, J. L.	Yates, K. M.





OLD TESTAMENT CLASS—WOMEN

- | | | |
|-------------------------|-----------------------|-----------------------|
| Ammons, Miss Stella | Ellis, Miss Eva | Lyon, Miss Ruth |
| Anderson, Miss Essie | Elliott, Miss Mildred | McBrayer, Miss Nan |
| Autrey, Miss Ruth | Fletcher, Miss Louise | McGraw, Miss Annie |
| Acree, Miss Bessie | Fox, Miss Carrie | McIlroy, Miss Mary |
| Barratt, Miss Flora | Fulghum, Miss L. W. | Michael, Miss Lillian |
| Belchamber, Miss Bess | Godwin, Miss Julia | Mitchell, Miss Irene |
| Blalock, Miss Vera | Greene, Miss Lois | Moon, Miss Myrtle |
| Bradley, Miss Lella | Guillebeau, Miss Eva | Mudd, Miss Beulah |
| Broadway, Miss Alice | Harris, Miss Eunice | Melton, Miss Orma |
| Burney, Miss Caroline. | Harris, Miss Helen | Medlock, Miss Betty |
| Burton, Miss Jessie | Hoar, Miss Mildred | Osborn, Miss Mary |
| Calloway, Miss Mirvin | Holloway, Miss Pearl | Owen, Miss Bessie |
| Cannon, Miss Cora Lee | Hunt, Miss Hazel | Peacock, Miss Dena |
| Caress, Miss Mildred | Hunt, Miss Mary | Phillips, Miss Mary |
| Chase, Miss Constance | Kendall, Miss Rachel | Powell, Miss Clara |
| Cosby, Miss Lucie | Kersey, Miss Eunice | Pierce, Miss Ella |
| Crutchfield, Miss Annie | Knott, Miss Bettye | Priest, Miss Madaline |
| Dalton, Miss Lenora | Lane, Miss Virginia | Prothro, Miss Ailee |
| Durant, Miss Agnes | Lawrence, Miss Nell | Putney, Miss Nell |



OLD TESTAMENT CLASS—WOMEN—Continued.

Quarles, Miss Evelyn
Quillin, Miss Ruby
Reynolds, Miss Mae
Reynolds, Miss Thelma
Robbins, Miss Flossie
Roberts, Miss Gussie
Rose, Miss Effie
Sharp, Miss Margaret
Sigmon, Miss Nannie
Smith, Miss Essie
Snyder, Miss Bertha

Stockton, Miss Alice
Stump, Miss Lillian
Stenger, Miss Maie
Taylor, Miss Pearl
Todd, Miss Ethel
Todd, Miss Nannie
Tomlinson, Miss Mary
Vail, Miss Ruth
Vinson, Miss Ursula
Wagoner, Miss Viola
Walne, Miss Florence

Watson, Miss Alluwee
Wells, Miss Grace
Wharton, Miss Esther
Wharton, Miss Harriet
Woolley, Miss Willie
Wright, Miss Floy
Yao, Miss Lucy
Yates, Miss Gaynelle
Yeargen, Miss Lucile

Married Ladies

Andrews, Mrs. V. L.
Brame, Mrs. P. E.
Caverlee, Mrs. R. F.
Childress, Mrs. R. N.
Colston, Mrs. J. F.
Cochran, Mrs. F.
Crain, Mrs. E. B.
Cutts, Mrs. A. S.
Conley, Mrs. H. C.
Daniels, Mrs. W. S.
Duggar, Mrs. A. C.
Eure, Mrs. O. A.
Falls, Mrs. M. O.
Gaines, Mrs. L. S.
Germany, Mrs. K. R.
Harrison, Mrs. J. B.
Hicks, Mrs. P. A.
Hill, Mrs. D. E.

Hitt, Mrs. E. E.
Hudson, Mrs. S. F.
Huling, Mrs. F. G.
Latimer, Mrs. T. J.
Maer, Mrs. W. Q.
Marler, Mrs. H. L.
Mears, Mrs. C. G.
Morris, Mrs. B. E.
Morris, Mrs. H. O.
Norman, Mrs. McK.
Pickens, Mrs. J. D.
Pollard, Mrs. W. A.
Price, Mrs. J. L.
Pottorf, Mrs. E. C.
Reed, Mrs. W. H.
Russell, Mrs. R. T.
Smith, Mrs. G. C.
Seigler, Mrs. O. M.

Smith, Mrs. A. M.
Sprague, Mrs. S.
Stewart, Mrs. E. R.
Stone, Mrs. F. D.
Stone, Mrs. J. L.
Smith, Mrs. W. M.
Swenson, Mrs. A.
Taylor, Mrs. W. C.
Teresi, Mrs. J. M.
Tolbert, Mrs. F. M.
Taylor, Mrs. S. A.
Webb, Mrs. P. F.
West, Mrs. W. F.
Willett, Mrs. D. H.
Williams, Mrs. J. Q.
Young, Mrs. L. V.



NEW TESTAMENT CLASS—MEN

- | | | |
|-----------------|-------------------|-----------------|
| Aldinger, C. | Burchfield, J. W. | Daniels, W. S. |
| Appleby, D. P. | Brougher, R. M. | Danner, W. H. |
| Allen, T. C. | Burke, K. E. | Davis, G. W. |
| Atchley, C. N. | Burns, H. S. | Deane, F. W. |
| Bailey, L. E. | Burns, H. D. | Deemer, J. H. |
| Bain, S. C. | Carroll, L. | Deems, M. M. |
| Baldwin, G. B. | Caverlee, R. F. | Dillard, W. H. |
| Barbe, J. G. | Chastain, O. J. | Dosker, G. B. |
| Barker, A. F. | Childress, R. N. | Driskell, H. L. |
| Barker, E. E. | Clarke, R. G. | Dryden, J. G. |
| Bates, W. C. | Clegg, E. A. | Durham, C. |
| Breland, C. L. | Cline, R. M. | Earp, G. J. |
| Beam, J. P. | Colston, J. F. | Edwards, J. M. |
| Bell, J. T. | Cundiff, R. B. | Ellers, G. W. |
| Beamer, M. F. | Conley, H. | Everett, J. R. |
| Blaylock, A. P. | Cundiff, B. | Farmer, G. |
| Bowling, B. F. | Connely, R. E. | Ford, J. L. |
| Brame, P. E. | Crain, E. B. | Foster, C. H. |
| Blake, P. J. | Curl, W. H. | Fries, H. C. |
| Brown, J. M. | Crafton, L. G. | Fox, L. H. |
| Bruce, H. D. | Cunagin, W. | Franklin, B. E. |



NEW TESTAMENT CLASS—MEN—Continued.

- | | | |
|------------------|------------------|-------------------|
| Fuqua, J. F. | Logan, A. J. | Scantland, W. S. |
| Gaines, L. S. | Lopez, J. F. | Shaw, Z. |
| Gardner, V. M. | Loving, W. R. | Siferd, J. E. |
| Gebelt, A. F. | Maer, W. Q. | Simms, R. W. |
| Gilbert, G. S. | Matheson, J. D. | Smith, B. B. |
| Gould, J. J. | Marler, H. L. | Smith, G. C. |
| Gravitte, O. C. | Martin, J. W. | Smith, J. M. |
| Green, G. | Masden, M. H. | Smith, W. M. |
| Greenaway, W. L. | Mauldin, S. P. | Sprague, S. |
| Gregory, W. H. | McGavock, J. W. | Stone, C. C. |
| Hacker, S. S. | Mears, C. G. | Stone, F. D. |
| Hall, D. H. J. | Moore, E. | Stone, J. L. |
| Hall, H. P. M. | Moore, G. H. | Swann, P. P. |
| Hardy, W. E. | Moore, R. A. | Swenson, A. |
| Harrison, F. H. | Morris, B. E. | Tate, L. R. |
| Harrison, J. B. | Morris, J. R. | Tate, W. T. |
| Harrison, W. C. | Mosier, J. P. | Teague, N. C. |
| Henderson, R. | Mosier, L. B. | Teresi, J. M. |
| Herring, R. A. | Mullins, E. L. | Thomas, C. H. |
| Hibbs, W. W. | Murray, J. G. | Thomason, B. W. |
| Hicks, P. A. | Neil, J. | Thompson, P. |
| Hillard, B. H. | Neilson, J. A. | Thornton, F. R. |
| Hipps, F. L. | Nicholas, H. L. | Traylor, J. V. A. |
| Hitt, H. E. | Norman, M. | Trueblood, E. J. |
| Hurley, D. T. | Northrup, M. E. | Turner, R. H. |
| Hutchins, C. T. | Norwood, H. R. | West, W. F. |
| Hutton, L. V. S. | Pardue, T. F. | Watts, T. J. |
| Ingram, B. | Patterson, I. N. | White, P. E. |
| Ivey, J. A. | Pollard, W. A. | Williams, W. W. |
| Jasper, R. F. | Price, W. F. | Willingham, E. B. |
| Johnson, E. A. | Poorman, J. W. | Wilson, L. P. |
| Johnson, E. B. | Pottorf, E. C. | Wood, J. G. |
| Kinnett, A. D. | Prewitt, C. | Wood, A. B. |
| King, G. T. | Price, J. L. | Woodward, F. T. |
| King, J. R. | Randolph, J. R. | Yachini, C. |
| Kitching, A. A. | Ray, S. C. | Younce, W. C. |
| Kirby, C. L. | Reamy, H. J. | |
| Lamereux, C. O. | Reed, H. | |
| Landrum, D. A. | Reed, J. L. | |
| Larson, R. H. | Ridenour, G. L. | |
| Latimer, T. J. | Riser, J. S. | |
| Ledbetter, J. E. | Robinson, O. L. | |
| Ledbetter, V. K. | Rouse, G. E. | |
| Link, H. H. | Roberts, J. W. | |
| Logan, R. M. | Sanders, W. H. | |
| | Saunders, J. G. | |

Men Post Graduate—

- Fuller, E. A.
 Gibson, T. B.
 Leavell, L. O.
 Olander, C. J.
 Pearson, F. B.
 Stewart, E. R.



NEW TESTAMENT CLASS—WOMEN

Acree, Miss Bessie
 Anderson, Miss Essie
 Ammons, Miss Stella
 Autrey, Miss Ruth
 Barratt, Miss Flora
 Belchamber, Miss Bess
 Blalock, Miss Vera
 Bradley, Miss Lella
 Broadway, Miss Alice
 Burney, Miss Caroline
 Burton, Miss Jessie
 Calloway, Miss Mirvin
 Cannon, Miss Cora
 Chase, Miss Constance
 Crosby, Miss Lucile
 Crawford, Miss Mary
 Crutchfield, Miss Annie
 Dalton, Miss Lenora
 Durant, Miss Agnes
 Dye, Miss Jessie
 Ellis, Miss Eva

Elliott, Miss Mildred
 Fletcher, Miss Louise
 Gayle, Miss Sarah
 Fox, Miss Carrie
 Fulghum, Miss Lillian
 Godwin, Miss J. L.
 Green, Miss Lois
 Guillebeau, Miss Eva
 Harris, Miss Eunice
 Harris, Miss Helen
 Holloway, Miss Pearl
 Hunt, Miss Mary
 Hunt, Miss Hazel
 Jasper, Miss Mary
 Kendall, Miss Rachel
 Kersey, Miss Eunice
 Knott, Miss Bettie
 Lane, Miss Virginia
 Lawrence, Miss Nell
 Lyon, Miss Ruth
 Medlock, Miss Betty

Michael, Miss Lillian
 Melton, Miss Orma
 Mitchell, Miss Irene
 McIlroy, Miss Mary
 Moon, Miss Myrtle
 Mudd, Miss Beulah
 McBroyer, Miss Nan
 McGraw, Miss Annie
 Osborn, Miss Mary
 Owen, Miss Bessie
 Peacock, Miss Dena
 Philips, Miss Mary
 Pierce, Miss Ella
 Powell, Miss Clara
 Price, Miss Madeline
 Prothro, Miss Ailee
 Putney, Miss Nell
 Quillen, Miss Ruby
 Quarles, Miss Evelyn
 Reynolds, Miss Mae
 Reynolds, Miss Thelma



NEW TESTAMENT CLASS—WOMEN—Continued.

Robbins, Miss Flossie
Roberts, Miss Gussie
Rogers, Miss Rebecca
Rose, Miss Effie
Sharp, Miss Margaret
Sigman, Miss Nannie
Smith, Miss Essie
Snyder, Miss Bertha
Stockton, Miss Alice

Stenger, Miss Mae
Stump, Miss Lillian
Taylor, Miss Pearl
Tomlinson, Miss Mary
Todd, Miss Ethel
Todd, Miss Nannie
Vail, Miss Ruth
Verdery, Miss Edna
Vinson, Miss Ursula

Wagoner, Miss Viola
Walne, Miss Florence
Watson, Miss Alluwell
Wells, Miss Grace
Wharton, Miss Esther
Wharton, Miss Harriett
Wooley, Willie
Yates, Miss Gaynelle
Yao, Miss Lucy
Yeargen, Miss Lucile

Married Ladies

Andrews, Mrs. L. V.
Barbe, Mrs. J. G.
Brame, Mrs. P. E.
Childress, Mrs. R. N.
Cochran, Mrs. F.
Canipe, Mrs. G. C.
Colston, Mrs. J. F.
Conley, Mrs. H. C.
Crain, Mrs. E. B.
Crull, Mrs. N.
Cutts, Mrs. A. S.
Daniels, Mrs. W. S.
Duggar, Mrs. A. C.
Ergle, Mrs. H. H.
Gaines, Mrs. L. S.
Germany, Mrs. K. R.
Green, Mrs. G.
Hayden, Mrs. W. E.
Harrison, Mrs. J. B.
Hicks, Mrs. P. A.
Hill, Mrs. D. E.

Hodgens, Mrs. H. M.
Hudson, Mrs. S. F.
Huling, Mrs. F. G.
Jasper, Mrs. R. F.
Maer, Mrs. W. Q.
Marler, Mrs. H. L.
McGinty, Mrs. H. H.
Mears, Mrs. C. G.
Morris, Mrs. B. E.
Morris, Mrs. H. O.
Mullins, Mrs. E. L.
Neil, Mrs. Jim
Norman, Mrs. M.
Poorman, Mrs. J. W.
Pollard, Mrs. W. A.
Pattorf, Mrs. C. E.
Price, Mrs. J. L.
Price, Mrs. J. F.
Reed, Mrs. W. H.
Russell, Mrs. R. T.
Smith, Mrs. G. C.

Smith, Mrs. W. M.
Smith, Mrs. A. M.
Sprague, Mrs. Solie
Stewart, Mrs. E. R.
Stone, Mrs. F. D.
Stone, Mrs. J. L.
Swenson, Mrs. A.
Turner, Mrs. R.
Tate, Mrs. W. T.
Taylor, Mrs. W. C.
Teresi, Mrs. J. M.
Thomas, Mrs. C. H.
Trainham, Mrs. W. E.
Tully, Mrs. H. L.
Willett, Mrs. D. H.
West, Mrs. W. F.
Webb, Mrs. P. F.
Withers, Mrs. A. B.
Williams, Mrs. W. W.
Young, Mrs. L. V.



H.J. DAVIS
CARTOONIST

W.H. BARTON
EDITOR-IN-CHIEF

**KHPYE
STAFF**
- 1922 -

BOARD OF EDITORS
HERBERT MOULE G.T. TERRELL

T. L. SASSER

C. W. BRANCH

D. R. BOLIN

H.W. TRIBBLE
BUSINESS MANAGER

J. MCKEE ADAMS
FACULTY EDITOR

**KHPYE
STAFF**
- 1922 -

BOARD of MANAGERS

S.V. McCASLAND

R.N. OWEN

T. B. STOVER

R. F. CAVERLEE

W. R. COLE

R. B. PATTERSON

PAUL WHEELER

E. M. BOSTICK
CHAIRMAN - 1st, 2nd, 3rd QUARTERS

STUDENT
EXECUTIVE
COUNCIL

1921-1922

F. C. FEEZOR

O. F. MERRING

L. M. ROBERTS

R. N. OWEN
CHAIRMAN 4th QUARTER

O. G. TILLMAN



EX-SERVICE MEN

Appleby, D. P.
 Atehley, C. N.
 Barton, W. H.
 Benedict, L. W.
 Berkstresser, J. E.
 Binns, W. P.
 Bolin, D. R.
 Bruce, H. D.
 Cate, A. E.
 Cline, R. M.
 Cole, W. R.
 Conley, Herbert
 Criminger, F. O.
 Darter, J. E.
 Davis, H. J.
 Deemer, J. H.
 Deems, M. M.
 Gibson, T. B.
 Hall, D. H.
 Hardy, W. E.
 Harrison, F. H.
 Hibbs, W. W.
 Hickerson, C. V.

Hippy, F. L.
 Ivey, J. A.
 Jackson, C. B.
 Johnson, R. I.
 Jones, J. P.
 Kelly, R. A.
 Kinnett, A. D.
 Leavell, L. O.
 Larson, R. H.
 Leazer, R. W.
 Link, H. H.
 Littlejohn, J. T., Jr.
 McCulloch, R. R.
 McKinnon, R. H.
 Martin, J. W.
 Miller, C. C.
 Minks, O. L.
 Moffitt, J. W.
 Moore, R. A.
 Neilson, J. A.
 Nichols, Hugh N.
 Owen, R. N.
 Patterson, I. N.

Pearson, F. B.
 Pittard, C. R.
 Raines, W. C.
 Reamy, H. J.
 Renegar, G. D.
 Ridenour, G. L.
 Riser, J. S., Jr.
 Saunders, J. G.
 Slaughter, J. L.
 Sloan, W. A.
 Starbird, G. M.
 Stone, C. C.
 Swenson, Albert
 Terrell, G. T.
 Thornton, F. R.
 Tinnin, J. V.
 Tribble, H. W.
 White, P. E.
 Williams, H. G.
 Williams, J. H.
 Willingham, E. B.
 Withers, A. B.
 Younce, W. C.



VOLUNTEER BAND

W. W. ENETE, President.

FIRST TERM—

E. M. HARRISON
RUSH LOVING
N. C. TEAGUE

SECOND TERM—

V. K. LEDBETTER *Vice-President.*
G. H. MOORE *Secretary-Treasurer.*
N. C. TEAGUE *Editor.*

MEMBERS

Andrisan, Pantelimon
Appleby, B. P.
Beam, J. P.
Bostick, E. M.
*Branch, C. W.
Blackman, Mr. and Mrs. L. E.
Conely, Robt. E.
*Cunningham, Collis
Enete, W. W.
Ergle, H. H.
Guthrie
*Hall, H. P. Matory
Harrison, E. M.
*Hester, Mr. and Mrs. H. I.
Hudson, E. Valentine
Lopez, J. F.
Loving, Rush
*Littlejohn, Mr. and Mrs. J. T.
Lawton, S. M.
Link, H. H.

Ledbetter, V. K.
*Moye, Mr. and Mrs. J. L.
Miller, C. C.
Moffitt, J. W.
Moore, G. A.
Moore, R. A.
*Nakagawa, Tsunehiro
Overstreet, Sam
*Pearson, Fred B.
*Parker, E.
Patterson, I. N.
Reed, M. D.
*Stover, T. B.
*Sloan, W. A.
Tillman, O. G.
Teague, N. C.
Vince, P. S.
Young, Mr. and Mrs. O. L. V.
*Watts, Mr. and Mrs. J. W.

*Indicates that these Volunteers expect to sail soon.



MASONIC GROUP

- | | | |
|---------------------|------------------------|------------------|
| Allen, T. C. | Hester, H. I. | Seat, W. R. |
| Barbee, J. G. | Hill, Sam | Sisk, W. K. |
| Bates, W. C. | Jackson, L. C. | Slaughter, J. L. |
| Beasley, T. W. | Jones, J. P. | Smith, A. M. |
| Berkstresser, J. E. | Jenkins, W. B. | Smith, B. B. |
| Benedict, L. W. | Kitchings, A. A. | Smith, T. E. |
| Burns, H. S. | Kinnett, A. D. | Taylor, S. A. |
| Cate, A. E. | Larson, R. H. | Teague, L. W. |
| Cole, W. R. | Littlejohn, J. T., Jr. | Terrell, G. T. |
| Colston, J. F. | McGavock, J. W. | Thompson, Paul |
| Crafton, Louis | Minks, O. L. | Thornton, F. R. |
| Crane, E. B. | Morris, H. O. | Tillman, O. G. |
| Criminger, F. O. | Moye, J. L. | Tribble, H. W. |
| Croxton, T. W. | Parker, N. H. | Tully, H. L. |
| Dietz, O. O. | Pickens, J. D. | Underwood, J. L. |
| Driskell, H. L. | Powell, Dr. F. M. | White, P. E. |
| Dockery, L. W. | Prewitt, C. P. | Williams, H. G. |
| Enete, W. W. | Randolph, J. R. | Wilson, I. L. |
| Feezor, F. C. | Richardson, J. C. | Wood, S. C. |
| Gardner, V. M. | Ray, S. C. | Young, L. V. |



WOMAN'S MISSIONARY SOCIETY

- | | | | |
|-------------------|-----------------|------------------|-----------------------|
| MESDAMES: | Crain, E. B. | Gaines, L. S. | Jenkins, E. L. |
| Andrews, V. L. | Croxton, T. W. | Gillett, S. A. | Jenkins, W. B. |
| Burke, J. Y. | Crull, Nelson | Glosson, S. C. | Johnston, E. B. |
| Bealle, T. B. | Cutts, Allen S. | Green, Guard | Kirby, M. |
| Benedict, L. W. | Caverlee, R. T. | Greenaway, W. L. | Kimbrough, B. L. |
| Blackman, L. E. | Dietz, O. O. | Gregory, W. H. | King, G. L. |
| Barker, E. E. | Daniels, W. S. | Haines, M. E. | Kirkland, L. P. |
| Beamer, M. F. | Dasher, G. B. | Harrell, B. H. | Logan, R. M. |
| Brame, P. E. | Davis, H. J. | Harrison, T. B. | Latimer, L. J. |
| Brickhouse, R. E. | Deemer, J. H. | Hayden, W. E. | Littlejohn, J. L. |
| Brougher, R. M. | Driskell, H. L. | Hester, H. I. | Lloyd, D. B. |
| Burns, H. S. | Duggar, A. C. | Hicks, P. E. | Maer, W. O. |
| Bush, B. H. | Dupree, E. | Hill, D. E. | Marler, H. L. |
| Canipe, J. C. | Duncan, B. H. | Hoar, Waldo | McConnell, F. C., Jr. |
| Carpenter, J. W. | Edwards, J. M. | Hodgins, H. M. | McGavock, J. W. |
| Carson, R. G. | Ergle, H. H. | Hudson, S. F. | McGinty, H. H. |
| Cauble, W. H. | Eure, O. A. | Huling, F. G. | Mears, C. J. |
| Childress, R. T. | Falk, M. O. | Hitt, H. E. | Miller, C. C. |
| Cochran, Frank | Ford, J. L. | Hottell, T. M. | Mitchell, J. F. |
| Colston, J. F. | Francis, H. J. | Jones, B. E. | Moffatt, J. W. |
| Cooper, M. A. | Fuqua, J. F. | Jasper, R. F. | Morris, B. E. |



MR. AND MRS. JAMES G. VICK
Superintendent and Matron of New York Hall.

WOMAN'S MISSIONARY SOCIETY—Continued.

MESDAMES :			
Morris, H. O.	Randolph, R. L.	Stulek, A.	Williams, J. O.
Morrow, Clarence	Reed, M. D.	Swenson, Albert	West, M. F.
Moye, J. L.	Reed, W. H.	Tate, William	Walker, F. E.
Mullins, E. L.	Roberts, J. W.	Taylor, Carson	Watrous, C. R.
Norman, McKinley	Russell, R. T.	Taylor, S. A.	Walters, T. E.
Nicholas, Henry L.	Smith, W. M.	Teresi, J. M.	Webb, P. F.
Naylor, C. M.	Sanders, W. H.	Thomas, C. C.	Welch, C. W.
Neil, Jim	Seigler, O. M.	Thomas, C. H.	Wheeler, Paul
Price, J. L.	Seiferd, J. E.	Tiffany, H. W.	White, R. K.
Patterson, R. B.	Shaw, Zell	Timbrooke, G. R.	Willett, D. H.
Pickens, J. D.	Simpson, L. K.	Talbert, F. M.	Wilson, L. P.
Pitt, J. C.	Sisk, W. K.	Tooke, C. C.	Withers, A. B.
Poorman, J. W.	Smith, A. M.	Trainham, W. E.	Walden, W. E.
Pottorf, E. C.	Smith, T. E.	Tully, Hugh	Young, Leon V.
Price, J. F.	Stewart, E. R.	Vecch, C. L.	Zbinden, A. N.
Pollard, W. O.	Stone, F. D.	Vinson, H. P.	
	Stone, J. L.	Williams, J. H.	



NEW YORK HALL WAITERS



NEW YORK HALL OFFICE FORCE

Athletics

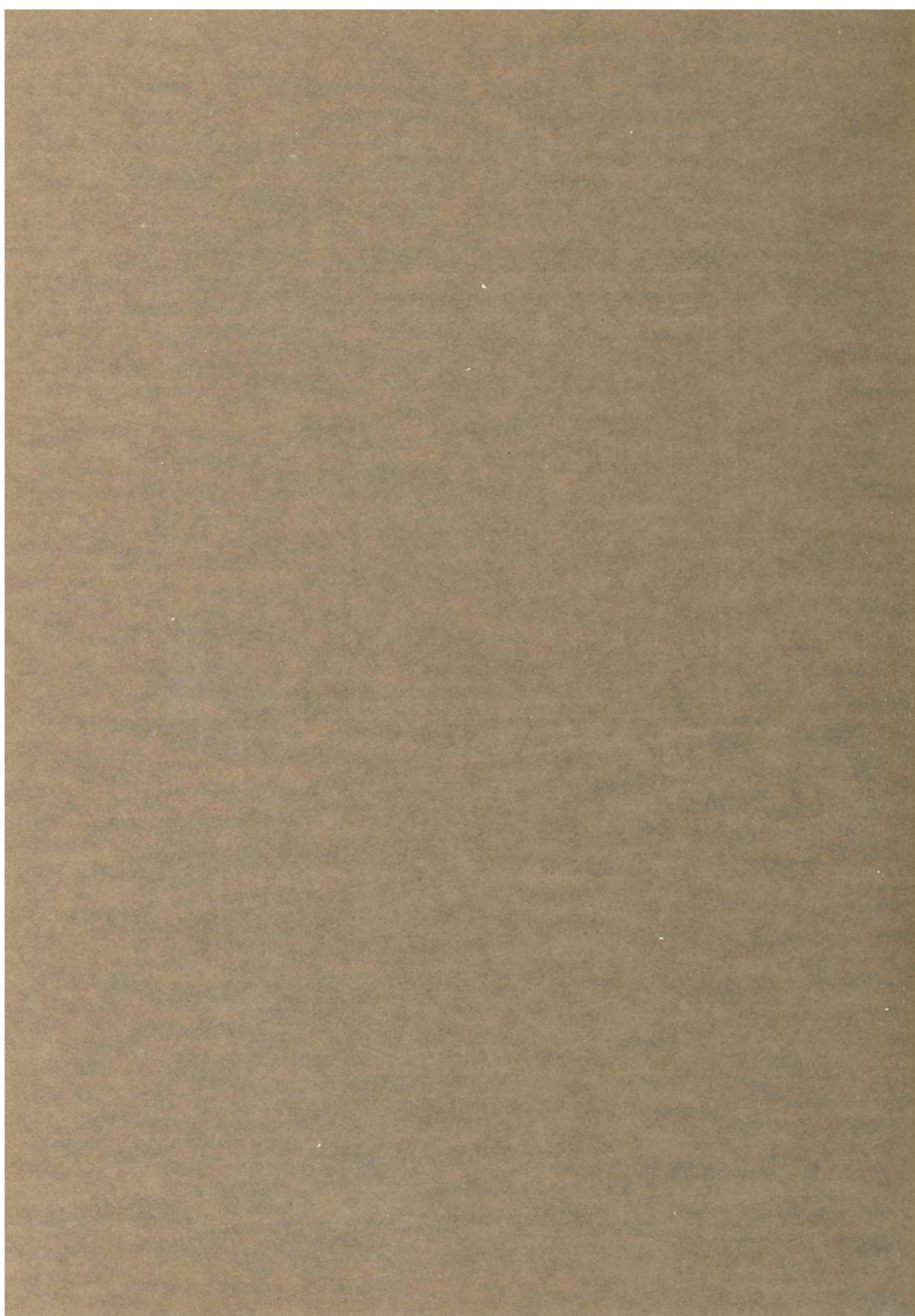


Winter Scene

Cherokee Park

Louisville, Ky.

Book Five







The Athletic Association

President.....	H. W. TRIBBLE
Secretary-Treasurer.....	S. C. OWEN
Manager of Handball.....	J. M. SMITH
Manager of Tennis.....	W. W. ENETE
Manager of Basketball.....	W. C. RAINES

During the last three years, the Athletic Association of the Seminary has shown some signs of real growth. The number of activities engaged in by the students has been increased, and a strong effort has been made to provide the equipment needed for the various games.

The year was started off with a lively tennis tournament. The courts were in good condition, the weather was fine, and splendid interest was manifested from the first game. There was little doubt as to who would win out in the doubles, for Yates and Duggar entered as partners, and the only speculation as to the winner of the singles was between these two. They make an excellent team, playing a fast and accurate game. Special mention should also be made of the playing of Criminger, W. W. Adams and Teague.

During the winter months, handball and basketball held sway. Soon after Christmas a handball tournament was started, which continued through the season. While Gibson and Fuller proved themselves champions in the doubles through the merit of their team work and accuracy of playing, there are many others who easily rank in the A-1 class.

A schedule of basketball match games is usually arranged at the opening of the season. Last year, we won the title in the Y. M. C. A. Friday Night League, and made a splendid showing against the strongest teams in the Falls Cities, defeating the University of Louisville in a very interesting game. However, as we were unable this year to secure a suitable gymnasium for playing regular games, we were unable to arrange a schedule. We played only one game, losing by the small margin of five points. Feezor and Yates are our leading players, the latter being rated as the best forward among all the teams of the three Falls Cities.

Many of the students are enthusiastic golf players, taking advantage of free access to the splendid links in Cherokee Park. Many make use of the provisions in the Y. M. C. A. for volleyball, swimming, wrestling, and the 5:20 class in calisthenics. In addition to all these, the Association has furnished the material for baseball, which, due to the very small space within which we must play, is indoor baseball played on an outdoor court.

The Athletic Association has sought to supervise in all branches of athletic activities, and to incite the kind of interest that produces permanent growth. In some instances we have failed, while in many others a fair amount of success has been gained. It has been a good year. The years to come will be better.

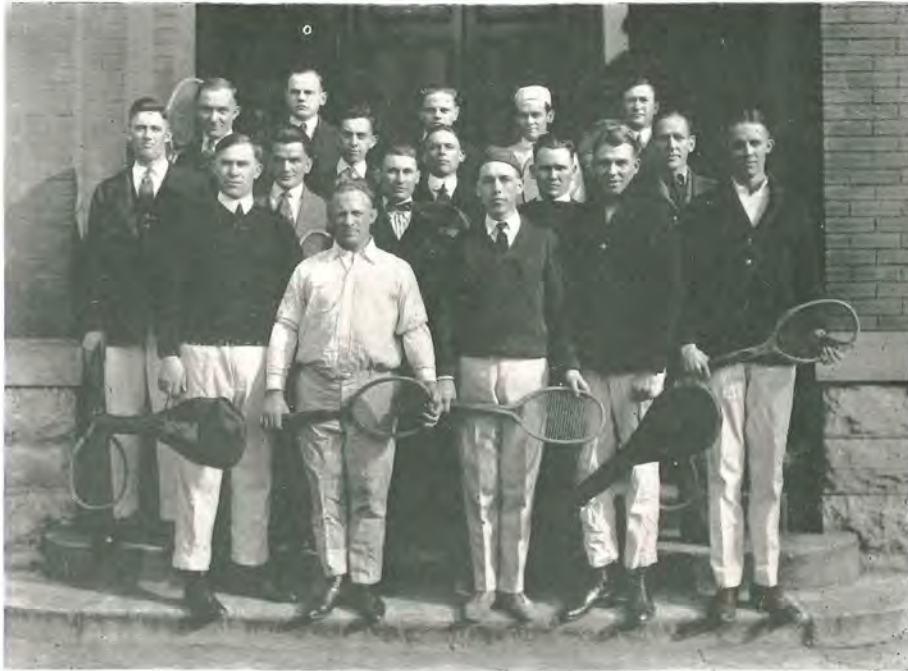


THE BASKETBALL TEAM

Captain F. C. FEEZOR
 Manager W. C. RAINES
 Coach F. O. CRIMINGER

K. M. YATES Forward. Fifth year.
 J. L. SLAUGHTER Forward. Second year.
 F. C. FEEZOR Center. Second year.
 O. F. HERRING Guard. Third year.
 F. T. WOODWARD Guard. First year.
 H. W. TRIBBLE Guard. Third year.

E. PARKER	L. V. S. HUTTON
A. N. SANDERS	R. B. PATERSON
J. A. IVEY	P. P. SWANN
N. C. TEAGUE	H. H. ERGLE
S. C. OWEN	I. E. ROUSE
W. W. HIBBS	J. C. RICHARDSON
A. A. KITCHINGS	C. DURHAM



THE FALL TENNIS TOURNAMENT

Committee—Kyle M. Yates, F. O. Criminger, E. M. Harrison, R. N. Owen, T. B. Gibson.

Winners—Singles: A. C. Duggar, Roe-O'Connor-Gordon Cup; Runner-up, K. M. Yates, Sutcliffe Co., Racket.

Doubles: Duggar and Yates, Spaulding Co. Trophy, Shoes; Runners-up, Tribble and Criminger, Baptist World Co., Testaments.

ENTRANCES

F. C. FREEZOR	BEN. INGRAM
F. W. WALKER	J. L. LOVE
L. W. DOCKERY	I. N. PATTERSON
F. H. HARRISON	J. A. IVEY
R. A. KELLY	R. E. CONNELLY
E. M. HARRISON	A. C. MAGEE
KYLE M. YATES	A. C. DUGGAR
F. O. CRIMINGER	W. W. ENETE
HERBERT MOULE	H. W. TRIBBLE
C. F. HUTCHINS	W. W. ADAMS
M. M. DEEMS	L. M. POLHILI
PAUL THOMPSON	



HAND-BALL TOURNAMENT



DOUBLES—

FULLER-GIBSON, Winners
 LEAVELL-K. WHITE, Runners-up
 SMITH-ADAMS
 KELLY-HICKERSON
 HALL-CRIMINGER
 HILL-HARRISON
 NICHOLS-McCASLAND
 LANE-HITE

SINGLES—

ADAMS, Winner
 FULLER, Runner-up
 GIBSON
 K. WHITE
 HALL
 KELLY
 HICKERSON
 CRIMINGER





The only smiles that are worth the smiling are those that make one brave—
 Where the conflict raged, the soldier smiled his faltering nerve to save.
 And, aye, 'tis a fearful conflict, Lord, thy servants here are in;
 'Tis the smiling face we ask that we may better fight with sin.
 With a smiling face and a prayerful heart we'd storm the very door
 Where, clothed in bogus dignity, have ruled since days of yore
 Traditions old and useless that would render void God's Word.
 And smiles do fade at our solemn task, and we ask Thy blessing, Lord;
 And forbid, O Lord, that our eagerness should carry the fight too far—
 Or that we mistake the real for the false; for God, 'tis a holy war.
 We wage it, Lord, 'gainst old deceit, and old earth-honored shame;
 Yet, Lord, there are fanes where we tearfully smile and whisper low thy name.
 Help us laugh at much that men have feared, till, like some poor scare-crow
 Laid down by the gale of laughter, Lord, old Error shall lie low.
 And when our mundane tasks are done, and there are no more jobs to do,
 We hope to laugh at Death and say, "Hello, old bugaboo!
 You gave us a fright when eternal night could help you put it thru.
 Now strong in the loving light of God, we can even smile at you!
 A spirit of darkness you must fade in the new life's dawning light."
 Then we pause in raptured awe; for, lo, from the throne stream glories bright.
 And then the fight and the laughter's o'er, and the tears, and we sink to rest
 With a smile as sweet as a little child's on the great, kind Father's breast.



Seminary Night-Mares

How they crawl, simply crawl, over me!
Where they come from is more than I can see.
 I'm tired and sleepy and so blue,
 No rest, no sleep, the whole night thru,
For they crawl, simply crawl, over me!

Off to bed with a dread every night;
How I roll, kick, and toss is a fright;
 I snore and dream in great despair
 While they play baseball in my hair,
As they crawl, wildly crawl, over me!

So one night when I turned on the light,
Not a one could be found in my sight;
 I thought I'd get some rest and sleep,
 But soon I felt them start to creep
Over me, madly crawl, over me!

How they crawl over me, scratch and bite,
Makes me feel a battalion I could fight.
 I'd "scrap" Jack Dempsey to a draw,
 Or even fight my mother-in-law,
For they crawl, crawl, crawl over me!

So today with a heart full of woe,
I decided these friends had to go.
 And so I used all kinds of oil,
 And sprayed and scrubbed till I thot I'd boil,
That they might nevermore crawl o'er me!

So tonight I lay down full of glee,
Feeling sure nothing else would bother me;
 But pretty soon I heard them fall
 From the ceiling and the wall,
And they still wildly crawl over me!

(E. M. H.)



Dr. Carver: Bro. Peoples, give me some of the theories mentioned in Revelation.

Bro. Peoples: I think I can give you one.

Dr. Carver: What is it?

Bro. Peoples: The candlestick theory.

* * * * *

Bro. Price: Doctor, I couldn't find that word coy (COY).

Bro. Popup: In the book of Moses.

Dr. Robertson: Which one?

Bro. Popup: Josephus.

* * * * *

Dr. Sampey: Where is the Garden of Eden located?

Miss Spry: In Heaven, I suppose.

* * * * *

Dr. Davis: Begin the translation at verse one.

Bro. Price: Doctor, I couldn't find that word coy (COY).

* * * * *

Dr. Davis: Bro. Russell, will you recite, please?

Bro. Russell: Doctor, I haven't bought a book yet.

Dr. Davis: You don't mean to tell me you haven't bought a book yet?

Bro. Russell (back tracking): I thought you were questioning on the new book.

LET ME SEC. YES, DOCTOR, I DISREMEMBER THAT OUTLINE BUT I CAN GIVE YOU SOME OTHER OUTLINES IF YOU WISH.



Dr. Mullins: Where does the lesson begin?

Class: Page 256, point c.

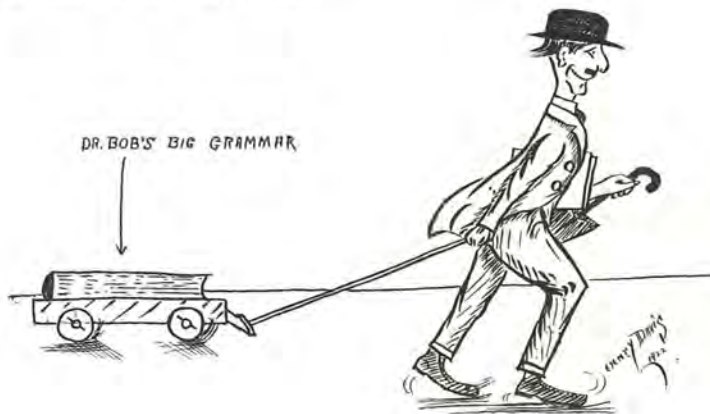
Dr. Mullins: Bro. Bone, give me point c.

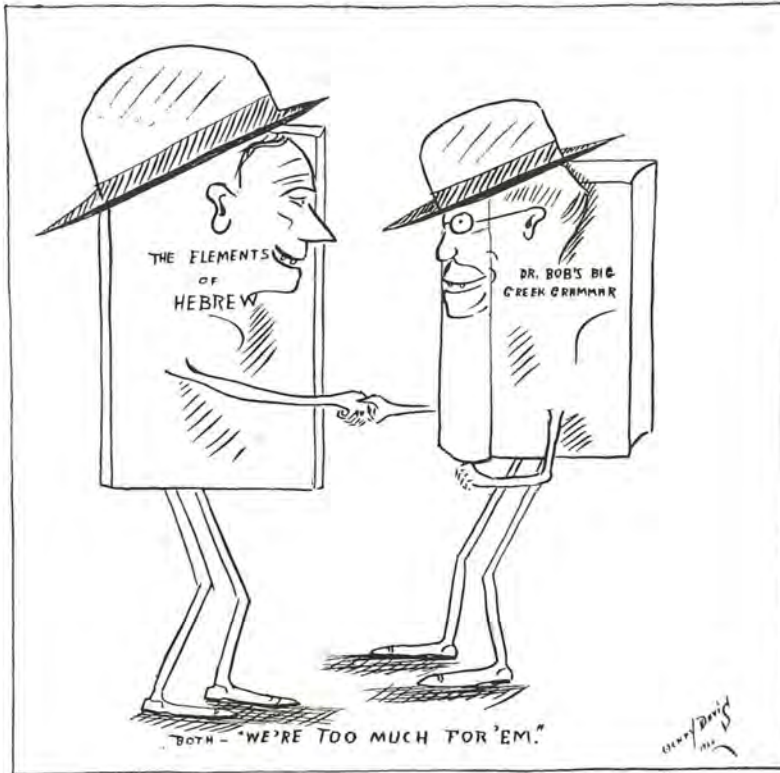
Bro. Bone: _____
* * * *

Dr. Bob: Did you bring your grammar with you this morning?

Bro. Bone: No, sir! My wagon broke down on the way.

REV. H. BONE RECITES IN SYST. THEOL.





WHEN TIGLATH READS THEM A LINE

Brethren, you will just have to get this Senior Hebrew. You are not in Junior now, but Senior. You will have to put away your shotgun and get your rifle. Get your rifle, for last year you bruised down the weeds and briars, so now we must clean the fence corners. You know what I mean when I say clean the fence corners. Yes, that is what Senior Hebrew is for, to make a clean slate. Now we know what we are doing and where we are, so get your head in the air and your tail over the dashboard and go down the road.



New York Hall Version of "Raven," 1922

(With Apology to Poe and the Raven, too.)

Once upon an evening dreary,
As I studied weak and weary,
Suddenly there came a tapping
As if someone were rapping,
Violently rapping at my door—
Bang, rap, tap, knock, nothing more!

And it's rip, rap, rap,
And it's tip, tap, tap—
Like an endless song
All the day long.

Then a voice I seemed to hear
That filled me with terror;
I was afraid almost to look
Into the darkness for a spook:
"Speak!" cried I in fear dismay—
The sprite replied, "Dollie Gray."

And it's "Dollie Gray," "Dollie Gray,"
All the time, night and day.
Is there nothing else to say?
Oh, send her away!

Wide open then I flung the shutter—
In came a Raven with a flutter,
Grim, ebony-hued like a ghost
From Night's Plutonian coast.
Said I, "Darned bird, quit croaking."
He answered "Quit looking, quit looking."

And it's "Quit looking, quit looking,"
Until it has ceased to be joking;
Conditions are getting to a fright,
Worse than seem' things at night.

Get thee back, bird, I implore;
Leave me alone; quit my door,
Evil prophet; let your noise cease;
Depart from me; leave sweet peace
So that I may have rest of soul—
Quoth the Raven "On the Whole."

And it's "On the whole, on the whole,"
Unceasing dull as a tale twice told;
What say you, New York Hall boys,
Shall we ban this needless noise?

KATY DID.

(Copyright applied for.)

WHEN A FELLER NEEDS A FRIEND.

When he goes out to preach with only two sermons, and he finds out that he has to preach on Saturday night, too.

When he is the first one to be called on in O. T. and N. T.

When you get called on during the fourth quarter, and you need 85 for exemption.

When there is a split in the church, and you have no invite for dinner.

When three exams come in one day.

When you have to borrow money to supply for a friend, and when you return, he says, thank you.

When you are called on to recite, and didn't get over the assignment, then comes, "I just got that far." He-Haw.



When you have in vain searched your brain for the correct answer, then follows, "I'm sorry, Brother."

When after pulling a "bone" you find that the entire household are not Baptists.

When you have made the right gesture, and the right word fails to follow it.

When you are reading Greek or Hebrew in class, and forgetting, put in too much a la King James.

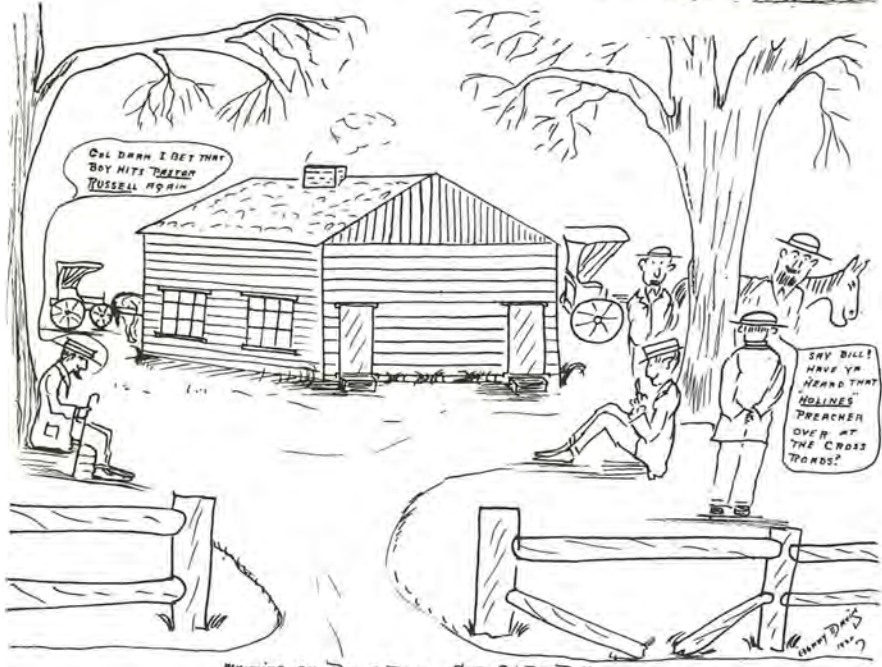
When a married man has Hebrew and Greek to get up, and plenty of "sheol" at home.

When you are expecting to get a degree, and get only 74.





ALBUCKENS MONDAY.
The old brocher who complimented your sermion too much Sunday.



WRITING ON TEE. A. BONE SAT. 2:30 P. M.



TEN COMMANDMENTS OF NEW YORK HALL

1. Thou shalt not sleep when the bed bugs begin to creep.
2. Thou shalt not breathe when Curtis begins to sweep.
3. Thou shalt not flirt at the Training School.
4. Thou shalt not go without a bath because you might be forced to obey the rule.
5. Thou shalt not back-bite lest ye back-slide.
6. Thou shalt not act like the faculty lest ye get full of pride.
7. Thou shalt not ask for credit at the office, because it is for your support, and not for your convenience.
8. Thou shalt not eat Sunday night supper, but take two crackers and put peanut butter between them.
9. Thou shalt not beat, bang, yell and sing.
10. Thou shalt not borrow books, dimes, stamps, collars, shirts, ties—then, at the close of school, take the train.



Dr. A. T. Robertson—
Seminaree.

Dear Dr. Robertson—

"On the whole"—I've thoroly enjoyed this class. "Rabbi-Smell-fungus" and the churches of "Possum Trot" and "Goose Creek" have become real to me. I realize that "they're true if they are." Well, I just thought I'd mention them. "Scuse me for saying so, but human nature's a very queer thing—some people have more of it than others. It's between them and the peach tree. I just thought I'd call attention to that, too.

"Scuse me for askin', but I'd like to know" what I'm going to make out of this examination? Anything that is wrong with my paper "would be that way, if it weren't t'other." However, I've "argufied and splanified" to the best of my ability—but you know "things are never right except when they are." So I'm just goin' to hand in my paper, and "pray over it."

Please remember, in lookin' it over that I'm not a skeptic, therefore, not a scholar!!!

And—Glory, hallelujah! Goodbye, I'm gone!
If I didn't write this, somebody did.



Crawfish Bill, and the Hebrew Language

Jim Sawyer had a bright school-boy, as bright as bright kin be;
Jim shore wuz proud o' that there boy, and Jim he sez, sez he:
"I shore must make that boy o' mine president of this nation."
But Jim's boy says, "Waal, I ain't got no political aspiration,
The biggest preacher in the land is what I'm goin' to be,
And so this fall I will pack my trunk and go to the seminaree.
And I'm a goin' to study till I'm an edjewcated preacher,
I won't be like old Brother Smith, a pulpit-bangin' screecher;
I'll talk of science in German, in French, I'll talk o' art,
Of opery in Italian smooth—and to complete my part,
The Greek shall show my wisdom of New Testament—then, too,
I'll just begin in Genesis and use the old Hebrew."

He went. Came home at Christmas. His hair wuz nice and slick;
His Hebrew went like my first chaw, when terbacker made me sick.
"Gimel, daleth, bereshith!" I sez to him, "Say, son,
That sounds like a sea-sick feller feeding fishes." 'Fore I'se done,
He wuz busy making letters. "This," he sez, "is letter 'Shin.'"
I lamped that sign he made a bit, and then I looked again.
I thought till then a feller's shin wuz his laig below his knee.
"Why that's a devil's pitchfork, son," I sez. He sez, sez he,
"If you had to learn the things I guess you'd think o' them that way,
And a little more so, too, old man." With that he turns away,
A-sayin' "Kittol, Kattol, Kattool." and I surmises that
The lad was grievin' out his heart 'bout a long lost Thomas Cat.

They say you read right back'ards in that bloomin' Hebrew stuff,
And keepin' his poor brain reversed shore served this feller rough.
One night he backed on a woman's train and ripped off part o' her gown;
He'd stomp reverse on his daddy's Ford and backed six miles to town.
One day he backed into a cop, worse'n a billy goat butts,
They took him around to the station, and decided he wuz nuts;
Then sent him out to the Bughouse fur the nuts and the insane,
They laid him out in a padded cell with ice-cakes on his brain.

I went to see the boy one day. 'Twuz sadder than the tomb.
He wuz down upon all-fours abackin' 'roun' the room.
The keeper says, "They ain't no harm in this poor nut a-tall,
He got a back-start in Hebrew, now he backs around the wall,
And thinks that he's a crawfish, for I've heard the way they write
The Hebrew is jest back'ards, that is to left from right."
And I shook my head and sadly said, "Preachers don't use home-brew,
But jest as fur as I can tell, He-brew worse jobs'll do."
And Jim's poor boy down on all-fours kept backin', backin' still,
The warden wiped his eye and sobbed, "We call 'im Crawfish Bill."
We turned around and left the room, the door wuz softly shet,
And I guess Jim's boy is down there still, a playin' crawfish yet.

* * * * *

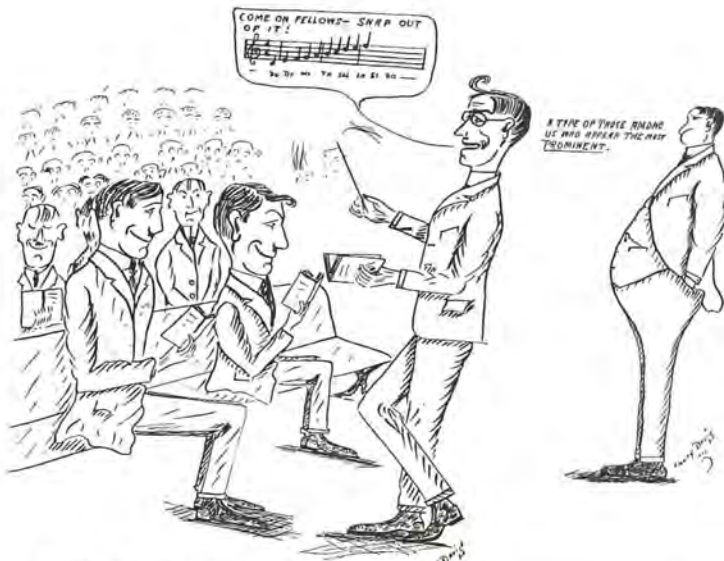
There's a moral in this little tale, I'll give it if you wish,
Whether you quit or not, Hebrew demands that we crawfish.

—ANDREW PICKENS.



If you are a good preacher, let the congregation tell it.
 If you are not asked to lead chapel on your first day's arrival, just wait ten years.
 If you find yourself at the foot of the bed instead of the head after reading Hebrew, don't be surprised.
 If you haven't studied the assignment, don't "fake," because you might get another chance.
 If you have the dignity of a Bishop you don't belong in the Baptist Church.
 If you are all for yourself the crowd is against you; but if you are for the crowd the crowd is for you.





The Right Rev. H. NUTT LEADS IN MUSIC SINGS.



THE REV. ADAM SAP ENTERTAINS ELOCUTION CLASS.

SOME OF THEM THINGS



Page 12

Sr. Civ. Hist. 4th Quarter. Adam Snob.
Apr. 1922.

One of the ~~~~~
~~~~~  
~~~~~  
~~~~~  
~~~~~  
~~~~~  
~~~~~  
~~~~~

As to that question - "I aint made  
up my mind yet." Anyway I  
know this "monesty" nurse raised  
a good deal of shed."

- Pledge -  
I have neither given nor  
received aid on this exam.  
A. Snob

Good by Prof!

FINIS

AMEN!

(S.D.)  
1922



## Class Laughs

Dr. Adams: Bro. Peacock, don't you believe that?

Bro. Peacock: Yes, I do.

Dr. Adams: Well, I do too; I am glad to hear you say that.

\* \* \* \* \*

Dr. Wayman: Bro. McKinnon, will you put this sentence on the board?

Bro. McKinnon: Yes, sir!

Dr. Wayman: Bro. McKinnon, shouldn't you have a Hireq here?

Bro. McKinnon: Yes, Doctor, but a "flying partiele" struck it and height-ened it to a Cere.

\* \* \* \* \*

Bro. Johnson: Bro. Tune, let me hear you sing the scale.

Bro. Tune: Do, for, me (Do, fa, me).

Bro. Johnson: Get on the right key, and you will have to do it yourself.

\* \* \* \* \*

Dr. Robertson: Brother, did anyone else think you preached a great sermon besides yourself?

\* \* \* \* \*

Dr. Powell (speaking of a young King): He never did get out of the "epidemic department."

\* \* \* \* \*

Bro. Nutt: Doctor, will we have to read the parallel before we can get exempted? You forgot to ask us about the assignment on the next page. Don't forget to assign us some sentences to memorize.

\* \* \* \* \*

Dr. Wayman: If you don't get this Hebrew you can't sing in the Heavenly Choir.

Bro. Popup: I will play in the orchestra, Doctor.

\* \* \* \* \*

Dr. Powell: The saloon is the poor man's club so they say, but it is a club over his head.

\* \* \* \* \*

Dr. Carver: Will you please explain to me the psychic effect of the circumlocutionary method of propounding the theological and philosophical queries concerning the ethnic religions of the aboriginal inhabitants of the northeastern section of the eastern hemisphere, commonly designated as China or the land of Sinnim?

Bro. Stover: Will you state that question again, please?

\* \* \* \* \*

Dr. Gardner: The germ is the most sociable animal we have.

\* \* \* \* \*

Dr. Powell: Tell us, Bro. Simmons, mo' about Mohammed.

\* \* \* \* \*

Dr. Dobbins: Just here we are jealous of our few moments together.



Dr. Bob: Brother, who is the greatest preacher in your Association since you left?

\* \* \* \* \*

Dr. Wayman: Turn to Canticles and read.

Student: Doctor, I haven't got the American revised; I have the St. James version.

\* \* \* \* \*

Dr. Sampey: What is the word for number?

Bro. Flirtie: I don't believe I know.

Dr. Sampey: Don't you know, Miss Parr?

Bro. Flirtie: Do you mean the one with the daghes-forte in her cheek?

\* \* \* \* \*

(A cat came into Dr. Davis' class room, and it was put under the desk and was crying, meow, meow).

Dr. Davis: I thought this was a Greek class; didn't know we were in the kindergarten.

\* \* \* \* \*

Dr. Powell: If you have any trouble, charge it to the clock and let the hands work it out.

\* \* \* \* \*

Dr. Dobbins: Will someone volunteer? I will pause just a moment.

\* \* \* \* \*

Dr. Gardner: W-e-e-l-l, I tell you, young gentlemen, it is not a matter of being poor, but being poorer than somebody else.

\* \* \* \* \*

Dr. Mullins: Is there an old or new student that would like to register? Yes; one, two, three, that is fine. Just meet me at the office with three dollars, the married men four.

\* \* \* \* \*

Bro. Hudson: How in the "Sam Hill" do you "saps" expect to pass this Church History if you don't study?

\* \* \* \* \*

Dr. Powell: Y-e-s, those "beastly-saints" went down there and raised a "lot" of "sheol," and it pleased their "papa" very much.

\* \* \* \* \*

#### COLLECTION PLATE

I. C. Spooks and U. R. Crooks were ruled out of the hand ball tournament.

\* \* \* \* \*

Dr. Davis: I am telling you this for exam; but if you've got any sense you will know it is coming anyhow.

\* \* \* \* \*

(Excuse for not being prepared.)

I pray thee have me excused—last night was an "open house" at the Training School.





Miss Tuneup: Bro. Fuller (boo, hoo'er), will you help me? I just didn't have time to finish. I knew it, too.

Bro. Fuller: I think you made it all right.

\* \* \* \* \*

Student: Bro. Hester, what does S. W. P. A. mean after your name concerning your Doctor's exam?

Bro. Hester: It means "slain with heavy artillery." (Sampey, Wayman, Powell Adams.)

\* \* \* \* \*

#### SUGGESTED NAMES FOR THE ANNUAL

Mullin-Leaves  
High-Wayman  
Carver's Blade  
Gardner's Crop  
Adams-Apple  
Powell's Points  
Davis-Dints  
Dobbins-Mud  
Tig-Bob

\* \* \* \* \*

#### THE COLLECTION PLATE

Student: Mr. Chairman, I would like to make the motion that we hear from the weather prophet.

Chairman: The motion is unanimous. We will now hear from the weather prophet.

Bro. Stover: As cleanliness is next to godliness, we expect to have showers on all floors this afternoon.

\* \* \* \* \*

New Student: Hello, Central, give me the Training School.

Central: Who are you, you ignoramus?

New Student: You don't know, a student of New York Hall wanting to make my dates for the coming fall.

Central: I think you are a little slow because the line has been busy, and don't be surprised if they all say "No."

\* \* \* \* \*

#### THE CHURCH IN 1995.

In 1995, all churches will have electric appliances for baptizing purposes, to avoid giving the pastor colds.

In 1995, all pulpits will be oscillating so that the pastor can keep the entire congregation awake during the service.

In 1995, only girls with gold teeth will be allowed to sing in the choir to remind the congregation of the heavenly chorus.

In 1995, all "cold churches" and "kid glove" churches will be artificially heated to maintain spiritual fervor.

In 1995, all collection plates will have "cash register" attachment.



TALENTS ON THE SHELF

(JUST HERE)

Kindly give your close attention  
As I make my earnest plea;  
Would you like to have the pleasure  
Of going to church with me?  
I grind away the whole week thru  
My lessons to prepare,  
'Twould cheer me up on Sunday night  
Your company to share.

(SOMEWHERE ELSE)

I have given "close attention"  
To the matter that you mention,  
So I write:  
I have heard your "earnest plea,"  
You may go to church with me,  
Sunday night.

E. M. H.

\* \* \* \* \*

COLLECTION PLATE

Dr. Davis: Let me see if I can't catch some one, Bro. Herring.  
Bro. Herring: You caught a fish, Doctor.  
Dr. Davis: Yes, now is a good time to salt him down.  
Class: He-Haw.

\* \* \* \* \*

Dr. Gardner: Young gentlemen, be yourself; that is what the world is looking for—a "self-made" man. When Dr. Broadus was here he had a way of whining around whenever he preached, and about that time we had more preachers whining around over the country.

\* \* \* \* \*

Dr. Dobbins: (Advice in putting over a financial campaign). Get them to sign pledges, and if they don't pay them, turn them out for lying.

\* \* \* \* \*

(Lady and dog passing).  
Bro. Cunningham: Bow-wow-ow.  
Dog: Gr-r-rer-fir-r-r.  
Lady: Come on here, "sweetum."

\* \* \* \* \*

(Bro. Cunningham Entertaining.)  
This is a calf looking for its mamma, ba-ah-ah-ah-ah.  
This is a pig getting its dinner, un-un-uher-uh-uh.  
This is a hen on the "new-mown hay," co-ca-ka ker ka.  
This is a blow out, not the kind we are having, s-z-z-boom!  
This is a "gobbler" about Thanksgiving time, qudle-doodle, doodle, doodle.  
This is the train blowing for "Possom Trot", we-e-ee-o-we-oo-oo-o.



Dr. Adams (Systematic Theology exam.): I don't see how I could have made it any easier. Just take your time, you know that.

Dr. Adams (Student reciting in class): Can't you remember that? I am sorry, I will give you another chance.

\* \* \* \* \*

#### THE COLLECTION PLATE

Burbank produced a toad that is hornless, and the cactus that is thornless, but thanks to Mr. Burbank if he will produce a cow that is liverless.—(The New York Hall Endurer.)

\* \* \* \* \*

Bro. Hudson talking on \$75,000,000 campaign.

Deacon: I don't believe in taking up an offering for the missionaries.

Bro. Hudson: Well, when the plate passes you, just take out some for the heathen.

\* \* \* \* \*

#### DR. TRUETT HIGHLY HONORED.

(Holding meeting near Seminary.)

Deacon (at close of service): But 'er you preached a splendid sermon this morning. You preach almost like our Pastor.

\* \* \* \* \*

#### SELF-SACRIFICING.

A brotherly question: Why do you preach from Spurgeon so much?

The Victim: Because Spurgeon is dead, and I want to tell what he said.

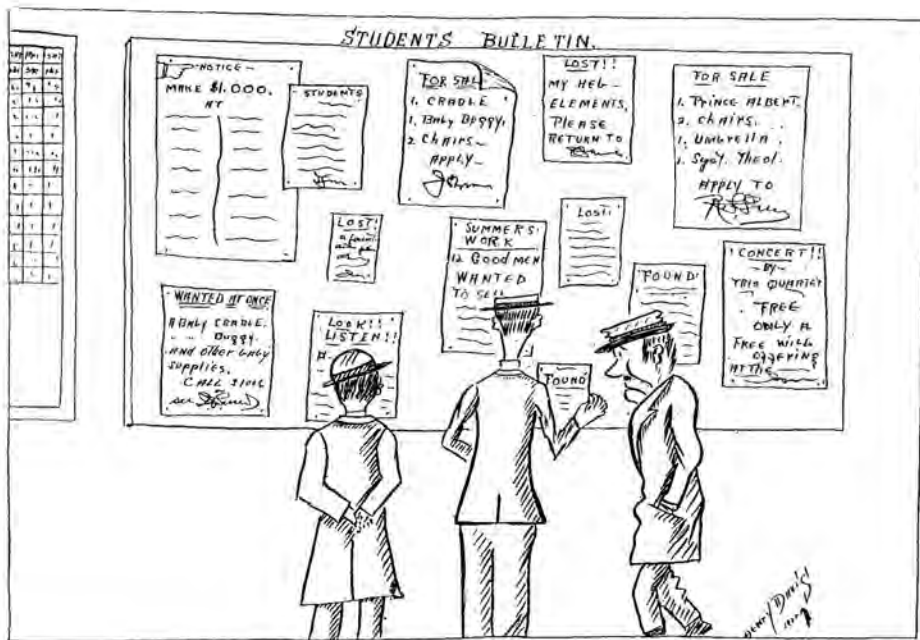
\* \* \* \* \*

Bro. Yates: Anybody need any help on their grades, just raise your hand. I believe it is unanimous.



Press of  
MAYES PRINTING COMPANY  
INCORPORATED  
LOUISVILLE, KY

# *Advertising*



## Home Missions in the Seventy-Five Million Program

---

|                                                                                                                                                                   |                 |
|-------------------------------------------------------------------------------------------------------------------------------------------------------------------|-----------------|
| Home Missions was apportioned 16% or.....                                                                                                                         | \$12,000,000.00 |
| According to Dr. L. R. Scarborough, Chairman<br>of the Conservation Commission, there had<br>been received in cash from May 1, 1919, to<br>January 15, 1922 ..... |                 |
|                                                                                                                                                                   | 30,356,319.41   |
| Of this amount Home Missions should have re-<br>ceived .....                                                                                                      |                 |
|                                                                                                                                                                   | 4,857,011.10    |
| But Home Missions has received only.....                                                                                                                          |                 |
|                                                                                                                                                                   | 3,194,311.21    |
| Balance due Home Missions from funds already<br>collected .....                                                                                                   |                 |
|                                                                                                                                                                   | 1,662,699.89    |
| Subtract Home Board debt, say.....                                                                                                                                |                 |
|                                                                                                                                                                   | 750,000.00      |
| This would leave Home Board a balance.....                                                                                                                        |                 |
|                                                                                                                                                                   | 912,699.89      |

If the Home Board had its full part of the money reported as collected we could have saved a \$40,000.00 interest account, and could close our year's work without a dollar of indebtedness, and have a substantial surplus.

---

## Home Mission Board

ATLANTA, GEORGIA

# Extra Trousers Free

With Each Suit Order

Men, order your next suit here and get an extra pair  
trousers FREE of the same material.

**\$20   \$25   \$30   \$35   and up to   \$50**

Each Suit tailored to your individual measure with  
fit and workmanship guaranteed

## Superior Woolen Mills

Incorporated

509-513 West Market St.

LOUISVILLE, KY.



*Fifty Years Young*

—Ask “him” where he  
buys his clo’es—  
If you wish to learn  
how much he knows

**CRUTCHER & STARKS**  
FOURTH AND JEFFERSON



# Keeping Fit

"The Vital Question Now Is This: ARE YOU FIT?"

The Y Is Your Best Friend for Health and Strength

SPECIAL STUDENT RATES

## Central Young Men's Christian Association

Third and Broadway

Louisville, Kentucky

---

"If you want to know whether you are destined to be a success or a failure in life, you can easily find out. ARE YOU ABLE TO SAVE MONEY? If not, you will lose. The seed of success is not in you."

JAMES J. HILL.

Begin NOW to sow the seed of Success. Start an Interest-Paying Account at this bank.

## CITIZENS UNION FOURTH STREET BANK

"The Convenient Bank"

---

# Your Friends

Across the Street for

MEDICINES, SOFT DRINKS, TOILET ARTICLES

The famous Nyal Line Remedies. Every Bottle Guaranteed to Give Satisfaction, or Money Refunded.

## Beazley Drug Company

Broadway and Fifth

---

# Lewis and Hastings

## HABERDASHERS

The Best Place in Louisville to Buy

Manhattan Shirts, Mansco Union Suits, Interwoven Hose,

Arrow Collars, Wilson Bros. Shirts, Hose and

Underwear and all well known makes of

Men's Furnishings

548 South Fourth

---:

Opposite Post Office

# WHY GO TO A BAPTIST COLLEGE

---

---

**CULTURE**—To share in the world's civilization.

**CONTROL**—To master one's own abilities.

**COMPETENCY**—To increase one's money-making power.

**CONTRIBUTION**—To give sacrificial help to the needy.

**CONSISTENT BAPTIST**—To be loyal to every Baptist interest.

**CONSTRUCTIVE BAPTIST**—To give intelligent service.

**CO-OPERATIVE BAPTIST**—To take part in every worthy program.

## THE DOMINANT MOTIVE

**T**HE dominant motive in education should be development of character that will appropriate the culture of the race, that will hold adequate control over individual forces of life, that will give competent response to duties, and that will eventuate in sacrificial contribution to the welfare of men.

**S**UCH a motive can find its true dynamic only in intimate relationship to Jesus Christ. Such a character can find its sanction only in Christian ideals. Education, that omits Christ from its ambitions and controls, fails to give recognition to truths that are the ultimates of human worth.

# EDUCATION BOARD

SOUTHERN BAPTIST CONVENTION

BIRMINGHAM, ALABAMA

W. C. JAMES, Cor. Sec.

ALBERT R. BOND, Ed. Sec.

BOOK DEPARTMENT  
**Baptist State Mission Board**  
of Virginia

Beautiful Ground Floor Store  
218 North Second Street - Richmond

---

BIBLES, RELIGIOUS BOOKS, CHURCH SUPPLIES

---

Net Profits Expended in Colportage Work

Joseph T. Watts

George F. Reynolds,

S. S., B. Y. P. U. and Colportage Sec.

Manager Book Department

---

**Y. W. C. A. CAFETERIA**

\$5.00 Buys a Meal Ticket Worth \$5.50

at

**The Y. W. C. A. Cafeteria**

Second and Broadway

Louisville, Kentucky

ARE YOU USING ONE?

---

**HARCOURT & COMPANY**

Incorporated

Designers and Makers of

Commercial and Social Engraved Stationery, Commencement  
Invitations, Dance Programs and Invitations,  
Christmas Greeting Cards, Fraternity  
Stationery, Calling Cards,  
Favors

A REQUEST BY MAIL WILL BRING A SALESMAN

# Baptist World Publishing Company



Authorized Book Store for the  
Seminary



ALWAYS AT YOUR SERVICE



Mail Orders Filled Promptly



716 S. Fifth St. ::: Louisville, Ky.

# Just What You Are Looking For

BOOKS - BOOKS - BOOKS

and

BOOKS

## OUR MOTTO

"To have; to hold; to please."

**To have:** Everything you need in the line of Books of interesting, wholesome and forceful character, to make your Library complete. Greatest themes of the day discussed by greatest minds.

**To hold:** Our patrons by our courtesy and interest in supplying their needs.

**To please:** All by our willingness to please.

|           |                   |            |
|-----------|-------------------|------------|
|           | Books on Religion |            |
|           | Books on History  |            |
| Magazines | Books of Devotion | Stationery |
|           | Books of Fiction  |            |
|           | Books of Games    |            |
|           | BOOK of Books     |            |

In Various Bindings

---

## BAPTIST BOOK CONCERN

650 S. Fourth St.    ::    ::    LOUISVILLE, KY.

\$1 \$1 \$1 \$1 \$1 **FREE** \$1 \$1 \$1 \$1 \$1  
 A SET OF A BIBLE GAME that sells for \$1 will be given with every subscription.  
 THE DIAGRAM OF TRUTH is an INDEPENDENT Baptist Paper, that believes  
 in FREE PRESS, and its columns are open to the YOUNG minister, as well as the  
 old, and stands uncompromisingly for the following CONSTRUCTIVE PROGRAM:  
 1. The Son of God ALONE, for Complete and Perfect Salvation. Acts 4:12. Jno.  
 14:6. Heb. 7:22-28.  
 2. The Church of God ALONE, for Complete and Perfect Organization. I Tim. 3:15.  
 Acts 20:28. Eph. 3:10.  
 3. The Word of God ALONE, for Complete and Perfect Government. II Tim. 3:15-  
 17. Mat. 24:35. Jer. 44:28, 29.  
 A sample copy cheerfully mailed to all inquirers.  
**SUBSCRIPTION PRICE \$1 per year.**  
 100 Letterheads and 100 Envelopes PREPAID for only \$1.50.  
**THE DIAGRAM OF TRUTH**  
 "The Church Paper"  
 TYLER -- TEXAS  
 Why not send a dollar bill NOW for your subscription, lest you forget?  
 \$1 \$1 \$1 \$1 \$1 \$1 \$1 \$1 \$1 \$1 \$1 \$1 \$1

# THE LOUISVILLE HERALD

KENTUCKY'S GREATEST NEWSPAPER

THE FAVORITE MORNING  
PAPER OF LOUISVILLE

Member of the  
Associated Press.

**SAY, PREACHER:**

Are you protected against misfortune?  
Is your family?  
We help you carry insurance while in school.

**J. CRANFORD HARDIN, Agent.**

Pan-American Insurance Company  
LOUISVILLE, KY.

City 1009

1316 Starks Building

DO YOU WANT \$1,000?

You can have it for less than  
30 CENTS A DAY

## LOUISVILLE NATIONAL BANK

Come in, and ask about it

The Big Red Building

Fifth and Market Sts.

BUY YOUR NEXT SUIT AT

## GOLDBERG

206 South Fourth Street      Lou'sville's Leading Tailors

ALSO READY-TO-WEAR SUITS  
GABARDINE RAINCOATS UPSTAIRS

Come to Our Store, Learn Our Prices—then you'll be a  
customer, too

COME IN and GET ACQUAINTED      ESTABLISHED 1898

City 9232

Main 631

## FINE PHOTOGRAPHS



## Scottow Studio

654 South Fourth Street

Louisville, Kentucky

"YOU'LL FIND IT WORTH WHILE"

TO LUNCH AT THE

## Standard Cafeteria

No. 219 South 5th Street  
Bet. Market and Jefferson.  
LONAS KEITH, Manager

No. 664 South 4th Street  
Near Broadway  
MRS. JOHNSON, Manager

LADIES INVITED

A VERY CLEAN PLACE

THE BEST OF FOOD AND A LARGE VARIETY

Reasonable Prices - Prompt Service - Good Coffee

LOUISVILLE, KENTUCKY

# SUTCLIFFE'S

## Sporting Goods

Ask or Write for Catalogue

### **THE SUTCLIFFE COMPANY**

Incorporated

220 South Fourth      TWO STORES      449 South Fourth

---

## MÖLLER PIPE ORGAN

In over thirty-three hundred churches. The highest grade instruments. No organ too large or too small to interest us. Every instrument specially designed and built for the place and purpose for which it is to be used, and fully guaranteed. Booklets and specifications on request.

**M. P. MÖLLER.**

Hagerstown, Maryland

---

Home, City 4946

Cumb., Main 3946-A

## M. S. Pressing Club

548 S. Second Street      -      -      201 W. Chestnut

EXPERT DRY CLEANERS

Dyers and Pressers

Our Trucks Are at Your Service

LOUISVILLE, KENTUCKY

---

## Two-Pants Suits

We Fit all men at

**BOND'S**



517 South Fourth St.

LOUISVILLE, KY.



## LEARN BOYD SHORTHAND

Based on syllables. No shading, position or word signs. Simple, legible, rapid. Speed of 100 or more words a minute attained by 150 hours' interesting study and practice.

### INVALUABLE TO STUDENTS

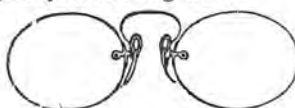
Specially arranged course in Scientific Touch Typewriting. Individual instruction any hour, day or evening.

## MORGAN SCHOOL OF SECRETARIES

736 South Second Street

Louisville, Ky.

Choose your glasses carefully. For with glasses, as with friends, it is not enough that they merely please at first meeting. They must have that priceless quality of wearing well.



## The Ball Optical Company

Incorporated

613 South Fourth Avenue

Louisville, Ky.

# JOHN T. BERRY

## PHOTOGRAPHS

622 Fourth Avenue

Louisville, Ky.

Special Rates to Seminary Students

After May 1st we will be located in larger quarters at

608 SOUTH FIFTH

Baylor College for Women, Belton, Texas, is the largest Baptist College for Women in all the world, having registered last session sixteen hundred students from sixteen states, from five foreign countries and from two hundred counties in Texas. During the past two years, five new buildings have been constructed at a total cost of nearly three-quarters of a million dollars. We have the same entrance requirements as has the University of Texas, and the same recognition from the State Department of Education. In addition to standard courses leading to standard degrees, we have Academy, Business, Home Economics, Journalism, Art, Expression, Music, Kindergarten and Primary Training courses. We have finest dormitories in South, and most reasonable. We have Loan Funds and special terms for girls of limited means. Friends everywhere are urged to put us in touch with girls we ought to have.

For additional information, write

J. C. HARDY, A.M., LL.D., President.

# ATTENTION

Yes, and SERVICE too, accorded your mail orders  
ANYTHING ATHLETIC

## **ROE-O'CONNOR**

Incorporated

662 South Fourth Street

Louisville, Ky.

South's Finest Sporting Goods Store

---

### **A Message From Those Who Sell Fine Clothing**

Fitting a personality is an art. Recognizing the difference in personalities is the result of study and experience.

We have made that a very definite part of our business here, and toward that end have assembled a very diversified variety of what is prescribed as correct in men's apparel.

### **Cunning, Lewis & Brotzge**

N. W. Corner Third and Jefferson

SEE US FOR YOUR NEXT SUIT

---

## **The Watchman-Examiner**

---

---

AN INDEPENDENT NATIONAL BAPTIST JOURNAL

Continuing *The Watchman*, *The Examiner*, and *The Commonwealth*

Baptist News from all over the World. Editorials on vital subjects. Contributed articles by our ablest writers. Interesting Book, Family, and Exchange Departments. Can any Baptist family afford to be without "The Watchman-Examiner"? The price is \$2.50 per year in advance, or less than five cents per week. If you are not a subscriber send in your subscription at once.

ADDRESS

23 E. 26th Street

New York City

# The Baptist State Convention of North Carolina

---

---

The North Carolina Mission Board is organized into Departments as follows:

MISSIONARY—PASTORAL ASSISTANCE. Two hundred and ten men on the Board last year. The pay roll was five thousand per month for the missionaries alone.

DEPARTMENT OF ENLISTMENT (COUNTRY CHURCH). A. C. Hamby, Superintendent, with eight Enlistment workers under him.

DEPARTMENT OF SUNDAY SCHOOLS—E. L. Middleton, Secretary, with three field workers.

DEPARTMENT OF EVANGELISM—Herman T. Stevens, Superintendent; three evangelists under him.

DEPARTMENT OF B. Y. P. U.—Perry Morgan, Secretary, and Miss Elma Leigh Farabow, Junior Secretary.

DEPARTMENT OF W. M. U. AUXILIARY to the Convention.

BOARD OF EDUCATION—R. T. Vann, Secretary.

BOOK DEPARTMENT—R. L. Middleton, Manager.

The State Board has engaged every North Carolina man who wants to work for the Summer Campaign.

North Carolina wants every man from the State to come home when he has finished his Seminary course.

---

---

**CHARLES E. MADDRY**  
**Corresponding Secretary**

## Have You Learned The Secret of True Success?

It was given to a young man at the beginning of his "career"—just as he was about to take his place as a leader.

Thousands of others have used that 48-word success-formula and

### IT HAS NEVER FAILED.

It cannot, because it is God's own word. Read it for yourself. Joshua 1:8. Then read verses 1 to 9 inclusive. The great Apostle Paul told his young friend Timothy that it would work in his life also. Read II Timothy 3:16-17.

### LEST YOU FORGET—AND FAIL

—use some systematic plan for incorporating this success-formula into your life and thinking. You will need a plan for reading "this book of the law" daily, coupled with explanations of the things that may not be familiar to you. All this and much more you will find in the weekly arrival of

## The Sunday School Times

Thousands of people take it for its Editorials and Open Letters, its masterly articles on Archaeology, Missions, Ways of Working, and its spiritual food and Victorious Life Messages.

Remember also that The Sunday School Times and its writers believe and teach the whole Bible as the inspired, infallible Word of God, and the shed blood of Jesus as the only but sure way of salvation.

Our "Get-Acquainted" Offer—10 weeks for 25 cents.

In order that there may be no misunderstanding, please refer to this advertisement when sending in your order.

## The Sunday School Times Co.

1031 Walnut St. Philadelphia, Pa.

# Laub Trunk Co.

Incorporated

Complete Line  
of  
Leather Hand-Bags  
and  
Suit Cases  
Wardrobe Trunks  
and  
Box Trunks.

Member Ass'n Army and Navy Stores.

Address, 516 S. Fourth

*The Right Kind of*

*Shoes*

*For Every Occasion*

*Buck's*

*Fourth at Guthrie*

Let US  
Furnish YOU  
The **DUPLEX**  
Envelope System



|                                                                                               |             |                                                     |          |
|-----------------------------------------------------------------------------------------------|-------------|-----------------------------------------------------|----------|
| 266                                                                                           | MAR 18 1917 | MAR 18 1917                                         | 266      |
| WEEKLY OFFERING<br>FOR LOCAL CHURCH EXPENSES                                                  |             | WEEKLY OFFERING<br>— FOR —                          |          |
| West Franklin<br>Methodist Episcopal Church<br>WEST FRANKLIN, IND.                            |             | Board of Foreign Missions                           | \$ _____ |
| Ministerial Support { Pastor<br>District Superintendent<br>Episcopal Fund<br>Conf. Claimants. |             | Board of Home Missions and<br>Church Extension      | \$ _____ |
| CURRENT EXPENSES                                                                              |             | Board of Education                                  | \$ _____ |
| TOTAL                                                                                         | \$ _____    | Board of Sunday Schools                             | _____    |
|                                                                                               |             | Freedmen's Aid Society                              | _____    |
|                                                                                               |             | American Bible Society                              | _____    |
|                                                                                               |             | City Missionary Societies<br>(Where duly organized) | \$ _____ |
|                                                                                               |             | TOTAL                                               | \$ _____ |

WE FURNISH any style Envelope, best quality and accurately printed, any reading matter desired, numbered, dated and collated in sets of 52 each in Cartons. If you use our plan The System will not be a financial burden on your Church Treasurer. Our many satisfied customers will testify to the high

quality of our envelopes. Send for samples and quotations today.

**MAYES PRINTING CO.**  
411 South Third Street  
LOUISVILLE, KY.

## Church Printing

SHOULD BE ATTRACTIVE, APPROPRIATE, AND DIGNIFIED. IT MUST BE GOOD PRINTING, AND SHOULD BE INEXPENSIVE.

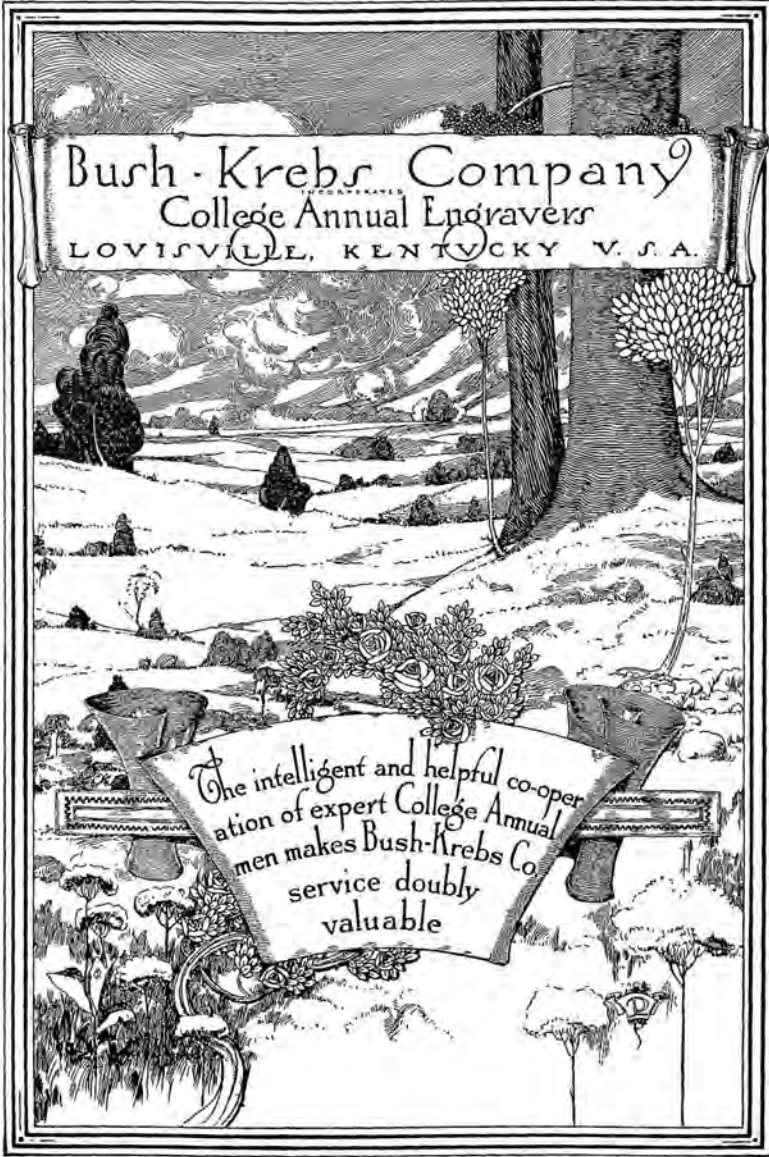
No other class of work requires such care in design and attention to detail as printing intended for church use. The Mayes Printery makes a specialty of church printing, and takes especial pride in producing out-of-the ordinary effects. Our splendid equipment successfully handles any job, no matter how large, or difficult.

We have many artistic designs and cuts, for the use of which we make no extra charge. This is conducive to the production of appropriate printing at a comparatively low price.

WE CHERFULLY FURNISH ESTIMATES ON BOOKLETS, PAMPHLETS AND CONVENTION MINUTES



411-413 South Third Street.



Bush-Krebs Company  
College Annual Engravers  
LOUISVILLE, KENTUCKY U. S. A.

The intelligent and helpful co-operation of expert College Annual men makes Bush-Krebs Co. service doubly valuable

## **The Student Office of New York Hall**

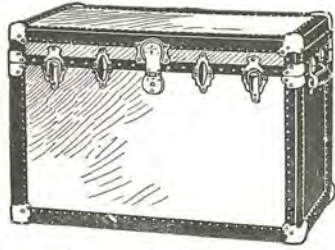
Run by the student-body for the student-body, welcomes this opportunity of greeting you.

OUR OBJECT:

“Pleasing Preachers.”

OUR MOTTO:

“Maximum Service  
at  
Minimum Cost.”



### Are You Going Away?

Then you'll need one of our Traveling Bags, Suit Cases, Dress Trunks, Steamer Trunks or Wardrobe Trunks.

Values High      Prices Low

**Taylor Trunk Co.**

Opposite Post Office

560 S. Fourth Ave.      Louisville, Ky.

## Multigraphing

Circulars      Church Papers

Job Printing

Cards for Church Census

and Invitations

—

**A. C. Duggar**

1200 Third Ave

LOUISVILLE,      -      KENTUCKY



CONTINUOUSLY engaged in the manufacture of Pipe Organs for more than one hundred years.

INSTRUMENTS unexcelled in purity of tone, reliability of action, artistic design.

SPECIALLY planned for the requirements of churches, auditoriums, theatres, lodge rooms and residences.

Builders of the large Organ in the Broadway Baptist Church, Louisville, Kentucky

**Henry Pilcher's Sons**

LOUISVILLE,

-      -      KENTUCKY



You should see this New Song Book for 1922



## “The Pilot”

Many choice New Songs by Roper Harkness, Jack Scholfield, Benton D. Ackley, Scott Lawrence, Morton, Reynolds, McKinney, Sellers and others.

Coleman Song Books are Standard and World-Famed  
ROUND AND SHAPED NOTES AND ORCHESTRATED

### PRICES

To Any Part of the United States

|                  | Express not Prepaid |        | By Mail Prepaid |      |
|------------------|---------------------|--------|-----------------|------|
|                  | Hundred             | Dozen  | Dozen           | Copy |
| Full Cloth Board | \$45.00             | \$6.00 | \$6.50          | .55  |
| Limp Cloth       | \$30.00             | \$4.00 | \$4.40          | .40  |

**ROBERT H. COLEMAN**

Editor, Publisher, Distributor

Slaughter Building, Dallas, Texas

Depository also in Chicago

## Adler Celebrated Pianos and Reed Organs

Are nationally known for their excellent performance in Church, Sunday School and Home.

Sold Direct from Factory to Customer

Export Shipments to all parts of the world.

## Adler Manufacturing Company

Incorporated

LOUISVILLE, - KENTUCKY

VISIT THE  
**U R M A STORE**

for

Groceries, Fruits, Vegetables  
Confections and Notions

EVERYTHING  
CLEAN AND FRESH AT  
REASONABLE  
PRICES

Your Patronage Solicited

## O. S. COLEMAN

Fifth and York

## You Reap What You Sow

PLANT

## HALL'S PREMIUM SEEDS

and

## REAP A GOOD CROP

Catalogue Free

## Hall Seed Company

Incorporated

Preston and Jefferson

LOUISVILLE, - KENTUCKY

# The Western Recorder

Continuing The Baptist World and The Western Recorder.

The Western Recorder is owned by the Baptists of Kentucky. It serves the particular needs of the large local Baptist Body as a medium of denominational publicity.

At the same time it has inherited from its two forebears a large Southwide and indeed nationwide constituency, which enables it to render a service of unique value in concerns of general denominational interest—a service recognized as particularly needed at the present time.

Both by tradition and present performance it seeks to fill the measure of "contending earnestly for the faith once for all delivered to the saints." This it is doing in a day when firm belief in Christian fundamentals is by many being flouted in favor of a religious sentimentalism, which rejects God's authority and appeals only to "inner experience."

Our contributors include many of the ablest Baptists of America, who have a message for the maintenance of the truth of Christ in troublous times.

**Two Dollars a Year. Send Us Your Subscription.**

**VICTOR I. MASTERS, Editor**

205 East Chestnut Street

Louisville, Kentucky



## Ushering In Spring Clothes

Here are the clothes that make us proud of the fact that we're in the clothing business.

The advance Spring models are arriving daily—never finer, never better in our history. May we expect a call soon?

## Levy Bros.

*The South's greatest store for men and boys*

MARKET at THIRD

# The Southern Baptist Theological Seminary

LOUISVILLE, KENTUCKY

Unrivalled Combination of Advantages for the Young Preacher

Session of 32 Weeks. Opens Sept. 19, 1922.

---

## I. LOCATION.

1. In an ideal climate, midway between the long winters of the North and the long summers of the Gulf States. Louisville's health record stands near the top in the list of large cities in the United States.
2. Within a short distance of the center of population of the United States, and with railroad connections to all parts of the South and the country.
3. In a metropolitan city, to which great preachers, lecturers, musicians and artists come, affording rare opportunities for the student.

## II. SCHOLARSHIP.

The Faculty includes a number of specialists of international reputation in their respective departments. The members of the faculty have produced more books than the faculties of all other Southern seminaries of all denominations. Many of these books have been translated into three to six foreign languages.

## III. PRACTICALITY.

The Seminary is famous for training practical and efficient ministers.

1. In **Evangelism**. The school is and ever has been intensely evangelistic. A special course of lectures is offered on Evangelism.
2. In **Sunday School Pedagogy**. Its graduates are creating a new era in Sunday School efficiency.
3. In **Music**. A course required for graduation is taught every year.
4. In **Sociology**. A working knowledge of social conditions in the great modern world is imparted.
5. In **Missions**. The course deals with practical and urgent mission problems.
6. In **Elocution**. Insistence upon proper use of the voice in public speaking, the preacher's chief asset for efficiency.
7. In **Sermon Making**. A mighty factor in a preacher's success.
8. In **Church Efficiency**. A course of extraordinary value to pastors.
9. **The Woman's Training School** affords unexcelled opportunities for the wives of married students. There is a special class for them, with lecture courses which they find of great value.
10. Unsurpassed opportunities for practical experience in mission and social service work in great hospitals and many charitable institutions.

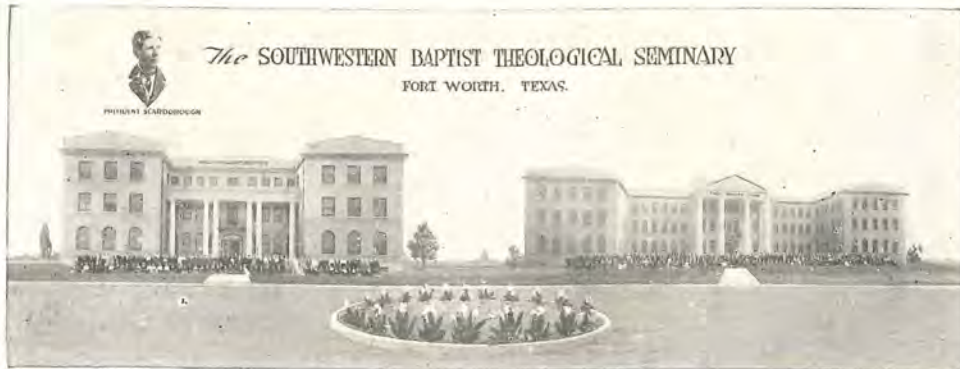
**TUITION FREE.**

**EXPENSES MODERATE.**

In regard to financial assistance, write **B. Pressley Smith**, Treasurer Students' Fund.

For catalogue or general information, address **E. Y. Mullins**, President.

NORTON HALL, LOUISVILLE, KY.



## Southwestern Baptist Theological Seminary

SEMINARY HILL, TEXAS

A regular theological seminary, with full seminary studies—Greek, Hebrew, Systematic Theology, Church History, Homiletics, English Bible, etc.—with some unique features, as follows:

1. A **Mission Department**, with a strong force of scholarly teachers, covering the whole field of Missions, with special instruction given to prospective missionaries by teachers with long experience in the foreign field. We have mission departments for Russians and Mexicans.

2. **Department of Evangelism**. Two years, full course for all students in the art of soul-winning, covering the whole field of Christ's and the Apostles' methods, principles, doctrines, and ways of soul-winning, with a practical department of soul-winning covering requirements for all students in the Seminary, with a large field for special service in the city of Fort Worth and environment.

3. A **Department of Gospel Music**, offering two-years and three-years courses leading to degrees in Music, a competent faculty of 12 people, giving instruction in Voice, Piano, Orchestral and Band Music.

4. A thorough-going **Department of Religious Education**, with 5 teachers, covering the whole field of Sunday School work, B. Y. P. U. work, and other phases of Kingdom and church work.

5. **Courses in Correspondence**, free, offering practically all the courses given in residence to students anywhere desiring to take it. An enrollment in the Correspondence department of around 800.

Abundant opportunity for church work in reach of Fort Worth for ministerial students. Opportunities for Gospel singers in evangelistic and choir work offered to students in Gospel Music.

Aid given where necessary on personal expenses.

A great plant, a scholarly faculty, a student body of the session 1921-22 of 775. High tides of spiritual evangelism. Splendid equipment for single and married students. Healthful climate. In the center of a great Baptist empire.

For further information, write to

L. R. SCARBOROUGH, D.D., President,

Seminary Hill, Texas.

