

VOL. XI

NO. 4

AUGUST 1911

 KENTUCKY 
Mission Monthly

Pastors, Superintendents, Teachers

REMEMBER

State Mission Sunday School Rally

Day, Sept. 17, 1911.



The Foreign, Home and Kentucky Mission Monthly Journals all for 60 cents

The NEW EVANGEL



Has been adopted by the
General Evangelist,
Dr. Weston Bruner, of the Home
Mission Board

because of the merits of the
book. It contains a choice
lot of

TODAY'S POPULAR FAVORITES
Select Invitation and Decision Songs
STANDARD OLD HYMNS

Pastor M. E. Dodd, of 22nd and Walnut St.
Church of this city, says: "It is the best
book I ever examined."



PRICES: Full Cloth Board, 35c each, postpaid. \$3.50 per doz., carriage
extra. \$25.00 per 100, carriage extra. Embossed Limp, 25c each,
postpaid. \$2.25 per doz., carriage extra. \$15.00 per 100, carriage
extra.

SEND ALL ORDERS TO

Baptist Book Concern

INCORPORATED.

636-638 Fourth Ave.

LOUISVILLE, KY.

The Kentucky Mission Monthly

"LET HIM THAT HEARETH SAY COME"

VOL. XI.

AUGUST, 1911

No. 4.

IN THE HEART OF THE MOUNTAINS.

W. D. Powell.

I attended the meeting of Blackford Association. They were very gracious to me. They loyally support our mountain work, both missionaries and church building. I arranged this morning to dedicate a church house the fourth Sunday in next October, where Blackford Association gave the last \$30 through the State Board. I am writing this letter less than three miles from the church they help build. On Wednesday I was laying the work on their hearts. I am not far from a missionary they are supporting through the State Board. If all of our Associations will support the work as Blackford does, we will be able to meet all of our financial obligations.

Leaving Blackford I rushed across the State to Bracken Association. They gave me an appreciative hearing and I believe that they will lovingly stand by us in our great work. This body embraces eleven counties. Their territory extends far into the mountains. We feel that a better and brighter day is ahead of them.

Here in Salyersville we have a school maintained by the Home Board. Bro. A. C. Harlowe is the worthy president. Bro. H. L. S. Toomer is the enthusiastic pastor. I am here conferring with the brethren in regard to a house of worship, which they greatly need.

I had a delightful conference this morning with Elder L. F. Cauñill. He was on his way to his appointment at Licking River church. For twenty-four years he has labored here and is held in highest esteem by the people of the county. He has made some enemies by the bold stand he takes against the liquor traffic. He has recently done some fine work at Farmers, in the bounds of Bracken Association.

He has started an interesting work on

Middle Fork. They will build a house of worship and we will help them from the Building Fund.

He tells me that from here to the head of Licking River, twenty-five miles away, there is not a church house of any kind, though the country is thickly settled. There is no Missionary Baptist church from here to Morehead, sixty miles east. If the Lord continues to bless us we will soon occupy these waste places.

I attended a meting at a United Baptist church today and after two brethren had preached they granted me the privilege of speaking. I enjoyed the service. Brethren Harlowe and Toomer were with me.

Salyersville, August 5th.

MISSIONS IN THE SUNDAY SCHOOL.

It is of greatest importance that missions shall be taught and practiced in the Sunday School. Pastor, superintendent and teachers should believe in missions and give to missions. A generous teacher makes a generous class. A giving pastor makes a giving church. We lose large sums of the Lord's money for missions by the neglect of indifferent teachers and officers. It is sad to go into a school where a penurious superintendent is dishonoring God by encouraging all to give a cent when they could give a nickel or a dime or even larger sums. I once had a class in a Sunday School that were giving a mere pittance to missions. I convinced the teacher that they could do larger things. She made her living with her needle. She began to give twenty-five cents each Sunday and the class caught the spirit and as long as I remained the class never failed to raise as much as \$5.00 each Sunday for missions. The spirit of missions is the spirit of growth and heavenly mindedness. Let every Sunday School on Sept. 17th break all previous records.

SUNDAY SCHOOL DEPT.

Louis Entzminger, Editor

WANTED.

**Five Thousand Kentucky Baptists to
Enroll in the Teacher Training Work
During August and September.**

We are hoping to enroll at least five thousand in the teacher training work by October the first. Surely we should easily do this, if our pastors will rally to us. Several of our leading pastors have already promised to preach to their people on the subject of better preparation for the work. How such a sermon along this line would help! If our pastors will line up in this work, preach on it and then lead their people in the work, what great things we will do for the Kingdom. Oh, brother, won't you rally to us in the work? How much our Sunday School officers and teachers and workers need this special preparation.

A pastor of one of our large churches is planning to spend two hours every night for a week or ten days the first of September, teaching a class in his church. He will have two classes, one taught by a good teacher, in the Convention Normal Manual, while he, himself, will teach a class (that has completed the Manual), "The Doctrines of Our Faith," which is the sixth book in the teacher training course. Could he spend his evenings in a more profitable way?

Another, the pastor of the largest Baptist church in the State, will begin two classes in his church in September, one in the Manual which will be composed of young men and young women whom he is going to prepare for the work, while the other will be a class of teachers who completed the Manual a short time ago. This class will take one of the advanced books.

These pastors are multiplying themselves many times. We praise the Lord for such men! There are others who are preparing to lead out in this great work. Many of our village and country pastors are going to their churches once and twice a month, spending part of their time teaching their

Sunday School officers and teachers the Convention Normal Manual. In some churches large classes of young people are being organized, taking up the Convention Normal Manual and preparing for the work whenever they might be called upon.

We are sorry to say, however, that many of our pastors, not only in the village and country churches, know nothing whatever of our teacher training course. We were surprised a few days ago in conversation with a pastor who draws a salary of over \$3,000 to find that he was absolutely ignorant of what we were trying to do in teacher training work. Many of these pastors will not take time to read a leaflet explaining the work, nor to study comparative figures showing the progress of the work. We mention this because it's impossible to make progress in the training of our Sunday School workers without the co-operation of our pastors.

We plead for your co-operation. We are anxious about the training of our Sunday School workers. We are in earnest about this. Won't you join hands with us and enlist a great number in your church in this work?

We will be glad to supply you from this office with books, literature, etc., for doing the work. If you prefer, Dr. P. E. Burroughs, of Nashville, Tenn., will supply you with anything you may need to carry on the work and will be glad to give you any information you may desire. He is the Teacher Training Secretary of the Sunday School Board.

Please send the names and addresses of those in your church who will take up the work, to your State Sunday School Secretary, who will make a record of them and forward to the Teacher Training Secretary of the Sunday School Board. From now on we want to keep a record of our enrollment in this office. **WE MUST ENROLL FIVE THOUSAND BY OCTOBER THE FIRST.**

The primal duty of the church in its relation to the world about is to make a good impression. The Master grew in favor with man as well as with God. Church members are "known and read of all men."

**Remember State Mission Rally Day, Sunday Sept. 17th in
your Sunday School Brother Superintendent.**

**SUNDAY SCHOOL STATE MISSION DAY,
SEPTEMBER 17th.**

We are asking the Baptist Sunday Schools of Kentucky on the seventeenth of September, to make a contribution to State Missions. We hope that the Baptist Sunday Schools in the State will remember this day and make a special effort to have a nice contribution for our State Mission work.

Our Secretary of State Missions, Dr. W. D. Powell, and, indeed, the entire State Board, are anxious about the progress of our State work. They are manifesting the deepest interest in the work and this is a challenge to our Sunday School workers to rally around the Sunday School Flag. Certainly the Baptist Sunday Schools of Kentucky, with very little effort could contribute five thousand dollars to State Missions. If they would do this there would be very little difficulty in placing other Sunday School workers in the field.

We hope that this contribution on September the seventeenth will show the State Board conclusively that we want to see the Sunday School work of our State make progress.

Our capable and efficient Office Secretary, Bro. A. E. Wohlbold, who is business manager of the Mission Monthly, will so keep the record of these contributions that come to the office, that he will be able to publish the names of the Sunday Schools contributing and the amounts contributed by each, so that we will know at the end of the year exactly what our Sunday Schools have done for State Missions.

**THE COUNTRY SUNDAY SCHOOL
GRADED.**

Fred C. Markert, Field Worker.

In our work of grading and organizing Sunday Schools we are often confronted with this question, "Your plan is all right, but will it work in the real country Sunday School?"

On the first Sunday in July we graded the "Three Forks of Bacon Creek Sunday School," at Hammondville, Ky., out in the country, twelve miles from Hodgenville. The condition we found at this school was

an attendance of about fifty—five classes and four officers. After taking the canvass of the community—finding out the constituency—we make eighteen classes, securing teachers for them, and twelve officers. Now as to whether it is working or not and bringing any practical results, I will let the following letter from the superintendent of the school speak for itself:

Hammonville, Ky., July 24, 1911.

Dear Bro. Markert:

It is with pleasure that I drop you a few lines to let you know how the school is getting along. I am glad to say it is beyond my expectations. We have increased interest from Sunday to Sunday, all the teachers filling their places except one or two. Our school yesterday consisted of all the officers and fifteen teachers. In all, with scholars 138 and only two visitors. We have the house curtained off.

Oh, how we thank the Lord for sending you to our rescue. I pray God's blessings upon you in your work.

Will you please send me a list of suggested names for organized classes, for it seems to be the purpose of every class to organize, also send songs to suit their names.

Answer at once and oblige,

W. R. Wagoner, Supt.

**STANDING OF THE ASSOCIATIONS IN
THE TEACHER TRAINING WORK.**

Number of Convention Normal Diplomas held by each Association.

First—North Bend, 120. Second—Long Run, 111. Third—Elkhorn, 27; Ohio County, 27; Campbell County, 27; South District, 27; Fourth—West Union, 26. Fifth—Little River, 22; West Kentucky, 22; Crittenden, 22. Sixth—Tate's Creek, 21. Seventh—Ohio River, 15. Eighth—Boone's Creek, 13. Ninth—Ohio Valley, 11. Tenth—Daviness County, 110; Liberty, 10. Eleventh—Nelson, 8. Twelfth—White's Run, 5; Concord, 5. Thirteenth—Pulaski, 3. Fourteenth—Central, 2; Severn's Valley, 2; Bethel, 2. Fifteenth—Blood River, 1; Warren, 1; Russell's Creek, 1; Laurel River, 1; Wayne Co., 1; Three Forks, 1; Gasper River, 1; North Concord, 1; Bell County, 1; Bracken, 1; Freedom, 1.

KENTUCKY MISSION MONTHLY.

Published Monthly at 205 E. Chestnut St.,
Louisville, Ky.

W. D. PowellEditor
A. E. WohlboldBus. Mgr.

PRICE 25 CENTS PER YEAR.

Entered Feb. 5, 1903, at Louisville, Ky., as
Second-class matter, under act of Con-
gress March 6, 1879.

THE STATE BOARD OF MISSIONS.

Meets Tuesday, Sept. 5, at 10 a. m.

J. D. COLEMANChairman
R. E. REEDRecording Secretary
J. F. GRIFFITHAsst. Rec. Sec'y
THOS. D. OSBORNETreasurer
W. D. POWELL ..Corresponding Secretary

SOME URGENT NEEDS IN OUR STATE WORK.

We must have before October 31st:

For State Missions\$15,000
For Sunday School and Colportage. 7,000
For Church Building 8,000

We ask the prayers, sympathies and hearty co-operation of every pastor, superintendent and mission worker in the State. We will have a most cheering report to render. God is giving us a great victory, but it would grieve and humiliate us if we should be compelled to report a discouraging debt.

Duties grow out of the very nature of things. We must recognize and meet them. Kentucky Baptists must heroically meet their obligations to our Lord's work in our own beloved State. We lament the debt on the Foreign Board, but if we are not diligent our State work will be in a similar situation. We are receiving most encouraging responses from the field the past few days and our brethren have ever been so loyal and true and wherever I go they manifest such deep interest in the work that we believe that the means will be forthcoming

"Bring ye the whole tithe into the storehouse, that there may be food in my house, and prove me now herewith, saith Jehovah of hosts. If I will not open you the windows of heaven, and pour you out a blessing, that there shall not be room enough to receive it. And I will rebuke the devourer of your cakes, and he shall not destroy

the fruits of your ground; neither shall your vine cast its fruit before the time in the field, saith Jehovah of hosts. And all the nations shall call you happy; for ye shall be a delightful land, saith Jehovah of hosts." Mal. 3:10-12.

**SUNDAY SCHOOL RALLY DAY,
SEPTEMBER 17th.**

We are asking the many Baptist Sunday Schools in the State to take an offering on September 17th for the support of Sunday School and Colportage work. The account is largely overdrawn. If every pastor and superintendent would take the matter seriously and plan for it we can receive enough to afford us substantial relief. Some schools can give \$100, others \$50, others \$25, others \$10, \$5 and smaller amounts.

Why this waste of Baptist resources by those who neglect calls like this? Conservation of our denominational resources is as essential as the conservation of our national resources, which are so much emphasized at the present time.

Many will respond to this call and make glad our hearts and call upon themselves the divine blessing. Others through sheer neglect will cause us to loose that we so much need and which the people would gladly give if the matter was presented in a proper manner.

If the superintendent and pastor are indifferent the secretary or some consecrated teacher might bring our needs before the school. Brethren, help us!

It may be little we can do
To help another, it is true;
But better is a little spark
Of kindness when the way is dark.
Than one should miss the way to heaven,
For lack of light we might have given.

"We give thee but thine own,
Whate'er the gift may be;
All that we have is thine alone,
A trust, Lord, from thee."

"Were all the realms of nature mine,
That were a present far too small;
Love so amazing, so divine,
Demands my soul, my life, my all"

Remember State Missions Sunday Sept. 17th in your Sunday School, Brother Pastor.

DEDICATION OF THE SALEM CHURCH, BOYLE COUNTY.

Last Sunday was a great day for the membership of Salem church. The old log house in which they had worshiped for more than half a century had rotted down. The indefatigable pastor, S. M. Shouse, led them in the matter of a new building. The State Board promised some aid at the completion of the house. The members are poor in this world's goods and really began the construction of the house with only \$100 in cash and promises with which to purchase the material.

The house is commodious, ceiled within and the carpenter work has all been done by the pastor and the people.

On Sunday morning, as we were passing over the mountain, so steep that the driver and myself had to walk, we were joined by a number of boys from over on Hungry Neck, who informed us that every one from that section was coming to the dedication.

The house is located near Scrub Grass. There were many more people than the house could possibly accommodate, and there was plenty of dinner for everybody.

While we had only \$150 to raise, it surely taxed our ingenuity to secure it, but with God's help and the unflagging spirit of the little band, it was completed and the house dedicated to God.

They have a good Sunday School and are accomplishing great things in building up the Masters' Kingdom.

On the first Sunday of September, we join Bro. Shouse in the dedication of the Mt. Freeman church. My engagements for dedicating church houses now include the fifth Sunday in October. These new church houses at needy points are the strongest testimonials of God's blessings on our work and are a challenge to pastors, churches, and Sunday Schools to respond most liber-

ally to the urgent call for funds for State Missions and Church Building. Next Sunday we will dedicate the church house at Kirksville.

The meetings of the Associations are now in full blast. We attended four last week and shall try to reach as many the present week. We can not be at all. Will some brother please see that the cause of State Missions and Church Building is properly placed upon the hearts of the delegates at each Association and plans inaugurated that will bring us liberal sums of money between this time and the close of our books, October 31st? Much of our abilities will be lost if this matter is put off until the last moment.

Kentucky Baptists are not responsible for the debt on our Foreign Board. We gave last year nine thousand dollars more than we gave the year before. We did it by giving Home and Foreign Missions right of way during the spring months. Now we must have the ear of the churches to the call for help that comes from our State work or it will be demoralized by a crushing debt that would call for retrenchment when the work was prospering as never before.

When I see new residences and new barns being built over the State, I say ye are having prosperous times, and when I see new Baptist meeting houses rising up as if by magic at needy and strategic points in Kentucky, I naturally say, Kentucky Baptists are prospering. "This is the Lord's doing and marvelous in our eyes." Will not every one help us in this our time of need?

ESTILL SPRINGS, TENN.

I attended the Encampment of the Baptist Young People at this place and lectured on the night of July 5th.



J. T. JOHNSON



Popular Prices

SCIENTIFIC OPTICIAN

New Location

Phones: Cumb. 989-A, Home 8989.

420 W. Walnut St., Walnut Theatre Bldg.

**MISSIONARY EXPERIENCES IN SOUTH-
ERN KENTUCKY,**

Dedication of Green Grove and Big Meadow churches.

Sunday, July 16th and 23rd, respectively, were great days for the saints at the above places. On the first named date we met a large congregation of people to witness the dedication of the beautiful new church house which takes the place of the old one. After we had raised the amount necessary to pay the indebtedness on the building, we proceeded with the dedicational exercises, which was one of great joy to the writer, pastor and church.

We predict success for Pastor J. R. Hagan and his people.

On the 23rd, we had one of the largest congregations we have ever met upon such an occasion. We had a small debt on this house, which was raised in cash and pledges.

Elder J. M. Johnson served the saints at that place as pastor for about seventeen years. Ye scribe proceeded to deliver the sermon from the text, "Upon this rock I will build my church and the gates of hell shall not prevail against it," after which the prayer was offered by Rev. Clarence Thomas, and the building consecrated to the service of the Lord.

After a bountiful dinner we reassembled for service, which was one of great joy to all of God's people. Many were heard praising God for his wonderful blessings and for the progress the saints were making at this place.

In addition to the above work I received a noble young lady and baptized her into the fellowship of Grace Union church, and also received and baptized ten persons into the fellowship of Marrowbone church, with eleven by letter and one by relation.

To do the above work required me to travel 270 miles over a rough mountainous country, but I am happy on the way in the service of my Master. Upon one trip I was compelled to float my buggy over Cumberland river on a small skiff and ford my horse in water almost over his back. This was the only way to get to my appointment in time. I could relate many other experiences, but will not take the space this time.

T. F. GRIDER,

Dear Mission Monthly:

The Master has been with us in our undertakings and though there seems little results to report I know He will use the efforts as His promises never fail and I have tried to go in His strength.

Organization and grading of Sunday School has occupied most of my time and strength this month. I have made over one hundred and fifty visits, but have held only three prayer services in homes. Visited three homes in bereavement, seven homes of sickness, led in two devotional services of Ladies Circle, attended one missionary meeting. Been present at every meeting of Sunday School, church and prayer service of the First Baptist church, aided in teachers' meetings, just organized, and we hope to be able to accomplish great things through this teachers' meeting. Thirty-three were present last Thursday evening, the second meeting.

If I have been instrumental in leading one soul to Christ during the month I know it not, but if I am faithful the harvest will come even though I never see the sheaves or can never report garnered sheaves to the Board.

This is truly a rich field and seemingly ripe unto harvest. Pray the Lord of the harvest that He will greatly use me in His way, while I am here towards the bringing in of the harvest.

Sincerely yours,

NELLIE V. BULLOCK.

Middlesboro, Ky.

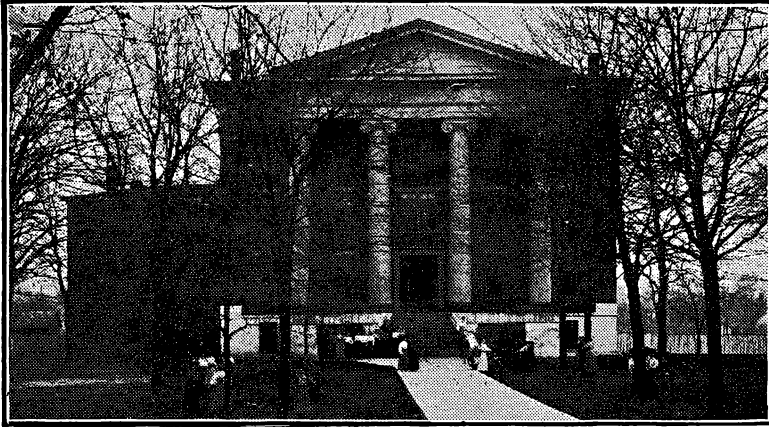
RUSSELL SPRINGS.

Early in July I was with Bro. J. W. Waldrop, at Russell Springs. This is a fine field for some minister to locate. They have a good building, which was built with aid from the State Board.

LIBERTY.

I preached at Liberty on the night of July 3rd. Bro. J. L. Adkins is the beloved pastor. He undertook to send me to the railroad in an auto, but it balked on us. I secured a buggy from a farmer and made my train.

... **BETHEL FEMALE COLLEGE** ...
 HOPKINSVILLE, KENTUCKY
 A BAPTIST SCHOOL FOR GIRLS AND YOUNG LADIES



Faculty of experienced, college trained specialists. Three years of college work in addition to the standard college entrance courses. Modern work and methods in Music, Expression and Domestic Science. Large campus and beautiful classic building. Home life of pupils, not excelled in any College in the South. High School graduates will find here an opportunity to continue their work for several years at a nominal cost. 58th year begins September 6th. For catalogue address.

H. G. BROWNELL, President.

BETHEL COLLEGE

A BAPTIST SCHOOL FOR YOUNG MEN.

The only college in the State west of Lexington doing what is officially recognized as standard college work. Accepted for membership in the Association of Kentucky Colleges and Universities.

LOCATION—Beautifully wooded campus adjoining Russellville, county seat of Logan county, Kentucky. Distinctly moral atmosphere.

EQUIPMENT—Endowment constantly on increase. Five buildings, each well adapted for special purpose. Library containing 7,000 volumes. Laboratories with every convenience for experimental work. Men's dormitory and dining hall with up-to-date accommodations for 100 students. Two literary societies, each with well furnished hall.

Our attractive literature will interest you and your boy.

COURSES—Choice of courses leading to B. A. and B. S. degrees. Also advanced courses with Master's degrees. Business training, including typewriting, stenography, bookkeeping, letter-construction, handwriting, punctuation, etc. Academy department for young students. Training in public speaking.

Expenses moderate. For any information address.

F. D. PERKINS, President

Box 333, RUSSELLVILLE, KY.

KENTUCKY CENTRAL COMMITTEE.

ChairmanMiss E. S. Broadus
 1227 Third Avenue.
 Sec'y and Treas.Miss Willie Lamb
 Box 396.

FRIENDS.

From many who were present at the Georgetown Assembly, we hear of the good attendance at our meetings, the interest shown and the promise of new societies being formed. One most important point gained is this: at this big house party in Rucker Hall our W. M. U. representatives have an excellent opportunity to talk with pastors and others from the churches, and explain matters that are often misunderstood, so that indifference is turned to friendliness. Surely all over our State a better understanding is all that is needed to cause the pastor to befriend our enterprise. On our part, we only seek to develop the women and children on certain lines, making of them better church members as they become more liberal givers to missions.

OUR FIELD WORK.

Miss Nora Lee Dover is having a busy time, attending Associations and visiting churches that have no Missionary Society. After the Georgetown Assembly she spent two weeks in Richmond and vicinity, driving ten and fifteen miles to meet appointments, organizing new societies, reviving old ones, and helping to grade and reorganize Sunday Schools. After the Dawson Springs meeting, where she had an engagement for every day, she sends me a report of a week's work. Spoke at Madisonville on Sunday afternoon; Earlington on Monday, Fordsville, Tuesday. Wednesday at Hope-well church she talked to a school house full of ladies in attendance at Blackford Association. At Hartford, one missionary talk and two on Sunday School work—seven meetings in six days, besides the traveling. From there she was going to Beaver Dam and to Leitchfield, which will be the point of departure for various places this week. Mr. Betts, the pastor, kindly advising and assisting. August 15th Miss Dover will go to Brandenburg, and from there to the Salem Association, and on to Breckenridge. It is hoped that opportunities will offer for visits to several churches in Salem Association. Two weeks in September are unengaged, but the last two weeks will be spent under Mr. Entzminger's direction in elementary Sunday School work, and in aiding Mrs. O. F. Walker, Vice President of Ohio Valley Association. Should any churches or Associations desire her services for the first two weeks in September, consider whether you can be reached from the points named without great waste of time, and write to Miss Dover, at 334 E. Broadway, Louisville, or to the undersigned, chairman of Central Committee. Give our young worker your prayers and sympathy, as well as aid in reaching the churches.

SOME EXPERIENCES OF A VICE PRESIDENT.

One of our best Associational Vice Presidents recently wrote in a private letter some experiences that may be helpful to others:

"I have made it a rule, since I have tried to serve as Vice President to make the pastors feel that I wanted their co-operation in the work. I had some trouble with a few pastors, but they were finally won. I remember one pastor who made public speeches against our work, but I was patient and kept in a good humor with him, and finally he came over and his wife was one of our best workers, serving as secretary and treasurer of the W. M. S. until they left the Association. There is no trouble when the pastors are informed, but some are prejudiced and will not seek information. . . . I am sure no Vice President had more loyal helpers. They are better to me than I deserve. I do wish I were more worthy of the honor they bestow on me. I love the work, and every one of the workers, but feel so incapable. I have never felt equal to the work and would not have undertaken it, but for the help given me by Paul's words, "I can do all things through Christ which strengthen me." May we not find in these sentences the secret of the success that has crowned the writer's labors? May many

others be encouraged to perseverance amid discouragements.

The same Vice President writes: "I have never given Miss Abercrombie a chance to say anything about the Orphans' Home, so I told her she might have a few minutes this year. She is always so ready to help along all lines, and has helped out in so many of our meetings that I feel we owe her this much."

Others can bear the same testimony about our representative of the Orphans' Home, who also keeps alive a missionary society in the Home, as part of the religious training. It occurs to the writer that helping the Orphans' Home might fitly be a part of the personal service that members of our societies are asked to give. Why not report to your Associational Vice President services rendered the Home as one feature of such work? Financial aid is not included in such reports, however, but is made separate in your Associational report from your church.

SUNBEAMS.

It is not too late to publish the letter sent out in June by Miss Warren. Older readers may well take notice of what she says about quarterly reports.

In the July leaflet of W. M. U. and in the Standard of Excellence published in the Mission Monthly for July, observe the item (d). Regular reports each quarter to State officers and to the clerk or treasurer of your own church. That means simply be care-

ful to fill out and return the report blanks sent you by the Central Committee, and does not necessitate any lengthy writing. In one church the mission committee has undertaken as part of its duty the obtaining such reports from the various mission societies and bands, and making a combined report to the church each quarter. It is of the highest importance that in some way the societies inform their own church of their contributions and their progress.

Mission literature has been sent out to all Vice Presidents and societies by Mrs. Matlack. To each society has been mailed a copy of the minutes of W. M. U. and of our new leaflet, a summary of receipts and plans. If you have not received this package, perhaps you have changed secretaries, or your secretary is absent. If all inquiries fail, write to Mrs. W. H. Matlack, 947 Brook St., Louisville. Mrs. Matlack has mailed during July nearly 800 leaflets, Mission Fields and packages. This gives some idea of the magnitude of the work we try to carry on. But we long for every church in Kentucky to have mission societies and to send reports to our Central Committee.

E. S. BROADUS.

Dear Sunbeam Leader:

Another Conventional year has begun and our work has all been planned. I do wish each of you could have been at the Convention; it was so helpful and inspiring to me. The Sunbeams of Kentucky did not quite reach their apportionments last year, but I am sure we are all going to work with

LOUISVILLE TRAINING SCHOOL

This is a thorough literary and military home school for **BOYS FROM 10 TO 20 YEARS OLD**. Industry, economy, thoroughness, discipline, gentility are its watchwords. It trains head, hand, heart daily, in school room, gymnasium, dining-room, military field. **ONLY 50 BOYS TAKEN**. Prepares for life or best universities. **ITS CERTIFICATE ENTERS A BOY ANYWHERE**. Has prepared many leading men for past 22 years. Prices very reasonable. It takes day pupils as well as boarders. If you want our prices and catalogue, **WRITE AT ONCE**, or you may be too late. Boys were turned off last term. When writing give age and advancement of your boy. Our location in Louisville's prettiest suburb gives fresh air, all city advantages and none of its disadvantages. We open Sept. 12, 1911. Address

PROF. W. H. PRITCHETT, A.M., Headmaster,
Home Phone 6620. **BEECHMONT, KY.**
Take Fourth Ave. Car, marked Park via Third.

renewed energy this present year. We have been asked by the Foreign Board to help build kindergartens on the foreign field. What an attractive work for children! The money aim—\$570. For the Home Board we are to continue the work among the Indians, and also help build schools for children, \$380. Then for the Bible fund of the Sunday School Board \$20, and Margaret Home, \$20. That we continue to give to State Missions goes without saying, but no definite amount has been asked. Let us strive with our might to reach our apportionments for these objects first. They have been assigned us by the various boards, at the heads of which are noble men—men who plan the work of world-wide evangelization and ask the different branches of W. M. U. to do certain things. What a joy it would be to go to Oklahoma City next year with our apportionments all met.

Suppose we try tithing in our bands this year. Encourage the children to take a tenth of what they make, or receive in any way, and place it in God's treasury. I believe the idea will appeal to the children and they will cheerfully lay aside "not grudgingly, or of necessity, for God loveth a cheerful giver." Will you try it, Leader? Now, about sending our contributions. Send your money each quarter to Miss Willie Lamb, Box 96, Louisville, Ky. At the same time give a report to your church treasurer, or clerk, and send me a copy of your report, too, that I may know just what you are doing. The third blank report is for your Associational Vice President. This may seem a good many reports, but it is so important to attend to each one. I want to thank all those Leaders who sent me their reports last quarter, and ask all the others to do so, too, then how many Gold Stars we would have!

Any plans or suggestions you may have will be so much appreciated if sent to me. Wishing every Leader and each little Sunbeam a happy, useful and giving year, remembering "First they gave their own selves to the Lord."

I am always your friend,

MARY LOUISE WARREN,

Kentucky Sunbeam Leader,

R. R. 6, Lexington, Ky.

RECEIPTS FOR JUNE.

Blood River Ass'n—Murray ch., H. B. T., \$125.

B. B. B.—Mrs. G. C. Garman, \$2; Miss Sallie Witherspoon, \$2; Miss Lena Wood, \$1.

Book Sales—S. J. Sheffield, \$24.50; Messrs. Moore and Gover, \$26.88; S. J. S., \$26; J. W. Gillon, \$75; C. K. H., 10c; Unknown, 52c.
man 30c.

Bethel Ass'n—Russellville ch., S. B. B., \$25.

Campbell Co. Ass'n—Bellevue ch., W. A. M., \$31.96; Newport ch., R. E. K., \$25.

Daviess Co. Ass'n—Owensboro Third ch., W. A., \$11.

Elkhorn Ass'n—First ch., Lexington, Mrs. W. E. B., \$5; Corinth ch., I. W. M., \$5.

Freedom Ass'n—Willard S. S., E. St. C., \$1.38.

Goshen Ass'n—Leitchfield ch., H. A. L., \$40.82.

Long Run Ass'n—Fisherville ch., T. H., \$4.50; Twenty-second and Walynut, L. M. R., \$84.75; Beechmont ch., O. F., \$25; Eighteenth St. ch., J. P. Mc., \$100; Smith Grove ch., H. P. S., \$5; Eight Mile ch., C. E. W., \$3.03; Eighteenth St. ch., J. P. Mc., \$68; Eight Mile ch., C. W., \$2.25; Calvary ch., W. H. J., \$25.05; Broadway ch., T. J. H., \$163.34; Highland Park ch., H. F. W., \$4.15; West Broadway ch., S. P. M., \$45; Little Flock ch., Mrs. H., \$5; Beechland ch., E. J. B., \$5.51.

Logan Co. Ass'n—D. P. B., \$3.42.

North Bend Ass'n—South side ch., F. P. G., \$15; Mrs. W. P. Cropper, \$3.

Nelson Ass'n—New Salem ch., J. P. J., \$10.

Ohio Valley Ass'n—Henderson S. S. Philathea Class, \$1.80.

Oneida Ass'n—Hubbardsville ch., T. M., \$4; Oneida ch., \$10.

Ohio Co. Ass'n—W. M. F., \$27.05.

Ohio Valley Ass'n—Henderson ch. Philathea Class, \$1.80.

South District Ass'n—Mt. Moriah ch., J. W. P., \$7.65; Danville ch., E. W. C., \$12.

Salem Ass'n—Spring ch., H. G. B., \$4.65.

Three Forks Ass'n—Hazard ch., A. S. P., \$5.

Upper Cumberland Ass'n—Harlan ch., J.

DO YOU BELIEVE IN CHRISTIAN EDUCATION?

Are You a Baptist? Is it worth anything to you?

To have in Kentucky a Baptist College equal in rank to the best Colleges in any state?

IS IT WORTH ANYTHING TO YOU

To have your sons and daughters educated in a College distinctively Christian and under men and women loyally devoted to the Denomination to which you belong.

The Baptists of Kentucky have just given liberally of their money to Georgetown College and \$10,000 additional endowment have been raised. This means increased facilities, better equipment, larger teaching force and improvements along many lines.

The College now asks the Baptists for their sons and their daughters that it may fulfill the high mission to which it has been dedicated.

FOR INFORMATION OR CATALOGUE WRITE TO

E. B. YATES, Secretary : : Georgetown Ky.

Founded in 1874 **CLINTON COLLEGE** **A Flourishing School** **Coeducational** **Personal Attention**

Motto: Character and Scholarship.

Fourteen well trained instructors. Students from eight States and two foreign countries. Beautiful campus of twelve acres, shaded with large trees. Well appointed buildings, modernly equipped.

Offers courses leading to degrees A. B. and B. S. Superior advantages in Music (Piano, Voice, Violin, Organ, Guitar), Expression, Art, Normal, Bible, Academic, Book-keeping, Stenography, Typewriting and Elementary Agriculture.

Located in one of the most inviting towns of the country, noted for its schools, health, beauty and refined people. **NO SALOONS.**

Expenses very moderate. Extra inducement offered in connection with one of the specialties. Write Immediately for catalogue to **J. A. LOWRY, A. M. D. D., Pres.**

P. J., \$35.15.

Warren Ass'n—Smith's Grove ch., H. P. S., \$5.

West Union Ass'n—First ch., Paducah, W. W. R., \$60; Twelfth St. ch., Paducah, J. R. C., \$5; Blandville ch., E. R. R., \$2.65; First ch., Paducah, W. W. R., \$60.

White's Run Ass'n—Cole's Hill ch., G. F. B., \$3.95.

Journals—Dr. Carter, 25c; N. C. Shouse,

25c; Edna Hurt, 60c; J. P. Jenkins, 50c; Mary Louise Warren, \$5.40; L. R. Woods, 25c; Mrs. W. B. Yandell, 50c; S. J. Sheffield, 60c; F. P. Gates, \$1.20; J. C. Kinsolving, 60c; E. R. Ransom, 25c; Mrs. J. L. Rose, \$1.20; J. J. Willett, 60c; Mrs. Merrie Melloo, 60c; H. B. Taylor, \$2.05; S. R. Stapp, 60c; Ind. & Lou. Traction Co., \$2.00; Mrs. Katie B. Rice, \$1.80; C. S. Ellis, \$3.10; L. Entzminger, \$1.75; Louis Thomas, 60c; F.

C. Markert, \$4; Mrs. E. J. Weller, \$1.20; C. E. Baker, 60c; Miss Nellie Worley, 60c; L. F. Nelson, 50c; W. A. Mauser, 60c; Mrs. Holtzclaw, 25c; A. C. Hutson, \$35c; F. C. Markert, \$1.10; J. W. Catron, 25c.

Individuals—M. L. Blankenship, \$15; C. C. Davidson (Seminary Students), \$9.25; Home Mission Board, \$253.33; W. M. S., Mrs. G. W. Lewis, \$20.

RECEIPTS FOR JULY.

Blackford Ass'n—H. D. B., \$25.70; H. D. B., \$85.00; \$85.00; H. D. B., \$27.91; H. D. B., \$30.

Bethel Ass'n—Auburn ch., C. C. D., \$14.50; Perbroke W. M. S., Mrs. W. E. M., \$3; Dr. T. W. Blakey, \$471.61.

Blood River Ass'n—H. B. T., \$8.59.

Bone's Creek Ass'n—Irvine ch., Z. J. A., \$21.

Book Sales—F. C. Markert, \$8.75; H. O. Meyer, 50c; L. Entzminger, \$10; L. Entzminger, 75c; L. Vincent, \$11; Cash, 20c; W. C. Pierce, \$3.40; W. D. Powell, \$5.40; W. D. Powell, \$1.50.

B. B. B.—Newport S. S., Miss L. W., \$1.

Campbell Co. Ass'n—Wilmington S. S., C. T. B., \$5; Newport ch., R. E. K., \$75.

Daviess Co. Ass'n—W. A., Tr., \$269.70.

Enterprise Ass'n—Helliér Mission ch., Z. J. A., \$5.25.

Elkhorn Ass'n—M. T., Tr., East Hickman, \$5; Midway, \$28.60; South Elkhorn, \$26.85; Mt. Vernon, \$3.83; Lexington, Calvary,

\$11.62; Lexington, Fifth St., \$14.44.

Greenup Ass'n—Williard S. S., Miss E. St. C., 93c.

North Bend Ass'n—Southside ch., F. P. G., \$15.

Nelson Ass'n—Mt. Moriah, C. C. D., \$2.12.

Ohio Valley Ass'n—J. B. T., \$100; Sulphur Springs ch., Miss L. S., \$12.23; Pleasant View, P. D. S., \$1.

Oneida Ass'n—Oneida ch., L. D. S., \$3.50.

Individual—J. W. Catron, \$5; Rev. J. S. Denham, \$10; C. H. Richardson, \$1; Second ch. S. S., W. I., \$4; D. S. P. adv., \$5; S. M. Daugherty, \$3.

Logan Co. Ass'n—D. P. B., \$1.66; Elk Lick, \$2.52.

Long Run Ass'n—Third Ave. ch., L. M. R., \$34.52; Jacob's Addition \$3; 22nd and Walnut, \$69.74; Immanuel ch., Dr. R. G. F., \$30.90; Calvary ch., W. H. J., \$15.82; Fourth Ave., O. W. M., \$72; Eighteenth St., B. V. B., \$260; W. M. S., Mrs. J. H. L., \$20; Walnut St., G. E. H., \$10; Twenty-second and Walnut, L. M. R., \$68.46; Parkland ch., \$30.15; Baptist ch., Ex. Ass'n., E. M. W., \$114.83; Eight Mile ch., C. E. W., \$2.21; Highland Park ch., W. E. M., \$8.51; West Broadway, S. P. M., \$45; Broadway, T. J. H., \$108.33; Oakdale, F. F., 30; Elk Creek ch., A. B. V., \$39.

Louisville Traction Co., \$50.

Louisville S. S. Ass'n—A. E. W., Tr., \$6.15.

Tate's Creek Ass'n—Valley View, J. P. J., \$18.

Continued in next issue.

The Southern Baptist Theological Seminary

LOUISVILLE, KENTUCKY.

Next session of eight months opens October 1st. Excellent equipment; able and progressive faculty; wide range of theological study. If help is needed to pay board, write to Mr. B. Pressly Smith, Treasurer of Students' Fund.

For Catalogue or other information, write to

E. Y. MULLINS, President.



Liberty College FOR YOUNG LADIES
ESTD. 1874

A SELECT AND HIGH GRADE SCHOOL

Modern equipment. Laboratories. Steam heat. Libraries. Gymnasium. Delightful climate. School opens Sept. 14th. Send for catalog.
R. E. HATTON, Ph.D., President. REV. G. M. BUSH, A. M., Associate Pres.
GLASGOW, KENTUCKY.

A CHAPEL FOR PATRONS



LEE E. CRALLE

Funeral Director

S. W. Cor. 6th and Chestnut Sts.

Telephone Main 430

LOUISVILLE, - KENTUCKY

Home Phone 8700

Cumberland Main 1041-Y

Office Equipment Co.

Incorporated

Modern Office Devices

Office Supplies

125 S. 4th Ave. Louisville, Ky.

Home Phone 351 Correspondence Solicited

BLUM ART GLASS CO.

INCORPORATED

Maker of Church Windows

640 Third St. Louisville, Ky.

“ANITA”

AMERICAN LIGHTEST WATER

Always Pure, Fresh & Invigorating



THE BEST COOLER ON THE MARKET

Anita Spring Water Co.

INCORPORATED

PHONES { Home 4520
Cumb. M. 1468-A LOU., KY.

-----WE ARE-----

MANUFACTURERS OF

MONUMENTS

Of High Class, But Moderate Prices

Peter-Burghard Stone Co.

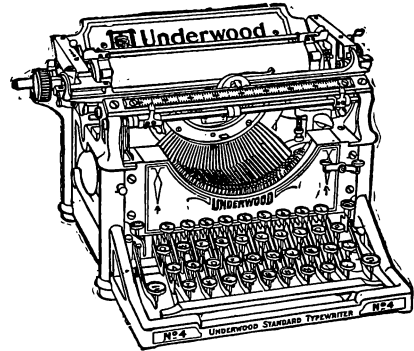
SALESROOM

317 W. Jefferson St.

PLANT

13-14 Maple St. Louisville, Ky.

Underwood Standard Typewriter



Incorporate every desired feature of all other machines into ONE and compare it feature with feature, working part with working part, and the Underwood will stand out superior.

It permits of the greatest latitude of work— does more and better work per given effort and admits of the greatest speed.

“The Machine You Will Eventually Buy”

Underwood Typewriter Company

: : I N C O R P O R A T E D : :

EVERYWHERE