

VOL. XI

NO. 6

OCTOBER 1911

❧ KENTUCKY ❧
Mission Monthly

The General Association of Baptists in Kentucky
Meets at Paducah, Nov. 15, 1911.

REMEMBER

Our State Mission Campaign Closes
October 31st, 1911.

Amounts Needed to go to Paducah Out of Debt:

State Missions	- - - - -	\$11.500
Sunday School and Colportage	- -	3.500
Church Building	- - - - -	4.000

The Foreign, Home and Kentucky Mission Monthly Journals all for 60 cents

The NEW EVANGEL

Has been adopted by the
General Evangelist,
Dr. Weston Bruner, of the Home
Mission Board

because of the merits of the
book. It contains a choice
lot of

TODAY'S POPULAR FAVORITES
Select Invitation and Decision Songs
STANDARD OLD HYMNS

Pastor M. E. Dodd, of 22nd and Walnut St.
Church of this city, says: "It is the best
book I ever examined."

PRICES: Full Cloth Board, 35c each, postpaid. \$3.50 per doz., carriage
extra. \$25.00 per 100, carriage extra. Embossed Limp, 25c each,
postpaid. \$2.25 per doz., carriage extra. \$15.00 per 100, carriage
extra.

SEND ALL ORDERS TO

Baptist Book Concern

INCORPORATED.

636-638 Fourth Ave.

LOUISVILLE, KY.

The Kentucky Mission Monthly

“LET HIM THAT HEARETH SAY COME”

VOL. XI.

OCTOBER, 1911

No. 6.

A STRENUOUS CAMPAIGN FOR STATE MISSIONS.

W. D. Powell, Cor. Sec.

It seems a little difficult to induce Kentucky Baptists to adjust themselves to September and October as closing time for our State work. Many have the old date in mind. This may lead to our defeat.

A little thing can sometimes cause sad consequences. An unfortunate remark by Champ Clark overthrew reciprocity between the United States and Canada. Some of our people are over-confident, thinking that I have pots of gold in some hidden spot, but I have nothing but what the churches give me. If I would spend my time visiting strong churches urging them to give to our work and tell them of the splendid results we have accomplished I am sure that I would have received more. But I am leaving this for the pastors to do and I spend my time on the mission territory each Lord's Day. I have visited more than thirty Associations to date. I am gratified at the interest shown where I have gone in procuring better conditions in our Commonwealth. Loyalty to Christ and loyalty to our State demand that our work have a larger place in the heart of the average Kentuckian. Fairness to State Missions demands that our pastors and churches come nobly to our aid at this period.

I know that many are waiting for the closing days to send in their offerings. Many wise pastors are laying their foundations broad and deep so as to collect during October an amount commensurate with our needs and the abilities of the church membership. This will accomplish great good.

Our Sunday School work is highly gratifying to all our people but churches and Sunday Schools are doing but little to support it. The deficit is something serious.

The hearts of all are thrilled with the

noble advance we have made in building churches at weak and neglected points, but so far our receipts for that feature of the work have been insignificant. Large sums must come to us in the next thirty days. If all hands will work our empty treasury will be filled and our bills will all be met.

We beseech pastors, churches, Sunday Schools, B. Y. P. U.'s, W. M. U.'s, and all our friends to stress the claims of State work and hasten the funds to us. Our force must redouble their diligence in gathering in funds.

Let every church and Sunday School in the State take a collection before the end of our fiscal year.

Pastors and laymen must help us secure a contribution from every member of every Baptist church in Kentucky.

OUR PROSPEROUS SUNDAY SCHOOL WORK.

We are greatly encouraged by the successful work which has been done by our untiring Sunday School workers. Schools are being graded, teacher training classes organized and the work put in a most prosperous state. Our State leads all the Southern States in this important department of church work. Our friends will take note of the fact that we must have \$4,000 this month to pay our obligations on Sunday School and colportage work. A little attention and effort on the part of the wise pastor and the far-seeing superintendent will bring us the amount needed to cover our deficit. Brethren hurry on the funds for the support of our Sunday School work.

Many people who claim they can give but little or nothing for missions are ready to spend money lavishly when a member of the family dies. It is said that in cities the undertaker's bills average \$120 each.

KENTUCKY MISSION MONTHLY.

Published Monthly at 205 E. Chestnut St.,
Louisville, Ky.

W. D. PowellEditor
A. E. WohlboldBus. Mgr.

PRICE 25 CENTS PER YEAR.

Entered Feb. 5, 1903, at Louisville, Ky., as
Second-class matter, under act of Con-
gress March 6, 1879.

THE STATE BOARD OF MISSIONS.

Meets Thursday, November 9th, at 9 a. m.
J. D. COLEMANChairman
R. E. REEDRecording Secretary
J. F. GRIFFITHAsst. Rec. Sec'y
THOS. D. OSBORNETreasurer
W. D. POWELL ..Corresponding Secretary

Our Kentucky women must rally to our aid as never before. We confidently expect them to give us \$2,500 of the \$22,000 we must have by October 31st, or close with a debt. Missionary societies must acquit themselves nobly. We have faith in their integrity and timely assistance.

Several churches pledged large amounts to our State work at the last General Association. A Presbyterian church led off with an offer of \$500 and every three months we receive a check for \$125. Several of our Kentucky churches are amply able to give \$1,000 to State Missions.

Beloved, the Master's eye rests on you in these strenuous days. Will you prove to be an asset or a liability? Which side of the ledger shall we place you?

There seems to be less friction among Kentucky Baptists and we confidently expect them to win a great victory by October 31st. Will you help?

Tithing, reader, will bring you the rewards of economy and prosperity. It takes you from the bankrupt list. I have never found a tither who did not have some money for the Lord's work. Tithing will certainly solve the financial problems of the church. "These ye ought to have done and not to have left the other undone."

Now is the time to secure a good list of subscribers for the Kentucky Mission Monthly.

We are highly gratified at the spiritual results of our State work. We are aware that often it's impossible to tabulate all the work which one has done. One of our workers, receiving \$20 a month, reports 635 pastoral visits, eight conversions, eight baptisms, twenty-four additions by letter and \$1,600 raised for a new house of worship. Another worker reports thirty-three conversions and thirty-five baptisms. Another reports 125 conversions. One of our colporters has made 2,441 visits, has had 207 conversions, 170 baptisms and has built two church-houses. He receives less than \$20 per month. One of our worthy missionaries reports sixty conversions, forty-eight baptisms, \$1,600 raised for the building of a parsonage. Another noble missionary has raised \$720 for church building and is now constructing a house that will cost \$4,500. Our missionary among the Germans reports thirteen conversions, nine baptisms and nine added by letter. One of our noble missionaries reports fifty-five conversions, forty-seven baptisms, twenty-two added by letter, \$532 raised on debt, 597 pastoral visits made.

One of our missionary pastors in the mountains reports fifty-eight conversions and fifty-five baptisms. Of course none of these are for the entire year. Some of our workers have disappointed us in the amount of labor performed and in the results that have been obtained. But no doubt there are many extenuating circumstances in these cases which are known to the Lord of the Harvest.

North Carolina has about the same number of Baptists as Kentucky and is more or less in the same category with us. They have some \$40,000 to raise for State Missions this month, Bro. McConnell, of Texas, writes me that he must have \$105,000 for the same work. Truly Kentucky Baptists will send us \$20,000. We are seeking close relations with the pastors and churches. They are our hope and stay.

The strength, not the weakness, of the Christian religion is in its tenacious hold upon men's emotions and its lofty and healthy incitement of men's feelings.

THE DEDICATION OF LOUISA BAPTIST CHURCH.

Sunday, September 17th, was an ideal day. It will be a memorable one for the saints in Louisa. I lectured on Saturday night to a full house on "My Experiences in Mexico."

Sunday morning at the close of Sunday School we assembled the building committee and the leading members in one of the class rooms. I made them a heart to heart talk about the money that was to be raised. Then I asked each one to ask God what he or she should give. It was a precious season. The house is built of concrete blocks. There is a large auditorium with beautiful windows. Adjoining are Sunday School rooms, all of which can be opened into the auditorium.

Several efforts had been made to build a church. Three times the material had been on the ground and they failed for the want of suitable leadership. About a year ago, Bro. F. Hardin wrote me that the church at Louisa had called him and that he believed he could build the church. His success has been marvelous and the building will ever stand as a monument of his undaunted courage.

Bro. Barnes drew the plans for the beautiful structure and has worked heroically until it was finished. This makes four churches in the Big Sandy Valley that Bro. Barnes has worked on. His services have been greatly appreciated.

When I informed the congregation on last Sunday morning that \$2,400 was needed to clear the church of present indebtedness no one seemed to think it could be raised, finally two citizens of the town, neither of them members of the church took hold of the matter heroically and when we adjourned for dinner, deep spirituality pervaded the congregation and \$1,400 had been secured. We re-assembled at three. Contributions began to come to us before the service had begun. For nearly three quarters of an hour we were kept busy receiving amounts. Enthusiasm ran high. I have seldom seen it surpassed. The amount was all raised and everybody was happy. Bro. Barnes then preached the sermon and Bro.

Hardin offered the dedicatory prayer.

I peached at night and we had a great time. One was received for baptism and one by letter. Baptist stock in Louisa has risen one hundred per cent. Bro. Hardin has resigned and this offers a fine field to the right man.

THE WANING CHURCH.

It is a striking fact that when a church begins to wane the moral and spiritual life begin to wilt. The soul withers without prayer and the preached word. They are as essential to soul prosperity as air, light, exercise and food are essential to a healthy body. Christ like a devoted wife says "All of the affections or none." Our missionaries and evangelists do needed and valiant service for our waning churches.

Adoniram Judson received an inheritance amounting to some \$6,000 and gave it all to the Foreign Mission Board. He did the same with \$4,000 he received from the government Burma. Who has ever equaled his liberality?

We preached the introductory sermon at Goshen Association. This is one of our oldest and best bodies. We have been receiving good amounts from them for foreign missions and we believe they are going to bear a larger share in our State work. They helped to organize the General Association nearly three quarters of a century ago.

Severn's Valley Association gave us a patient hearing and I feel that they will bear a royal part in enabling us to meet our obligations.

Bro. Gardner has been preaching at Whitesburg.

Tracts, "Will You Be a Hobab" and "Watch the Keystone," and contribution envelopes have been especially prepared for use in our State Mission campaign. They are for free distribution and can be had upon request. Pastors, churches, societies and any one in need of them address Baptist State Board of Missions, 205 East Chestnut street, Louisville, Ky.

SHALL WE PRUNE THE VINES?

As we have gone from Association to Association we have looked on splendid crops of pole beans. The vines were of luxuriant growth and laden with fruit. Suppose when the good wife suggested to her husband to stick the beans that he had gone forth with some instrument to prune them as you would a grape vine so that they would not need sticking, he would have destroyed the fruit. It would seem that some of our brethren feel that our church building enterprise, colportage, Sunday School and other features of our State work are growing too rapidly, but the trouble is, if we cut off the runners we will destroy the crop. Kentucky is a goodly land and we are well able to possess it. Let every encouragement be given to our forward move by the prompt support of the work we have done.

Articles for the Mission Monthly should be brief and crisp. We do not wish syndicated matter which has been sent to other papers. If you are inclined to be prolix, boil it down. This is a busy age. Don't beat around the bush. Be sure that your article is like a tack, i. e., has a sharp point.

We will close our books for State Missions on Tuesday night, October 31st. On the last day and night amounts may be sent to us by telephone or telegraph, but always mail a check to cover the same at the time you wire us. We have been greatly inconvenienced by some good men who neglected to mail their checks for days. Our books must be posted and audited at once.

Our receipts as we go to press are most encouraging. "All at it all along the line." This is no time for idling or dodging. Help us!

We must prove ourselves worthy of the glorious heritage our fathers have left us in this great Commonwealth.

Missionary Padgett held a meeting at the Forks of Beaver. He was aided by Pastor Shipp.

It behoves every employee of the State Board to do his utmost to gather in funds for State Missions during the entire month of October. The sum to be raised is a large one, but courageous effort and heroic giving will bring us the victory.

The growing interest in mission work in Kentucky is in no small measure due to the increased circulation of our three Mission Journals as well as to the large amount of space which our denominational weeklies have so generously given to this all important work. We are receiving encouraging lists by almost every mail and in nearly every instance it can truthfully be said "A woman did it." Let the good work go on.

No wise pastor nor trusted leader will permit his people to render as an excuse for not contributing to our State work the fact that he has repaired his house of worship, or that he is going to build a house of worship, or that he has bought an organ. The cost of these matters is never met by funds that were intended for mission purposes. "Will a man rob God?" Be careful brethren, or your Master will say, "Ye have robbed me in tithes and offerings."

Pastor H. A. Porter has had large and enthusiastic congregations the entire summer. It seems a shame to close our places of worship in the summer. President Taft recently visited three churches in Washington, on Sunday morning before he found one open. Pastors must have rest, but a supply could be secured. Some cynics cry out "The devil never takes a vacation." No, he never does anything that is good. Jesus withdrew for needed recuperation.

Pastor Cannon and his noble people have begun the erection of a splendid house of worship. We regret that we cannot be with them at the laying of the corner stone this week.

Our Baptist schools and colleges all report splendid openings. The Seminary had an unusually large number the first day.

Bro. Hardin is conducting a meeting in the suburb of Ashland and may locate there.

Our Associations are still holding their annual sessions. We greatly enjoy meeting the brotherhood. We are the recipient of great kindness and consideration wherever we go.

The spirit of the meetings indicate a spiritual uplift. The tide is coming in.

Great enthusiasm and hopefulness characterize our people.

Already we have attended more than thirty Associations and hope to reach five the present week.

White' Run met at Warsaw. Bro. Don Q. Smith is pastor. The people reminded me how they petitioned me for financial aid from the State Board. I wrote and told them that they needed a meeting. Bro. Smith, one of our evangelists, went and held a meeting and had a great ingathering of souls and they called him as pastor. They found that when revived they needed no financial help.

The State Board is constantly doing that kind of helpful work.

We were delighted to meet the brethren of Three Forks Association at Jackson. They raised a liberal offering for Church Building. The work in their bounds is developing.

We had a great day with East Union Association. It met in a beautiful house we helped to build. They made a generous gift to Church Building. Jellico church, Rev. J. E. Martin, pastor, will soon send us \$500 for State Missions.

Jellico church was established by our State Board some years ago.

East Lynn Association gave us a generous gift for our Church Building work.

We exceedingly regretted our inability to attend Freedom Association.

Warren Association gave us all the time we wanted to present the needs of our State work. We expect liberal gifts from those people.

Sulphur Fork Association treated us royally and voted \$200 for Church Building.

Each church needs a capable clerk and treasurer. The average church letter to our Associations show incompleteness and a want of the knowledge of ordinary book-keeping. It is very important that each church have a competent treasurer. He should make a definite report at each monthly meeting of all moneys handled by him and state to the church all unpaid bills and obligations. When pledges are made they should be promptly collected—we lose much through neglect. Inefficient and unwilling treasurers should not be tolerated. Treasurers holding funds for missions should make prompt remittances. It is dishonest to take funds given for missions and benevolence and apply them to current expenses, pastor's salary or any other expense of the church.

We are rejoiced to note that some of the anti-mission Baptist churches in Eastern Kentucky are taking a bold stand against vote selling. These are times when the churches of Christ must speak in no uncertain tones on certain prevailing sins. Vote-selling can not be condemned too severely.

Rev. R. H. Tandy, a native Kentuckian, educated at Georgetown and the Seminary, is now at Carrollton, Ky., and could no doubt be induced to take a pastorate with us. He has labored most successfully in Mississippi, where he is greatly beloved. A discreet brother asserts that Bro. Tandy was the best all round minister in the State. We extend a cordial welcome to the returning exile and we trust that some good church will put him to work.

Dr. A. Paul Bagby becomes pastor at Highland church, this city. He will be sorely missed in Glasgow, where he has accomplished a noble work. We expect to see the cause prosper at Highland under his able leadership.

Have you secured a list of subscribers for the three missions journals; only 60 cents a year. Do it NOW.

Nelson Association will help liberally.

SUNDAY SCHOOL DEPT.

Louis Entzminger, Editor
 State Sunday School Secretary,
 205 E. Chestnut St. Louisville, Ky.

A COMPARATIVE STATEMENT.

Showing the increase in Convention Normal Diplomas from February 1, 1911, to October 1, 1911. Notice specially Kentucky's growth.

Diplomas, February 1, 1911.

Mississippi	583
Texas	461
Alabama	430
Tennessee	287
Georgia	221
North Carolina	198
KENTUCKY	193
South Carolina	144
Virginia	133
Oklahoma	105
Louisiana	60
Florida	58
Missouri	51
Arkansas	28
Miscellaneous	12

Diplomas, October 1, 1911.

KENTUCKY	817
North Carolina	785
Mississippi	780
Texas	764
Georgia	691
Alabama	619
Tennessee	508
South Carolina	394
Louisiana	266
Oklahoma	180
Virginia	170
Florida	115
Missouri	89
Arkansas	74
Foreign	29
Maryland	11

Kentucky also leads in Blue Seal Diplomas, having forty-nine which is twenty-five more than any other State.

Comparative statement of Convention Normal Diplomas held by Association in Kentucky.

North Bend	121
Long Run	116
Bell County	63
Wayne County	44
Pulaski	40
West Union	38
Elkhorn	37
Daviess County	36
South District	32
Campbell County	27
Tate's Creek	27
West Kentucky	24
Little river	22
Crittenden	22
Ohio River	17
Ohio Valley	17
Bracken	16
Boone's Creek	14
Liberty	10
Nelson	9
Goshen	7
Severn's Valley	6
White's Run	5
Concord	5
Enterprise	4
Bethel	3
Blood River	2
Central	2
Union	2
Bay's Fork	2
Warren	1
Russell's Creek	1
Laurel River	1
Three Forks	1
Gasper River	1
North concord	1
Freedom	1
Mt. Zion	1
Simpson	1

We are very happy indeed over the progress of our teacher training work. You notice in another column that Kentucky leads the States of the Southern Baptist Convention in the number of Convention Normal Diplomas and also in the number of Blue Seals. You will notice that we have climbed from the seventh place in the number of Convention Normal Diplomas into the first place. This is very gratifying indeed and should make the hearts of every

one of our Kentucky Baptists rejoice.

Enrollments are coming in fast. We enrolled nearly 200 during the month of September, who are taking up the Convention Normal Manual, or some other book in the teacher training course. We want the names of every person for record here in our office who is now studying the Manual or any other book or any who will take up any of the books. Of course the Manual is the first book to take. We are keeping a copy of these records in our office here.

We notice that while we were enrolling about 200 in the teacher training course during the month of September in Kentucky, that North Carolina at the same time was enrolling 800 and more. It is very plain to me and I am sure, to every one of us, that if we expect to hold first place we must begin an aggressive campaign. If you are taking the work yourself, secure as many others as you can and send in their names. Let every man, and woman that is doing the work now enlist someone else. Those of us who have the time and can do it might visit other churches and present the work and organize classes. I am sure that we would be very much humiliated to be dislodged from our present place at the head of the list. So let us join hands and enroll 1,000 during the month of October. There are about 10,000 Sunday School teachers and officers in the State and we ought not be satisfied until every one of them holds not only a Convention Normal Diploma, but a Blue Seal Diploma.

Rev. J. M. Roddy, of Middlesboro, graduated the first Sunday night in September, a class of sixty-one. Eight of them received the Blue Seal Diploma. This is the record for any church in the Southern Baptist Convention. Since Bro. Roddy got back from his vacation and got down to work the Sunday School there, has gained nearly 200 in attendance. This is a remarkable record. And still one similar could be made most anywhere if we would only go about it believing like Bro. Roddy and his people that it could be done and using the very best methods of management.

We had the pleasure, recently, of delivering the diplomas to a class of sixteen in the Baptist church, at Kevil. Rev. Wallace

Wear is the pastor of the church and taught the class. He had some from others of his country churches who did the work. Several others who are taking the course will complete it soon. At the conclusion of the exercises and on behalf of the class, the writer presented Bro. Wear a beautiful diamond stick-pin in appreciation of his faithful and earnest efforts in leading his teachers and workers into a more efficient service for the Lord. Bro. Wear is one of the most aggressive pastors in the State and the work in his field is undergoing a revolution. Great progress is being made, not only in this church but in every one of his churches. He lives in his own home and has one of the finest fields in the State. He does not covet a city pastorate, though several have been trying to secure him recently.

Bro. Dennington, another active pastor in that section of the State was in this service with us and reports progress along all lines in his own pastorate.

Rev. S. E. Tull, of Paducah, is in the midst of one of the greatest revivals that the First Baptist church there, has ever enjoyed. At the end of the first week about thirty-five additions were reported. They are expecting a great ingathering. Bro. Tull is doing his own preaching. He has just been leading his teachers in book No. 6, in the teacher training course, "The Doctrines of Our Faith," and will soon begin another class in the Convention Normal Manual. The class finishing the "Doctrines of Our Faith," already holds the Convention Normal Diploma.

The following teacher training classes have been reported:

In the Baptist church, at Burnside, Bro. Wilkinson has a class of twenty-two who now hold the Normal Diploma and are taking the Graded Sunday School.

Bro. J. M. Price, of Benton, reports a large class in the Convention Normal Manual.

Rev. W. R. Hill, of Clinton, Ky., reports two classes, one in book six and one in book two, and will also have a class in the Convention Normal Manual. How does this sound for a busy pastor?

(Continued on page 11.)

KENTUCKY CENTRAL COMMITTEE.

ChairmanMiss E. S. Broadus
1227 Third Avenue.

Sec'y and Treas.Miss Willie Lamb
Box 396.

**HEADQUARTERS OF W. M. U. OF
KENTUCKY.**

Through the kindness of our State Mission Board, we are enabled to carry out a long-cherished wish, and we shall now have, at 205 E. Chestnut St., a permanent home for our supplies of tracts and missionary literature of various kinds. We are fortunate in securing for Office Secretary, Miss Nora Lee Dover, who has done much good service as field worker during the summer, and will continue to act in this capacity, also Miss Dover's post-office address will be Box 396, already familiar to the societies as Miss Lamb's address. When she is out of town, orders will be filled by some other member of the Central Committee. Mrs. W. H. Matlack has faithfully attended to the duties of Distributor of Literature during the summer, and has sent over 1,200 letters and packages. She undertook it with the understanding that she would be relieved at an early date, and she retires from this special service with the hearty thanks of the fellow-members of the Central Committee.

State Missions is for this month as well as in September, a main object of our prayers and gifts, that we may present a worthy report at our Annual Meeting, at Paducah, November 15. Do you doubt the need of large offerings for this cause? Then read Dr. Powell's fervent appeals in other columns of this paper, and in our other religious papers. Many places in our own State are calling upon us for pastors, for help in sustaining Sunday Schools, or for building meeting houses. Our woman's mission societies have always responded nobly to such calls, and let them not fail us now. A recent article by V. I. Masters, the gifted Editorial Secretary of the Home Mission Board in Atlanta, tells of traveling through the mountains of southwest Virginia, attending their Associations, and he

bears strong testimony to the faith and zeal of the mountain preachers. One of them who only received \$12.50 for a year's salary from two churches, gave five dollars for the mountain school in his Association. Those who say and heard some of our Kentucky mission preachers at the General Association were impressed with their devotion and consecration to their work, and resolved to stand by them with money as well as with voice and pen, as they labor to bring men to a knowledge of our Lord and Saviour, Jesus Christ.

Meantime, we must not neglect our contributions to Foreign Missions, or to the work of our Home Board, 'n which we are far behind what we are expected to give. The subject for study in October is a World Survey of Missions, which will reveal more clearly the many, many fields that are ripe for the harvest, and waiting for the reapers that we must send. The debt upon the Foreign Board has made it impossible for new missionaries to go out, yet many are waiting to go, and everywhere recruits are needed. We should rally our forces and bring in new members in this enlistment month, and bring every possible influence to bear in the effort to secure large sums for these Boards.

The Sunday School Board, what are our duties to this branch of our work? To spread the use of its lesson-papers, teacher, quarterlies, and the various papers for children. Nowhere can you find more interesting and wholesome reading for our young people, adapted to their capacity than in the different papers, "The Child's Gem," "Baptist Young People," and "Kind Words." There are historical and descriptive articles, good stories and missionary columns that are fascinating* reading for old and young. This Board is doing a great service for the denomination by promoting the study of Missions in our Sunday Schools. Let us heartily second their efforts to bring up the children aright in this important matter. True knowledge of the Bible is the best aid in implanting the missionary spirit. In this connection it may be allowable to mention a new Bible book that is just coming out, and may be had from the booksellers for one dollar. Thos.

Nelson & Son are publishing "The Heart of the Bible," specially prepared for young people, parents and teachers, by Ella Broadus Robertson. It tells the Bible stories in Bible language, with the necessary omissions, making plain its one theme, "How God's world sinned against Him, yet He loved and saved it." The clear arrangement and explanatory headings make it attractive to children, who will also like the large type and carefully selected pictures. It is hoped that many will be led to understand the Bible better, to love it more deeply, and to walk in its light.

The Bible Work of the S. S. Board is the part for which we are asked to give money and the very smallness of the amount seems to make it hard to collect. One hundred dollars is all the societies of the whole State are asked for, to help give Bibles to the destitute, including the foreigners, who come into our ports.

New Vice-Presidents.

Some changes are to be noted in these officers, who sustain a two-fold relation, to their own Associations and to the Central Committee. It has therefore become customary for them to be chosen at their Associational Meeting and to have these elections ratified by the Central Committee. Where resignations occur in the interior, the places must be filled by Central Committee, upon consultation, of course, with their fellow-workers and pastors.

In Daviess County Association, Mrs. S. W. Anderson resigned, on account of frequent absences, and her associate, Mrs. Phil J. Miller, was elected Vice-President, with Mrs. E. B. English as Associate. Mrs. Miller has always shown lively interest in the work, and is now making a vigorous campaign for new societies.

Mrs. J. A. Slaughter, of South District Association, has passed to her reward, but to the last her heart was full of the Lord's work, and she suggested one to take it up in her place. Mrs. J. C. McClary, of Stanford, who consents to accept the appointment of Central Committee, trusting in the strength which God supplies to those who humbly seek his grace.

Miss Etta English has moved away, and Breckenridge Association chose Mrs. Mamie Gregory, of Harned, in her place.

Mrs. E. B. Sayers, Vice-President of North Bend, has moved to 128 Clinton Ave., Georgetown, and her place remains to be filled. Mrs. Sayers is now President of the W. M. U., of Kentucky, and will be much helped in getting up the program if names are sent her promptly of those expecting to attend the Annual Meeting, November 15th and 16th, in Paducah.

Delegates will consist of Vice-Presidents of Association, one member from each Society in the State, three from the Paducah Society, and members of the Central Committee. Let us have a large attendance, that we may plan wisely for the coming year.

Tracts, "Will You Be a Hobab?" and "Watch the Keystone," and contribution envelopes are for free distribution. They can be secured from the Central Committee by addressing Mrs. W. H. Matlack, 947 S. Brook street, or Miss Nora Lee Dover, 205 East Chestnut street, Louisville, Ky.

SUNDAY SCHOOL DEPT.

Continued from page 9.

Bro. W. D. Edmiston, of Crab Orchard, Ky., reports a nice class in the Manual.

Bro. R. C. Kimble, of the Belleview Baptist church, reports a large class taking up book No. 1.

Bro. J. F. Detweiler, of Union Band church, reports a fine class in the Manual.

Rev. F. L. Hall, of the Deer Park Baptist church, Louisville, reports a fine class in the Manual.

Rev. G. D. Billeisen, of the Ormsby Ave. church, Louisville, reports a fine class taking up the Manual.

Rev. Benj. Sargee, of the Ninth and O. Sts. church, Louisville, reports a class in the Manual. Also some who are taking up book No. 2, "The Graded Sunday School."

Mr. M. J. Holbrook, of Whitesville, reports a fine class in the Convention Normal Manual.

Dr. W. E. Mitchell, of Pembroke, reports a large class.

Rev. Jas. A. Clark, of the Van Buren St. church, Louisville, reports a class in the Manual recently organized.

A great number of individuals all over the State are sending in their names, taking up the different books in the course. Now is the time of year to begin. Organize a class if possible, and send us their names and the number of book they are taking. If you can't begin a class take up the work individually and send us the names. After making a record here they will be forwarded to the Teacher Training Secretary, at Nashville, Tenn.

RECEIPTS FOR SEPTEMBER.

- Bethel Ass'n—A. F. G., \$7.28; Adairville S. S., W. C. M., \$2.75; Mt. Zion ch., A. F. G., \$5.25.
- B. B. B.—Miss. M. K., \$1; S. D. W., \$2.
- Boones' Creek Ass'n—W. P. H., \$64.25; Mt. Olive S. S., A. H., \$3.
- Bay's Fork Ass'n—T. W. S., Tr., \$126.41.
- Baptist Ass'n—W. D. P., \$145.52; Salvisa ch., W. D. P., \$25.
- Bell Co. Ass'n—Middlesboro ch., C. D., \$14.16.
- Breckenridge Ass'n—J. J. Willett, \$58.57; English ch, J. A. S., \$4.60.
- Blood River Ass'n—H. B. T., \$16.73.
- Bracken Ass'n—T. F. G., \$83.76.
- Book Sales—L. V., \$23; L. E., \$24.90; F. M. McC., \$300; W. D. P., \$2.90; W. D. P., \$1.50; F. C. M., \$3.75; E. K. H., 50c; E. E., 25c; W. D. P., 40c; E. B. E., \$7.25.
- Central Ass'n—Rockbridge ch., J. A. B., \$4; Mackville S. S., J. A. B., \$5.59; New Hope ch. S. S. B. C., \$1.
- Concord Ass'n—Artemus ch., J. H. D., \$11; Greasy Creek ch., J. H. D., 80c; Centennial ch., J. L. S., \$1.25; Ebenezer ch., J. H. D., \$2; E. L. S., 50c.
- Crittenden Ass'n—T. J. B., \$149.23; Mt. Zion S. S. M. W. B., \$2.
- Campbell Co. Ass'n—Bellevue ch. S. S., Wm. G., \$2.86; First ch. Newport, R. E. K., \$100.
- Central Presbyterian ch.—W. L. A., \$125.
- Central Ass'n—J. O. B., Tr., \$30.25.
- Daviess Co. Ass'n—Hopewell ch., W. H. R., \$2.36; Karnes Grove ch., W. H. R., \$7.32; Newman ch., W. H. R., \$7; Calhoun B. Y. P. U., W. H. R., \$3.35; Livermore ch., W. H. R., \$5; W. H. R. (Orphans' Home), \$28.67; Calhoun S. S., J. J. D. B., \$3.11; Whitesville S. S., M. J. H., \$5.
- Elkhorn Ass'n—Paris ch., W. H. C., \$54; Bryan Sta. S. S., T. M. J., 71c.
- East Lynn Ass'n—J. T. McF., 50c.
- Edmonson Ass'n—Joppa S. S., W. E. C., \$21.
- Enterprise Ass'n—Z. J. Amerson, Tr., \$22.80; Marsh Creek ch., 73c; Prestonsburg ch., R. A. B., \$5; Allen ch., E. C., \$180.
- Franklin Ass'n—Buck Run S. S., Miss H. F., \$7.13; First ch., Frankfort, P. L. C., \$24.83; Pleasant Ridge S. S., \$1.
- Goshen Ass'n—Clarkson ch., H. A. L., \$6.60; Pilgrim ch., \$2.35; Liberty ch., \$1.25; H. A. L., \$23.01.
- Greenup Ass'n—Willard S. S., Mrs. St. C., 81c; Pollard ch., F. E. M., \$38.87; Geiger-ville ch., F. E. M., \$4.05; Russell S. S., D. B. R., \$2; First Bapt. ch. S. S., R. H. K., \$3.68.
- Individuals—F. P. D., \$5; Rent, \$3; Home Mission Board, \$200; W. G. P., \$1; Home Mission Board, \$72.90; Louisville Traction Co., \$50; Foreign Mission Board, \$100.
- Journals—R. R. N., \$3; H. L. S. T., 60c; T. A. J., 60c; Mrs. H. P. G., 85c; W. D. P., \$2.65; H. B. T., \$1.05; Mrs. S. D., 60c; T. H. P., \$7.75; Mrs. A. M., \$1.80; Mrs. A. M. K., 25c; L. H. G., \$1.80; Miss G. G., 60c; Dr. W. T. B., 25c; W. D. P., \$11.25; W. D. P., \$13.85; E. R. R., \$1.95; Z. J. A., 60c; M., 60c; W. D. P., \$2.40; Mrs. J. L. H., 60c; E. G., \$1.20; E. McC., \$4.65; W. D. P., \$3.30; Mrs. J. P. G., 25c; W. R., \$1.45; W. C. J., 60c; Mrs. W. A. H., \$2.40; W. P. W., \$1.20; Mrs. M. M. T., \$1.80; Mrs. J. T. McG., 60c; Miss B. H., 60c; B. V. B., 60c; Rev. E. W. C., \$14.65; C. M. C., \$1.25.
- Long Run Ass'n—Beechland ch., E. J. B., \$3.15; Parkland ch., H. T. L., \$10; Fourth Ave. Bapt. ch., O. W. McC., \$33.32; Taylorsville ch., W. R. S., \$37.39; Jacob Addition ch., L. M. R., \$5.30; Kosmosdale ch., \$4.22; Beechmont ch., \$16.18; Little Flock ch., Mrs. H., \$4; Highland Park ch., W. E. M., \$3.86; J. H. P., \$15; Franklin St. ch., \$43.14; Calvery ch., W. H. J., \$17.95; Eight Mile, C. E. W., \$1.83; Hazelwood ch., C. B. A., \$7.75; Hazelwood ch., Mrs. C. B. A., \$5; Calvery ch., S. W., \$11.71; Beechmont S. S., E. S. R., \$5; Kings ch., W. E. P., \$4.75; Little Flock, Mrs. J. R. H., \$1.37; Portland Ave. ch., T. M. F., \$5; Kosmosdale ch., C. K. H.,

\$1; Jeffersontown ch., \$29.69; Ormsby Ave., G. D. B., \$18; Pleasant Grove, G. W. B., \$15; Meadow Home, per J., \$2.75; Little Flock, Mrs. J. H. S., \$14; Broadway ch., T. J. H., \$308.34; Highland ch. S. S., W. S. C., \$3.29; Ninth and O. ch., B. S., \$1.50; Salem ch., Miss P., \$8; First ch., German, Wm., A., \$2; West Broadway ch., S. P. M., \$50; Immanuel ch., Dr. R. G. F., \$36.37; Baptist Tabernacle S. S., G. D. D., Tr., \$15; Highland

Park ch., W. E. M., \$4.51; Twenty-second and Walnut, L. M. R., Tr., \$69.38; Third Ave. ch., L. M. R., Tr., \$21.78; Long Run ch., M. B., \$14.50.

Liberty Ass'n—Salem ch., R. H. S., \$6.

Little Bethel Ass'n—Dixon Bapt. ch., G. L. W., \$7.55.

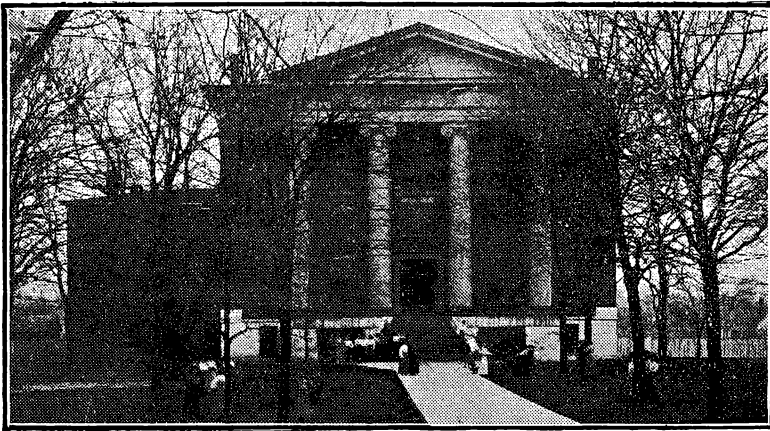
Lynn Camp Ass'n—W. A. N., \$20.20.

Muhlenburg Ass'n—T. C. B., Tr., \$220.81; Greenville B. S. S., H. C. L., \$8.14.

... BETHEL FEMALE COLLEGE ...

HOPKINSVILLE, KENTUCKY

A BAPTIST SCHOOL FOR GIRLS AND YOUNG LADIES



Faculty of experienced, college trained specialists. Three years of college work in addition to the standard college entrance courses. Modern work and methods in Music, Expression and Domestic Science. Large campus and beautiful classic building. Home life of pupils, not excelled in any College in the South. High School graduates will find here an opportunity to continue their work for several years at a nominal cost. 58th year begins September 6th. For catalogue address.

H. G. BROWNELL, President.

Founded in 1874 **CLINTON COLLEGE** **A Flourishing School**
Coeducational **Personal Attention**

Motto: Character and Scholarship.

Fourteen well trained instructors. Students from eight States and two foreign countries. Beautiful campus of twelve acres, shaded with large trees. Well appointed buildings, modernly equipped.

Offers courses leading to degrees A. B. and B. S. Superior advantages in Music (Piano, Voice, Violin, Organ, Guitar), Expression, Art, Normal, Bible, Academic, Book-keeping, Stenography, Typewriting and Elementary Agriculture.

Located in one of the most inviting towns of the country, noted for its schools, health, beauty and refined people. **NO SALOONS.**

Expenses very moderate. Extra inducement offered in connection with one of the specialties. Write Immediately for catalogue to **J. A. LOWRY, A. M. D. D., Pres.**

Nelson Ass'n—New Haven ch., J. P. J., \$58.25; River View ch., J. P. J., \$57.10; Belmont ch., M. M. M., \$10.

North Bend Ass'n—Southside ch., F. P. G., \$15; B. F. S., Tr., \$350; Southside ch., W. T. P., \$30.

Owen Co. Ass'n—F. M. G., \$140.

Onedia Ass'n—Onedia ch., J. H. W., \$10.

Ohio Co. Ass'n—Slaty Creek ch., W. M. F., \$10.75; Woodward's Valley ch., W. M. F., \$1.25; Hartford S. S., W. M. F., \$4.31; Narrows S. S., H. C. G., \$2.30; Narrows ch., H. C. G., \$1.29; Bell's Run S. S., L. M. T., \$2.58.

Ohio Valley Ass'n—First ch. S. S., Henderson, Miss. S. E. W., \$14.34; J. W. L., 40c; Sturgis S. S., W. F. M., \$5.

Pulaski Ass'n—G. L. E., Tr., \$100.46.

Russells Creek Ass'n—Greensburg ch., E. F. T., \$35.65; Greensburg ch., E. F. T., \$4.90; Campbellsville ch., M. W. T., \$24.78; Cane Valley ch., D. H. H., \$3.50; Zion ch., D. H. H., \$5.50; Columbia ch., D. H. H., \$5.70.

Severn's Valley Ass'n—Gilead ch., W. T. O., \$10; Wm. W., Tr., \$467.34; Wm. W., Tr., \$200.

South District—Forks of Dix River S. S., J. W. M., \$1.38; Stanford S. S., Mrs. J. D. W., \$5; Shawneerun S. S., C. S., McD., \$2; Harrodsburg ch., Mrs. W. A., \$24.49; Rev. O. P. B., Tr., \$285.20.

Salem Ass'n—Muldroughs Hill S. S., J. L. C., Jr., \$3.

Sulphur Fork Ass'n—Dr. Wm. J. M., Tr., \$415.40; Dr. Wm. J. M., Tr., \$220.70; Dr.

Wm. J. M., Tr., \$100.

S. Union Ass'n—Marsh Creek ch., M. L., \$2; Jellico ch., L. D. A., \$2.02; Red Bud ch., J. M. H., \$5.50; J. M., \$10.50.

Shelby Co. Ass'n—Pleasureville ch., J. T. M., \$115; Pleasureville S. S., J. T. M., \$3; Buck Creek ch., J. T. M., \$21.07; Buck Creek S. S., J. T. M., \$4.22; Croppers, J. T. M., \$6.25; Little Mt. ch., J. T. M., \$23.58.

Simpson Ass'n—Franklin S. S., J. H. C., \$11.32.

S. Cumberland River Ass'n—L. P. B., \$2.15.

South Ky. Ass'n—D. S. Riffle, \$54.30; Double Springs S. S., J. M. R., \$2; Liberty ch., J. L. A., \$5.

Ten Mile Ass'n—J. W. W., \$7.60; J. T. P., \$337.35; Forks of Elkhorn S. S., Miss J. W. \$1.50; Dry Ridge S. S., Miss B. B., \$5.

Tate's Creek Ass'n—J. E. C., \$44.75.

Three Forks Ass'n—Leatherwood ch., A. J. S., \$10; W. D. P., \$26.50.

Union Ass'n—C. M. J., \$678.32; Richland S. S., R. G., \$3; Cynthiana S. S., C. M. J., \$10.

Upper Cumberland Ass'n—Trace Branch ch., J. K. S., \$5; Four Mile ch., J. K. S., \$3.70.

Whites Run Ass'n—Warsaw ch., D. G. S., \$16.35.

Wayne Co. Ass'n—J. H. C., \$30.35; Monticello ch., J. H. S., \$14; Steubenville S. S., E. C., \$2.06.

(Continued next issue)

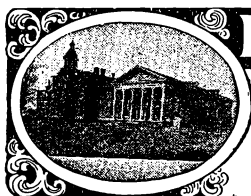
The Southern Baptist Theological Seminary

LOUISVILLE, KENTUCKY.

Next session of eight months opens October 1st. Excellent equipment; able and progressive faculty; wide range of theological study. If help is needed to pay board, write to Mr. B. Pressly Smith, Treasurer of Students' Fund.

For Catalogue or other information, write to

E. Y. MULLINS, President.



Liberty College FOR YOUNG LADIES
ESTD. 1874

A SELECT AND HIGH GRADE SCHOOL

Modern equipment. Laboratories. Steam heat. Libraries. Gymnasium. Delightful climate. School opens Sept. 14th. Send for catalog.
R. E. HATTON, Ph.D., President. REV. G. M. BUSH, A. M., Associate Pres-
GLASGOW, KENTUCKY.

A CHAPEL FOR PATRONS



LEE E. CRALLE

Funeral Director

S. W. Cor. 6th and Chestnut Sts.
Telephone Main 430

LOUISVILLE, - KENTUCKY

Home Phone 8700

Cumberland Main 1041-Y

Office Equipment Co.

Incorporated

Modern Office Devices

Office Supplies

125 S. 4th Ave. Louisville, Ky.

Home Phone 351 Correspondence Solicited

BLUM ART GLASS CO.

INCORPORATED

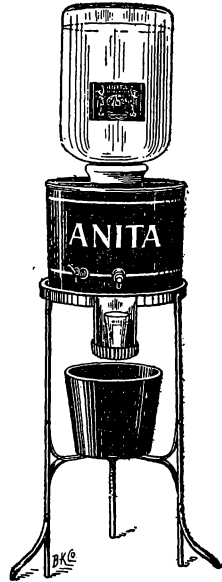
Maker of Church Windows

640 Third St. Louisville, Ky.

“ANITA”

AMERICAN LIGHTEST WATER

Always Pure, Fresh & Invigorating



THE BEST COOLER ON THE MARKET

Anita Spring Water Co.

INCORPORATED

PHONES { Home 4520
Cumb. M. 1468-A LOU., KY.

-----WE ARE-----

MANUFACTURERS OF MONUMENTS

Of High Class, But Moderate Prices
Peter-Burghard Stone Co.

SALESROOM
317 W. Jefferson St.
PLANT
13-14 Maple St. Louisville, Ky.

DO YOU BELIEVE IN CHRISTIAN EDUCATION?

Are You a Baptist? Is it worth anything to you?

To have in Kentucky a Baptist College equal in rank to the best Colleges in any state?

IS IT WORTH ANYTHING TO YOU

To have your sons and daughters educated in a College distinctively Christian and under men and women loyally devoted to the Denomination to which you belong.

The Baptists of Kentucky have just given liberally of their money to Georgetown College and \$10,000 additional endowment have been raised. This means increased facilities, better equipment, larger teaching force and improvements along many lines.

The College now asks the Baptists for their sons and their daughters that it may fulfill the high mission to which it has been dedicated.

FOR INFORMATION OR CATALOGUE WRITE TO

E. B. YATES, Secretary : : Georgetown Ky.

BETHEL COLLEGE

A BAPTIST SCHOOL FOR YOUNG MEN.

The only college in the State west of Lexington doing what is officially recognized as standard college work. Accepted for membership in the Association of Kentucky Colleges and Universities.

LOCATION—Beautifully wooded campus adjoining Russellville, county seat of Logan county, Kentucky. Distinctly moral atmosphere.

EQUIPMENT—Endowment constantly on increase. Five buildings, each well adapted for special purpose. Library containing 7,000 volumes. Laboratories with every convenience for experimental work. Men's dormitory and dining hall with up-to-date accommodations for 100 students. Two literary societies, each with well furnished hall.

Our attractive literature will interest you and your boy.

COURSES—Choice of courses leading to B. A. and B. S. degrees. Also advanced courses with Master's degrees. Business training, including typewriting, stenography, bookkeeping, letter-construction, handwriting, punctuation, etc. Academy department for young students. Training in public speaking.

Expenses moderate. For any information address.

F. D. PERKINS, President

Box 333, RUSSELLVILLE, KY.