

Vol. XII.

No. 5.

# Kentucky Mission Monthly

**OFFICIAL ORGAN OF KENTUCKY BAPTISTS**

*Entered Feb. 5, 1903, at Louisville, Ky., as Second-class matter, under act of Congress, March 6, 1879.*

SEPTEMBER, 1912

25 Cents a Year

W. D. POWELL, - - - - - EDITOR  
LOUIS ENTZMINGER, - SUNDAY SCHOOL EDITOR  
MISS E. S. BROADUS, - EDITOR WOMAN'S DEPT.  
A. E. WOHLBOLD, - - - BUSINESS MANAGER

**General Association of Baptists in Kentucky  
Officers**

C. M. Thompson, Moderator F. D. Perkins, Asst. Moderator  
M. E. Dodd, Asst. Moderator John L. Hill, Sec'y. A. E. Wohlbold, Asst. Sec'y.

## YOUR NEED

A Great Every-Member Campaign for State  
Missions, Sunday School Missions  
and Church Building.

## OUR NEEDS

Sept. 15th to close our books free from debt Oct. 31st:

State Missions, - - -	\$21,000.00
Sunday School Missions -	2,000.00
Church Building - -	6,000.00
Subscriptions to Ky. Mission Monthly,	745

Published Monthly at 205 East Chestnut St., Louisville, Kentucky

# GEORGETOWN COLLEGE

The oldest Baptist College in the South - owned and controlled by the Baptist Education Society of Kentucky. Georgetown is a modern, standard college for young men and young women.

## LOCATION

Georgetown is a beautiful little city in the Blue Grass region of Kentucky; accessible, healthful and morally wholesome. It has a thoroughly filtered water supply - beautiful churches, of all the evangelical denominations - and no saloons.

## FACULTY AND EQUIPMENT

The College has seven large buildings equipped with all the modern conveniences; a strong Faculty of trained and experienced specialists, who keep in close and personal touch with all the students. All the regular academic degrees are conferred and its graduates receive full recognition in all the great universities and women's colleges in the country.

## PHYSICAL EXERCISE

A splendid Gymnasium and fine Athletic Field afford fine opportunity for physical training; and both out-door and in-door sports, under competent and well-trained physical directors for both young men and young women.

## SCHOOL OF MUSIC

An especially strong Musical Faculty offers thorough and intelligent instruction in the various departments of music, including Musical Theory, Pianoforte and Voice Culture. There are also good departments in Expression and Art.

## THE DEPARTMENT OF EDUCATION

Especial attention is given to the training of teachers, and to securing good positions for all graduates and students prepared to teach.

The Department of Bible and Sunday School Pedagogy seeks to train all the students for effective service in the Sunday Schools and other departments of Church work.

WRITE FOR CATALOGUE AND  
FULL INFORMATION, TO

**ARTHUR YAGER, President**  
**GEORGETOWN, KENTUCKY**

# ROCK ISLAND LINES

**California    Oklahoma    Arkansas    Louisiana**  
**Colorado    Kansas    Texas    Nebraska**

Route of the luxurious Golden State Limited to California every day, all the year round, from St. Louis and Chicago via El Paso Short Line, route of the lowest altitudes—NO EXTRA FARE.

## THE COLORADO FLYER

Every morning from St. Louis to Denver, Colorado Springs and Pueblo—an electric lighted train of perfect comfort. A delightfully picturesque ride to Kansas City, thence over the short route to the Rockies, make a trip on Rock Island trains a part of your vacation. Just a night on the way. Modern Pullmans, dining and observation car.

## THE ROCKY MOUNTAIN LIMITED

Every morning from Chicago; and other fast daily trains from St. Louis, Chicago, Omaha, Kansas City, St. Joseph and Memphis for Colorado, Yellowstone Park and the Pacific Coast. Our booklets, "Under the Turquoise Sky" and "Little Journeys in Colorado", are free for the asking.

If you are going anywhere to the West, write for detailed information as to rates, stop-overs, etc., to

**H. I. McGUIRE**  
**District Passenger Agent**  
38 East Fourth Ave.                      CINCINNATI, OHIO

# The Kentucky Mission Monthly

"LET HIM THAT HEARETH SAY COME"

VOL. XII.

SEPTEMBER, 1912

No. 5.

## THE GIVING CHURCH IS THE GETTING CHURCH.

God gives Himself in order to make man holy. That is the meaning of the Cross; it is the love of God dying in order that man may live a deep, rich, glorious life. Self-sacrifice, then, is God's programme, and when a man bridle and curbs his selfishness he begins to work according to God's plan and not his own.

## GOD IS WILLING.

God is willing to give to any church the spiritual blessing for which it is willing to pay the cost. The windows of heaven open on this side, and our selfishness is like a heavy piece of furniture thrown against them which keeps them shut, but the moment we put conscience into every act of our religious worship and sacrifice into every detail of our daily life, the obstacle is removed, the window flies open, and the blessing comes.

## SEPTEMBER ASSOCIATIONS.

Their age, average gifts per member for missions, total average contributions per member to all objects:

Name	Age	Missions per member	Contrib'tns per member
Bay's Fork	64 yrs	\$0 07	\$ 1 74
Boone's Creek	89 yrs	55	7 30
Boonesville	42 yrs	00	20
East Union	32 yrs	77	2 63
Filkhorn	127 yrs	77	11 09
Freedom	71 yrs	09	4 36
Greenville	24 yrs	00	03
Land Mark	15 yrs	00	41
Long Run	109 yrs	1 88	12 98
Lynn	56 yrs	12	93
Nelson	63 yrs	66	4 04
North Bend	109 yrs	83	6 04
Owen	32 yrs	09	1 25

Rock Castle	41 yrs	01	77
Severn's Valley	34 yrs.	07	3 42
S. Cumberland	70 yrs	01	3 67
South Union	97 yrs	00	04
Sulphur Fork	87 yrs	50	33
Ten Mile	81 yrs	24	2 69
Warren	21 yrs	08	3 86
Wayne County	9 yrs	02	16

## PARSONAGES.

Kentucky white Baptists have 77 parsonages and their value, located in Associations as follows:

Bethel, 11, \$24,600; Blackford, 1, \$1,200; Bracken, 4, \$5,500; Breckenridge, 1, \$1,200; Campbell Co., 1, \$2,400; Central, 2, \$3,200; Concord, 2, \$10,500; Daviess Co., 2, \$7,000; Filkhorn, 9, \$36,800; Franklin, 1, \$2,000; Gasper River, 1, \$1,000; Goshen, 1, \$1,200; Graves County, 1, \$5,000; Greenup, 3, \$700; Logan, \$2,500; Long Run, 5, \$11,000; Lynn Camp, 1, \$500; Mt. Zion, 1, \$3,500; Muhlenberg, 1, \$2,000; Nelson, 3, \$4,050; North Bend, 1, \$1,700; North Concord, 1, \$500; Ohio Valley, 1, \$2,500; Pulaski County, 1, \$3,000; Russell's Creek, 1, \$2,000; Simpson, 3, \$9,000; South District, 2, \$3,500; South Kentucky, 1, \$1,500; Sulphur Fork, 2, \$4,500; Tate's Creek, 1, \$4,000; Warren, 2, \$5,500; Wayne County, 1, \$1,000; West Kentucky, 4, \$7,000; West Union, 1, \$2,500; White's Run, 1, \$1,500.

## THE BOOK HAS COME.

And its name, "Primacy of State Missions," Editors Southern Baptist Convention State Secretaries.

Not since Bunyan's Pilgrim's Progress was printed has there issued from press a more powerful presentation. Bunyan pictured the poor sinner's path from the City of Destruction to the Celestial City, the myriad minded State Secretaries portray the progress of Baptists from the dangerous

bondage of sleep and sloth to the freedom of safety and success. No feature of suggested effort has been omitted, while much of the material is for the pastor and Sunday School superintendent, there are ample supplies set apart for the deacons, the laymen, the women, the young people and for all who love the Lord.

Its style is fascinating, and so forceful you can feel the heart throbs of the veterans who wrote from their rich experiences.

If any one thinks this an extravagant review of a remarkable book, read it and if you do not assent you are entitled to your money back. One miracle is the cheapness of the volume, 194 pages, strong paper, dark green cloth binding, gold lettered—a regular \$1 book, yet it sells for 35 cents.

THOS. D. OSBORNE.

The Secretary sorely regrets his inability to reach each Association. He requests the friends of missions to thoroughly discuss each phase of this absorbing theme and to stress State Missions. The fall is always a time of grave concern. Large amounts must be gathered and sent in for State Missions, Sunday School work and Church Building before October 31st. Earnest prayer must be offered, the subject must be presented in a stimulating and informing manner, literature must be distributed bearing on the question and a contribution solicited from each member of the church.

During the past month we attended Franklin, Ohio River, Salem, Central, Breckinridge, Union, Baptist, Bell County, Elkhorn and Ten Mile Associations. Franklin shows vigor and growth. Ohio River moves forward grandly. Salem, one of our oldest Associations, takes on new life. Central means to enlarge her activities. Breckinridge reports considerable progress. The women are live workers and loyally stand by our State work as all of our W. M. U.'s should do. Union gives signs of marked improvement. The women work faithfully. Baptist Association has helped us nobly to establish the work in Pikeville. They will continue to aid that work and help us at Whitesburg, in Letcher county. In Bell county the interest seemed to be improving. They gave us an offering for church building.

## ... EDITORIAL ...

W. D. POWELL ..... Editor

### GIVE STATE MISSIONS RIGHT OF WAY.

W. D. Powell.

State Missions should justly claim the prayer and thought of pastors, churches and mission societies during September and October. The demands on us are imperative. Our missionaries have toiled faithfully throughout the year and must be paid in full. The banker showed faith in our brotherhood by advancing the money needed to meet the monthly bills. We are placing great emphasis on aiding discouraged and dispirited country churches and our success has been most gratifying.

Ninety per cent of our preachers come from the country churches. The best workers and givers in our city churches come from the country. We must enlarge our country work. Our fiscal year closes October 31st.

### THE RESULT OF DELAY.

A party in Nashville had agreed to give thirty thousand dollars to education and the very day the party dressed to go and sign up the papers he dropped dead.

A lady did not wish her property to go to certain parties and decided to give it all to denominational work. Everything was arranged satisfactorily but she delayed from day to day to sign the papers. The other day she expired suddenly and now the property will go to the very ones she did not wish should have it.

Be wise. Act promptly. Arrange with us to pay your monthly annuity while you live and then the use of the property after your death will be settled.

### WHY STATE MISSIONS.

State Missions deals largely with the religious condition of the country people. The prosperity of religion and the stability of our Republic depend largely upon the growth of our country churches. Changed conditions are testing many to the utmost. The automobile carries the well-to-do to the

towns and cities. The Sunday baseball, visiting and indifference interfere with the rest. The State Board undertakes to help, where help is needed, strengthening the weak places and stimulating the discouraged and dispirited. We have had splendid success. Churches have been grouped, parsonages have been built and many of our best preachers will be found in country pulpits. Help us to enlarge this work.

#### A CALL TO OUR PASTORS.

Our fields give promise of abundant harvests. The trains are well filled which ever way we may travel. We have every indication of prosperity. The time has come when amounts must be raised to support State Missions. The Secretary must look to God and the pastors for help. Our sincere desire is to make this a notable year in our history. We take the pastors into our confidence, we rely on them and they have never failed us. They must organize and make a heroic effort to save the situation.

#### WHERE DO OUR LEADERS COME FROM.

In the main they come from our country churches. The mainstays in our city churches were country reared. We must not allow our country churches to languish or decay. The facts show clearly that State Missions have more to do with the vitality and success of rural churches than all else combined. It is foolish and even criminal to neglect State Missions. Baptist churches are dying in those States where State Missions receive meager support. John R. Mott wisely says: "The work of the country churches must be carried on with efficiency and power in order to insure the raising up of sufficient Christian forces to cultivate the city fields." State Missions deserves large gifts during September and October.

The State Board of Missions earnestly requests each pastor to kindly keep State Missions prominently before his people during September and October, and not allow special appeals to come in on the time allotted to our State work, so as to interfere and weaken an interest that ought to be

dearer than every other—caring for the destitute and needy in Kentucky.

Do not suffer the glamor of the far-away to make us blind to solemn duties to those near at hand. Let there be fairness to all the interests of Christ's cause.

We have obligations at the bank and obligations to our missionaries which must be met in less than sixty days. The Corresponding Secretary relies confidently on the pastors to take care of the interests of State Missions. Large and worthy gifts must come from every part of the field. The outcome gives us great concern. Our State Board realizes that we must place even greater emphasis on our country work.

Five Associations have appealed to us in the past ten days to help them save the decadent churches in their territory. Our co-operative work with District Associations has given gratifying results. The State Board has yielded to other interests, but during September and October State Missions must have right of way. It is unfair to allow special appeals to intrude themselves to the injury of our State work.

Our women in Kentucky love the lost souls in our territory. Our W. M. U.'s are working royally to raise an increased amount for State Missions. If they fail to do so we may close our year with an embarrassing debt. We urge every W. M. U. to pray for State Missions, Sunday School and colportage work and our Church Building enterprise.

A few years ago the women of North Carolina gave only \$2,000 to State Missions. Last year they gave \$8,000. Let our Kentucky women do likewise and at the same time increase their gifts to other objects. The Baptists in Kentucky and North Carolina have about the same number of members. We look confidently to each W. M. U. to give worthily to our State Mission cause. Such a course will be well pleasing to Him who notes our gifts.

The result will be disastrous unless our pastors and churches give State Missions cordial and substantial support for the next fifty days.

### OUR SUNDAY SCHOOLS TO THE RESCUE.

During the month of September every loyal Baptist Sunday School will make a worthy offering to our Sunday School work. We have five Sunday School men, all doing splendid, effective work. They take no collections, but they perform the task assigned them. It has placed our State in the forefront of all the States in the South. We appeal to pastors, Sunday School superintendents and the friends of our Sunday School work to see that liberal gifts are made and forwarded promptly to W. D. Powell, 205 East Chestnut street, Louisville.

Sunday School work is at the basis of our mission work. The success of our Sunday School work in each church has much to do with the progress of our denomination. The accessions to our churches come largely from the Sunday School. Will you help us?

The new book on "The Primacy of State Missions," by the State Secretaries of the South, is highly commended by competent judges. It should be in the hands of every pastor, missionary, mission study class, W. M. U. and Philathea and Baraca Class.

It is a marvel of cheapness. It has the material and workmanship of a dollar book and sells for thirty-five cents and postage, seven cents. Send us your order.

The W. M. U.'s in Kentucky are doing a great work. They deserve the aid and cooperation of all our pastors. I commend to all Miss Hunter, who is visiting the women at the Associations and in the churches. She is a fine worker and is doing much good. She will eventually go as a missionary to China. Our Kentucky women are pushing the question of missions in an intelligent, systematic way. There can be no just criticism on the spirit they manifest. They do violence to no New Testament principle. As Paul says, "They labor with us in the gospel."

The first duty of our laymen is to lead souls to Christ, the second duty is to develop Christian character, and the third duty is to develop church finances.

The State Board, through L. Zarrilli, has been doing some effective work among the Italians and Jews in this city. The past month he visited ninety-four Catholic families, twenty-four Jewish families and eighty-six Italian homes. He feels that the children may and should be reached. Our brother is a faithful and conscientious worker.

We hear words of commendation of the splendid work wrought by Elder James L. Dotson in Freedom Association. He has been undaunted by well nigh insuperable obstacles, but God has given him a glorious victory. He has just closed a meeting in Salem church. There were fourteen additions by baptism and six by restoration. Our brother is not afraid of hard work and he tries to present the whole counsel of God.

**THE  
HENDERSON  
... ROUTE ...  
L. H. & ST. L. RY.  
LOUISVILLE  
TO  
ST. LOUIS  
9:21 Every Night**

For Rates or Further Information,  
Address

**E. M. WOMACK,**  
City Pass. Agt.

**R. F. PENN,**  
Trav. Pass. Agt.

**S. W. Cor. 4th & Main  
LOUISVILLE, - KENTUCKY**

## ... SUNDAY SCHOOL DEPT ...

Louis Entzinger, Editor.  
State Sunday School Secretary,  
205 E. Chestnut St., Louisville, Ky.

### SUNDAY SCHOOL MISSIONS.

Our State Mission Board, through its Secretary, Dr. W. D. Powell, is asking our Baptist Sunday Schools in the State for a contribution to Sunday School Missions before the books close for the year on October 31st. Many of the Sunday Schools are making Sunday, September 15th a special Sunday School mission day. Our Board is very generous to the Sunday School work. With three additional men in the field it will be possible to reach every Sunday School in the State. Many of the Sunday Schools are sending in funds to our Board for the different interests fostered by our organized work. This is well and good, but for the next two months every cent contributed should be made direct to Sunday School Missions for our Sunday School work.

Many of the large Sunday Schools could easily contribute \$100 to this work, at any rate we hope every Sunday School will make a contribution.

Send all contributions to Dr. W. D. Powell and be sure to designate "Sunday School Missions," else our Sunday School work will get no credit.

#### Teacher Training Standing—Five Highest States in the S. B. C., September 1, 1912.

Normal Diplomas—Kentucky, 1,308; Georgia, 1,665; North Carolina, 1,571; Texas, 1,462; Mississippi, 1,163.

Red Seal Awards—Kentucky, 193; Georgia, 147; Texas, 118; Alabama, 113; Tennessee, 106.

Blue Seal Awards—Kentucky, 136; Alabama, 65; Georgia, 64; Texas, 62; Tennessee, 55.

#### Blue Seals Issued in Kentucky During August, 1912.

Rev. C. M. Reid, London, Ky.

Miss Dorothy Brenckmann, Louisville, Ky.

Harman Kimble, Monticello, Ky.

Mrs. Fred Allender, Wilmore, Ky.

#### Normal Diplomas by Associations, September 1, 1912.

Long Run, 316; North Bend, 185; Elkhorn, 157; West Union, 109; Daviess County, 108; Blood River, 65; Bell County, 63; Nelson, 60; Campbell County, 52; Bethel, 50; Pulaski, 47; Wayne County, 46; South District, 44; Ohio County, 43; West Kentucky, 38; Crittenden, 32; Bracken, 31; Ohio Valley, 30; Tate's Creek, 27; Little River, 25; Franklin, 23; North Concord, 22; Ohio River, 20; Concord, 20; Baptist, 17; Enterprise, 16; Sulphur Fork, 16; Boone's Creek, 14; Oneida, 12; Lynn, 11; Liberty, 11; Laurel River, 11; Warren, 11; Graves County, 9; Goshen, 8; Severn's Valley, 8; Simpson, 7; Russell's Creek, 7; White's Run, 6; East Lynn, 5; Union, 4; Central, 3; Bay's Fork, 2; Greenup, 2; Little Bethel, 2; Salem, 2; Three Forks, 1; Gasper River, 1; Freedom, 1; Mt. Zion, 1; Owen County, 1; Muhlenberg, 1; Breckenridge, 1; Ten Mile, 1.

Fifty-four Associations, holding 1,808 Diplomas.

#### EASTERN DIVISION.

Newton T. Barnes, Field Secretary,  
Box 101 Lexington, Ky.

The Eastern Division of Kentucky is composed of the following Associations: North Bend, Ten Mile, Campbell County, Crittenden, Elkhorn, Tate's Creek, Pulaski, Union, Bracken, Boone's creek, Landmark, Booneville, Laurel River, Mt. Zion, South Union, Bell County, Upper Cumberland, Greenup, Enterprise, Three Forks, Oneida, East Union, Irvin, North Concord, Lynn Camp, containing 524 churches, having a membership of 62,596. There are 362 Sunday Schools in this division, 3,162 officers and teachers and 27,184 pupils. 661 Normal Diplomas are held and 36 Blue Seal awards have been given.

#### CENTRAL DIVISION.

J. J. Gentry, Field Secretary,  
205 E. Chestnut St., Louisville, Ky.

This division is composed of the following Associations: Salem, Severn's Valley, Lynn, Liberty, Bay's Fork, Barren River, Freedom, Long Run, Nelson, East Lynn, Russell's Creek, Sulphur Fork, Shelby County, White's Run, Concord, Franklin, Baptist

Central, South District, South Kentucky, Wayne County, Owen County, South Concord. There are 563 churches in these Associations, with a membership of 86,179. There are 387 Sunday Schools with 3,489 teachers and officers and 33,561 pupils in attendance. 627 Diplomas and 73 Blue Seals are held.

#### WESTERN DIVISION.

Leonard Leavell, Field Secretary.  
205 E. Chestnut St., Louisville, Ky.

The following Associations are in this division: West Kentucky, West Union, Graves County, Blood River, Ohio River, Little River, Little Bethel, Ohio Valley, Bethel, Daviess County, Muhlenberg, Ohio County, Blackford, Gasper River, Logan County, Simpson, Breckenridge, Goshen, Edmonson, Warren. There are 595 churches in these Associations, with a membership of 76,536; 447 Sunday Schools, with 3,653 teachers and officers and 33,468 pupils. 503 Diplomas and 27 Blue Seal awards have been received in this division.

Any one desiring work in their community should enter into correspondence with the Field Secretary of their division, who will give the matter prompt attention.

#### TEACHER TRAINING.

##### Enrollment and Graduation.

Dr. P. E. Burroughs made the address and delivered the diplomas to a fine class that recently graduated under the leadership of Pastor J. S. Wilson in the Baptist church at Lagrange. Bro. Wilson and his workers are planning to pursue this course of study and will immediately take up some other book in this course.

Pastor Otis Hughson is leading a class in the Teacher's Training work and many in the class have already received their diplomas. Others will finish soon.

Bro. Willie Harlan has two classes doing Teachers' Training work in the Baptist church at Barlow. A number who have already finished the Normal Manual are now taking the Graded Sunday School. Another class is at work on the Manual.

Bro. Burton Roberts, superintendent Bethlehem Sunday School at Pleasureville, reports a fine class taking up Normal Man.

## BAPTIST BELIEFS

By Pres. E. Y. Mullins, D. D.

CLEAR      CONCISE      CONVINCING  
96 pages.   Cloth.      Price 50c Postpaid

## Brazilian Sketches

BY REV. T. B. RAY, D. D.

New Mission Study Text Book

136 pages. Illustrated

Cloth 50c      -      -      -      Postage 7c  
Paper 35c      -      -      -      Postage 5c

## Modern Baptist Heroes and Martyrs

EDITED BY REV. J. N. PRESTRIDGE, D. D.

One of the greatest inspirational books of  
the day

325 pages      16 full page illustrations  
Cloth \$1.00 net      Postage 10c

#### SUBSCRIBE FOR

## The Baptist World

"That Live Paper"

32 pages weekly, illustrated. The very best medium for obtaining a wide view of Baptist achievement and opportunity. Short, spicy, purposeful stories.

### PRICE \$2.00 PER YEAR

Special contract at \$1.50 PER YEAR on two simple conditions: 1st, that it be paid strictly 12 months in advance, and 2nd, that it be regarded as a continuous subscription from year to year at this price, but with the understanding that it may be discontinued by the subscriber at any time by notifying us and paying arrears, if any.

Baptist World Pub. Co.

Incorporated

LOUISVILLE,      -      -      -      KENTUCKY



ual. Rev. J. H. Burden is pastor of this church.

Bro. W. McMillan, Union, Ky., reports that six in his class have finished the Manual and are ready for diplomas, and others will finish soon. They expect to have an all-day service September 14th and will give proper recognition to this phase of Sunday School work.

Miss Gertrude Crowder reports a fine class at the Goshen church. Rev. Arthur Dailey is pastor. Miss Crowder is teaching this class.

Mrs. W. C. Surber reports a class of nineteen in the Junction City church taking up the Normal Manual. Mrs. H. C. Bottom is leading this class.

We are delighted with the way enrollments are coming in. An average of a class a day for the first few days in September is fine. Be sure and make all enrollments through our office. This is absolutely necessary that all reports are made through this office. We are anxious to keep this work before Kentucky Baptists. We have no way in the world of knowing about the organization

of classes or the work of individuals unless it is reported to us.

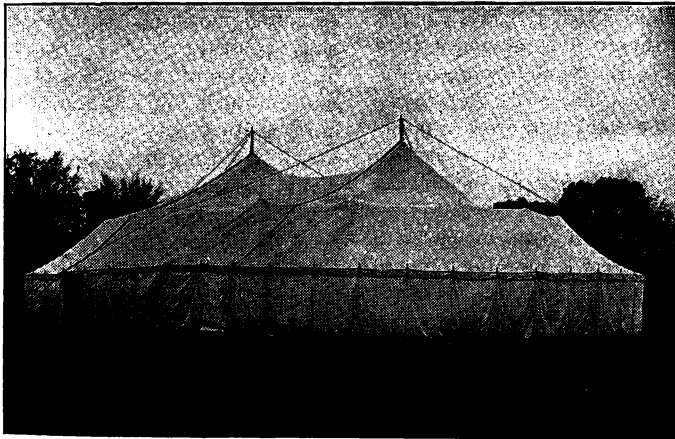
#### TEACHER TRAINING HONOR ROLL.

(All who report to us the enrollment in a class of as many as five in some book in the Teacher Training Course will be placed on this roll.)

Miss Gertrude Crowder, Sanai, Ky.  
Mrs. W. C. Surber, Junction City, Ky.  
E. R. Ranson, Blandville, Ky.  
Willie Harlan, Barlow, Ky.  
Burton Roberts, Pleasureville, Ky.

Russellism marks its slimy trail through our beloved State. The home life of Russell will not bear investigation. We should sow down the State with Haldeman's tract on Russellism. We can furnish them at \$3 per hundred.

The new book, "Primacy of State Missions" (paper cover) and the Kentucky Mission Monthly for fifty cents. Send your order to W. D. Powell.



We make a specialty of renting tents for meetings of all kinds and camping parties

**Louisville Tent and Awning Co., Louisville, Kentucky**

INCORPORATED

## ... WOMEN'S DEPARTMENT ...

### Central Committee.

Miss E. S. Broadus .....Chairman  
1227 Third Avenue.  
Mrs. B. A. Rees .....Treasurer  
2326 Longest Avenue.  
Miss Clifford E. Hunter .....Secretary  
Box 396.

Dear Miss Broadus:

I have just gotten in from a week's field trip in connection with the meeting of the Bell County Association. On the way to Middlesboro I stopped in the South District Association for two days to meet engagements which Mrs. McClary had made for me in Junction City and Lancaster. We organized at both churches, so there are two new societies to report to you. Mrs. McClary and the ladies in the Stanford society are very busy planning for their all-day missionary meeting September 26th. They are making a special effort to have a number of special representatives from every church in the Association as well as delegates from the missionary societies, and hope in this way to interest the women in the churches where there are no societies.

I spent three days in Middlesboro, and went out to the meeting of the Bell County Association from there. The women's work in Bell county is entirely undeveloped and may take years of patient work before we see much fruits, but I think there are possibilities of good work there and hope we have made a beginning toward developing it. Three of the ladies from the Middlesboro society went to the Association with me and together we had a meeting out under the trees for the women, and tried to explain the W. M. U. work. Representatives from three of the churches asked for literature to be sent them and I am hoping to hear of one or two new societies as a result of the meeting. It was a pleasure to meet with the Middlesboro society for the program on Missionary Training. Of course I took the opportunity which they gave me to talk about the Training School, for I believe in it so heartily and more and more I realize the great value of the two years which I spent there. It is always a pleasure to try to tell the women what an opportunity they

have given to us in the establishment and maintenance of our Training School.

On the way back to Louisville stops were made with the societies in Corbin and London. Together we talked over the work and gained a clearer idea of some of the detail plans of the work as well as the points of special emphasis this year. Both societies seem to feel the responsibility of doing something toward training the children, and I hope we are going to hear of Sunbeam Bands organized there during the fall. Another thing which delighted me very much was the fact that the women of both of these societies are planning to see that the W. M. U. work has some presentation at the Association in a meeting for ladies. If it is not possible for me to go back to them for their meeting they will take the responsibility of the work.

At the end of my first month of field work I feel very much encouraged for everywhere that I have met with the ladies in churches having no organization they have seemed so ready to hear about the work and to take it up. Where I have met with women in the societies they have been equally responsive to joining with the Central Committee in aggressive work in the churches around them. This to me is the sign of greatest encouragement, for with the women of each society awake to the opportunity and responsibility of reaching out into the towns and churches around them who can estimate our growth in new societies within the next year? I did not hesitate to tell them if they would arrange meetings with the women in four or five churches the Central Committee would send me there for as much as a week to help in reaching the churches which it was too inconvenient for them to visit.

I shall be in Sulphur Fork Association September 9-16, and expect to have a busy week's work, for Mrs. Pearce has made all arrangements ahead so as to keep me in the field the entire time and make my visit reach as many of the churches as possible.

CLIFFORDE E. HUNTER.

After helping in the field work during August, on September 1st Miss Hunter took charge of the office work also, and will be our regular secretary for a year at least. Miss Webster has resigned, having other

duties in view, and we are very sorry to lose her valued assistance. In these few months she has shown great enthusiasm and intelligent interest in missions, and also diligence and system in the more tedious labors of bookkeeping and reporting. In all the disadvantages we have labored under from the necessity of frequent changes in the secretaryship we have been fortunate in the quality of workmanship and the characters of the workers. We are fortunate also in having Mrs. B. G. Rees as treasurer, ever ready to advise and direct the secretary, competent to do so from her long connection with the Central Committee, and her former occupation of the secretary's place, as well as her keen intelligence and devotion to the cause.

---

#### OUR MISSION FIELDS.

Have you subscribed and sent on your 20 cents for the year's issue of this Mission magazine, so indispensable in conducting your meetings? Remember no free copies will be sent out hereafter, and your society will suffer if you are negligent in this matter. Send it with other money to our Secretary, Box 396, Louisville, Ky., so we can know how many of our societies are subscribing. Or put the 20 cents into the envelope sent out for this purpose by the W. M. U. Literature Department, 15 W. Franklin street, Baltimore, Md.

---

#### THE COUNTRY CHURCH

Is the subject for study in our societies during September. Many of us have tender memories of some church in the country where we used to go when children, and where good Christian people gathered because they loved the Lord. Fervent prayers were offered by some of those old brethren, and hearty singing testified to their enjoyment of the worship. From such churches a majority of our ministers have come, and of those who are the mainstay of town and city churches. And we long to see more of them equipped with Woman's Mission Societies. There are difficulties in the way, bad roads, lack of conveyance, lack of time and of domestic help; but these may be overcome. On the other hand, these ladies do not have so much to compete with as do those in town, where countless engagements

take up time, clubs, lectures, entertainments of many kinds, door bells ringing by all sorts of people; but after all, where there's a will, there's a way. Here are some experiences of Georgia women. One says: There is no need to be without a missionary society, no matter how thinly settled or poor financially. Our little church is away back from railroads, and in a section mostly inhabited by tenants. When a missionary was sent out to organize a society anyway we fought it to the last. Not because we objected to the work, but we didn't feel we could carry it through successfully, nor could we in our own strength. We are so grateful to the Lord and to the good women who were so interested in us as to cause our eyes to be opened. Also for the help and interest of our pastor. We organized with five members, and in six months had twenty-five women, willing and ready to work, realizing that God demands a per cent of their income. In six months we have accomplished more than we expected to do in a year. We will meet our apportionment, have given to church aid, to the poor and the unfortunate, and will do more. We are happy in our work, and feel it is the greatest blessing that ever came into our lives. If you want a live church, prayer meeting and Sunday School, have a Woman's Mission Society.

Another tells of having all the societies to meet at the same time, W. M. U., Y. W. A., R. A. and Sunbeams. They take turns in conducting opening and closing services, then each organization retires to a separate part of the church for business meetings. This plan enables the whole family to come at one time, a great convenience in the country, and the fathers have their own class, and put their contributions into the Sunbeam's basket.

---

Miss Hunter is planning to visit Pulaski and Wayne County Associations the latter part of September, and White's Run in October. She will have some days in Louisville between her different engagements, to answer letters and keep up with the office work. November 15th is the time of the General Association meeting and Madisonville the place. Every society should arrange to send a delegate.

One of our faithful vice presidents has been passing through deep waters. Mrs. Hinkle, of Bardstown, lost her father in May, her daughter was long ill of typhoid fever, and then her husband died after many days of illness. A new home has been offered her as city missionary at Clifton Forge, Va. We give her up with great regret, but with many blessings upon her new work. Miss Fanetta Sayers, of Deatsville, will finish out the year's work in Nelson Association.

Remember to give to State Missions in September and fail not in giving to Foreign and Home Boards every month. Our Training School contributions should be largely increased and that speedily.

E. S. BROADUS.

We have in our churches builders, splitters and shirkers.

#### RECEIPTS FOR AUGUST.

Barren River Ass'n—R. H. S., Tr., \$142.38.  
 Baptist Ass'n—Battle ch and S. S., R. E. B., \$5.  
 Bay's Fork Ass'n—New Salem ch., N. T., Ch. Tr., \$12.  
 Bell Co. Ass'n—W. D. P., \$10.32.  
 Blood River Ass'n—Murray ch., J. L. P., \$35.  
 Bethel Ass'n—Dripping Spring ch., W. D. P., \$18.42; H. H. A., Tr., \$609.51.  
 Book Sales—C. M. T., \$21.59; L. B., W. D. P., 25c; E. V. R., \$1.25; L. V., \$9; Rev. C. W. K., \$22.88; L. V., \$14; J. J. G., \$35; A. E. A., \$11.55; L. V., \$10; Dr. R., 10c; B. R., \$4.40; Mrs. E. W. S., \$5.25; W. D. P., \$5.75.  
 Bracken Ass'n—Lewisburg ch., T. F. G., \$49.50; Ewing ch., \$10.70; Locust Grove ch., \$16; Dover, \$8.25; May's Lick, \$15; Pleasant Valley, \$6.75; Oak Ridge, \$3.70; Mt. Olivet, \$6.78; Mt. Pisgah, \$8.55; Sharpsburg, \$45; Two Lick, \$76.53; Two Lick ch., J. P. J., \$93.45; Two Lick W. M. U., J. P. J., \$5.  
 Breckenridge Ass'n—Goshen ch., Dr. R. T. D., \$4; Hite's Run ch., J. H. B., \$3.  
 Campbell Co. Ass'n—Dayton ch., R. R. McM., \$20.98; Newport S. S., Miss L. W., \$1; Bellevue ch., W. A. M., Tr., \$12.42; Lick-

ing Valley ch., A. M. M., \$5.03; Licking Valley S. S., \$1.36; Mentor S. S., \$5.15; Mentor ch., \$9.51; Persimmon Grove ch., \$5; Persimmon Grove S. S., 49c; First Twelve Mile ch., \$5.13; Flag Springs ch., \$4; Flag Springs S. S., \$1.43; Pleasant Ridge ch., \$27.03; Pleasant Ridge S. S., \$9.75; Second Twelve Mile ch., \$11.75.

Central Ass'n—Lebanon B. Y. P. U., J. O. B., \$10; J. O. B., Tr., \$176.38.

Crittenden Ass'n—Short Creek ch., T. J. B., \$25.95; Pleasant Ridge ch., \$14; Grassy Run ch., \$7.

East Union Ass'n—Rev. J. M. C., \$5.00.

Elkhorn Ass'n—First ch., Lexington, Dr. J. W. P., \$20; Midway ch., M. T., Tr., \$18.29; South Elkhorn ch., \$27.50; Calvary ch., Lexington, \$32.20; Fifth St., ch., Lexington, \$60; Hillsboro ch., \$38.50; Glenn's Creek ch., \$4; Cane Run ch., \$18.50; Mt. Freedom ch., M. T., Tr., \$11; Silas ch., \$24; Midway ch., \$20.65.

Enterprise Ass'n—Inez ch., G. P., \$1.15; Paintsville ch., J. S. P., \$38.20; Mt. Beulah ch., G. P., \$5.

Freedom Ass'n—Salem ch., Miss S. McM., \$41.75.

Goshen Ass'n—Caneyville ch., W. B. M., \$15.

Graves Co., Ass'n—Mayfield ch., W. M. W., \$116.50.

Greenup Ass'n—Louisa S. S., Miss A. J., \$7.51; Pollard ch., F. E. M., \$27; Pollard, F. E. M., \$10; Glenwood ch., Z. J. A., \$26.43.

Receipts for Journals crowded out for lack of space.

Individuals—D. A. D., 78c; Miss E. B., \$1; Rv. P. H. K., \$25; Rents, R. B., \$16; Home Mission Board, \$200.

Kentucky Central Committee—M. W., \$282.43.

Liberty Ass'n—J. L. B., \$21; Edmontons ch., J. W. B., \$3; Cave City S. S., C. S. F., \$2.07.

Little River Ass'n—Locust Grove ch., L. H. A., \$17; Cumberland ch., W. A. M. W., \$22.70; Golden Pond ch., W. A. M. W., \$2.60.

Logan Co. Ass'n—D. P. B., \$77.34; Antioch ch., D. P. B., \$14.25; Mt. Pleasant ch., \$24.11; Mt. Tabor ch., \$5; Elk Lick ch., \$5.16; I. N. Yohannon Fund, D. P. B., \$48.12.

Long Run Ass'n—Immanuel ch., Dr. R. O. F., \$42.94; Beechland ch., E. J. B., \$4.36;

# Add These Books to Your Library

## GOD'S PLAN WITH MEN

By T. T. Martin, Evangelist

### An Interpretation of Salvation

Contents:

- I—Sin and Its Punishment—God's Justice—Degrees in Hell.
- II—Sins Never Excused, nor the Penalty Ever Remitted without Redemption.
- III—Jesus the Christ as Sin-Bearer—God's Justice and Love.
- IV—The New Relation—The New Motive.
- V—The Sins of God's Children—Forgiveness Chastisements.
- VI—Rewards—Degrees in Heaven.
- VII—How to be Saved—Repentance and Faith.
- VIII—The Meaning of "Believe On" or "Believe In" Christ.
- IX—External Life the Present Possession of the Believer.
- X—Development of Character in the Redeemed.

Price - - - \$1.00 Postpaid

## KNOWING THE SCRIPTURES

The second edition of Dr. A. T.

Pierson's last book now ready

Nearly 500 pages literally packed with help for all Bible readers. Fifty laws of Bible study and examples of each. This work should be in every Christian's Library. It's a book you will need to refer to often.

Attractively bound in cloth with gold stamp  
Net, \$1.00

## The Singular Actions of Consistent Christians or The Nonsuch Professor In His Meridian Splendor

BY REV. WM. SECKER

This is a wonderful book. At whatever page you open it, your eye lights upon pithy aphorisms that combine the sententiousness of Benjamin Franklin with the sweet, holy savour of Samuel Rutherford. It contains hundreds of bright seed-thoughts like this: "This world is very large in our hopes, but small in our hands."

Price 50c

Postage 10c

The former price was one dollar.  
This is the book which Dr. Eaton so highly commended.

## The Greatest Song Book for Baptists

# THE NEW EVANGEL

SHAPED OR ROUND NOTES

Prices each - Cloth	\$0.35 postpaid	Limp	\$0.25 postpaid
" per doz.	" 3.50 not postp'd	"	2.25 not postp'd
" per 100	" 25.00 " "	"	15.00 " "

Send all your orders for books to the

**BAPTIST BOOK CONCERN, Incorporated**

LOUISVILLE, = = = = = KENTUCKY

Twenty-second and Walnut St. ch., L. M. R., \$70.08; Salem ch., Rev. W. E. P., \$2.70; Highland Park ch., A. F. C., \$6.32; Beechmont S. S., E. S. R., \$10; Elk Creek ch., Rev. L. T. W., \$59.15; Little Fork ch., L. Z., \$7.40; Third Ave. ch., L. M. R., \$19.17; West Broadway S. S., \$5; Beechmont ch., W. J. J., Tr., \$10; Immanuel ch., Dr. R. G. F., \$35.03; Jeffersonstown S. S., Mrs. J. C. A., \$6.90; Little Flock ch., Mrs. H., \$13; Knob Creek ch., W. E. P., \$8.50; King's ch., E. C. S., \$103; Parkland ch., L. M. R., \$67.12; Third Ave. ch., L. M. R., \$22.51; King's ch., E. C. S., \$15.16.

Muhlenberg Ass'n—South Carrollton ch., S. P. M., \$42.25.

Nelson Ass'n. Beech Grove ch., H. W. McC., \$9.80; Belmont ch., Rev. L. Z., \$5.45.

North Bend Ass'n—T. M. S., Tr., \$357.54.

Oneida Ass'n—Oneida ch., J. L. P., \$10; Oneida ch., J. L. P., \$10; Oneida ch., L. D. S., \$2.50; Bethany ch., A. J. M., \$5; Fairview ch., A. J. M., \$5.

Ohio Co. Ass'n—Zion ch., J. M. R., \$23.65.

Ohio River Ass'n—Dyer's Hill ch., H. J. R., \$2; Cave Spring ch., W. D. C., \$16.50; Dyer's Hill ch., \$12.17; Walnut Grove ch., \$7.13; Clear Spring ch., \$26.52; Pinkneyville ch., \$13.13; Deer Creek ch., \$7.92; Good Hope ch., \$65.13; Salem ch., \$7.92; Seven Springs ch., \$9.47; Blooming Grove ch., \$23.03; Blackburn ch., \$15.08; Lola ch., \$18.75; First ch., Marion, \$333.36; Sulphur Spring, \$1; W. D. C., Tr., \$41.51; Smithland ch., \$19; First Salem, \$42.79; Good Hope, \$23.25.

Rockcastle Ass'n—Brodhead ch., R. A. B., \$3.44; Livingston ch., R. A. B., \$59.17.

Russell's Creek Ass'n—Greensburg ch., E. F. T., \$41.30.

Salem Ass'n—New Highland ch., J. R. W., \$12; Brandenburg ch., \$19.50; Wolf Creek ch., J. R. W., \$5.40.

Shelby Co. Ass'n—Waddy ch., J. T. M., Tr., \$15.55; Little Mt., \$36.29; Shelbyville ch., \$20.50; Buffalo Lick, \$15.50; Christiansburg, \$22.40; Bagdad, \$5; Burk's Branch, J. T. M., Tr., \$23.20; Shelbyville \$2.25; Clay Village, \$53.50; Mt. Pleasant, \$33.35; Waddy, \$12.53; Little Mount., \$24.42; Christiansburg, \$5.75; Salem, \$75.85; Buffalo Lick, \$11.20; Dover, \$67.44; Beech Ridge, \$5; Buck Creek, \$4.56; Mt. Moriah, \$50.01; Little Mount, \$16.70; Clay Village, \$5.

South District Ass'n—First ch., Danville, E. W. C., Tr., \$106.40; Perryville ch., O. P. B., \$57.65; Mt. Hebron, 65c; Lancaster, \$2.94; Shawnee Run, \$10; Mt. Moriah, \$5; North Rolling Fork ch., J. L. A., \$12.45.

Three Forks Ass'n—Hazard ch., A. S. P., \$10.

Tate's Creek Ass'n—W. A. T., \$85.69.

Union Ass'n—Willow ch., J. P. J., \$72.

West Union Ass'n—J. M. M., Tr., \$21.10; First ch., Paducah, W. W. R., \$50; Blandville ch., J. M. M., \$2.50.

Wayne Co. Ass'n—R. C. K., \$21.

Warren Ass'n—First ch. S. S., Bowling Green, J. W. P., \$13.49.

West Kentucky Ass'n—Clinton ch., W. R. H., \$9.35.

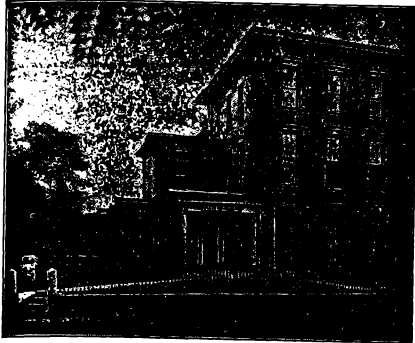
## The Southern Baptist Theological Seminary

LOUISVILLE, KENTUCKY

Next session of eight months opens Oct. 1. Excellent equipment; able and progressive faculty, wide range of theological study. If help is needed to pay board, write to Mr. B. Pressley Smith, Treasurer of Students' Fund. . . .

For Catalogue  
or Other Information, write to **E. Y. MULLINS, President**

—A CHAPEL FOR PATRONS—



**LEE E. CRALLE**  
 Funeral Director  
 S. W. Cor. 6th and Chestnut Sts.  
 Telephone Main 430  
 LOUISVILLE, - KENTUCKY

**MOLL & CO.**

Incorporated

Printers, Binders  
 Publishers

638 Fourth Ave. Louisville, Ky.

Home Phone 351 Correspondence Solicited

**BLUM ART GLASS CO.**  
 INCORPORATED

Maker of Church Windows

640 Third St. Louisville, Ky.

**“ANITA”**

AMERICAN LIGHTEST WATER  
 Always Pure, Fresh & Invigorating



THE BEST COOLER ON THE MARKET

**Anita Spring Water Co.**  
 INCORPORATED

PHONES { Home 4520  
 Cumb. M. 1468-A

Our New Plant, 210-212 Pearl St.  
 LOUISVILLE, KY.

-----WE ARE-----

MANUFACTURERS OF  
**MONUMENTS**

Of High Class, But Moderate Prices  
**Peter-Burghard Stone Co.**

SALESROOM  
 317 W. Jefferson St.  
 PLANT  
 13-14 Maple St. Louisville, Ky.

# BETHEL COLLEGE

RUSSELLVILLE, KY.

ESTABLISHED 1849

Standard work in both preparatory and college subjects.

We believe in educating the whole boy—soul, mind, body.

Bethel College seeks to be a real asset to the Baptist Denomination. Courses in Bible Study, Christian Doctrines, Missions, and all phases of Sunday School work.

We seek to give a young man some practical training for his life work along with his literary education. Thorough courses in Manual Training, Agriculture, Stenography, Typewriting and Book-keeping.

Good equipment. Special attention given to physical culture.

A special endowment fund enables us to extend very liberal assistance to those studying for the Baptist ministry.

For Literature or Information, Address

F. D. PERKINS, President

Box 25

Russellville, Ky.

## A Valuable Book FREE

It tells you how to raise better, bigger crops with less work and more profit.

Write for it TODAY

**T**ELLS you everything you would like to know about field seeds; how to select high-grade seeds, sow, fertilize and harvest Clover, Alsike, Blue Grass, Orchard Grass, Timothy, Red Top and other field seeds in a way that really makes farming pay.

By all means send for it today. It's free. So is our special book on Orchard Grass which you certainly ought to have right now.

Write for both books and name of "Gold Medal" seed dealer in your locality.

**LOUISVILLE SEED CO.**

104 South Second St.

LOUISVILLE, KY.

