

# Kentucky Mission Monthly

**OFFICIAL ORGAN OF KENTUCKY BAPTISTS**

*Entered Feb. 5, 1903, at Louisville, Ky., as Second-class matter, under act of Congress, March 6, 1879.*

DECEMBER, 1912

25 Cents a Year

W. D. POWELL,	- - - - -	EDITOR
LOUIS ENTZMINGER,	-	SUNDAY SCHOOL EDITOR
MISS E. S. BROADUS,	-	EDITOR WOMAN'S DEPT.
A. E. WOHLBOLD,	- - -	BUSINESS MANAGER

**Officers**

C. M. Thompson, Moderator J. W. Porter, Asst. Moderator, F. D. Perkins, Asst Moderator, John L. Hill, Sec'y A. E. Wohlbold, Asst. Sec'y.

**Executive Board**

J. W. Porter Chairman, Lexington, Ky. E. C. Farmer, Rec. Sec. Louisville, Ky  
Thos. D. Osborne, Treas. Louisville, Ky. A. L. Crawley, Asst. Sec. Louisville, Ky

J. A. Booth, Taylorsville	H. A. Porter, Louisville	B. F. Swindler, Carlisle
W. T. Bruner, Louisville	W. W. Landrum, "	F. W. Eberhardt, Franf't
R. L. Carter "	N. C. Shouse, "	E. O. Cottrell, Cloverport
S. J. Cannon "	W. M. Stallings, Smith's Gr.	A. B. Gardner, B' ver Dam
J. C. Greenoe, "	W. M. Wood, Mayfield	M. D. Early, Monticello
J. F. Griffith, "	C. W. Elsey, Cynthiana	W. E. Michell, Adairville
G. W. Argabrite "	T. H. Plemmons, Covingt'n	A. S. Pettie, Owensboro
E. S. Alderman "	W. E. Hunter, Somerset	H. B. Taylor, Murray
G. P. Comer, "	A. Gatliff, Williamsburg	C. M. Thompson, Hopkinsville
Wallace Wear, "	M. E. Staley, Fulton	W. J. Puckett, Cave City

**Baptist State Board of Missions**

Rev. W. D. Powell, Cor. Secretary; 205 E. Chestnut St., Louisville, Ky.  
Louis Entzinger, Sunday School Secretary; 205 E. Chestnut St., Louisville, Ky.

**Kentucky Central Committee**

Miss E. S. Broadus, Chairman; 1227 Third Ave. Louisville, Ky.  
Miss Clifforde E. Hunter, Box 396 Louisville, Ky.

**Baptist Minister's Aid Society**

J. D. Maddox, Corresponding Secretary; 700 Bolivar St., Owensboro, Ky.

**Baptist Education Society of Kentucky**

Rev. M. B. Adams, Corresponding Secretary; Frankfort, Ky.

**Published Monthly at 205 East Chestnut St., Louisville, Kentucky**

# A CHRISTMAS SUGGESTION

## Two Books You Ought to Have

For the Sake of Others If Not For Your Own

### BAPTIST BELIEFS

By Pres. E. Y. Mullins, D. D.

Clear, concise, attractive statement of Baptist Beliefs, including "Liberty of Conscience," "Education," "Missions," and "Social Service" in addition to beliefs usually contained in such a treatise. The New Hampshire Declaration of Faith is printed in the back of the book.

Dr. Strong says: "It fills an empty niche in our literature."

Dr. MacArthur says; "Its sanity of thought is beautifully paralleled by its lucidity of statement."

The Western Recorder says; "We anticipate for it a wide and useful circulation."

If you are a weak Baptist it will help to make you a strong one. If you are a strong Baptist it will make you a stronger one.

Bound in chaste blue cloth with white stamping.

Only 50 Cents Net, Postpaid.

### DOROTHY PAGE

By Eldridge B. Hatcher, D. D.

A charming denominational story upholding the distinctive doctrines of the Baptists in a most direct, interesting and convincing way.

Rev. Dr. Rufus W. Weaver of Nashville, Tenn., a man of fine literary taste and discriminating judgment says: "The presentation of the Baptist position in fictional form reaches and convinces in a way that the controversial sermon never can. The Baptist propaganda requires this type of literature and in 'Dorothy Page' Dr. Hatcher has not only surpassed himself but has set a new standard for all others."

194 pages, printed on high grade paper, bound in dark green silk cloth with white stamping and exquisite portrait of the heroine in colors on the cover. An ornament to any parlor table. Would easily sell at \$1.25, but the price has been placed at

Only 60 Cents Net, Postpaid

**BAPTIST WORLD PUBLISHING COMPANY** Incorporated  
LOUISVILLE, KENTUCKY.

#### Whitesburg, Ky.

Accompanied by Brother A. S. Petrey, the worthy pastor, I spent the last Sunday in November with the brethren in Whitesburg, Letcher County. They have a splendid Sunday School and a magnificent lot on which they will build at once a commodious house of worship. It will be built of pressed brick, and will have a basement and ample Sunday School facilities.

The membership is not large, but they are a consecrated and determined band, and the foundations they lay will be broad and deep for the great work of the cause of our Blessed Master.

The brethren assured me that they would be represented at the Southern Baptist Convention in St. Louis and also at the General Association in Lexington.

#### Pikeville, Ky.

On invitation of Pastor T. J. Rigg, I addressed a large audience on the subject of Home Missions. The Pastors of the different churches were present, and we had a delightful evening. Brother Rigg is getting a good hold on the situation and making his plans for the extension of the Master's work.

The Methodist pastor at Harlan has been borrowing a baptizing suit of Rev. J. K. Smith. The people of the mountains demand immersion as a rule.

Ten Mile Association held an enthusiastic session at Zion. Bro. J. J. Kemper was elected treasurer in lieu of Bro. J. T. Points, who after thirty-eight years continuous service resigned.

# The Kentucky Mission Monthly

"LET HIM THAT HEARETH SAY COME"

VOL. XII.

DECEMBER, 1912

No. 8.

## STATE BOARD DECEMBER MEETING.

There was a large attendance and great interest. All reports were encouraging; receipts the greatest ever; Ohio Valley Institute transfer to the General Association was arranged; Dr. J. H. Dew, of Missouri, but formerly of Kentucky, was chosen Chief Evangelist; Dr. Powell—"well done, good and faithful servant"—was given a month's vacation; churches and Sunday Schools were asked to make special offerings the third and fourth Sundays in January for the cause of education, ten thousand dollars being asked. Harmony and hospitality were at the high water mark. President J. W. Porter was perfect in performance of duty, always expediting business.

### AID GRANTED.

Churches given help on their meeting houses were: Allen, Audubon, Beechmont, Bruner's Chapel, Gatliff, Golden Pond, New Hope, Prestonsburg, Rosine, Steel's Chapel, West Second Church, Somerset, and Whitesburg.

### MISSIONARIES APPOINTED

were as follows: A. A. Adkins, H. T. Abbott, C. B. Althoff, Z. J. Amerson, R. A. Barnes, J. N. Binford, R. E. Booker, B. V. Bolton, J. G. Bow, N. E. Bradford, Webb Brame, J. A. Burns, A. F. Cagle, J. G. Carmichael, E. J. Caswell, L. F. Caudill, W. R. Chick, T. J. Collins, T. A. Conway, J. W. Crow, W. A. Daniel, W. T. Dennington, R. F. Doll, T. C. Duke, J. S. Dunlap, H. M. Eastes, Thomas Murrell, E. B. Farrar, Thomas Foster, F. P. Gates, E. H. Garrett, J. W. Witt, J. M. Gooding, T. F. Gridler, W. M. Hall, Ollus Hamilton, F. Hardin, C. K. Hoagland, E. L. Howerton, A. S. Jeffries, J. P. Jenkins, J. C. Johnson, W. L. King, R. C. Kimble, R. F. Kirby, Miss E. Leachman, Lewis Lyttle, W. W. William, W. H. McCormick, W. N. McCullough, Har-

old Major, A. J. Murrell, B. H. Payne. A. S. Petrey, J. T. Pope, J. M. Price, C. B. Reed, Jr., C. M. Reid, J. P. Reiley, T. J. Rigg, W. H. Setzer, Charles E. Scott, R. L. Shirley, D. K. Slaughter, J. K. Smith Benj. Sargee Frank S. Tolle, J. M. Tolson, Levy Vincent, F. R. Walters, E. J. Weller, W. W. Williams, J. I. Wills, W. A. M. Wood, Standing Committeess chosen were as subjoined:

Sunday School—C. M. Thompson, A. S. Pettie, W. E. Hunter, W. E. Mitchell, M. E. Staley.

Colportage—M. D. Earley, F. W. Eberhardt, J. C. Greenoe, C. W. Elsey, A. Gatliff.

Home Missions—E. S. Alderman, R. L. Carter, E. O. Cottrell, A. L. Crawley, T. H. Plemmons.

Appropriation—W. M. Stallings, J. A. Booth, W. W. Landrum, H. A. Porter, H. B. Taylor.

Evangelism—W. M. Wood, G. W. Argabrite, B. F. Swindler, S. J. Canno W. T. Bruner.

Church Building—Thos. D. Osborne, J. F. Griffith, N. C. Shouse, Wallace Wear, W. J. Puckett.

Rules Committee—A. B. Gardner, W. J. Puckett, W. W. Landrum, E. C. Farmer, J. F. Griffith, G. W. Argabrite, G. P. Comer, B. F. Swindler, H. A. Porter, S. J. Cannon, M. E. Staley.

Executive Committee—W. M. Stallings, J. W. Porter, W. W. Landrum, W. E. Hunter, H. B. Taylor, C. M. Thompson, W. M. Wood A. B. Gardner A. L. Crawley, E. S. Alderman, J. A. Booth, E. C. Farmer, J. F. Griffith.

Publicity—Thomas D. Osborne, A. L. Crawley.

Auditing—E. O. Cottrell, Wallace Wear, R. L. Carter.

Harris Committee—W. W. Landrum, H. A. Porter, J. W. Porter, C. M. Thompson, N. C. Shouse.

(Continued on page 5)

### ... EDITORIAL ...

W. D. POWELL .....Editor

#### THE ANNUAL MEETING OF THE STATE BOARD OF MISSIONS.

A night and a day were spent in duly considering each application. Everything was done in a business like manner.

The crying needs of our field received careful and prayerful attention. Some amounts asked had to be scaled down. Some places we have been aiding became self-sustaining and others promised to do so during the year. Our Board appreciates the growing importance of city missions as well as country and village work. They surveyed the entire field in a spirit of fairness. The Board determined to enlarge our force of workers so as to meet imperative demands from needy points. Send us funds for State Missions. Pastors must enlist more givers.

#### LET US STAND BY OUR WORK.

We have enough enterprises to tax the gifts and sacrifices of our Baptist brethren. We must industriously build on the foundations we have already laid. We must loyally support missions, education and benevolence.

Our denominational papers must be maintained. A wise pastor will preach on these subjects, contribute to them and induce his people to give.

We must be wary of starting too many new things. Support what we have.

#### DOROTHY PAGE.

This is a neat book by Dr. E. B. Hatcher and published by the Baptist World Publishing Company, and sells for 60 cents per copy. It is an attractive story, dealing with distinctive Baptist principles. We predict for it a large circulation.

The workmanship is of such a high order that it will make a capital Christmas present.

We are indebted to the Norton Foundation for two brilliant addresses at the Theological Seminary by Prof Luzzi, of Flor-

ence, Italy, on Modernism. Hundreds of priests in Italy are honestly striving to bring Romanism back to the simplicity and purity of the early faith. They clamor for the free circulation of the Scriptures.

#### OUR COUNTRY CHURCHES.

The strength of the Baptist denomination has always been in country churches. The subscribers to this mission journal, in the main, live in the country. Had we depended on city patronage we would long since have gone out of existence. I dare say the same is largely true of every Baptist paper and journal. There are problems in the city and problems in the country. We have wealth, intelligence and religion in both places. What we need is faithful pastors who will inform themselves and preach on missions and every denominational enterprise and induce his people to give regularly, proportionately and Scripturally.

When shown their duty country Baptists will make all needed sacrifice to support our work and workers. Country Baptists are not stingy.

The Education Board in Texas groans under a heavy debt, which grows larger year by year. Next Sunday a united effort will be made to raise it.

#### FIELD WORKERS.

Our State Board has many Field Workers already under appointment, and many others will be appointed as soon as suitable men can be found and the different Associations manifest a desire for this class of work. It is co-operative work between the State Board and the District Associations for the purpose of developing the backward churches as well as planting the gospel in weak places. There are many Associations in the State where such work would be most beneficial, and if the brethren desire to undertake it, we invite correspondence. Also men of God who desire to engage in some really hard work where all their powers will be taxed at times to the limit, but which will result in the great good and the upbuilding of the Master's Kingdom, will please correspond with us.

A GRATIFYING WORD FROM DR. C. J. ROSE.

Rev. W. D. Powell, Louisville, Ky.:

My Dear Brother: I have your letter of the 5th just received, inquiring about the evangelists which we have borrowed of the Kentucky Convention. So far we are delighted with them. They have struck the key of success from the very first in each instance, and I have heard from each place where they have worked only things to their praise and commendation.

Brother Jenkins has just finished his first meeting, and has sent me \$75 in cash and reports (twenty-two conversions and baptisms, and others interested. He is now beginning in the same city, Akron, with another one of our churches. He has had four manifestations of desire to accept Christ at the very first meeting.

Brother Amerson has just closed his second meeting and has had good success, and the people are loud in his praise. Brother Walters also is just closing his second meeting, and has had good success in these meetings. I have sent these men to hard places, and we do not count their success altogether by the number of converts which they are able to report. The reclaiming of backsliders, the healing of troublesome sores, etc., are among the things to be accomplished in many cases. In other words, I can report to you that so far as we have tried the experiment we are perfectly satisfied.

Yours sincerely,

Granville, Ohio.

C. J. ROSE.

We had a two-weeks' meeting at Summer Shade, in November, which was a glorious victory, resulting in thirteen additions to the church, which gives much strength to this mission point.

T. F. GRIDER.

Jackson, Ky.

On our visit to Jackson, the county seat of Breathitt County, we had the privilege of reaching many of the brethren, and held a council with Pastor Roof. The field has its difficulties, and yet there are evidences of the Master's smile upon the labors of his servant.

The State Board of Missions at the recent meeting, voted the Corresponding Secretary a month's vacation. The Corresponding Secretary realizes the need, but there are so many calls for him to dedicate church houses, that he hardly sees how he can be absent very long from the field. Then, too, the missionaries, colporters and workers will expect their salaries at the end of each month and especially at the end of the month of December when wife and children must have warm clothing and a few Christmas comforts, and we trust that churches and Sunday Schools and Missionary Societies will lovingly remember our State Mission cause and see that we are provided with the funds to meet our obligations through December, January and February to our faithful workers.

We are opening new and important fields and the demands on our treasury were never so great, but we have faith in God and in our brethren and believe they will stand nobly by us.

(Continued from page 3)

NOTES.

Walnut Street did not set a noon lunch for the State Board, but spread a banquet, the silverware shown, the fruit salad was delicious and the service was by wingless angels, the lovely women of the Mother church.

Ohio Valley Institute may be an Orphan's Home more than Aged Minister's Rest.

"Sunday School work," said Dr. Thompson, "will be pressed on our present successful system."

The Appropriation Committee stand with drawn sword to cut down unwise giving.

Home Missions has a strong committee, and will stay in the front.

"Old ministers prefer the family life rather than the Institutional Home Life," urged Dr. Early.

The Rules Committee will perfect the rules.

Evangelism will be advanced as never before.

COLPORTAGE is to be reinvigorated.

Pray for the work.

Thos. D. Osborne.

## BAPTIST EDUCATION IN KENTUCKY.

The Education Society appealed to the recent meeting of the State Board of Missions for aid in their financial straits, and it was decided that on the last two Sundays in January, the Corresponding Secretary and all workers would do their utmost to promote the interests of the Education Society. The third Sunday in January the writer was invited to spend with the brethren at Williamsburg. We trust that much will be accomplished in these two Sundays by the united efforts of the employees of the Education Society and the State Board of Missions. There is no rivalry between Missions and Education. Of course Missions come first, but from the beginning of the work in the United States, Baptists have had due regard to the importance of Education as a most valuable auxiliary.

Rev. Livingston Johnson, Corresponding Secretary of the State Board of Missions of North Carolina, reports the interest in State Missions growing. They closed the year with all debts paid and \$480 in the treasury.

---

 Jenkins, Ky.
 

---

\* It was our privilege to visit Jenkins recently with Rev. J. W. Crow who goes there to enter upon the work at that place and McRoberts. This is one of the finest coal fields in America and the vein of coal is from ten to twelve feet in thickness. A number of mines have been opened and a great quantity of coal is already being shipped over the railroad, which has just been completed. When they have railroad facilities, hundreds of cars will be shipped each day.

The Consolidation Coal Company is erecting the finest buildings for their employees that we have seen. They tendered us the ground on which to erect a church and offer us every encouragement. We are the only denomination that have a man on the field, though the Methodists, Presbyterians and Disciples contemplate placing a man there in the near future. It is certainly a place with vast possibilities.

## A VISIT TO MORGANFIELD.

It was my pleasure and privilege to spend the first Sunday in December with the saints at Morganfield on request of the pastor, Brother B. J. Davis. Our beloved Brother had a cordial welcome to this inviting field and after three months of work was taken seriously ill. He is better than he has been, but he is far from well.

They have built a handsome church, costing some \$11,000, and I was invited to come and raise the indebtedness, which was \$5,500. To many, it seemed impossible to succeed at this time, but the brethren got under the task, with real zeal and interest, and at the close of the afternoon service the entire amount had been secured. All hearts are greatly rejoiced and the house will be dedicated some time in January.

In writing to me the day following, the noble pastor wrote me: "Dear Brother Powell: I am the happiest man in Kentucky. Your visit to us and your work for us yesterday will never be forgotten by our people. Our hearts are full of gratitude to God, and to you, His servant. No other man, in my judgment, in the entire State is doing a work that is telling so so much for the great cause of Christ as the monumental work you are doing. The Lord is with you."

---

 Hazard, Ky.
 

---

On our visit in the heart of the Kentucky Mountains, it was our privilege to look upon the splendid new Baptist church that had been erected at a cost of some \$11,000 or \$12,000. It stands as a monument of the pluck and zeal of our beloved brother, A. S. Petrey. We also looked upon the splendid School Buildings, which are likewise a tribute to his dauntless courage.

Brother Petrey is in every sense of the word a Kingdom Builder, and stands entrenched in the confidence and affections of his brethren.



One of Many Churches, by Harry W. Jones, Church Architect,  
Minneapolis, Minnesota.

# ROCK ISLAND LINES

California Oklahoma Arkansas Louisiana  
Colorado Kansas Texas Nebraska

Route of the luxurious Golden State Limited to California every day, all the year round, from St. Louis and Chicago via El Paso Short Line, route of the lowest altitudes—NO EXTRA FARE.

## THE COLORADO FLYER

Every morning from St. Louis to Denver, Colorado Springs and Pueblo—an electric lighted train of perfect comfort. A delightfully picturesque ride to Kansas City, thence over the short route to the Rockies, make a trip on Rock Island trains a part of your vacation. Just a night on the way. Modern Pullmans, dining and observation car.

## THE ROCKY MOUNTAIN LIMITED

Every morning from Chicago; and other fast daily trains from St. Louis, Chicago, Omaha, Kansas City, St. Joseph and Memphis for Colorado, Yellowstone Park and the Pacific Coast. Our booklets, "Under the Turquoise Sky" and "Little Journeys in Colorado", are free for the asking.

If you are going anywhere to the West, write for detailed information as to rates, stop-overs, etc., to

**H. I. McGUIRE**  
**District Passenger Agent**  
38 East Fourth Ave. CINCINNATI, OHIO

## ... SUNDAY SCHOOL DEPT ...

Louis Entzminger, Editor.

State Sunday School Secretary.

205 E. Chestnut St., Louisville, Ky.

### Field Secretaries and Their Addresses:

N. T. Barnes, Box 101, Lexington, Ky.

J. J. Gentry, 4554 Second St., Louisville, Ky.

Leonard Leavell, Madisonville, Ky.

### A-1 SCHOOLS IN KENTUCKY.

Blandville—Rev. D. H. Rice, Pastor; E. R. Ransom, Superintendent.

Berea—Rev. G. B. Reed, Pastor; W. H. Porter, Superintendent.

Fifth Street, Lexington—Rev. Walter L. Brock, Pastor; Frank L. Smith, Superintendent.

Standing of the five highest States in the number of Normal Diplomas, Red Seal Awards, Blue Seal Awards, December 1, 1912:

Normal Diplomas—Kentucky, 2,103; Georgia, 1,821; North Carolina, 1,611; Texas, 1,590; Mississippi, 1,330.

Red Seal Awards—Kentucky, 243; Georgia, 159; Tennessee, 146; Texas, 139; Alabama, 126.

Blue Seal Awards—Kentucky, 161; Texas, 80; Alabama, 74; Georgia, 73; Tennessee, 64.

### Standing by Associations December 1, 1912:

Long Run, 376; North Bend, 185; Elkhorn, 178; Davless Co., 141; West Union, 115; Blood River, 76; Nelson, 70; Bell Co., 63; Bethel, 58; Campbell Co., 57; Wayne Co., 53; Pulaski, 49; South District, 45; Ohio Co., 43; West Kentucky, 39; Bracken, 35; Ohio Valley, 35; Concord, 34; Crittenden, 32; Shelby Co., 30; Little River, 28; Baptist, 27; Tabe's Creek, 27; Franklin, 23; Graves Co., 23; North Concord, 22; Breckenridge, 21; Ohio River, 20; Sulphur Fork, 18; Enterprise, 16; Bocne's Creek, 14; Warren, 14; Oneida, 12; Laurel River, 12; Lynn, 11; Liberty, 11; Muhlenberg, 10; Central, 9; Mt. Zion, 9; Goshen, 8; Severn's Valley, 8; Russell's Creek, 8; Simpson, 7; White's

Run, 6; East Lynn, 5; Union, 5; Ten Mile, 4; Bay's Fork, 2; Greenup, 2; Little Bethel, 2; Salem, 2; Three Forks, 1; Gasper River, 1; Freedom, 1; Owen Co., 1; Cumberland River, 1. Total, 2,103. Fifty-six Associations.

### OUR HONOR ROLL.

(All who report to us the enrollment in a class or individually as many as five in any book in the Teacher Training Course will be placed on this roll.)

Rev. J. J. Willitt, Rev. W. H. F. Jones, Robin F. Money, W. E. Hill.

### Blue Seal Graduates for the Month of November:

Miss Fannie Watson, Highland Park; Mrs. G. E. Cunningham, Highland Park; Mrs. Beatrice Givens, Owensboro; Rev. Wm. G. Everson, Newport.

Bor. Everson is the wide-awake pastor at Newport, Ky.

We have a number of Sunday Schools in the State that lack just a little of being A-1 Schools. We hope they will be ready for their awards in January. Report blanks for filling out your application can be furnished from this office or from Dr. Burroughs, at Nashville.

The State Secretary had a good meeting with Pastor T. H. Athey in the First Church at Shelbyville. A canvass of the city was made and the School graded. Bro. A. B. Logan is Superintendent of the School. Miss Clara Brenckman did magnificent Elementary Work for us. It was indeed a delightful week. Brother Athey is one of our very best and is sustaining his reputation as a great pastor and preacher. We understand that the Sunday School gained fifty-one in attendance the first week after grading.

Dr. S. S. Foss, the Superintendent of the Beechland Sunday School, reports fine success in the campaign for enlargement. Dr. Foss is one of our enthusiastic workers.

We are lending our influence and help to the great B. Y. P. U. Institute being held in the city of Louisville. Arthur Flake, B. Y. P. U. Secretary for the Sunday School Board, is the principal speaker on the program. James A. White, Presi-



dent of the city B. Y. P. U., is presiding, and our band of young people are giving earnest and enthusiastic support. It will mean great things for the young peoples' work in our city. We are always glad to do whatever we can to project the B. Y. U. work. However much good the Y. M. C. A. and other interdenominational agencies may do, they cannot train our Baptist young people in Baptist doctrines and history, and develop them along the proper lines to make efficient Baptist church members. The B. Y. P. U. stands for intelligent and active young people. If we are to have intelligent and active young Baptist church members, we must not only teach, but train our young church members for service.

Secretary J. T. Bowden is in the city attending the meeting.

We call your attention to the three meetings: Annual Sunday School Training School, Louisville, Ky., February 2nd to 7th, 1913; Baptist Workers Assembly, Dawson Springs, June 22nd to 27th, 1913; Baptist Summer Assembly, Georgetown Ky., June 30th to July 4th, 1913. Put these down in your note books, remember the dates, and plan to attend.

#### FROM WESTERN KENTUCKY.

During the past month two fine classes have been enrolled at Stephensport and Hardinsburg. At Stephensport the School was graded and a class enrolled with Miss Lena Payne as teacher. They entered into the work with great enthusiasm. Bro. W. H. F. Jones is pastor of the church.

Brother J. J. Willitt, pastor at Hardinsburg, and his wide awake people went eagerly into the Teacher Training Work. A class of six completed the course, and another class of five was enrolled.

The Blood River Association is making notable progress in Sunday School work. Eld H. B. Taylor, pastor at Murray, has been an enthusiastic advocate of the Teacher Training work for some time and through the columns of his magnificent little paper has kept it before the workers in the Association. Brethren Castleberry, Beal, Wilson and several other pastors in the Asso-

ciation have been encouraging the work. At the meeting of the Association in October the Executive Board was instructed to put a man in the Association, who though he will aid every phase of our denominational work will devote his time largely to Sunday School work. They secured Rev. J. M. Price, and he is at work on the field organizing and teaching classes and grading the schools, and in every way using his influence to project the work.

Brother Price is a graduate of Baylor University, Texas, and recently took his Masters Degree at Brown University. He is splendidly equipped and a very efficient worker, and one of the finest young men in every respect with whom we have been associated. He is doing in Blood River Association what can be done with wonderful effect in all of our larger Associations. Of course many of the Brethren do not see it this way now, but we believe they will in the not far distant future.

Mr. Robin F. Money reports a class taking the Norman Manual at the Twenty-second and Walnut St. church, this city. Superintendent Despain is a loyal supporter of the Teacher Training work, and everything that tends to efficiency in the Sunday Schools. This is the largest Sunday School in the State. Dr. Millard A. Jenkins is acting pastor and backs up the work in fine fashion. They are planning for a campaign for enlargement.

Rev. W. R. Hill reports a class from Clinton taking Book 4. We are sorry to see Brother Hill leave Clinton church. We, however, congratulate the Princeton people on securing him as pastor. He is one of our staunch supporters in Teacher Training work and Sunday School work generally. He goes to one of our finest churches and will find there a loyal band of capable and efficient workers, from Superintendent Groom on down the list.

The Annual Meeting of the State Secretaries of the South will take place in Hot Springs, Ark., February 12th, 13th and 14th.

Rev. R. A. Barnes reports a good meeting at Liberty.

**... WOMEN'S DEPARTMENT ...****Central Committee.**

Miss E. S. Broadus .....Chairman  
1227 Third Avenue.  
Mrs. B. A. Rees .....Treasurer  
2326 Longest Avenue.  
Miss Clifford E. Hunter .....Secretary  
Box 396.

**THE CHRISTMAS WEEK OF PRAYER.**

At Christmas time the hearts of our Baptist women are turned to the thought of a gift for our Master in the form of a special contribution for our mission work in China. Of this special season of study, prayer and gift, Dr. Willingham says: "No one can estimate the good which has been accomplished by your consecrated gifts each year in behalf of the work for Foreign Missions. As you celebrate the Christmas time and think of the coming of our Lord and Saviour into the world, you will pray and give toward the bringing in of His Kingdom. . . . Never in the history of the world has China stood with her 400,000,000 people so ready to receive the gospel as she is today. The old traditions have been broken up and the people are earnestly inquiring for the new. Today seems to be the supreme opportunity for entering into that country with the gospel truth. Our missionaries who have been laboring long are rejoicing at the outlook, but they are earnestly pleading for more laborers to enter into the fields which are white to harvest."

The material for this Christmas Week of Prayer has been in the hands of the Societies for ten days. If yours has not been received please write for it. As you lay by your gift of money—a worthy gift we pray—we ask that your gift of time, thought, interest, sympathy, love and prayer, shall even exceed the gift of money; it is needed just as much.

Mission study classes should be organized in each Association and our new book on State Missions should be diligently studied. Remember State Missions lead during this period.

The Foreign Mission Journal, Home Field and Kentucky Mission Monthly, all for 60c.

**WHAT KENTUCKY BAPTISTS HAVE GIVEN TO CHINA.**

1893—Mrs. Peyton Stephens (Taylorsville), Chefoo.  
1894—Miss Julia McKenzie (Owensboro), Yangchow.  
1900—Miss E. B. Thompson (Louisville), Hwang-Hien.  
1903—Rev. W. E. Sallee, Kaifeng.  
1904—Miss Mary Moorman (Owensboro), Yangchow.  
1905—Rev. E. L. Morgan, Lai-cLow-fu.  
1905—Mrs. R. T. Bryan, Shanghai.  
1906—Miss Sallie Priest (Henderson), Shanghai.  
1906—Mrs. A. S. Taylor, Yangchow.  
1907—Rev. P. H. Anderson (Bardstown), Canton.  
1909—Mrs. R. E. Beddoe (Murray), Ying-tak.  
1910—Miss Louise Tucker (Louisville) Shanghai.  
1910—Mrs. H. M. Harris (Louisville), Kaifeng.

**OUR MISSIONARY TO COLORED PEOPLE**

A very important part of our State Mission work is that of helping to support a missionary among colored women and children. Ten dollars a month is our aim, being half the salary of Mrs. Bettie Withers. But last year we gave only \$72 to this object. Let us not overlook the needs of these our neighbors, but give promptly and regularly the small amount promised. If there are not 120 Societies willing to give one dollar each, surely there are some who will double their gift. See the report sent in to our annual meeting by the Corresponding Secretary of the B. W. Missionary Convention of Kentucky, through whom we aid in supporting Mrs. Withers, and send at once your contribution.

Louisville, Ky., Nov. 11, 1912

Dear Sisters—We send greetings to all in behalf of the colored Baptist women of Kentucky engaged in doing mission work among our people.

We are anxious that you know how deeply grateful we are to you for your interest in our uplift and welfare. To know that you think of us, that you pray for us, that

as far as you can, aid us financially, is an inspiration that has done more than I can tell you to encourage us to undertake great things for the Master.

Mrs. Bettie Withers, our Worker, whom you help, says in her report: "What a great privilege is ours to go forth in the Master's service. O, how happy I have been when I have trudged the streets and congested districts of this city on business for the King. How wonderfully He has blessed every effort made to bring His light and love into these dark places to waiting, hungry souls. How I have wished I could be three persons, that more space could be covered and more men, women and children reached. How great the need, how few the workers, how little the interest. May God help us to arise and be doing."

She made 500 visits, found 78 homes without Bibles, held 28 mothers' meetings and cottage prayer meetings, looked after three bands of children. Conversions in bands, 22; in City Hospital, 1; in house to house visits, 4. Total, 27. Persons reclaimed, 10.

Little good can be accomplished by one or two visits, but to help persons they must be visited often. This is what we do. May we ask your continued aid and prayers. If it be ever so little, we shall feel grateful. We pray God's richest blessings on all your deliberations and that great results may come from all lines of your service. Yours in His name,

MRS. MARY V. PARRISH,  
Corresponding Secretary.

847 Sixth Street.

#### BARBOURVILLE INSTITUTE.

An interesting part of our meeting in Madisonville was the collection taken for alterations in the dormitory at Barbourville. By request, Miss Mallie Baker, one of the teachers, spoke of the school, its work and its needs. Then pledges were asked for, to meet one pressing need, and it was beautiful to watch the enthusiastic giving, until soon \$83 was promised in ones and twos and fives, from many Societies. It will be wisely expended we may be sure. The school greatly desires another teacher, who can combine instruction in Domestic Science with some other classes. I believe

\$45 a month would pay the salary. Perhaps there are friends of the Mountain Schools who will like to help in this direction. Send all gifts for the schools to our Secretary, Miss Hunter.—E. S. B.

#### NEW SOCIETIES REPORTED NOVEMBER, 1912.

Sunbeams—Owensboro, First, Daviess County Association.

Y. W. A.—Clifton, Long Run Association.  
W. M. S.—Grays, Lynn Camp Association; Dawson, Daviess County Association; Calhoun, Daviess County Association; Glen-View, Long Run Association.

#### NEW SOCIETIES.

Rejoicing over 112 new Societies, we yet long for many more, especially young people's bands. The children are always ready to join, if leaders can be found. In each of the 75 new W. M. S. we hope some one can be secured to organize a Young Woman's Auxiliary, a Sunbeam Band or a Chapter of Royal Ambassadors. Sometimes three volunteers may be inspired to undertake the three Societies. No greater service to our Lord can be undertaken.—E. S. B.

Rev. J. K. Smith at Harlan reports a glorious meeting and seventeen baptisms. He was aided by Bro. DeGarmo.

(October Receipts continued from last issue)

North Bend Ass'n—Immanuel S. S., J. W. V., \$16.97; Madison Ave. S. S., Mrs. A. B. \$21; Madison Ave. ch., \$25; Bank Lick ch., W. D. B., \$8.56; Southside Bapt. ch., W. T. P., \$21.79; Immanuel ch., Rev. J. W. B., \$9.22; Bullittsburg, Rev. J. P. J., \$75; Immanuel ch., J. W. B., \$2.92.

North Concord Ass'n—Cumberland River ch., J. P., \$50.

Ohio Co. Ass'n—McGrady Creek ch., W. M. F., Tr., \$25; Woodward Valley ch., W. M. F., Tr., \$12.36; Rockport ch., W. F., \$6; Hartford S. S., W. M. F., \$2.77.

Ohio River Ass'n—Salem S. S., J. O. P., \$5; Fredonia S. S., F. A. H., 71c; Fredonia ch., C. W. J., \$43.20; Pinckneyville ch., H. J. R., \$2; Smithland, W. D. C., \$11; Booming Grove, W. D. C., \$5; Grand Rivers, W. D.

C., \$5.

Oneida Ass'n—Hubbardsville ch., T M., \$5; Oneida ch., \$5; Oneida S. S., \$5; Bethany ch., A. J. M., \$5.

Owen Ass'n—F. M. G., Tr., \$225.

Ohio Valley Ass'n—Little Bethel S. S., Mrs. I. W., \$11.56; 1st ch., DeKoven, Rev. C. T. C., \$22; Mt. Pleasant ch., Mrs. T. M. G., \$7; J. H. F., \$633.08; Corydon ch., Rev. J. B. M., \$100; Audubon ch., J. H. F., \$6.72; Bethany ch., \$28.60; Bellefield ch., \$1.12; Cash Creek, \$5.19; Clay ch., \$36.20; Cherry Hill ch., \$3.04; Graves' Creek ch., \$7.89; Highland ch., \$20.75; Little Bethel ch., \$3.42; Little Union ch., \$10.54; Morganfield ch., \$23; New Harmony ch., \$25; New Hope ch., \$3.75; Seven Gums ch., \$4.15; Sturgis ch., \$23.66; Sullivan ch., \$12.55; Zion ch., 80c; Zion Union ch., \$15.29; Corydon ch., \$25.25; Spottsville ch., \$5.76; J. H. F., Tr., \$3.50.

Rockcastle Ass'n—Mt. Zion ch., Z. J. A., \$43.85; Mt. Vernon ch., Rev. J. McK., \$40; Freedom ch., J. J. P., \$1; Livingston ch., J. J. P., \$1; Line Hill ch., J. J. P., \$1.

Russells Creek Ass'n—Campbellsville ch., J. R. D., \$150; M. W. T., \$143.30; Pleasant Valley ch., H. A. B. \$112.64.

Salem Ass'n—Vine Grove ch., H. C. H., \$10.62; Hill Grove ch., Dr. S. A. S., \$2.87.

Severn's Valley Ass'n—Rhudes' Creek ch., Mrs. E. C., \$8.25; Rhudes' Creek ch., J. M. E., \$7.

Shelby Co. Ass'n—Mt. Vernon ch., J. T. M., \$12.15; Bethlehem ch., J. T. M., \$6; Graffenburg ch., J. T. M., \$11; Simpsonville ch., \$5.41; Indian Fork, F. T. C., \$3.25; Bethlehem ch., B. R., \$20.50; Shelbyville ch., J. T. M., \$3.18; Mt. Moriah ch., J. T. M., \$23.55.

Simpson Ass'n—J. H. C., Tr., \$373.52.

South District Ass'n—1st ch., Danville, E. W. C., \$195.48; Stanford ch., J. C. F., \$40; Forks of Dix River, J. P. J., \$26.32; Forks of Dix River, J. P. J., \$60.

South Kentucky Ass'n—Eubank ch., R. O. D., \$6.05; Eubank S. S., R. O. D., \$6.07; Rockyford ch., O. L. M., \$1.95.

Sulphur Fork Ass'n—Dr. J. M. M., Tr., \$800.63.

Tate's Creek Ass'n—Richmond ch., Mrs. H. S., \$35; Republican ch., G. C. B., \$8.25; Berea ch., G. H. F., \$11.44; Berea L. M. S., G. H. F., \$2.76; Crab Orchard ch., L. S. E.,

\$5.42.

Ten Mile Ass'n—Vine Run S. S., W. A. P., \$1.50.

Three Forks Ass'n—Leatherwod ch., L. L. \$20; Hyden ch., L. L., \$8; Hindman ch., L. L., \$5; Whitesburg ch., L. L., \$5; Jackson ch., W. C. R., \$5; Hazard ch., A. S. P., \$10.

Union Ass'n—Falmouth ch., H. W. B., \$3.47; Cynthiana S. S., C. M. J., \$10.

Upper Cumberland Ass'n—M. L. N., Tr., \$6.20; M. L. N., Tr., \$4.25; Harlan ch., Rev. J. K. S., \$20.50; M. L. N., Tr., \$2.52.

Waren Ass'n—Oak Forest ch., J. C., \$6; Smith's Grove S. S., Mrs. G. C. G., \$18.35; Smith's Grove ch., W. T. C., \$162.75; W. F. C., Tr., \$323.84; Smith's Grove, G. C. G., \$5; Barren River ch., W. H. M., \$5; 1st ch., Bowling Green, J. W. P., \$107.26; Oakland ch., Mrs. S. J. H., \$22; Woodburn ch., Dr. E. J. K., \$12; Central Bapt. ch., L. B. C., \$12.30; 1st ch., Bowling Green, J. W. P., \$2.74.

Wayne Co. Ass'n—Liberty ch., J. M. N., \$3; 1st ch., Monticello, S. S., H. M. E., \$14.89; R. C. K., \$20.

West Kentucky Ass'n—1st ch., Fulton, Rev. M. E. S., \$125; 1st ch., Fulton, W. M. U., \$25; Clinton ch., W. R. H., \$78.95; D. S., Tr., \$243.11; W. L. K., \$1.50; Sassafras ch., W. L. K., \$2.80; Arlington S. S., R. P. N., \$4.66; Hickman ch., H. B. W., \$5.

West Union Ass'n—1st ch., Paducah, U. W. R., Tr., \$50; Wickliffe S. S., R. E. B., \$2.15; Barlow S. S., J. H. C., \$6.80; T. H. H., Tr., \$302.91; 1st ch., Paducah, W. W. R., \$613.21; Blandville ch., E. R. R., \$1; Blandville ch., \$1.

Whites Run Ass'n—Liberty Sta. ch., Rev. T. C. C., \$81.40; O. W. G., \$212.83; Carrollton ch., J. R. R., \$37.50.

Individual—Mrs. J. E. P., \$10; Foreign Mission Board, \$100; F. P. D., \$5; Gen. Ass'n Col. Bapt., Rev. P. H. K., \$25; For. Miss. Brd., \$100; Dr. J. F. G., \$3; Lou. S. S. Ass'n., A. E. W., \$1; Home Miss. Brd., \$400; A. A. M., \$25; E. W., \$1; J. VanA., \$15; G. W. D., \$100; W. J. P., \$5.

Church Building Fund—W. C. J., \$50; Rents, \$16; Porter Memorial, \$100; Interest, \$3.33; Theodora Harris Fund, \$500; Fifth St. Bap. ch., \$100; Beechland ch., \$84; 18th St. ch. Loans, \$160; 18th St. ch. Interest, \$4.

## Good Books Make the Best Xmas Gifts

**THE MASTER OF "THE OAKS"**—By Caroline Abbott Stanley.

Price \$1.25, postpaid

This is one of the best sellers, and to read it is to make you enthusiastic about the book. It gains the reader's attention at once and never loses it.

**THE PENNY PHILANTHROPIST.**

Price \$1.00, postpaid.

This story of "Peggy," the proprietor of the Halstead Street, News "Imporium," will quicken the beat of sympathetic hearts. "Others" was her motto, and those who read the sparkling record of her penny-a-day philanthropy will thereafter irresistibly think of others. The Penny Philanthropist, like the widow with her mite, will enshrine herself in the hearts of those who love the unobtrusive deeds of simple kindness.

**MISS 318 AND MR. 37**—By Rupert Hughes.

... .. Price 75c, postpaid. ... ..

Miss 318 has met her affinity. In this latest story of how she captured him in the person of a New York fire laddie, "Number 37," Mr. Hughes has surpassed himself. The narrative is full of the same characters, humor, department store lingo and vital human interest of MISS 318.

**EASTOVER PARISH**—By Margaret E. Sangster.

Price \$1.00, postpaid.

A new story by Margaret Sangster is an "event" among a wide circle of readers. Mary E. Wilkins places Mrs. Sangster as "a legitimate successor to Louise M. Alcott as a writer of meritorious books for girls, combining absorbing story and high moral tone." Her new book is a story of "real life and real people, of incidents that have actually happened in Mrs. Sangster's life."

**THE SCOUT MASTER OF TROOP 5**—By Mrs. I. T. Thurston.

Price \$1.00, postpaid.

Mrs. Thurston demonstrated to the delight of thousands in "The Bishop's Shadow" that she knew the heart of a boy as few other writers to-day do. She has again proved her right to be considered a master interpreter of the boy mind in this Boy Scout story. It has action a-plenty, is fresh, breezy and the style is straightway and clear cut.

**MISS BEAUTY**—illustrated—By Helen S. Woodruff.

Price \$1.00, postpaid.

A deliciously sweet and humorous story of Southern life and the adorned daughter of the plantation. Among her character-creations that promise to become classic expressions of the plantation negro of the present time are Uncle Shoddy, Mammy, Cookie, Black Mat, and Virginia. The quaint philosophy and the exquisite humor of Miss Beauty give it place with "Uncle Remus" and "Mrs. Wiggs."

**BAPTIST BOOK CONCERN (Incorporated),**

636-638 Fourth Avenue - - - - - Louisville, Ky

(October Receipts—continued from page 12.)

Ky. Central Committee—Ky. C. C., \$10.  
 \$50; Refund to K. C. C., \$22; W. M. U., \$5;  
 Miss Hunter, \$1,097.23; Ky. C. C., \$332.33.

(Balance of October receipts in next issue)

### RECEIPTS FOR NOVEMBER.

Bethel Ass'n—H. H. A., \$116.68.

Blood River Ass'n—Salem ch., J. L. P.,  
 \$8; Benton ch., \$10; Locust Grove ch.,  
 \$6.50; Sinking Springs ch., \$2.50.

Boone's Creek Ass'n—1st ch., Winchester,  
 W. P. H., \$104.80.

Bracken Ass'n—Mt. Sterling ch., W. T.  
 T., \$103.1.

Book Sales—Mrs. McC., \$5; Mrs. M. L.  
 O., 15c; Book Sales, 50c; B. F. R., \$6; Rev.  
 B. F. S., 15c; A. E. W., 30c; Dr. W. E. H.,  
 \$6.78; W. D. P., 25c; W. P. S., \$12; Rev.  
 B. F. S., 80c; A. B., P. S., \$4.30; Rev. F. P.  
 G., \$3.90; W. H. Setzer, 15c; Rev. J. R.  
 C., \$25; J. W. W., \$22.74.

Campbell Co.—Licking S. S., R. R. D.,  
 50c; Newport S. S., Miss K's Class, \$1;  
 Wilmington ch., A. M. M., \$15; Licking  
 Valley S. S., 81c

Enterprise Ass'n—Paintsville ch., W. H.  
 S., \$73.25.

Franklin Ass'n—J. H. M., \$10.41; 1st ch.,  
 Frankfort, Dr. J. W. H., \$128.

Graves' Co. Ass'n—Mayfield ch., \$107.10.

Individual—5th St. ch., Lexington, W. L.  
 B., \$39; Return Expressage, 75c; Rents, R.  
 B., \$16; H. L., \$1; 5th St. ch., Lexington,  
 W. L. B., \$15; Special Fund, \$117; Interest,  
 50c; Gettings' Estate, \$2,970; Beechland  
 ch., Dr. S. S. F., \$39.98; Beechland ch.,  
 Dr. S. S. F., \$7.25; Beechland ch., Dr. S.  
 S. F., \$78.07.

Journals—Mrs. H. C. D., 50c; Mrs. C. H.  
 P., 50c; Mrs. J. R. H., 60c; Mrs. A. F. W.,  
 60c; Mrs. J. M. H., 20c; Jos. E. Fulton,  
 60c; Mrs. M. M. T., \$3; Eld. H. B. T., \$1.80;  
 Mrs. R. L. W., \$7.20; L. J. C., 60c; E. R.  
 C., 60c; Rev. W. L. B., 25c; E. C. F., 60c;  
 J. A. B., 25c; J. A. B., \$1.20; L. W. D., 25c;  
 E. A. C., \$1.20; Mrs. M. E. K., 85c; W. D.  
 P., \$1.20; Miss S. U. C., 60c; Miss L. M.,  
 60c; E. J. W., 35c; W. A. M. W., \$12.55;  
 Rev. F. P. G., \$3; Rev. G. B. R., Jr., \$1.80;  
 Rev. T. M., \$1; W. B. M., 60c; L. E. C.  
 (adv.), \$3; Mrs. E. C., 60c; Miss M. B.,  
 \$1.20.

Ky. Central Committee—K. C. C., \$2.78.

Long Run Ass'n—22nd and Walnut St.  
 ch., C. H. N., \$61.98; Parkland ch., C. M.  
 H., \$48.13; 18th St. ch., B. V. B., \$1; Cal-  
 vary ch., W. H. J. Tr., \$2.50; Crestwood  
 ch., R. T. C., \$22.30; Eight Mile ch., J. B.  
 T., \$6; Parkland ch., C. M. H., \$10; Beech-  
 land S. S., E. J. B. \$3.04; Broadway ch., T.  
 J. H., \$100; 3rd Ave. ch., Mrs. C. S. W.,  
 \$21.53; Oakdale ch., Wm. G. H., \$28; Mead-  
 ow Home S. S., C. T. M., \$5.

Nelson Ass'n—Bloomfield ch., J. A. K.,  
 \$25.

Ohio Valley Ass'n—1st ch., Henderson,  
 R. F. C., \$222.98; Mt. Pleasant ch., J. H. F.,  
 \$55.76; Morganfield ch., \$2; Bellefield ch.,  
 \$35.26; Cash Creek, \$10.34; Clay, \$2.46;  
 Cherry Hill, \$6.02; Graves' Creek, \$15.74;  
 Audubon \$13.44; Hebbardsville, \$13.30;  
 Highland, \$24.85; Little Bethel, \$6.79; Lit-  
 tle Union, \$22.04; Mt. Olive, \$10; New Har-  
 mony, \$50; New Hope, No. 2, \$7.50; Seven  
 Gums, 8.30; Sturgis, \$53.67; Sullivan,  
 \$12.36; Spottsville, \$11.52; Shady Grove,  
 \$3.20; Zion, Henderson, \$1.60; Zion Union,  
 \$30.57.

Pulaski Co. Ass'n—Burnside S. S., E. S.  
 N., \$10.

Salem Ass'n—Brandenburg ch., Phila-  
 thea Class, A. S., \$10.

South District Ass'n—Rolling Fork ch.,  
 R. A. B., \$69.25.

South Ky. Ass'n—Rockyford ch., O. L.  
 M., \$11.90.

Tate's Creek Ass'n—Crab Orchard ch.,  
 L. S. E., \$4.07; Hay's Fork ch., T. H. T.,  
 \$4.48; Crab Orchard ch., L. S. E., \$2.64.

Ten Mile Ass'n—Macedonia S. S., D. L.  
 S., Supt., \$1

Three Fork's Ass'n—Jackson ch., W. M.  
 U., W. C. R., \$1.

Warren Ass'n—1st ch., Bowling Green,  
 J. W. P., \$92.26; 1st ch., Bowling Green,  
 S. S., J. W. P., \$28.74.

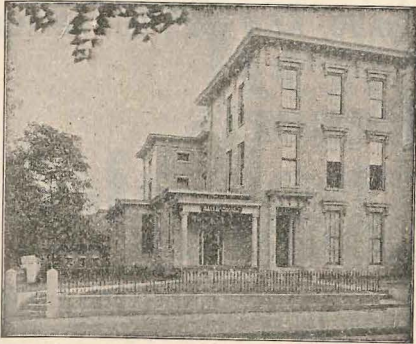
Wayne Co. Ass'n—Beaver Creek ch., P.  
 P. C., \$17.27.

West Union Ass'n—1st ch., Paducah, W.  
 W. R., \$50.

White's Run Ass'n—Ghent S. S., W. J.  
 R., \$2.80.

Our brethren, Jenkins, Walters and Amer-  
 son, who are laboring for five months in  
 Ohio, report an interesting time.

A CHAPEL FOR PATRONS



# LEE E. CRALLE

Funeral Director

S. W. Cor. 6th and Chestnut Sts.  
Telephone Main 430

LOUISVILLE, - KENTUCKY

# MOLL & CO.

Incorporated

Printers, Binders

Publishers

120 S. First St. Louisville, Ky.

Home Phone 351 Correspondence Solicited

# BLUM ART GLASS CO.

INCORPORATED

Maker of Church Windows

640 Third St. Louisville, Ky.

# “ANITA”

AMERICAN LIGHTEST WATER

Always Pure, Fresh & Invigorating



THE BEST COOLER ON THE MARKET

# Anita Spring Water Co.

INCORPORATED

PHONES { Home 4520  
Cumb. M. 1468-A

Our New Plant, 210-212 Pearl St.  
LOUISVILLE, KY.

-----WE ARE-----

MANUFACTURERS OF

# MONUMENTS

Of High Class, But Moderate Prices

Peter-Burghard Stone Co.

SALESROOM

317 W. Jefferson St.

PLANT

13-14 Maple St. Louisville, Ky.

# FLORIDA

CUBA, CALIFORNIA, MEXICO, COLORADO, NEW MEXICO, ARIZONA  
and many other

## Winter Resorts

Best reached by

## Southern Railway

Operating through trains carrying high class coaches, Pullman Drawing room sleeping cars and Southern Railway Dining cars service A La Carte

### ROUND TRIP TICKETS

Now on sale; good returning until late next Spring. For detailed schedules, Maps, Winter Homes folders, giving names of Hotels Boarding Houses, etc., Pullman reservations, etc., write to or see nearest Southern Railway representative. Persons in Kentucky and Southern Indiana address

B. H. TODD, District Passenger Agent, 125 South Fourth St. Louisville, Ky.

## A Valuable Book FREE

It tells you how to raise better, bigger  
crops with less work and  
more profit.

**Write for it TODAY**

**T**ELLS you everything you would like to know about field seeds; how to select high-grade seeds, sow, fertilize and harvest Clover, Alsike, Blue Grass, Orchard Grass, Timothy, Red Top and other field seeds in a way that really makes farming pay.

By all means send for it today. It's free. So is our special book on Orchard Grass which you certainly ought to have right now.

Write for both books and name of "Gold Medal" seed dealer in your locality.

**LOUISVILLE SEED CO.**

**104 South Second St.**

**LOUISVILLE, KY.**

