

Vol. XV.

No. 1.

Kentucky Mission Monthly

OFFICIAL ORGAN OF KENTUCKY BAPTISTS

Entered Feb. 5, 1903, at Louisville, Ky., as Second-class matter, under act of Congress, March 6, 1879.

MAY, 1915

25 Cents a Year

W. D. POWELL, - - - - - EDITOR
MISS E. S. BROADUS, - - - - - EDITOR WOMAN'S DEPT.
A. E. WOHLBOLD, - - - - - BUSINESS MANAGER

GENERAL ASSOCIATION OF BAPTISTS IN KENTUCKY,

W. D. POWELL, Corresponding Secretary

205 East Chestnut Street, Louisville, Ky.

Officers

J. W. Porter,, Moderator E. O. Cottrell, Asst. Moderator C. W. Elsey, Asst.
Moderator, John L. Hill, Sec'y A. E. Wohlbold, Asst. Sec'y.

Victory For Kentucky Baptists

Foreign Missions, \$51,056.

Home Missions, \$36,845.

THE FOREIGN, HOME and KENTUCKY MISSION MONTHLY, all for 60c PER YEAR.

Published Monthly at 205 East Chestnut St., Louisville, Kentucky



Visit California

Don't miss the wonderful opportunity for educational and pleasure travel afforded by the

Panama-Pacific Exposition

San Francisco

Panama - California Exposition

San Diego

Tickets are on sale every day at Very Low Excursion Fares via

SOUTHERN RAILWAY
Premier Carrier of the South

For full information, see Ticket Agent, Southern Railway or write B. H. Todd, District Passenger Agent, Southern Railway, Louisville, Ky.



We are Manufacturers of

Monuments and Markers

MADE OF BEST GRANITE



Geo. Panke Co.

—Incorporated—

630 E. JEFFERSON ST., Bet. Clay and Hancock

Phones, City 5237 Main 1054

The Kentucky Mission Monthly

"LET HIM THAT HEARETH SAY COME"

VOL. XV.

MAY, 1915

No. 1

... EDITORIAL ...

W. D. POWELLEditor

Gratifying Progress.

It encourages one to press forward in the performance of the tasks assigned us when we are encouraged by success in the past. We are at the end of six months of our Associational year and we have disbursed for all purposes an amount which lacks less than three hundred dollars of being equal to the amount received during the entire year when we entered upon our service as Corresponding Secretary. Our receipts for State work has been some \$6,000 less than our disbursements. But our noble pastors and Churches will soon make good this deficit. Our faith in them is implicit. No state in the South can show so small a debt, even where their expenditures are much less than our own. Our Missionary machinery is in splendid working order and a man who would interfere with it or disarrange it by introducing other matters which might do hurt and injury should well fear that the hand of God will be laid heavily upon him.

We have received during the last six months for State Missions \$17,145.03; for Church Building \$1,300.58 and for miscellaneous objects \$5,036.92. A total of \$23,482.54. We have received for Home Missions \$22,859.19 and for Foreign Missions \$77,970.17. Let us praise God and take courage. Surely He is leading in the heroic efforts we are making to develop what we have as well as to occupy new territory. We ask the prayers, the sympathy and the co-operation of all our Lord's hosts in our great State.

Kentucky goes to Houston with a note of victory in her heart that ought to prepare us for more valiant deeds in the year to come. Let us remember Caleb's cry "We are able, let us go up and possess it."

This has caused many a Church to snatch victory out of the teeth of defeat. Obishai's cry in response to David's request for volunteers "I will go down with thee," ought to stimulate every Church member to never hesitate when duty calls. When Israel was struggling with Ammon, it was not a bad man who cried aloud, "Let us be of good courage and play the man." This heroic note has inspired men for many a battle field. Christianity will have a militant spirit just so long as it takes its color from the Bible.

Deeds in our denominational life are only made to be forgotten. Our fingers should tingle with enthusiasm when we think of this day of opportunity. Christ calls our men and women to aggressive service. We would sheathe the sword of battle but not the sword of the Spirit. We must be fighting battles all the time, for the gospel is taught in terms of battle—the sword, the shield, the soldier, the fight.

State Missions To The Front.

Our men and women must now bestow more thought and prayer upon the splendid work being wrought by our Missionaries and Evangelists.

The reports received for April show that there were 368 conversions, 266 baptisms and 381 additions to our Churches. They organized two Churches and twenty-eight Sunday Schools. The work that was done in developing Christian character and deepening the spiritual life of our membership by this splendid force cannot be tabulated. The majority were very faithful in securing and forwarding to us money for the support of Home and Foreign Missions. Our workers must bestir themselves to get to us, month by month, funds for the support of the State work as well as for our general Boards. It will be discouraging if our people go ahead in their gifts to Home and

Foreign Missions and fall short in their gifts to State Missions.

In no state is there more unity and harmony than in our own. If there is any friction, it is not among those who work for Missions. The growth along all lines of Missions has been healthy and satisfactory. Take the matter of Foreign Missions as an illustration. Last year our apportionment to Foreign Missions was \$46,000. We gave that and \$2,000 over. Then this year our apportionment was \$50,000, which was an increase of \$4,000. We paid that and \$1,000 more, making a net increase of \$3,000 over the amount paid the past year.

We are succeeding well in our Sunday School work and in the work of colportage.

Several new churches are started in the mountains at points far remote from where any Baptist church ever stood. They are at needy points where, beside the native population, thousands of people have been assembled to work in the coal mines.

We are beginning some mission work among the colored population that ought to have been started years ago. The negro is with us and in the main they are Baptists. Catholics and Presbyterians have been embolden to begin extensive Missionary operations among them. This must be counteracted and the needy cared for. There is no consistency in sending our best men and women to think black in Africa while we neglect the African race at our door. They offer an inviting and promising field of labor.

The friends of good literature must furnish us with funds to supply the field with tracts on our denominational tenets.

Baptist men and women must remember our important state work in their will. Amounts should be given to "The General Association of Baptists in Kentucky" to be used for Church Building purposes or whatever is most needed. Better still to give it while living and receive an annuity until death and then the donor will know it has gone where he or she intended it. Relatives are too apt, by litigation, to divert it from channels of Missions and benevolence.

We appeal to Churches, pastors, W. M. Societies, Young Peoples Societies and Sunday Schools to furnish us money, month by month, to meet the obligations we have al-

ready assumed for work in our Commonwealth.

Our Brother in Black.

The State Board of Missions is making an earnest effort to save the property of State University. We are greatly encouraged at the prospects of receiving aid from the friends of negro education at the North, provided the people of Louisville and Kentucky will give some \$8,000 towards the liquidation of the \$20,000 now resting on the Institution. This is in reality about the only school the colored Baptists have in the state. It qualifies preachers and teachers and by the splendid Domestic Science department it prepares good domestics for the homes. It builds up Christian character and teaches qualities which servants ought to possess. It furnishes leadership among men and women for our colored people. Their progress in intelligence and financial development has been most encouraging. The large proportion of them are members of Baptist churches and they need to be trained for service. They are gladly co-operating with us in our undertaking and are highly appreciative of the service that is rendered. We trust that our friends throughout the State will furnish us speedily the means to care for this work. Three efforts have been made to secure this help and none of them were successful. We must have a victory. We ask the prayers, the sympathy and the co-operation of the Brotherhood.

A Word To Our Workers.

We are proud of our co-laborers who so thoroughly and energetically join us in our endeavor to take Kentucky for Christ and the Baptists. There must be in our work no drop stitches and no lost moments. We must make this a year noted for soul winning. By prayer, the reading of God's Word and a Godly walk we must create an atmosphere favorable to conversion. Paul preached a great sermon on Marris Hill, but it was barren of immediate results so far as we know. Peter, a less able minister, preached a sermon at Pentecost, in which there was an ingathering of three thousand because it was attended with such prayerful preparation. Our work must be carried on

WANTED—One thousand renewals to the Three Journals.

in an atmosphere of prayer if we are to expect the out pouring of God's Spirit and the opening of the hearts of sinners to receive the Word.

We must be diligent in service, we must preach the Word and keep close to the cross.

The Dedication of Highland Baptist Church.

On the second Sunday in May, by invitation, we joined in the opening exercises of the splendid auditorium, built by the Highland Baptist Church. It is a stone structure, beautiful in its architectural designs and pleasing to the eye within and without.

There was a large attendance and \$15,000 had to be raised. It was no easy task, but we were rejoiced to find when we closed that \$15,300 had been contributed. Dr. A. Paul Bagby, the pastor, is one of our strong and rising ministers.

Deer Park Baptist Church has begun the erection of a much needed house of worship. It is located about a mile beyond Highland Church and we anticipate great pleasure in being at its opening within a few months. Pastor R. L. Shirley is accomplishing great things in his field.

We are booked for a number of dedications in May and June. We have so many calls for this character of work that it is going to be necessary for us to turn some of it over to our worthy co-laborers in the State work. Very few people appreciate how taxing it is on one to raise large sums of money. It is one of the most difficult tasks one can perform.

THE DEDICATION OF WHITESBURG

Several years ago I rode on horseback into Letcher County with a view of establishing a church at Whitesburg. I preached for several days in the Court House and in the Methodist church. The Spirit of the Lord was with us and it was evident that there was a splendid opening. Some of our workers were requested to go there and hold a meeting which resulted in a number of conversions, baptisms and the organization of a church. A pastor was secured

for half time. Since then the church has usually sent from one to three messengers to the Southern Baptist Convention. They have sustained an unusual fine Sunday School. The younger members have shown great enthusiasm for our Lord's cause. The adversaries have been many, but they entered the door of opportunity and the results have been most gratifying. Soon after organization a splendid lot was obtained. When the Railroad penetrated the county the Depot was established very near the location for the Baptist Church. A beautiful house of worship has been erected costing some \$10,000. It is built of stone and brick with all modern conveniences.

It was no small task to raise the \$6,000 due on the day of dedication. Dr. J. W. Porter prepared the way by preaching a great sermon. There was great rejoicing when the full amount had been secured in cash and pledges.

Pastor A. C. Hutson is greatly beloved by his congregation. He is a splendid organizer and is deeply interested in the enlargement of our Master's Kingdom.

We shall soon hear the breaking of dirt for houses of worship at Fleming, Burdine and Jenkins. This will give us a connected line of churches running through the entire Eastern section of the state. We are in urgent need of funds to carry forward the enterprise of building Baptist meeting houses at needy points. Some should give thousands of dollars, some hundreds and others smaller sums to this worthy object.

"Dear Dr. Powell:

"Your telegram made me happy. All glory to God, who gave us the victory. You have fought a good fight and been a faithful leader. The Lord bless our churches and pastors. May we do greater work during this present year.

"Yours for Christ and Kentucky,
W. E. Hunter."

The following sensible admonition is being sent to our workers on the foreign field:

"To the Missionaries of the Foreign Mis-

sion Board of the Southern Baptist Convention:

"Dear Brethren and Sisters: Our present financial condition leads me to call your earnest attention to a rule of the Board which you signed when you were appointed missionaries.

"Article three, Rule 11, says: 'Missionaries must encourage native Christians in self-support, as far as possible, especially in the education of their children, the payment of native teachers and preachers, the defraying of church expenses, and the aiding of poor saints. This self-support of native churches is an end which our missionaries should never lose sight of, and for the establishment of which they must constantly labor.'

"I refer to this now to ask whether you cannot take advantage of the present situation to set forward the matter of native self-support? Everyone knows that the money market is straitened and that our Board must be experiencing great difficulty in raising the money to meet its obligations. This fact should give you a good opportunity of trying to lay on the native converts a larger measure of self-support. You could appeal to their self-sacrificing spirit and encourage them to assume gratefully a larger share in the support of the work. I suggest the following as being places where you could, perhaps, make progress toward a greater degree of self-support.

"1. In the support of pastors and evangelists. Cannot the churches be led now to assume a larger proportion of this?

"2. In bearing a larger part of local church expenses. Every congregation should be pressed to assume entirely the local church expenses as soon as possible.

"3. In paying the expenses of the Day Schools. Is this not a place where we may hope to come quickest to entire support by the natives?

"4. In assuming a larger share in supporting the Boarding schools.

"5. In the support of Training School students, both men and women. Cannot the churches do more towards meeting the expenses of the Training School students that must have some assistance?

"Of course, there are other items where



THE
HENDERSON
...ROUTE...
BETWEEN
LOUISVILLE
AND
ST. LOUIS

DAILY 8:35 a. m. = 9:30 p. m.

FOR EVANSVILLE

8:35 a. m. 4:40 p. m. 9:30 p. m.

Observation Parlor Cars and
Pullman Sleeping Cars Thru

For Rates or Further Information,
Address

H. L. SWEENEY, R. F. PENN.
City Pass. Agt. Trav. Pass. Agt.

S. W. Cor. 4th & Main
LOUISVILLE, - KENTUCKY

the natives may be encouraged to take a larger share of the expense. These will occur to you. The goal before us is a native church that can take care of itself, and I am hoping that at this time we may be able to advance many steps towards the attainment of our goal."

Wanted—Two Thousand new Subscribers or renewals to the Home Field, Foreign Mission Journal and Kentucky Mission Monthly during April, 60c a year. Separately 25c.



TITHING.

National Notes.

At the Woman's Missionary Union at Houston, Texas, it was officially stated that in the home churches six States reported more than 2700 tithers in the union. In 10 States there are 1900 mission study classes. Eight States reported that more than 2200 societies observed the January week of prayer for worldwide missions and the March week of prayer for home missions.

In the Laymen's Movement report there was shown a gratifying increase in the number of tithers at the conventions held at various times during the past year. The increase at various places ranged from 46 to 87, 32 to 103, 106 to 198 and other comparisons of like proportion.

Tithers' Thoughts.

Remember the words of the Lord Jesus, how He said, it is more blessed to give than to receive.

Not grudgingly or of necessity, for God loveth a cheerful giver.

All things come of Thee, O Lord and of Thine own have we given Thee.

\$5,680,000,000 Would

Build 11 Panama Canals.

Build 14 cities as large as Louisville.

Purchase all crops harvested in the United States in any one year.

Pay off almost six times the interest-bearing debt of the United States.

If changed into silver dollars, form a line long enough to go five and one-half times around the earth at the equator, the coins being placed edge to edge.

\$5,680,000,000 Will

Run the war for Great Britain alone for only one year, ending August 1st, so Lloyd-George, the Baptist Chancellor, reports, and yet if every Christian on earth had an income of only \$100 and tithed that income, it would put into the Lord's treasury three

hundred and twenty million dollars more than England's great outlay!

Still Sits Over Against the Treasury.

Only the Great Accountant can set apart to your credit any gain which has accrued from the promptness of your gift, but "when his books are opened" you will see it; it will be "interest" in terms of the salvation of human beings there beside you in heaven's happiness, and you will have all eternity in which to rejoice in that added margin of result from your earthly effort.

We feel so thankful when, by self-denial, or by good fortune, we have secured a sum "for the Lord's work," that we actually stop there. Marvelous to say, we sometimes stop there for good and all. A father asked his daughter, my friend, one day: "Mary, what do you do with the money that you save from your allowance?" She meditated a moment. "Well, I don't know." "I think," said he, "that it has just stayed in my pocket! You never got it from me." And it was even so. Yet Mary was not a child, but a very superior young woman.

Better look out, that in matters of giving you perform the doing of it. Do not hide your dollar—no, nor your dime—in a napkin for a year or so, nor for a month.

Consider

1. The infinite cost of our redemption. "Ye were not redeemed with corruptible things as silver and gold, but with the precious blood of Christ" (I. Peter 1:18).

2. The agent in our cleansing is "the Word of God, which liveth and abideth forever," and "ye have purified your souls in obeying the truth, through the Spirit" (verses 22, 23).

3. Our reward is "an inheritance incorruptible, undefiled, and that fadeth not away, reserved in heaven for you." The indescribable glory of that reward human eye hath not seen, nor human ear heard, nor human mind conceived. (I. Peter 1:4; I. Cor. 2:9.)

Thos. D. Osborne.

The people who are unevangelized are untaught, uncomfoted, unfed and lead dreary forlorn lives.

... SUNDAY SCHOOL DEPT ...

J. M. Price, 205 E. Chestnut, Louisville, Ky.
Acting Sunday School Secretary

A-1 Schools in Kentucky.

Greenville Baptist Sunday School—Rev. R. H. Tandy, Pastor; Mr. John X. Taylor, Superintendent.

Murray Baptist Sunday School, Murray—Rev. H. B. Taylor, Pastor; Mr. Barber McElrath, Superintendent.

Benton Baptist Sunday School, Benton—Rev. N. S. Castleberry, Pastor; Judge Joe L. Price, Superintendent.

Fifth Street Baptist Sunday School, Lexington—Rev. Walter L. Brock, Pastor; Mr. Frank L. Smith, Superintendent.

First Baptist Sunday School, Louisa—Rev. Olus Hamilton, Pastor; Mr. C. C. Hill, Superintendent.

First Baptist Sunday School, Mayfield—Dr. W. M. Wood, Pastor; Mr. E. S. Lowe, Superintendent.

Berea Baptist Sunday School, Berea: Rev. E. B. English, Pastor; Mr. John F. Dean, Superintendent.

Pollard Baptist Sunday School, Ashland: Rev. W. C. Pierce, Pastor; Mr. R. N. May, Superintendent.

Calvary Baptist Sunday School, Lexington: Rev. T. C. Ecton, Pastor; Mr. W. H. Porter, Superintendent.

First Baptist Sunday School, Corbin—Rev. J. T. Pope, Pastor; C. W. Nicholson, Superintendent.

First Baptist Sunday School, Somerset—Dr. W. E. Hunter, Pastor; J. S. Cooper, Superintendent.

Glasgow Baptist Sunday School—Rev. I. D. S. Knight, Pastor; Elisha Dickey, Superintendent.

Blandville Baptist Sunday School—Rev. Thos. H. Hogg, Pastor; E. R. Ransom, Superintendent.

Cherry Corner Baptist Sunday School, Murray—Rev. R. F. Gregory, Pastor; J. E. Houston, Superintendent.

Baptist Tabernacle Sunday School, Louisville—Dr. J. J. Cloar, Pastor; Matt. S. Mann, Superintendent.

First Baptist Sunday School, Jellico, (Tennessee)—Dr. J. E. Martin, Pastor; Z. D. Baird, Superintendent.

Calvert City Baptist Sunday School, Calvert City—Rev. J. P. Riley, Pastor; J. M. Tichenor, Superintendent.

ORGANIZED CLASSES IN THE SUNDAY SCHOOL.

J. M. Price

For some time the writer has felt that more attention should be given to the organized class in our Sunday School work in the state. We are fearfully behind in that regard. Up to date Kentucky has only fifty-seven organized classes registered with the Sunday School Board, while North Carolina has 924, Texas, 617, and six other states rank ahead of us. In this line we have not kept pace with the progress we have made in the other lines of Sunday School work.

It is not the province of this article to enter into any lengthy discussion of the value of the organized class—ample literature of that kind can be obtained from the office here or the Sunday School Board at Nashville. It may not be out of place to state, however, that it uses in a very advantageous way the "gang spirit" among men and boys especially, tends to locate responsibility for enlargement on the class rather than the teacher, and furnishes for every individual some definite task to perform. The results in our own state amply justify its merits. One class of young business men in the state, after organization, has grown from twenty-five to more than two hundred and fifty. Another class has been built up to more than one hundred out of men who previously did not attend Sunday School or preaching at all. A church of eighty-nine members, recently visited, has twenty-five young men in one class—more than a fourth of the School—and simply because it is organized and goes after them.

As is known the class names adopted by our Southern Baptist Field Workers' Conference for Baptist classes are Berean for young men; Fidelis for young ladies; T. E. L. (Timothy Eunice and Lois) for mothers; Convention Adult Class for men and women and Teachers Training Class for officers and teachers, present and prospective. New classes organizing should adopt these names and register with the Sunday School Board. Literature on this subject will be sent from this office on request.

Of course, some classes have previously organized as Baracas or Philatheas. The writer was in one of the first Baraca classes organized in the state—perhaps the first—and while he has the warmest feeling toward these organizations, yet, because of certain tendencies of the head of these organizations, which jeopardize our denominational as well as local church life, he believes it best for these classes to link themselves up with our own Southern Baptist Organized Class Movement, in fact if not in name. The following quotation from the head of the Baraca organization indicates a part of the danger.

“Creed and denominationalism are not employed in Baraca and Philathea.

“We think of one another as brother Baracas and sister Philatheas, and not Baptists, Methodists or Presbyterians. The names Baraca and Philathea, which have reference to no denomination, are of tremendous value in attracting those who have grown tired of over-emphasis of dogma and creed.”

“It knows no denomination and largely for this reason God has permitted it to grow. May the day never come when we depart from his inspired plan of interdenominational work.” . . .

“The devil never showed more cunning in his art than to encourage the building up of a strong and high denominational wall.” . . . “All the great evangelical denominations of the day are separated only on the unessentials.”

Let us awake to the importance of the organized class in the Sunday Schools of Kentucky, and let's make them Berean, Fidelis, T. E. L., or Convention Adult.

The following is a list of Normal Diplomas by Associations ending April 30, 1915; Long Run, 684; Blood River, 454; Elkhorn, 317; North Bend, 265; West Union, 192; Davis Co., 154; Pulaski, 154; Bethel, 136; Cambell Co., 128; Bell Co., 88; Nelson 80; West Kentucky, 77; Graves Co., 74; Wayne Co., 70; Bracken, 70; S. District, 69; Ohio River, 65; Little River, 61; Union, 58; N. Concord, 58; Ohio County, 56; Baptist, 53; Muhlenberg, 52; Concord, 47; Enterprise, 46; White's Run, 45; Shelby County, 44; East Union, 43; Mount Zion, 42; Ohio Valley, 42;

Tate's Creek, 41; Greenup, 39; Breckenridge, 39; Franklin, 37; Liberty, 35; Crittenden, 35; Three Forks, 32; Severn's Valley, 29; Russell's Creek, 28; Salem, 24; Little Bethel, 24; Sulphur Fork, 23; Warren, 22; Boone's Creek, 19; Freedom, 17; Goshen, 15; Oneida, 13; Laurel River, 12; Simpson, 12; Lynn, 11; Central, 11; Ten Mile, 6; E. Lynn, 5; Rockcastle, 5; Allen, 2; Upper Cumberland, 2; South Kentucky, 2; Gasper River, 1; Owen County, 1; Logan County, 1.

Teacher Training Items.

The standing to date of the five leading States, April 30, 1915:

Normal Diplomas—Texas, 4644; Kentucky, 4245; Georgia, 3094; N. Carolina, 2942;; Mississippi, 2308. Red Awards—Kentucky, 778; Texas, 667; Georgia, 336; Alabama, 321; Tennessee, 303. Blue Awards—Kentucky, 475; Texas, 367; Georgia, 187; Alabama, 165; Mississippi, 149.

Post Graduation Awards in Kentucky during April, 1915:

Gold Seals—Mr. Horace Sanderson, Long Run Ass'n; Mrs. Dave Jackson, Long Run Ass'n; Mrs. Susan Edmunds Stites, Bethel Ass'n.

Diplomas—Rev Andrew Carter Hutson, Three Forks Ass'n.

Blue Seals in Kentucky during April, 1915:

Rev. T. C. McGee, Graves County Ass'n; Inez Tinsley, Graves County Ass'n; Mrs. Frank Smith, Long Run Ass'n; Mrs. Dave Jackson, Long Run Ass'n; Rev. F. F. Soren, Long Run Ass'n; Dr. J. J. Cloar, Long Run Ass'n; Miss Anna Willis, Shelby County Ass'n; Mrs. T. H. Athey, Shelby County Ass'n; Miss Lillian Cozine, Shelby County Ass'n; Miss Sallie Rice, Shelby County Ass'n; Mrs. Thompson Webber, Shelby County Ass'n; Miss Mary Wallace, Shelby County Ass'n; Mrs. Ernest Van Arsdell, Shelby County Ass'n.

Red Seals in Kentucky during April, 1915:

Miss Ruth Lucinda Petrey, Three Forks Ass'n; Miss Lena Edna Hurst, Three Forks Ass'n; Miss Ethel A. Cooke, Three Forks Ass'n; Kelley D. Turner, Three Forks Ass'n; Miss Lillian Fallis, Baptist Ass'n; Rev. R. B. McDanel, North Bend Ass'n; Miss Minnie

(Continued on page 12.)

... WOMEN'S DEPARTMENT ...

Central Committee.

Miss E. S. Broadus **Chairman**
1227 Third Avenue.

Mrs. B. G. Rees **Treasurer**
2326 Longest Avenue.

Mrs. Kate Coleman Hinkle **Secretary**
205 East Chestnut, Louisville, Ky.

MESSAGE TO THE W. M. Union
By Miss Fannie E. S. Heck
President For 15 Years.

I saw a great company of women going down to the banks of a great river, and among them was one who was to go across. The river was very broad and deep, but they went with her all the way, even to the very edge, and some went so far as to almost go in with her. As she stepped down into the water they watched her very earnestly, and while they looked, she who had been very, very weak seemed to gain strength. As they gazed steadfastly upon her, they saw that the water, instead of pulling her down, seemed rather to bear her up on its waves. And looking yet more earnestly they saw that she was not alone but that One was with her upon whom she leaned.

Looking beyond on the other shore they saw a very great multitude—a great number of women, and some of them they knew. And beyond was a great city. As she went up out of the water, this company of women took her into their midst, and she passed into the city out of sight, and they saw her no more. And the women who had gone with her all the way, even to the water's edge, slowly turned away and went back to their homes. As they went they talked earnestly with each other, saying: "We never knew it was thus. We had been told, but we did not understand. Why have we spent our time in idleness and trifling when we might have been busy in the service of our King?" And as they held their children in their arms, they lamented, saying: "We have cheated our children. We have not trained them as we should, and the small things of life have seemed important to us, when we might have been

occupied with the great things of the world. What a loss is ours! We thought we gave much and did great things and we did not know how little and insignificant were these things; we did not know the privilege that was ours. We did not know there is but one thing in all the world—the love of Christ."

Looking upon that great company of women going down to the banks of the great river, I send you greetings, my sisters, dearly beloved and longed for. By a thousand signs which I cannot doubt, you have shown that you love me. Looking back over the long period since our united service began, my association with you, our mutual affection and our joyful triumph in a cause dear to all our hearts, stand out as one of the chief joys of my life.

As is known to you, I have been ill in a hospital for nine months. Here your messages of love and your prayers have followed me, soothing and brightening my days and finding grateful memory in my heart. Hard as it is for me to form the words, grieved as I know your hearts will be—I can never hope to be with you again. But, beloved, I did not say this to cause you tears. Let us rather rejoice and offer thanks for the years of our loving association and dream together once more of your future, which to-day is in my prayers. Looking back, who of you would, for any price, erase from your memory those frequent mountain tops of praise, when the past year having been filled with service, we laid our gift on the altar and

"Heaven came down
Our souls to greet,
And glory crowned
The mercy seat."

I can see your faces now shining with tears of joy, as I have seen them often in the past. I can hear your voices ring as I have heard them ring with praise until they seemed to mingle with an Invisible Choir. I can feel your hand-clasp as of old, warm with our love to our Master. These have been the indissoluble bonds of our Union. Since this is so, I do not fear to leave you. I can dream of your future with a trusting heart. Changes will come: new faces take the place of old; new and broader plans succeed those of to-day; but

our beloved Union is safe in our Master's care.

See to it, only that you listen to His voice and follow only where Christ leads:—

Be gentle in your personal lives, faithful and shining.

Be joyful, knowing His purposes are good, not evil, to his children,

Be prayerful in your planning.

Be patient and persistent in your fulfillment.

Endeavor to see the needs of the world from God's standpoint.

Plan not for the year but for the years.

Think long thoughts.

Strive for the conversion of those around you as faithfully as for the heathen.

Train the children for world-wide service.

Lead the young women gently in places of joyous responsibility.

Bring all your powers into the best service of the best King.

Thus shall your work abide and be abundantly blessed of God to your own joy and the joy of the world. In the belief that you will continue to adorn the doctrine of service, I bid you, dear friends, farewell. The God whom we love and serve will keep His own in love and peace and finally through His great love wherewith He hath loved us bring us all rejoicing into His presence above. Most earnestly I pray—God be with you till we meet again!

Hygeia Hospital, Richmond, Va.

Miss Heck was enthusiastically re-elected President of the Union and all the officers were re-elected except for some changes in the Executive Committee in Baltimore. Some of the State Vice-Presidents had resigned, and messages of regret were sent them. Mrs. Brinkman of Missouri, Mrs. Wheeler, of Tennessee, and Mrs. McComb of Mississippi have done royal service for many years and were greatly missed. Kentucky is the only State that has retained the same Vice-President for the twenty-seven years of the Union. Miss Heck held that office in North Carolina during the years when she was not President of the whole Union, and at the same time President of her State Union. Thanks were tendered for the faithful and effective service of Miss Mallory, Mrs. Johnson, Mrs. Lowndes and the rest of the Baltimore

Committee. The absence of Miss Heck and her serious illness cast a veil of sadness over every heart, but this only made us more tender and quiet in our deliberations; while we realized afresh "grace triumphant."

Twelve State Vice-Presidents and 178 delegates were enrolled, with 2,600 visitors. Several Kentuckians found themselves unable to go, but others were enrolled, whom we met on the way, so that the list finally read: Mrs. E. F. Wright and Hunter from Eastern Kentucky; Mrs. Geo. E. Hays, Coleman, Andrews, Smith, McLure, Eager, Woody, Hinkle, from the Central part; and from the West, Mrs. Day, Holloman, Hale, Tull, Kraus and Mercer and Miss Garrott. Mrs. Tull, of Paducah, was chairman of the Committee on Resolutions; Mrs. Eager and Mrs. McLure spoke for the Training School; Mrs. Hinkle was chairman of the Committee on Methods and spoke in the Informal Conference on Friday afternoon.

While the total receipts were slightly less than the previous year, Kentucky reported about \$7,000 more, part of this being for the Judson Centennial Fund and part for Training School Enlargement. For this latter object, our societies gave just a little more than one-third of the \$6,500 which we undertook to raise in three years, while \$1,000 of the whole \$7,500 has been given by the Local Board. So we must not relax our efforts to secure funds for this enlargement, so greatly needed. The actual building will not begin until a large part of the amount needed has been paid in, and meantime all that is received is bearing interest. How much better this plan than building first and paying interest on borrowed money?

The Pageant of Royal Service was very impressive, and will be shown to many of our women at their Associational meetings. This is meant to stimulate subscribing to our own splendid magazine called Royal Service, which helps us along so many lines. This summer is the special time for securing subscriptions at 25 cents apiece. Ask each member to take it and read it diligently.

"How far this little candle sheds its light!"

Two ladies, from Texas and Mississippi, spoke of receiving help from these columns

in their task of editing pages in their own papers or in other lines of work. Of course, Kentucky women frequently express appreciation. Is any honest effort for God allowed to be fruitless?

Many notable talks were made by our missionaries, and a delightful occasion was the luncheon on Saturday in their honor, while everybody enjoyed the social hour at the Rice Hotel, where we made new friends and renewed the friendships of other days. An automobile ride was tendered us one afternoon, a refreshment indeed after long hours of the business session, affording us a sight of the beautiful homes and attractive buildings of the prosperous city of Houston. To become better acquainted with some of the splendid Texas women, was one of the joys of the meeting. Other points of particular interest will be written about later.

E. S. Broadus,
Vice-President for Kentucky.

Monthly Remittances.

The forward movement the State Board has taken (that of sending one-twelfth of the apportionment for Home and Foreign Missions to the Boards each month) makes it necessary for our women to send the money to W. M. U. headquarters monthly instead of quarterly, as so many have been doing.

If the State Board has to borrow money and pay interest on it in order to do this, we do not want it to be the fault of the women.

Notice this:

If 800 societies have \$1.00 each in their treasury and fail to send it in the first month, and the Board falls short just that much and has to borrow the \$800, it will cost them \$4.00 interest the first month and for the year \$48.00.

If our 800 societies each had \$5.00 per month and failed to send it in, the interest would be \$20.00 per month of \$240 per year.

So you see we don't want to rob God of even one month's interest.

We will send the quarterly report blanks as usual and you can just report the quarterly work, but we will ask that the treasurers send the money on hand monthly.

If you are accustomed to sending the

money through your church or association- al treasurer, please notify him of the need for a monthly remittance.

Please call the attention of the treasurer of your society to this, and it might be well to ask at each meeting if the money was sent the previous month, as a sort of reminder.

May we not count on your hearty co-operation in this matter?

Mrs. Kate C. Hinkle.

Receipts for Year ending April 30th, 1915 From W. M. U. of Kentucky.

Foreign Missions, \$12,057.05; Home Missions, \$7,238.73; S. S. B., \$164.71 (for Bible Fund); State Missions, \$5,658.57; Colored Worker, \$149.85; Training School Expense, \$465.27; Training School Enlargement, \$3,226.41; Judson Centennial, \$1,220.65; Judson Centennial sent direct to the Foreign Mission Board, \$3,857.21; Home Church Building Loan Fund, \$119.38; Ky. Baptist Education Society, \$663.67; Miscellaneous, \$154.71. Total, \$34,976.21.

Total for year ending April 30th, 1914, \$27,812.36.

Total for year ending April 30th, 1915, \$34,976.21.

Janie Cree Bose, Office Secretary.

Teacher Training Items.

(Continued from Page 9.)

Vogt, Long Run Ass'n; Mrs Sallie McClendon, Graves County Ass'n; Mrs J. J. Field, Long Run Ass'n; Dr. J. G. Bow, Long Run Ass'n; Miss Millard F. Holdcomb, Three Forks Ass'n.

Normal Diplomas in Kentucky during April, 1915:

Ohio Valley Ass'n—Mr. L. O. Stapp, Miss Nell Powell, Miss Mabel Powell, Miss Katve Florence Veatch, Miss Matty Head.

Three Forks Ass'n—Millard F. Holcomb, James B. Summers, Kirby Cornett, C. Eldridge Hurst.

East Union Ass'n—J. U. Snyder, Charles Smallwood, Bianche Foley, Beatrice Baker, Belle LeForce, Mrs J. D. LeForce.

Graves County Ass'n—Mrs Charles L. Albritton, Chas. L. Albritton.

Elkhorn Ass'n—Mrs J. Q. Rowe.

S. District Ass'n—Mrs. D. R. Duell.

RECEIPTS FROM APRIL 1st TO MAY 5th,
1915.

Allen Ass'n—Scottsville S. S., W. D. P., \$91.20; Liberty S. S., Miss E. M., \$6.36.

Baptist Ass'n—Mt. Freedom ch. and S. S., Rev. H., \$9.72; Lawrenceburg ch., Miss M. P., \$28.75; Lawrenceburg S. S., \$59.65; Sand Spring S. S., Miss M. F. W., \$4.15; Kirkwood ch., Rev. E. R., \$10; Sand Spring ch., J. B. S., \$21.75; Salvisa ch., Mrs. C. A. F., \$27.50; Kirkwood S. S., E. B., \$4.63; Lawrenceburg ch., Miss M. P., \$31.

Barren River Ass'n—Individual, Mrs. W. O. S., \$1; Fountain Run ch., Rev. R. H. S., \$14.65; Summer Shade ch., Rev. T. F. G., \$5.

Bell County Ass'n—Blanche S. S., Miss S. H., \$2.78; Blanche L. A., \$1; Mt. Hebron ch., \$10.52; Mt. Hebron S. S., Mrs. E. G., \$1.73; New Liberty ch., W. T. R., \$1.50; Pineville ch., F. R. W., \$14.50.

Bethel Ass'n—Pembroke B. Y. P. U., Miss S. McC., \$7.50; New Union S. S., C. S. L., \$1.50; 1st ch., Hopkinsville S. S., H. H. A., \$172.66; Pembroke S. S., \$92.80; South Union S. S., H. H. A., \$66.66; Trenton S. S., H. H. A., \$170.97; Elkton S. S., \$62.80; H. H. A., \$518.13; Salem S. S., H. H. A., \$13.21; Walnut Grove, H. H. A., \$125; Pembroke ch., \$207.50; Spring Valley ch., \$24.10; Locust Grove ch., \$100; Pembroke B. Y. P. U., H. H. A., \$6.25; New Hope ch., J. F. B., \$35; Auburn ch., A. McC., \$78.10; Bethel ch., \$19.85; 1st ch. Hopkinsville, \$258.76; 1st ch. Russellville, \$294.72; H. H. A., \$111.12; H. H. A., \$679.10; Auburn ch., A. McC., \$11.00; Salem ch., H. H. A., \$150.00.

Blackford Ass'n—New Hope ch., U. F. R., \$5.04; Individual gift, Mrs. E. L. B., \$2; Hawesville S. S., L. B., \$4.70; H. D. B., \$155.00.

Blood River Ass'n—Murray ch., Eld. H. B. T., \$137.69; West Fork S. S., C. L. S., \$15.65; Murray ch., Eld. H. B. T., \$575.62; Hon. J. L. P., \$515.93; Ledbetter ch., Hon. J. L. P., \$25.21.

Boone's Creek Ass'n—1st ch. Winchester S. S., \$70; Providence S. S., \$8.70; Ephesus ch., W. P. H., \$30.57; Central ch., W. P. H., \$192.81; Union City S. S., W. F. P., \$5.55; 1st ch., Winchester, \$475.00; Allansville S. S., \$5.00; Central ch., Winchester, W. P. H., \$5; Mt. Olivet ch., E. D. P., \$204.70.

Bracken Ass'n—Carlisle S. S., J. P. T.,

\$30; Farmers S. S., J. W. I., \$4; Oakridge S. S., G. M. S., \$2.70; Mayslick S. S., R. M. Y., \$27; Salem ch., W. K. H., \$2; Millersburg S. S., Miss A. W., \$30; Millersburg ch., Miss N. D. C., \$40.95; Mt. Pisgah ch., \$17.46; Flemingsburg ch., \$30; Dover S. S., \$10; Mt. Olivet S. S., \$3.61; Ewing S. S., \$3.35; Ewing ch., \$27; Lewisburg S. S., T. F. G., \$10.04; Locust Grove ch., J. M. McC., \$3; Carlisle ch., W. F. T., \$41.95; Mt. Sterling ch., W. T. T., \$87.90; Lewisburg ch., \$45.62; Mayslick ch., T. F. G., \$50; Mayslick, 1st ch., W. R. W., \$220; Hazelton ch., Mrs. J. E. H., \$30.09.

Breckinridge Ass'n—Walnut Grove ch., Rev. E. O. C., \$5.72; Hite's Run ch., \$1.50; Glean Dean ch., \$7.75; Glen Dean S. S., \$112.70; Stephensport S. S., \$15.60; Cloverport S. S., \$20.70; Friendship S. S., Miss V. P., \$1.07; Black Lick ch., \$12; English S. S., \$6.50; Hardinsburg ch., Rev. E. O. C., \$12.60; Glen Dean or Goshen ch., \$12.20; Stephensport ch., Rev. E. O. C., \$1.54; Stephensport ch., \$24.75; Walnut Grove ch., E. O. C., \$1.92.

Campbell Co. Ass'n—Newport ch., R. E. K., \$120.38; Newport S. S., \$100; Wilmington S. S., B. S., \$3.75; Oak Island S. S., Miss N. N., \$2; Newport S. S., Mrs. S. R., \$1; Silver Grove ch., L. C. G., \$4.25; Flag Spring ch., \$8.18; Second Twelve Mile, A. F. B., \$8.21; Pleasant Ridge ch., A. F. B., \$4.06; Bellevue ch., W. A. M., 88.65; Butler S. S., Mrs. A. R. W., \$52.04; Bellevue S. S., C. P. H., \$20.00; 1st ch., Newport, R. E. K., \$42.56.

Central Ass'n—Willisburg S. S., W. E. H., \$3.61; Rockbridge ch., W. H. S., \$10; Lebanon ch., \$92.78; Lebanon S. S., J. A. B., \$33.75; Springfield ch., J. A. B., \$145.70.

Concord Ass'n—New Liberty S. S., W. S. B., \$60; Individual gift, Mrs. M. E. G., \$50; Individual, a friend, 40c; Cedar Hill ch., J. B. H., \$16.25; Owenton ch., \$177.50; Owenton S. S., \$80.00; Owenton B. Y. P. U., \$5.00; Long Ridge, \$210.00; Squiresville, \$8.88; Greenup Fork, 71.26; Mt. Pleasant S. S., \$5.00; Gratz, \$6.75; Mussel Shoals, J. B. H., \$2.00; New Liberty ch., R. L. W., \$215.00; Dallasburg ch., J. T. A., 200.00.

Crittenden Ass'n—J. W. S., \$195.24; Crittenden ch., I. W. B., \$38.00.

Daviess Co. Ass'n—Dawson S. S., Miss S. L. W., \$29.74; Stanley S. S., Mrs. J. H., \$2; Livermore S. S., C. W. T., \$31; Individual,

Mrs. L. F., \$2; Yellow Creek S. S., \$20.50; Seven Hills S. S., \$1; Richland ch., \$10; Richland S. S., \$5; Yellow Creek ch., \$53.50; Glenville ch., \$56; Rumsey ch., \$4; Calhoun B. Y. P. U., \$20.50; South Hampton, \$60; Sorgho ch., \$22.26; Maceo ch., \$30; Brushy, Fork S. S., \$3.73; Brushey Fork ch., \$22; Buck Creek, \$45.43; Station ch., \$14.66; Oak Grove, \$45.01; Mt. Vernon, \$1.50; 1st ch., Owensboro, \$443.54; Bethabara, \$166; Calhoun ch., \$66.38; Calhoun S. S., \$51.77; Karrs Grove, \$10.17; Whitesville ch., \$76.76; Sugar Grove, \$5.40; Pleasant Grove, \$13; South Hampton, \$37.55; Curdsville, \$10.37; Panther Creek, \$31.33; Mt. Liberty, \$48; Walnut st. ch., \$75; 3rd ch., Owensboro, \$294.10; Livermore, W. H. R., \$60.00; Sugar Grove ch., Mrs. H. E., \$1.00; Hopewell ch., O. E. G., \$7.25.

East Lynn Ass'n—Pleasant Hill ch., Mrs. T. P. D., \$25.56; Good Hope ch., \$61.11; Good Hope ch., W. M. U., \$11.24; Rolling Fork ch., \$60.05; Union Band ch., J. T. McF., \$50.00.

East Union Ass'n—Boston S. S., F. C. F., \$3.50; Boston S. S., F. C. F., \$4; Jellico, 1st ch., Dr. J. E. M., \$777; Jellico S. S., \$155; Jellico B. Y. P. U., Miss S. S., \$10.

Edmonson Ass'n—Silent Grove ch., \$3.30; Silen Grove S. S., \$19.45; L. A., T. S. L., \$7.25; Individual, L. B. D., \$10; Individual, Mrs. L. B. D., \$10; Individual, Miss T. McI., \$10; Joppa S. S., M. McC., \$5.17; Individual, Miss T. McI., \$20.

Elkhorn Ass'n—Mt. Vernon S. S., P. H., \$15.50; 1st ch., Lexington, J. W. P., \$40; Dry Run S. S., Rev. A. S., \$6; South Elkhorn ch., \$35.56; Midway ch., \$32.20; East Hickman S. S., \$11.86; Nicholasville ch., \$90.48; Hillsboro ch., \$38.08; Lexington ch., \$158.85; Lexington S. S., \$147.82; Lexington, Calvary, \$61.47; Lexington, 5th st., \$140; Georgetown ch., \$71.74; Georgetown S. S., \$200; Porter Memorial ch., \$33.13; Bryan Sta. ch., \$1; Great Crossings ch., \$39; Mt. Pleasant ch., \$21.65; Mt. Pleasant S. S., \$14; Mt. Freedom ch., \$92.25; Versailles ch., M. T., \$125; Nicholasville ch., J. A. B., \$26.51; Millville S. S., B. F. F., \$25; Stamping Ground ch., Rev. W. L. S., \$107.20; 1st ch., Lexington, \$10; East Hickman, \$40; David's Fork ch., \$35; 5th st., Lexington, M. T., \$75.75; 1st ch., Lexington, \$35; Calvary, \$40.17; 5th st. ch., M. T., \$5.70; Versailles,

\$35.00; Silas, \$17.00; Nicholasville, \$61.59; Mt. Vernon, \$250.00; George town, \$152.67; Midway, \$39.90; Glenn Creek, \$33.20; 1st ch., Lexington, \$154.00; Millville, M. T., \$5.01; Corinth ch., W. J., \$88.11; Paris ch., W. H. C., \$150.50; Paris S. S., C. O. H., \$80.00.

Enterprise Ass'n—Rev. D. A. D., \$3.54; Pikeville S. S., Rev. C. C. D., \$30; Licking River ch., Mrs. C. P., \$2; Lakeville ch., Miss N. L. P., \$1; Van Lear ch., \$10.31; Van Lear S. S., Rev. T. U. F., \$2.69; 1st ch., Paintsville, J. L. P., \$50; Pikeville ch., Rev. C. C. D., \$75.00; D. A. D., \$2.03.

Franklin Ass'n—North Fork S. S., C. M. J., \$23; Bethel S. S., L. M., \$8; Benson S. S., Rev. J. O. W., \$20; Individual, A. A. M., \$20; Cedar Grove S. S., W. T. P., \$3.55; Buck Run ch., \$44.30; Buck Run S. S., Rev. J. H. B., \$4.25; Frankfort ch., \$107.82; Frankfort S. S., W. S. F., \$325; Evergreen ch., \$60; Evergreen S. S., A. C. M., \$9; Mt. Carmel ch., E. P., \$6.15; North Fork ch., Rev. J. O. W., \$42; Union Bap. ch., W. M. C., \$4.40; Frankfort ch., J. H. M., \$3.25.

Freedom Ass'n—Stoney Point ch. and S. S., T. A. C., \$10; Burksville ch., Mrs. W. H., C., \$60.16; Central Union ch., E. H., \$10.

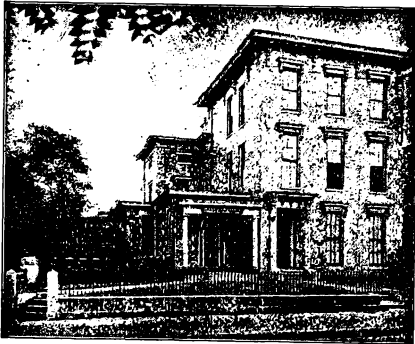
Gasper River Ass'n—Salem S. S., A. P. K., \$2.66; Monticello S. S., J. H. T., \$5; Big Muddy, W. F. B., \$4; Monticello ch., L. A., \$50; Monticello S. S., J. H. T., \$3.40; Salem ch., Mrs. M. H., \$7.50; Sandy Creek ch., W. A. K., \$3.61; W. A. K., \$45.00; Sandy Creek ch., W. A. K., \$4.06; Salem ch., \$4.72; New Liberty, W. A. K., 2.35.

Goshen Ass'n—Pilgrim ch., \$1.15; Caneyville ch., W. B. M., \$35.68; S. C. R., \$23.29; Liberty and Little Flock ch., J. N. L., \$11.83; Caneyville ch., W. B. M., \$10; Leitchfield ch., H. A. L., \$65.

Graves Co. Ass'n—Melber S. S., Mrs. J. S., \$4.16; Cuba S. S., I. E. V., \$5.57; Mayfield ch., \$254.80; Mayfield S. S., \$225; Sedalia ch., \$10.59; Sedalia S. S., \$15.25; Oak Grove S. S., \$4.55; Liberty S. S., \$5; Mt. Olivet S. S., \$20.92; Dublin S. S., \$7.48; Chapel Hill S. S., 4.80; Hickory Grove S. S., W. M. W., \$2.32; Cuba ch., I. E. V., \$4.75; W. M. W., \$5.92; Mayfield, W. M. W., \$12.75; Mayfield ch., \$71.94; Hackory Grove, \$5.00; Liberty, \$73.50; Dublin, \$18.41; Sharon, \$13.50; Trase Creek, W. M. W., \$3.75.

(Continued)

A CHAPEL FOR PATRONS



LEE E. CRALLE

Funeral Director

S. W. Cor. 6th and Chestnut Sts.

Telephone Main 430

LOUISVILLE, - KENTUCKY

We Print College

**Catalogues, Booklets,
Phamphlets, Tracts,
Wedding Invitations,
Cards,**

Anouncements Etc.

MOLL & CO.

Incorporated

120 S. First St. Louisville, Ky.

Home Phone 351 Correspondence Solicited

BLUM ART GLASS CO.

INCORPORATED

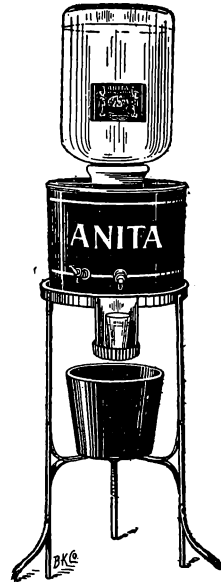
Maker of Church Windows

640 Third St. Louisville, Ky.

“ANITA”

AMERICAN LIGHTEST WATER

Always Pure, Fresh & Invigorating



THE BEST COOLER ON THE MARKET

Anita Spring Water Co.

INCORPORATED

PHONES { Home 4520
Cumb. M. 1468-A

Our New Plant, 210-212 Pearl St.
LOUISVILLE, KY.

-----WE ARE-----

MANUFACTURERS OF

MONUMENTS

Of High Class, But Moderate Prices

Peter-Burghard Stone Co.

SALESROOM

317 W. Jefferson St.

PLANT

13-14 Maple St. Louisville, Ky.

HOLMAN BIBLES

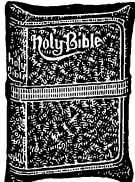
Durable Flexible Bindings



Will not Break in the Back

FOR CHILDREN

PICTORIAL BIBLES WITH HELPS



Size 5½ x 3½ inches.

The text is self-pronouncing, by the aid of which children can learn to pronounce the difficult Scripture proper names.

Specimen of Type.

WHOSOEVER believeth that Jē'sus is the Christ is born of God: and every one that loveth him

With beautiful photo views of scenes in Bible lands distributed throughout the text. Also maps of Bible lands in colors. Also new

Practical Helps to Bible Study, especially designed for instructing children in scriptural information.

No. 91. French Seal Leather, overlapping covers, round corners, gold edges, gold titles.

Publishers' Price \$1.30 Our Price--Post Paid, \$1.00

COLORED PICTURE EDITION

Portraying in natural colors, scenes and places taken from nature and life in the Holy Land.

No. 92. Same as No. 91, but with Beautifully Colored Pictures

Publishers' Price \$1.50 Our Price--Post Paid, \$1.20

FOR INTERMEDIATE S. S. SCHOLARS



Large Clear Black Type. Self-Pronouncing containing Helps to Bible Study, 4000 Questions and Answers, Maps in Colors, and Presentation Page. A Beautiful Gift Bible.

Specimen of Type.

22 And the prophet Is'ra-el, and said unto thyself, and mark, and for at the return of t

Size 7 x 5 inches.

No. 21. Divinity Circuit Style. Bound in French Seal Leather, round corners, red under gold edges, with silk head bands and purple silk marker, gold titles, etc.

Publishers' Price \$1.60 Our Price--Post Paid, \$1.35

No. 22. R.L. Red Letter Scholars' Bible, same Bible as No. 21, with all the Sayings of Christ printed in Red, and with Red and gold INLAID PANEL SIDE TITLES, also Beautifully Colored Pictures,

Publishers' Price \$2.10 Our Price--Post Paid, \$1.75

FOR ADULTS, TEACHERS AND PREACHERS



and all who would study the Word of God intelligently this edition is unsurpassed. The type is large, clear Bourgeois. Self-Pronouncing, with liberal space between the words and lines, which makes it easy to read.

Size 8 x 5½ inches.

Specimen of Type.

¶ From that time Jē'sus to preach, and to say, "Repe the kingdom of heaven is

Containing New Copyrighted Helps by Rev. F. N. PELOUBET, D. D. a Treasury of Biblical Information, practical comparative concordance, Oriental Light on the Bible, Four Thousand Questions and Answers, New Colored Maps.

No. 47. Divinity Circuit Teachers' Bible, French Seal Leather, red under gold edges, Silk Head bands and Silk Marker.

Publishers' Price \$2.70

Our Price--Post Paid, \$2.25

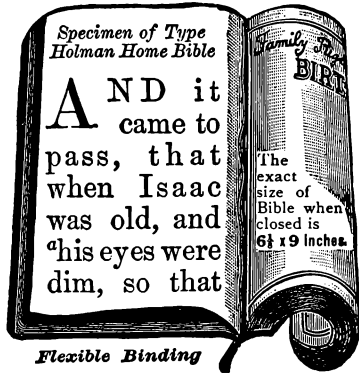
No. 81. R.L. Red Letter Teachers' Bible. The Words of Christ in the New Testament, Old Testament Passages Alluded to by Christ, Various Prophecies Relating to Christ in the Old Testament, etc., all PRINTED IN RED. Binding same as described above and same large Self-Pronouncing type.

Publishers' Price \$3.20 Our Price--Post Paid, \$2.70

No. 73X. Holman India Paper, Genuine Morocco, Leather Lined, Silk Sewed, Divinity Circuit, round corners, carmine under gold edges, silk head bands and silk marker, same type and Helps as above.

Publishers' Price \$7.75 Our Price--Post Paid, \$5.00

FOR OLD FOLKS and THE HOME



Specimen of Type
Holman Home Bible

AND it came to pass, that when Isaac was old, and "his eyes were dim, so that

The exact size of Bible when closed is 6½ x 9 inches.

Flexible Binding

Printed from large Clear Pica Type, with Marginal References, Family Record and Maps. This HOME BIBLE is new and very desirable for every day use, containing all the advantages of a Family Bible in a compact size that can be easily handled, with Record for Births, Marriages and Deaths. The best Bible obtainable for old folks who need extra large clear print and a light-weight book.

No. 2014. Durably Bound in French Seal Leather, full flexible covers, round corners, red under gold edges, silk head bands and silk marker, gold titles.

Publishers' Price \$3.00 Our Price--Post Paid, \$2.35

SEND ALL YOUR BOOK ORDERS TO

Baptist Book Concern

Incorporated

650 FOURTH AVENUE
LOUISVILLE, KY.