

# Kentucky Mission Monthly

OFFICIAL ORGAN OF KENTUCKY BAPTISTS

Entered Feb. 5, 1903, at Louisville, Ky., as Second-class matter, under act of Congress, March 6, 1879.

DECEMBER, 1915

25 Cents a Year

W. D. POWELL, EDITOR  
MISS E. S. BROADUS, EDITOR WOMAN'S DEPT.  
A. E. WOHLBOLD, BUSINESS MANAGER

**GENERAL ASSOCIATION OF BAPTISTS IN KENTUCKY,  
Officers**

A. Gatliff, Moderator F. D. Perkins, Asst. Moderator W. M. Wood, Asst. Moderator,  
John L. Hill, Sec'y A. E. Wohlbold, Asst. Sec'y.

**Executive Board**

W. M. Stallings, Chr. Georgetown, Ky. E. C. Farmer, Rec. Sec. Louisville, Ky.  
A. L. Crawley, Asst. Sec. Louisville, Ky.

C. M. Thompson, Hopkinsville	E. O. Cottrell, Guthrie	H. L. Winburn, Louisville
C. W. Elsey, Cynthia	R. G. Bowers, Paducah	W. W. Horner, "
B. H. Lovelace, Franklin	W. C. Pierce, Ashland	W. P. Stuart, "
W. S. Farmer, Frankfort	L. C. Kelly, Campbells'le	N. C. Shouse, "
S. P. Martin, Owensboro	M. D. Early, Stanford	G. W. Argabrite, "
W. E. Hunter, Somers	H. B. Taylor, Murray	O. M. Huey, "
A. Gatliff, Williamsburg	W. M. Wood, Mayfield	Thos. D. Osborne, "
J. A. Booth, Horse Cave	T. J. Porter, Lebanon	R. L. Carter, "
J. W. Porter, Lexington	N. F. Jones, Dayton	W. G. Everson, "
M. E. Staley, Madisonville	G. E. Hayes, Louisville	J. J. Clear, "
	W. W. Landrum, "	

**Baptist State Board of Missions**

W. D. Powell, Cor. Secretary and Treasurer; 205 E. Chestnut, Louisville, Ky.

**Kentucky Central Committee**

Miss E. S. Broadus, Chairman; 1227 Third Ave. Louisville, Ky.

Mrs. Kate Coleman Hinkle, Secretary, 205 E. Chestnut St., Louisville, Ky.

**Baptist Minister's Aid Society**

J. D. Maddox, Corresponding Secretary; 700 Bolivar St., Owensboro, Ky.

**Baptist Education Society of Kentucky**

F. D. Perkins, Corresponding Secretary; 310 E. Oak St., Louisville, Ky.

**Orphan's Home**

Thos. J. Humphreys, Treasurer, 804 Lincoln Building, Louisville, Ky.

THE FOREIGN, HOME and KENTUCKY MISSION MONTHLY, all for 60c PER YEAR.

Published Monthly at 205 East Chestnut St., Louisville, Kentucky

# Florida

Travel there on the "St. Louis Special" equipped with electric lighted steel coaches and through drawing room sleeping cars to Jacksonville and Asheville.

New dining car service.

In addition, drawing room sleeping cars from Asheville to Jacksonville insure every comfort for trip through "The Land of the Sky", the only scenic route to Florida. Very low homeseekers' fares and winter tourist fares now in effect.

Stopovers and other special features.

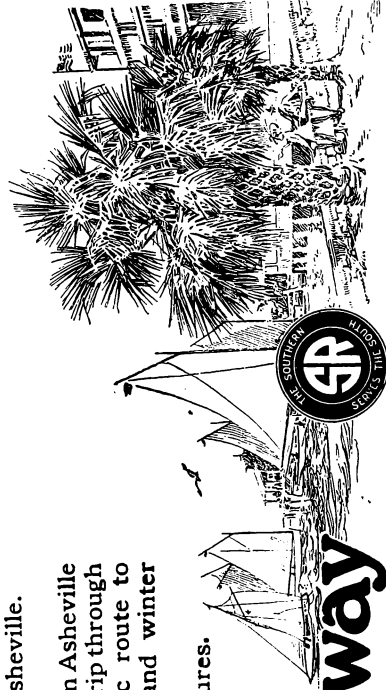
Get full information and fares from the  
Local Southern Agent, or write to

B. H. Todd, District Passenger Agent, Louisville, Ky.

## Southern Railway

*PAFFMIER CARRIER OF THE SOUTH*

The Southern Railway is the direct line to Asheville, Aiken, Augusta, Charleston, Columbia, Savannah, Summerville and other southern resorts.



# The Kentucky Mission Monthly

"LET HIM THAT HEARETH SAY COME"

VOL. XV.

DECEMBER, 1915

No. 8

## ... EDITORIAL ...

W. D. POWELL ..... Editor

### THE GROWTH OF OUR WORK IN KENTUCKY.

It rejoices our hearts to see how near our work lies to the hearts of our Baptist people. This is put in evidence by the great number of Churches, Sunday Schools and Woman's Missionary Societies which co-operated with our work this past year that did not the year before. We had a notable growth in State Missions last year as well as Home and Foreign. Apparently there was a drop in State Missions, but this was because of \$14,000, which came to us the year before from the Harris Fund for Church Building in one sum, that greatly augmented the receipts for 1914. In our publicity work we are reaching every Church, every pastor, every Sunday School and every Woman's Missionary Society in the State. The results are most satisfactory. We never send out an appeal that does not bring to us generous results. The promptness and liberality of the people show that their hearts are with us. We thank God and take courage.

We are about to have additional burdens placed upon us by being called upon by the Unification Plan to raise funds monthly for all of our denominational work. We must ask that Churches, Sunday Schools and Mission Societies send us offerings for State, Home and Foreign Missions each month. Our account in bank must not become too large.

### COMPARATIVE MISSION GROWTH IN THE SOUTH.

During the past ten years the annual increase for Missions in Texas has been \$17,788.95; North Carolina, \$9,571.54; Virginia, \$9,322.36; South Carolina, \$8,912.01; Kentucky, \$8,691.46; Georgia, \$6,829.82; Tennes-

see, \$5,380.54; Missouri, \$4,479.60; Mississippi, \$4,134.40; Alabama, \$4,049.33; Oklahoma, \$3,609.03; Florida, \$2,323.36; Arkansas, \$2,146.89; Maryland, \$1,815.37; Louisiana, \$1,809.25. The standing of Kentucky is good, but we can and must make it much better. We call upon our people to make liberal, systematic gifts to all phases of our work. Let those who have exceeded us in gifts stimulate us to greater love and loyalty.

Rev. W. D. Powell, Secretary,  
Louisville, Ky.:

Dear Brother: I am delighted to hear the good report from your late meeting. It seems to me that you are now practically off the rocks. But the only way to keep off the rocks is to keep plenty of water in the channel.

I read the program for the Secretary's meeting. I will try and be with you, but there are many eventualities between here and there.

I very cordially congratulate you on the success of your work.

Very sincerely,  
J. B. Gambrell.

The women of Texas raised for all purposes this year, \$250,000. This is glorious. Our loyal Kentucky women must push collections with all vigor possible.

### THE LOVE OF CONQUEST.

There is no limit to the initiative of the American people. The spiritual conquest of the forces for evil in our State is a stupendous undertaking. But our forefathers cut the roads through the dense forests. These roads we have since macadamized.

There is madness for wealth, indifference to religion and devotion to pleasure among our people. This weakens our powers of conquest.

When I was a boy, there were not ten miles of railroad west of the Mississippi.

We traveled on palatial steamboats on the father of waters. I remember well when candle snuffers graced the tables of rich and poor. Coal oil came later. So did telephones, wireless telegraphy, sewing machines and cooking stoves.

The thoughts of cutting fire wood slackened my pace as I went from school. That was before coal had been offered for sale in Pennsylvania.

The great tunnels and canals of the world have been cut in my recollection.

No material difficulties make men afraid. Why should we grow timid at the spiritual difficulties which confront us?

The spiritual conquests I have witnessed far outshine the material advances I have seen. China, Japan, India, Mexico, Central and South America have been opened to the Gospel since I could read and write. Praise His name, we can do all things through Christ who strengthens us.

---

#### THE TRUE CHRISTIAN.

---

He makes broad his sympathies, rather than his phylacteries. He is kind to his employees. It is poor grace to stint those who work for us and try to compensate by spectacular charities.

He possesses the faith which he professes. His life interprets the gospel which he preaches. No explanations are required. His life is translucent as well as transparent. To him discipleship means baptism and church membership.

Religious conversation flows as naturally from his lips as water from an artesian well. He is no wooden pump concern. He is loyal to Christ, devoted to his church and faithful to his associates in business.

His chief concern is for the lost of the world whether in Kentucky, America or on foreign shores. He takes a large view of life and is delighted with hard tasks.

Our Commonwealth will be largely saved through the instrumentality of such Christians. Their number is constantly increasing.

---

#### OVERCOMING DIFFICULTIES.

---

Opposition is only a grindstone to sharpen us for the tasks God would have us perform. The progress of the world has been by overcoming difficulties. Spanish was

easy enough when I had mastered it. A complicated trade is easy to the one who has learned it. Last Sunday morning I met a building committee where a church debt of several thousand dollars was to be secured. They said, "It cannot be done. It will be a miracle." At night, when five hundred dollars more than was needed had been raised, some said, "That was easily done."

I have been on a ship in a great storm. It plowed its way through the waves which were piled high as mountains because it had power within its frame and a captain who knew how to guide it. Christ wants overcomers.

---

#### IMPORTANT BOARD MEETING.

---

The State Board is called to meet on Tuesday, December 21st, at the Hotel Waterson in this City, at 10:00 a. m. This will be a meeting of unusual importance and sincerely trust that every member will be present. Several matters of greatest importance to the welfare of our work will be under consideration.

W. D. Powell, Cor. Sec.

---

#### MOUNTAIN SCHOOL DAY.

---

On December 19th every Sunday School in Kentucky ought to make a liberal contribution to the Education Society for Mountain school work.

Educated men are the leaders in all lines of business. We need an educational passion. Let Everybody help.

Brother Z. P. Hamilton had been to Casey County where he planned a new church building. He walked forty-five miles the day he reached home and found my letter inclosing a check for \$86.65 with which to purchase a horse. Much of this was given by his fellow workers. He cried for joy, like a big boy, when his wife broke the good news to him.

---

All the Southern States are awakening to the distressing needs of our Baptist schools. The situation in Georgia and some other States is pathetic. Large sums must be raised in the near future or certain schools will greatly suffer.

**OUR KENTUCKY BAPTIST PROGRAM.****Baptist Team Work.**

We should put on a State-wide campaign to be conducted by a Baptist Team that would reach the strategic points in our entire Commonwealth in one week. This would enlighten, inform and enthuse our Pastors and Churches and enlist their sympathies and systematic contributions for all of our denominational work. We must acquaint the people with the needs and possibilities of our work. We will find that enlistment lies largely with the Pastors.

Our women must be more thoroughly enlisted. There should be a Woman's Missionary Society in every Baptist Church in Kentucky.

**Evangelism.**

We must stress evangelism. This is the fundamental principle as taught in the New Testament. We should appoint a few additional State Evangelists who like the men of Issachar have "understanding of their times in what Israel ought to do." These men when they have the right spirit, like that of Caleb, "shall go into the land and possess it."

**Increasing Co-operative Missionaries.**

We must stimulate in every way possible an Every-Member Canvass, the adoption of the duplex envelope and systematic, proportionate gifts for all denominational work, sent to this office monthly.

We have done much in the past few years in the development of our Associations and the cultivation of the Associational consciousness. It is wise to throw the work and responsibility on the local forces. The conception of the District Association of the real scope of our Missionary work, which is to evangelize, baptize and teach the things commanded, has been broadened. We should multiply the number of Co-operative Missionaries until the territory of the entire State shall have been covered during the next twelve months and the Churches through the District Association brought into the sympathetic support of all that we are undertaking to do. "Associational Efficiency" should be our slogan; for the Association lies nearest to each local Baptist Church which is our unit.

**A Five-Year Plan.**

We should at this time formulate a program for the next five years in which we shall set as our goal: Our Mission offerings carried to \$80,000 annually for State Missions, \$80,000 for Foreign Missions and \$60,000 for Home Missions; the contributions to Education and Benevolences doubled; one-half million endowment raised for our Schools and Colleges and necessary equipment provided for the Baptist Children's Home.

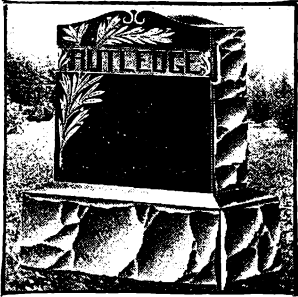
**Enlistment From the Standpoint of Efficiency and Economy.**

In putting on our Enlistment work, there are two systems, the volunteer and the paid. I do not hesitate to say that it is my firm conviction that the volunteer is more satisfactory and far-reaching in permanent results than the paid. I believe that a number of pastors and leading laymen can be gathered together at some central point in a District Association and by spending a day with them, we can plan for the visiting of every Church in the Association, together with an Every-Member Canvass, absolutely without any expense and that the increase will be much larger than if the work was done by a paid agent. There is one Association in Georgia where two or three laymen visit every Church in the Association each year and the increase in their gifts to State, Home and Foreign Missions have been very notable.

Texas Baptists had a great Convention in Austin. There was given during the year for State Missions \$117,721.62. Last year there was a deficit of \$52,000 on State Missions which has been reduced to \$38,000. As usual the Texas Baptists attribute the failure to get more money to a rainy Sunday. \$21,085 was given for Education. Much more was needed. Texas is a great State and Texas Baptists are a great people. They are very prosperous and it is to be feared that materialism hinders their consecration and devotion to our Lord's cause just as it does in dear old Kentucky.

State Conventions have been held in many of our Southern States. The Georgia Convention reports an indebtedness of \$350,000. The debt on the State Board has been greatly reduced.

We are Manufacturers of



## Monuments and Markers

MADE OF BEST GRANITE

# Geo. Panke Co.

—Incorporated—

630 E. JEFFERSON ST., Bet. Clay and Hancock

Phones, City 5237 Main 1054

### "BAPTIST MISSIONS IN THE SOUTH."

This is a most delightful and fascinating book by Dr. Victor I. Masters, of the Home Board.

It is just from the press and the first copy I received so gripped me that I read fully a third of it before I could lay it down.

The book was written at the suggestion of the State Secretaries. The reading gives one a desire for a deeper knowledge of the history of Missions in the South.

Much of it is as interesting as a romance.

While it is instructive and pleasing for general reading, it is especially valuable to ministers and as a Manual for Mission Study Classes. The binding and workmanship is of a high order and we predict for it a wide sale and a useful career.

### NO NAME.

Some one has sent to this office sixty cents for subscription to the three Journals without giving any name or address, even the postmark was so indistinct that it could not be read. Can any one give us information regarding this?

The State Board confidently expects every Church to whom aid has been given during the present year to put on an Every-Member Canvass during the first three months and try to come to self-support and to raise funds for all denominational purposes. We hope that none will overlook or forget this important matter.

### "A MAN AND HIS MONEY."

This splendid book by Dr. H. L. Winburn ought to have a large circulation.

The author is clear and forceful in his style and makes an unanswerable appeal to the judgment of the business man.

He shows conclusively that money is an important part of a man's time and service.

We commend the book in unmeasurable terms. It ought to be studied by every Mission Study Class in the State. It is a strong and helpful discussion of a great theme.

Our laymen will appreciate it as an interesting and wise book on a vital subject.

Some of our workers manifest great zeal in securing subscriptions to the three Mission papers and also to our denominational weeklies. Others seem to look with indifference on this important item. I trust that there may be more activity shown by all in this work which means so much to the prosperity of our denomination. The people who give and who show interest in our work are those who know about what we are doing.

### A "Dry" Month.

December is a "dry" month with reference to finances for State, Home and Foreign Missions. The success we had in November shows what can be done when the people have a mind to work. The gifts of our people for November this year more than doubled the gifts for the same month



### TITHING.

#### Over Against the Treasury.

Over against the treasury this day  
The Master sits, while unaware  
Of the celestial Presence still and fair  
The people pass or pause upon their way.

#### Love Does Not Calculate.

Love gives. Perhaps Mary never paused  
to estimate the value of her vase of spike-  
nard. It was Judas who did the figuring.  
Love gives the costliest things at hand, and  
gives without measuring the cost.

#### Before You Die.

"Learn to give  
Money to colleges while you live,  
Don't be silly and think you'll try  
To bother the colleges when you die,  
With codicil this, and codicil that,  
That knowledge may starve while Law  
grows fat,  
For there never was a pitcher that wouldn't  
spill,  
And there's always a flaw in a Baptist will."

#### Missionary Example.

After the death of Miss Emma O. Ambrose, missionary at Toungoo, Burma, an account book was found, some pages of which were headed, "E. O. A. in account with her Father." In the credit column was regularly entered each month one-fifth of her salary. In addition to the regular giving of one-fifth of her salary she was accustomed to make many freewill offerings to the Lord's work. She gave herself and her means to God. Such an example of devotion should be an inspiration to more liberal giving on the part of all the Lord's people.

#### Only a Part.

"Tithing is a part of our stewardship. Tithing should be practiced not simply because it is written 'The earth is the Lord's and the fulness thereof.' The tithe should be paid as a recognition of God's ownership of the whole, just as the tenant pays rent in recognition of the landlord's ownership of our rights in the house or farm. Paying the rent entitles the tenant to use the house or farm, but it does not constitute him owner

of it. Paying tithes does not constitute a man an owner of the nine-tenths that are left."

#### The Great Problem.

In his sermon entitled, "How to be a Christian in Trade," a discourse which illustrates the wonderful combination of practical sagacity with spiritual insight, for which he was so remarkable, Dr. Bushnell says that "the great problem we have now on hand is the christianizing of the money power of the world"; and again, that "what we wait for and are looking hopefully to see is the consecration of the vast money power of the world to the work and cause and kingdom of Jesus Christ. For that day, when it comes, is the morning, so to speak, of the new creation. That tide-wave in the money power can as little be resisted when God brings it to us, as the tides of the sea; and like these also it will flow across the world in a day." Thos. D. Osborne.

#### A Dry Month—Continued

last year. Indeed, it was a banner month. Now all those who have learned the joy of services gladly turn their thoughts and attention to what God gave for us and send us love gifts until the hearts of our Missionaries will be made to rejoice as we send them the well-earned salary at the end of the month so that their hearts may be made to sing for joy while the Yule log burns brightly. The purest joy of a true child of God is in serving others.

#### How to Send Money.

We have ever magnified the importance of the District Association which lies nearest to the Churches. When appeals are made for funds to extend our work, it is our desire that the funds shall be sent through the Treasurers of each District Association that the gifts of the Churches may be properly tabulated and reported to the Association. It might be well to urge the Treasurers to forward the gifts promptly to this office. Sometimes good men unintentionally overlook this important item.

President Brooks of the Texas Convention named no man on a Committee who served last year. This was right and ought to be more generally observed.

**... SUNDAY SCHOOL DEPT ...**

J. M. Price, 205 E. Chestnut, Louisville, Ky.  
Acting Sunday School Secretary

**A-1 Schools in Kentucky.**

Greenville Baptist Sunday School—Rev. R. H. Tandy, Pastor; Mr. John X. Taylor, Superintendent.

Murray Baptist Sunday School, Murray—Rev. H. B. Taylor, Pastor; Mr. Barber McElrath, Superintendent.

Benton Baptist Sunday School, Benton—Rev. N. S. Castleberry, Pastor; Judge Joe L. Price, Superintendent.

Fifth Street Baptist Sunday School, Lexington—Rev. Walter L. Brock, Pastor; Mr. Frank L. Smith, Superintendent.

First Baptist Sunday School, Louisa—Rev. Olus Hamilton, Pastor; Mr. C. C. Hill, Superintendent.

First Baptist Sunday School, Mayfield—Dr. W. M. Wood, Pastor; Mr. E. S. Lowe, Superintendent.

Berea Baptist Sunday School, Berea: Rev. E. B. English, Pastor; Mr. John F. Dean, Superintendent.

Pollard Baptist Sunday School, Ashland: Rev. W. C. Pierce, Pastor; Mr. R. N. May, Superintendent.

Calvary Baptist Sunday School, Lexington: Rev. T. C. Ecton, Pastor; Mr. W. H. Porter, Superintendent.

First Baptist Sunday School, Corbin—Rev. J. T. Pope, Pastor; C. W. Nicholson, Superintendent.

First Baptist Sunday School, Somerset—Dr. W. E. Hunter, Pastor; J. S. Cooper, Superintendent.

Glasgow Baptist Sunday School—Rev. I. D. S. Knight, Pastor; Elisha Dickey, Superintendent.

Blandville Baptist Sunday School—Rev. Thos. H. Hogg, Pastor; E. R. Ransom, Superintendent.

Cherry Corner Baptist Sunday School, Murray—Rev. R. F. Gregory, Pastor; J. E. Houston, Superintendent.

Baptist Tabernacle Sunday School, Louisville—Dr. J. J. Cloar, Pastor; Matt. S. Mann, Superintendent.

First Baptist Sunday School, Jellico, (Tennessee)—Dr. J. E. Martin, Pastor; Z. D. Baird, Superintendent.

Calvert City Baptist Sunday School, Calvert City—Rev. J. P. Riley, Pastor; J. M. Tichenor, Superintendent.

Hyden Baptist Sunday School, Hyden—Rev. John Cunningham, Pastor.

First Baptist Sunday School, Whitesburg—Rev. A. C. Hutson, Pastor; M. D. Lewis, Superintendent.

Mentor Sunday School—Rev. A. R. Abernathy, Pastor; D. B. Jolly, Superintendent.

Standing to date of five leading State, November 30, 1915:

Normal Diplomas—Texas, 5,384; Kentucky, 4,366; Georgia, 3,329; North Carolina, 3,197; Alabama, 2,481.

Red Seals—Kentucky, 836; Texas, 765; Alabama, 394; Tennessee, 372; Georgia, 363.

Blue Seals—Kentucky, 500; Texas, 432; Georgia, 200; Alabama, 199; Tennessee, 169.

Normal Diplomas issued in Kentucky during November:

Bethel Ass'n—Mrs. Buford Rosson, Margaret Levy, Bee Doubleday, Mable Claire Childs, Anita Burnam, Mrs. Robert E. Brady.

Red Seals issued in Kentucky during November:

Long Run Ass'n—Miss Myra B. Wells.

Blue Seals issued in Kentucky during November:

North Bend Ass'n—Mollie T. Judy.

Post Graduate Diplomas issued in Kentucky during November:

Elykhorn Ass'n—Iris Beasley.

Long Run Ass'n—Dr. W. M. Randall.

Gold Seals issued in Kentucky during November:

Elkhorn Ass'n—Minnie Pullen.

The following is a list of Normal Diplomas by Association ending November 30, 1915:

Long Run, 699; Blood River, 455; Elkhorn, 330; North Bend, 266; West Union, 194; Daviess County, 154; Pulaski County, 154; Bethel, 147; Campbell County, 140; Bell County, 89; Nelson, 80; West Kentucky, 77; Graves County, 75; Wayne County, 71; Bracken, 70; South District, 69; Ohio River, 65; Muhlenberg, 63; Little River, 61; Union, 58; North Concord, 58; Ohio County, 56; Baptist, 54; Shelby County, 52; Ohio Valley, 48; Concord, 47; Enterprise, 46; White's Run, 45; Breckinridge, 44; East Union, 43; Mt. Zion, 42; Tate's Creek, 41; Greenup, 39; Three Forks, 39; Franklin, 37; Liberty, 35;



Crittenden, 35; Severn's Valley, 31; Russell's Creek, 28; Salem, 26; Little Bethel, 24; Sulphur Fork, 23; Warren, 23; Boone's Creek, 19; Central, 19; Freedom, 17; Allen, 16; Goshen, 16; Oneida, 13; Laurel River, 12; Simpson, 12; Lynn, 11; Ten Mile, 6; East Lynn, 5; Rockcastle, 5; Upper Cumberland, 2; South Kentucky, 2; Logan Co., 2; Gasper River, 1; Owen County, 1; Blackford, 4; Colored, 4.

### W. D. POWELL—Continued

The Church houses at Jenkins and Burdine are nearing completion. Rev. J. W. Crow, our indefatigable worker, has waited with some impatience for this necessary equipment. There was considerable delay in securing proper deeds. The work is full of encouragement and promise.

Rev. R. F. Doll, one of our splendid workers, resigns to take a pastorate in Owensboro, Ky.

Bowling Green has just completed a beautiful, white temple. This church was one of the first in the State to support a pastor for full time. In 1836 Dr. J. M. Pendleton was called as pastor at a salary of \$400. This was thought wonderful, at that time.

We have hundreds of churches that need to be brought to matured strength through competent pastors. We must stop the emigration of the best youth of the country to the city. The strength of country churches is being sapped to build up city churches.

A church to be efficient must have adequate organization, business methods in finances, a real spirit of liberality, more than sixty per cent of the members actively engaged in church work, a spirit of prayer and personal evangelism and more than fifty per cent giving to current expenses, Missions and benevolence.

Rev. Giles C. Taylor has recently held a good meeting at Stephensburg where there were a number of accessions. He is now in a meeting with Audubon Church at Henderson, Ky., where the Spirit's power is much in evidence. Numbers have been saved and received for baptism.

Buckner Orphans' Home had its struggles for years, until experience had been acquired and they were ready for larger things. It is well to go slow. Last year there was given \$59,598.58. The Home does much in the way of self-support.

We must enlist our Kentucky women before we can catch step with those States which outstrip us because their women are such mighty factors in their Mission work.

Rev. R. A. Barnes reports a good meeting at Cedar Creek Church. There have been twelve conversions.

Preachers must keep in touch with the social problems of the day and the burdens of the people, if they would command the sympathy and support of their congregations. They must make their survey in the fear of God as to their peoples' needs.

We must all make Evangelism our fundamental principle. We must enlighten and enlist our men and women. Brother George W. Truett said that what was needed was a great spirit. "The men of Issachar had understanding of their times to know what Israel ought to do."

The denominational paper is our medium of communication and its circulation ought to have the hearty support of every minister and every worker of the State Board. It is inexcusable to do nothing towards the circulation of the Baptist weekly which not only indoctrinates our people but keeps them informed as to the Lord's work and brings in the funds for the support of Missions and Benevolence.

We should love all who love our Lord but this does not mean that it is wise for us to enter into any entangling alliances that will interfere with our faithfulness, efficiency, progress and happiness.

A certain minister after preaching forty-seven minutes by the watch in one of our Kentucky pulpits said, "Is there any question you would like to ask?" A good woman in an undertone said, "I would like to ask when you are going to quit?"

## ... WOMEN'S DEPARTMENT ...

### Central Committee.

Miss E. S. Broadus.....	Chairman
1227 Third Avenue.	
Mrs. B. G. Rees.....	Treasurer
2326 Longest Avenue.	
Mrs. Kate Coleman Hinkle.....	Secretary
205 East Chestnut, Louisville, Ky .	

### OUR CHRISTMAS OFFERING.

All our societies have received ere now, programs and envelopes for this special offering which we make at Christmas time, to extend our work in China. With fourteen choice men and women waiting to go to Foreign Lands, well prepared and eager to be sent, and no money for sending them, let us give earnest heed to the messages from our secretaries. Whatever is given helps to make up the apportionment of each society, so that it is not an extra contribution, yet some extra effort is needed to make it a success. Try to get envelopes taken by many who do not give regularly, asking them before they have laid plans for all their Christmas spending. If the pastor will preach a special sermon, that will keep. Dr. Love, Corresponding Secretary of the Foreign Board, says: "Unusual effort must be made to get ready before the Christmas Offering is called for. Will not all lay by out of luxuries, pleasures and Christmas money a worthy offering?"

"Give as you would to the Saviour if you met his loving look,  
Give as you would if his dear hand the proffered offering took.'

I hope that each one of you may be led to such liberality to this appeal which the Saviour makes through his cause that the pleasure you receive from your gift may not be the least of your Christmas joys."

The ingathering of the Christmas Offering comes as a part of the week of prayer, January 2-8, and Miss Mallory says: "Laying emphasis upon the twofold privilege of praying and giving, the January Week of Prayer should appeal to each of our workers. Some may not be able to give as abundantly as formerly, perhaps, but they can pray believing; some may not have learned the secret of united prayer, but they can give something. Thus may each have a part.

With this literature goes out also the Topic Card for the year 1916. The Union is desirous that each member be supplied with this card, provided they will use it in their prayer and study life. On it will be found also the hymn for the year."

Send to our office for more envelopes, or for the programs, etc., if you have received none. E. S. B.

### REPORT OF ANNUAL MEETING AT JELLICO.

Full reports have appeared in our Baptist weeklies, and our Minutes will be published along with the Minutes of the General Association, to which we are Auxiliary. Only a brief account need be given here, therefore. Meeting in this far Southeastern part of our territory, we enjoyed the opportunity of knowing some of our splendid women who belong to our mountain region, while there were good delegations from Central Kentucky also, and the Western District alone was unrepresented. The comparatively small numbers present enabled us to get closer together, and the free conference on Tuesday morning was most helpful to the officers, and informing to all who were present. The memorial service for Miss Fannie E. S. Heck in the afternoon was planned so as to bring her before us as an example, in her home life, her State work, her services to the Union. Mrs. McLure spoke tenderly of her relation to the Training School, and Miss Le Compte of her traits as a presiding officer. Some of Miss Heck's favorite hymns were sung, "Sun of my soul," "My faith looks up to Thee" and "All hail the power of Jesus' name." When the Woman's Hymn, written by Miss Heck, was sung next day, the copies distributed were carried away as precious souvenirs of one who had done so much to "proclaim Life from a Saviour slain," and whose influence will ever abide among Baptist women of the South.

The President, Mrs. E. T. Forsee, conducted the business sessions with ease and dispatch, and the published program was duly followed. As Mrs. McLure was closing her beautiful and inspiring talk on the Training School, by reading a message from the five Kentucky students, she spied a former graduate entering and called her to the plat-

form. Miss Mallie Baker came to the school from the mountains, proving herself an exceptionally good student, and is doing valiant service as a teacher in our mountain schools. Wherever she may be, societies spring up, whether among the women, the young women or children, as may be needed; and the thought occurred on meeting her again, that whatever money we give for the support of the Training School comes back manyfold in the contributions made by those whom these graduates lead into fallen knowledge of the claims of missions.

Mrs G. W. Perryman's report on Personal Service was elucidated by large charts, which were copied after small ones in our year book, but seemed much more convincing in this form. Next day they were displayed at the General Association, by request of the pastor of the Baptist church. Mrs. Perryman was reappointed Chairman of Personal Service, with a member from each district, hers being the North Eastern; from South Eastern, Mrs. J. E. Woodall, of London; from Central, Mrs. O. M. Huey, Crescent Hill, Louisville; from West Central, Mrs. Earnest Cook, Cecelia, from Western, Mrs. Phil Miller, of Owensboro.

Russel's Creek Association received the banner for largest number of new societies, 27 having been organized therein; 223 in the whole state. Miss Mary Lyne, of Russellville, was elected Sunbeam Leader, since Miss Warren was unable to continue the work. While she is a student at the Training School, Miss Lyne's mail will be sent to our office, 205 E. Chestnut, and the Sunbeam literature sent out from there. Miss Lyne has been highly successful with Sunbeams, and is well recommended by Miss Warren and Mrs. McLure. The College Correspondence will be conducted by Mrs. Hinkle, Mrs. Sibley resigning. The other officers were re-elected, except two Vice-Presidents, the new Vice-President from West Central District being Mrs. Judge Jones of Glasgow, and from Western, Mrs. Richard, of Hopkinsville. Miss Broadus and Mrs. Morgan of Harrodsburg, were asked to publish in Kentucky Mission Monthly a set of questions and answers on our W. M. U. work, which may be expected to begin in January. We are to meet next year in Louisville. E. S. B.

#### Receipts for November, 1915.

Grand Totals—Foreign Missions, \$367.46; Home Missions, \$243.79; S. S. B. Bible Fund, \$1.81; State Missions, \$343.97; Colored Worker, \$5.37; Training School Expense Fund, \$15.92; Training School Scholarship Fund, \$9.64; Training School Enlargement Fund, \$59.96; Judson Centennial Fund, \$46.50; Eliza Broadus Fund (Church Building & Loan Fund of the Home Board), \$193.95; Kentucky Baptist Education Society, \$8.29; Miscellaneous, \$19.98. Total, \$1,216.64.

Total for November, 1914, \$663.45.

Total for November, 1915, \$1,216.64.

Mrs. Kate C. Hinkle.

#### Associational Standards of Excellence.

The Associational Standard of Excellence Cards are being sent to the superintendents of each association with a letter asking them to send one to each society in their association. There were two points changed in this new standard at our annual meeting at Jellico, and we urge every society in your association to help in every way possible to reach this standard. So far, we have not received notice of a single association this year reaching all points on the standard. Last year Bethel Association was on the honor roll. H.

#### Breckinridge Campaign.


Miss Mattie Wilson, our Field Worker, has been working in a Church Campaign in Breckinridge Association each day since November 21st. We are receiving good news of her work in that association. New societies are being organized almost every day and old ones strengthened and instructed. We feel very grateful to our State Board and Miss Wilson for this. Following this campaign, she will visit the new societies organized during the Nelson Associational Campaign. H.

#### Catechism.

Miss E. S. Broadus was requested by the W. M. U. of Kentucky at our Jellico meeting to write a Catechism answering all questions on W. M. U. work in the simplest way. This will be published in the Kentucky Mission Monthly beginning with the January number and running two or three months. Every one should have a copy of this. H.

#### "The Pass-It-On" Department of Personal Service.

I find a great dearth of religious literature



**THE**  
**HENDERSON**  
**...ROUTE...**

**BETWEEN**  
**LOUISVILLE**  
**AND**  
**ST. LOUIS**

**DAILY 8:35 a. m. - 9:43 p. m.**  
**FOR EVANSVILLE**  
**8:35 a. m. 4:25 p. m. 9:43 p. m.**

Observation Parlor Cars and  
Pullman Sleeping Cars Thru

For Rates or Further Information,  
Address

<b>H. L. SWEENEY,</b>	<b>R. F. PENN,</b>
City Pass. Agt.	Trav. Pass. Agt.
<b>S. W. Cor. 4th &amp; Main</b>	
<b>LOUISVILLE,</b>	<b>KENTUCKY</b>

zines. This plan is to give each woman, who is a member of our societies, and who is willing to pass her literature on to another, the name of one of these women, asking that she read her Baptist papers and Mission Journals as soon as possible after receiving them, then mail them to the address given. In this way we hope to double the good being done by our religious literature and give each woman another opportunity of doing personal service work.

Any woman who would like to have the name of one to whom she may send her religious papers and magazines, may secure the same by writing me at headquarters.

Kate C. Hinkle.

#### Paducah's New Sunbeam Band.

News has just reached us of a Sunbeam Band organized in the Paducah First church with a membership of sixty-eight Sunbeams. Miss Carolyn Miller, the pastor's assistant, is the leader. Miss Miller is a graduate of the Texas Training School at Fort Worth and is a very efficient W. M. U. worker. Our best wishes go with this new organization.

K. C. H.

#### The New Sunbeam Leader.

We are very anxious that all Sunbeam Leaders may soon become acquainted with our new State leader, Miss Mary Lyne. Miss Lyne is now in the Training School at Louisville, further preparing for the work. Miss Lyne has proven herself one of the most efficient Sunbeam Leaders of the State, that is why she was so highly recommended to fill this State office. She is where she can do much of her work from our office headquarters. We bespeak for her your hearty support in the work.

Kate C. Hinkle.

#### A Separate State Meeting.

For two or three years a W. M. U. meeting separate from the General Association has been much discussed among our women. There are many arguments in favor of such, while there are some reasons which might make it seem more desirable as we now have it. Minutes of the annual meetings of other States are being received at headquarters and the large enrollment of delegates in the States where the Woman's Meeting is held apart from the General Association seem to indicate that the separate meeting is much more successful in many ways. Some of the delegates this year in-

in Baptist homes all over the State, particularly in the mountains sections. This has led me to write to different brethren in many sections of our State, asking for lists of names of women in whose homes there are few, if any religious papers or maga-

icated that they intend to serve notice that there will be a change in Article VI. of our Constitution next year, which states that the annual meeting shall be held in connection with the General Association.

We are calling attention to this point through the papers that our women all over the State may discuss this matter freely at their quarterly, semi-annual and associational meetings, as well as in the local society, that we may know the real sentiment of the majority of our women at that time. We do not wish to make any radical changes without weighing the matter prayerfully.

We should like to hear from others in these columns expressing their sentiment with reference to this matter.

Kate C. Hinkle.

#### Expression of Sympathy.

Our deepest sympathy goes out to Mrs. J. W. Connelly, of Glencoe, Assistant Superintendent of Ten Mile Association, in the sudden loss of her youngest son. Mrs. Connelly is one of our best workers, and her sorrow touches us all.

K. C. H.

Dear Dr. Powell:

I have wanted to express my uttermost appreciation of the article in the papers of recent date, in which you wrote of the need for more societies in the Kentucky W. M. U. I feel as you do in regard to our weak point in this, and I am urging an aggressive campaign in the associations, looking to the enlargement of our forces. There is one serious obstacle in the way of our progress and it is in regard to this I am appealing to you. In so many of our Baptist churches the pastors do not encourage the work of our woman's missionary societies; in fact, many times they place a ban upon it, and do all they can to discourage the organized work. I believe this is because they do not understand the work of the Baptist women. You occupy a large place in the confidence of our denomination, and your opportunities, as you go about the State, to speak a word for our work would, I am sure, influence our brethren. We long for the approval and encouragement of our brethren, oh so much more than you can realize. My heart has been saddened many times in our association to meet with the antagonism of some of our ministers. On one occasion, one of these objected to our meeting at the asso-

ciation and had the door of the church locked against us to prevent the meeting. I would love for you to explain our position whenever you have occasion. I long to see our churches helping to fulfill the command to give the Gospel to the world, whether it be through the W. M. U. or otherwise.

May the Lord lead you into ways of wisdom and bless your labors abundantly.

Yours in service,

Mrs. E. T. Forsee, Pres. Ky. W. M. U.

#### FROM BRAZIL.

Brother W. D. Powell:

Dear Brother: I notice in the July number of the Mission Monthly that Kentucky is forging ahead in Missions, as usual, and better, increasing. I shall never forget the splendid time I spent last year in the Bethel and Campbell County Associations. And I especially send regards to all I met, and who treated me so kindly. Permitting me to tell of our needs on the Amazon Field.

Politically, Brazil is in a bad fix and as it appears on the verge of a revolution, because of the European war, the country is suffering. Also the Northeast of Brazil is suffering for lack of rain and hundreds are starving. While the government of Para and Amazonas is paying the passage for those who want to come North, and thus thousands are saved from starvation, and the Amazon country is receiving the population needed.

This therefore is our time. The people are humble, and will listen to the Gospel. We have the privilege of preaching in parks, on the streets and in the homes of the people. Several young men are beginning to help, so we look to the future with hope. But we must have a new missionary couple here in Para in order to open a school and make use of these young preachers; also look after the public school children.

Besides, I must look after the work in the Interior of the Amazon, or that work will suffer. I appeal therefore to the people of Kentucky, and the young men who wish to work for the Lord, look over the map of Brazil, and see one lone missionary in a territory as large as the Southern Baptist territory. Pray for us.

E. A. Nelson.

During the recent meeting of the Texas Convention there were many and severe criticisms against union meetings. Too often doctrine is discountenanced. Sometimes there is no clear presentation of Christ as the only Saviour.

A great battle was fought in Bell County against the "bottle" and a mighty victory was won. Our Baptist ministers rendered royal service and today every saloon in the county has been closed.

Every missionary must be fearless. He must love the truth and declare the whole counsel of God.

#### RECEIPTS FOR NOVEMBER, 1915.

Bell Co. Ass'n—New Liberty ch., W. T. R., \$1.50.

Bethel Ass'n—Armageddon S. S., G. L. C., \$5.

Breckenridge Ass'n—Walnut Grove ch., \$2.89; Goshen ch., \$23.18; Garfield ch., \$1.50; English ch., \$5; Bewleyville ch., J. E. M., \$3.

Campbell County Ass'n—1st ch., Newport, \$17.45; 1st ch., Newport S. S., R. E. K., \$51.87; Newport S. S., Mrs. S. R., \$1.

Cumberland River Ass'n—F. M. F., \$10.

Davies Co. Ass'n—Pleasant Grove ch., \$6; Sorgho ch., O. J. C., \$6.

East Lynn—Pleasant Hill S. S., W. T. C., \$31.

Enterprise Ass'n—Inez ch., J. R. B., \$3; Clifton and Flat Gap ch., L. F. C., \$1.75; D. A. D., \$5.58.

Goshen Ass'n—Hopewell ch., O. J. C., \$14.

Graves County Ass'n—Mayfield ch., W. M. W., \$91.28.

Greenup—Carr S. S., Mrs. J. D., \$1.20; Wolf Creek S. S., Mrs. M. C., \$1.20.

Logan County Ass'n—Elklick ch., \$15.94; Lewisburg ch., \$1; Mud River ch., 50c; Mt. Pleasant ch., D. P. B., \$1.

Long Run Ass'n—22nd and Walnut st., C. H., \$94.81; Crestwood, H. B. P., \$50; Eight Mile ch., O. W. Y., \$2.05; Parkland ch., C. M. H., \$80; Broadway S. S., H. C. H., \$44.81; West Broadway, Miss M. L. B., \$15; Fisher-ville ch., F. D. M., \$4.50; 3rd ave. ch., S. A. C., \$27.42; Walnut st. ch., L. M. R., \$1,500; Little Flock ch., W. O. B., \$6.12; Baptist Taber-

nacle, W. E. F., \$59.10; Carlisle ave. ch., H. C. G., \$6.75; Broadway ch., T. J. H., \$40; Little Flock, Mrs. J. R. H., \$20; 22nd and Walnut st. ch., C. H., \$71.68.

Nelson Ass'n—New Salem S. S., T. P. S., \$14.35.

Ohio River Ass'n—Marion 2nd ch., R. A. B., \$22.56.

Oneida Ass'n—Mrs. L. D. S., \$8.95.

Rockcastle Ass'n—Oak Hill ch., F. M. J., \$13.95.

Salem Ass'n—Raymond ch., L. B., 52c.

Severn's Valley—Gilead ch., Mrs. J. W. V., \$50; Gilead ch., J. W. V., \$50.

Shelby County Ass'n—Burk's Branch S. S., E. H., \$6.97.

South District Ass'n—Harrodsburg S. S. and B. Y. P. U., E. I. B., \$80; Lancaster S. S., Miss A. R., \$1.53.

Sulphur Fork Ass'n—Harrod's Creek S. S., Miss K. J., \$5.

Tate's Creek Ass'n—Berea ch., \$5.47; Berea S. S., E. B. E., \$2.50.

Three Forks Ass'n—R. F. D., \$4.28.

Wayne County Ass'n—G. C. S., \$6.

Warren Ass'n—Bondville ch., E. R. R., \$3.50.

Warren Ass'n—Friendship S. S., W. R. W., \$4.52; Bowling Green, 1st ch. S. S., W. B. G., \$16.59.

West Union Ass'n—Bondville ch., E. R. R., \$3.50; Paducah, 12th st. ch., K. L. C., \$36.70; Paducah 1st ch., W. W. R., \$50.

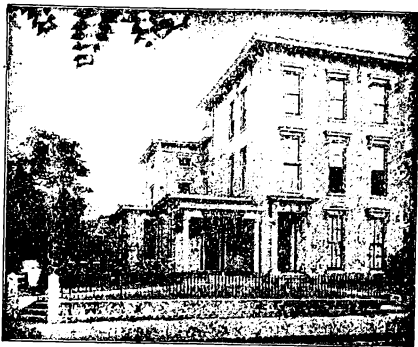
Journals—Mrs. G. S. C., 25c; Mrs. C. H., 60c; Miss A. M., \$7.85; F. P. S., \$4.20; E. R. R., 85c; J. E. M., 60c; Mrs. G. H., 85c; Mrs. J. G., 60c; A. L. C., 50c; Mrs. J. T. C., 25c; J. C. G., 60c; Mrs. E. W. S., 60c; Mrs. B. T. W., \$2.40; Miss B. D., 60c; W. D. P., \$1.80; Mrs. B. K., \$1.20; J. A. C., 25c; W. G. E., 60c; O. M. H., 60c; Mrs. O. H., 60c; Mrs. C. L. G., 60c; R. A. B., \$1.20; F. P., 60c; Mrs. B. W. H., 50c; Mrs. W. H., 85c; Mrs. L. B. W., 25c; E. L. E., 60c; Mrs. T. C. C., \$2.40; Miss E. L. E., 25c; D. A. D., 60c; Mrs. J. R. S., 60c; W. A. M. W., \$2.10; O. J. C., \$5.65; Mrs. G. M. S., 60c.

Book Sales—Rev. D., 15c; J. S. W., 4.16; I. P. Co., 46c; B. B. S. S., \$1; F. J., \$3.75; F. M. J., \$4.15; Mrs. G. C. B., \$1.20; J. S. W., \$1.35; W. T. R., \$5; M. S. B., \$3.35.

Miscellaneous—J. G. B., C. M. F., \$40.20; Mrs. C. S. C., \$4.85; Mrs. R. A. D., \$18.10; Gen. Ass'n, \$86.65; J. W. W., \$10.

W. M. U., \$1,216.64.

A CHAPEL FOR PATRONS



**LEE E. CRALLE**

**Funeral Director**

S. W. Cor. 6th and Chestnut Sts.  
Telephone Main 430

LOUISVILLE, - KENTUCKY

**We Print College**

**Catalogues, Booklets,**

**Phamphlets, Tracts,**

**Wedding Invitations,**

**Cards,**

**Announcements Etc.**

**MOLL & CO.**

Incorporated

120 S. First St. Louisville, Ky.

Home Phone 351 Correspondence Solicited

**BLUM ART GLASS CO.**

INCORPORATED

**Maker of Church Windows**

640 Third St. Louisville, Ky.

**“ANITA”**

AMERICAN LIGHTEST WATER

Always Pure, Fresh & Invigorating



THE BEST COOLER ON THE MARKET

**Anita Spring Water Co.**

INCORPORATED

PHONES { Home 4520  
Cumb. M. 1468-A

Our New Plant, 210-212 Pearl St.  
LOUISVILLE, KY.

-----WE ARE-----

MANUFACTURERS OF

**MONUMENTS**

Of High Class, But Moderate Prices

**Peter-Burghard Stone Co.**

SALESROOM

317 W. Jefferson St.

PLANT

13-14 Maple St. Louisville, Ky.

# Important New Books

## WE WOULD SEE JESUS      Geo. W. Truett, D.D., Price \$1.00

Anyone who has heard this matchless preacher will want to read this book of his choice sermons, together with a life sketch by Dr. Cranfill. Dr. Truett has a way of saying things which grips the heart.

## ACRES OF DIAMONDS      Russell H. Conwell, Price \$1.00

A lecture which has inspired thousands of people now appears in book form, together with a brief-sketch of Dr. Conwell's life. This lecture has been delivered over 5,000 times, and has earned \$400,000. A wonderful source of inspiration.

## A MAN AND HIS MONEY      H. L. Winburn, D.D., Price 50c

A book for layman. It would be strange if a business man should launch an enterprise costing millions of dollars a year without provision to finance it. It would be stranger still if God had launched His Kingdom enterprises with their immense cost and made no financial plan. This book discusses the subject.

## EVERY DAY GLADNESS      Fannie E. S. Heck, Price 50c

Happiness is a universal quest. All mankind is seeking it, and the message of this book is that to find it, life must be marked by harmony, beauty and power. These splendid qualities find true expression only when Christ is made the great Pattern for life and conduct.

### 1916      SUNDAY SCHOOL LESSON HELPS      1916

Peloubet's Select Notes .....	Postpaid	\$1.10
Tarbell's Teacher's Guide.....	"	1.10
Practical Commentary .....	"	.60
Torrey's Gist of the Lesson .....	"	.25
Haldeman's Lesson Quarterly.....	"	.25

Write for rates in quantities.

**Baptist Book Concern**      650 FOURTH AVENUE  
INCORPORATED      LOUISVILLE, KY.