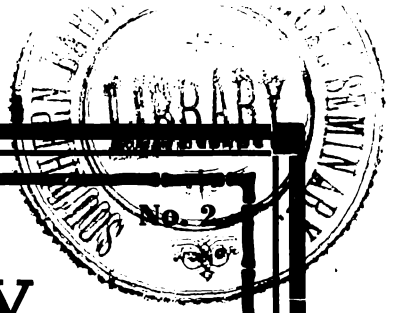


2P
11940713



Vol. XVI.

Kentucky

Missi Baptist Seminary Library 500 W. Broadway Monthly

OFFICIAL ORGAN OF KENTUCKY BAPTISTS

Entered Feb. 5, 1903, at Louisville, Ky., as Second-class matter, under act of Congress, March 6, 1879.

JUNE, 1916

25 Cents a Year

W. D. POWELL,	- - - - -	EDITOR
MISS E. S. BROADUS,	-	EDITOR WOMAN'S DEPT.
A. E. WOHLBOLD,	- - -	BUSINESS MANAGER

**GENERAL ASSOCIATION OF BAPTISTS IN KENTUCKY,
Officers**

A. Gatliff, Moderator	F. D. Perkins, Asst. Moderator	W. M. Wood, Asst. Moderator,
John L. Hill, Sec'y	A. E. Wohlbold, Asst. Sec'y.	

Executive Board

W. M. Stallings, Chr. Georgetown, Ky.	E. C. Farmer, Rec. Sec. Louisville, Ky.
A. L. Crawley, Asst. Sec. Louisville, Ky.	

Earnest Effort

Must be made to put on the Budget Plan in every Baptist Church in Kentucky. Let every Sunday School and Church send us a special contribution for the feeding, clothing and care of the 93 inmates of the Children's Home at Glendale. They have been placed under our care and money for their maintenance must be forthcoming.

THE FOREIGN, HOME and KENTUCKY MISSION MONTHLY, all for 60c PER YEAR.

Published Monthly at 205 East Chestnut St., Louisville, Kentucky



AWAY up in the mountains of Western North Carolina are the beautiful and attractive resorts of Asheville, Black Mountain, Hendersonville, Brevard, Lake Toxaway, Saluda, Waynesville, (Lake Junaluska), Flat Rock, Hot Springs, and Tryon. Spend your vacation at one of these cool and delightful places or at Tate Spring, Tenn. Round trip Excursion tickets are on sale daily, good until October 31st, via

Special denominational Missionary and Bible Conferences at Black Mountain, Ridge Crest and Waynesville, N. C. (Lake Junaluska.)



SOUTHERN RAILWAY
Premier Carrier of the South



Stop-overs allowed at all points. Three special Low Fare Excursions will be run during the summer. Ask for details.

For full information see Ticket Agent, Southern Railway, or write B. H. Todd, District Passenger Agent, Louisville, Kentucky.

ONLY \$8.25

For the round trip to the Mountains of Western North Carolina "The Land of the Sky" country. Special excursion leaves Louisville Wednesdays, June 21, July 12 and August 2, 1916.

Tickets good fifteen (15) days.

B. H. TODD, District Passenger Agent, (Starks Building) Louisville, Ky.

The Kentucky Mission Monthly

"LET HIM THAT HEARETH SAY COME"

VOL. XVI.

JUNE, 1916

No. 2

... EDITORIAL ...

W. D. POWELLEditor

ALL TOGETHER.

The Baptist State Board of Missions heard Dr. J. F. Love in an earnest plea for \$15,000 from Kentucky on the debt of the Foreign Mission Board and unanimously resolved to undertake to raise it in addition to the \$3,800 which our Baptist women are trying to secure. This is on condition that the entire debt is to be provided for in sixty days. Now let every Baptist do his level best to raise large amounts and send them to this office, stating that they are for the debt on the Foreign Mission Board. We must all help. Working together, praying together and giving together increases our solidarity. Confidence, immediacy, persistence and loyalty must mark our conduct at this time.

It is unfortunate if any interest has come into the Budget System, which does not have full confidence in the fairness and justness of the thirty-four men who compose our State Board of Missions. Mutual faith and respect are indispensable to that great measure of success which our Unification Plan was intended to promote.

Every one must put his shoulder to the wheel and help bring to this office the \$15,000 which are so urgently needed to assist in liquidating the indebtedness of the Foreign Board. This has been like a millstone about the neck of our Foreign Board. They hear piteous calls, they look longingly upon most inviting fields. They are fully acquainted with the distress of overworked missionaries who for a period of years have needed re-enforcements to take the place of those who have died, or resigned, or been invalided home. The climate in many foreign countries is most unfriendly, yet the work is imperative and gives large returns. We must loose the hands of the Foreign Board that they may send forth the

strong men and women who have said 'Here am I, send me' and are ready to go at a moment's warning. They must occupy, in the Master's name, fields so ripe for the sickle. They must respond to the plaintive wail from the missionary, tired in body, despondent in mind and sick at heart with watchful waiting for some one who will come and share the burden and labors with him. The sacrificial fires which were kindled in Asheville must burn brightly in the hearts of God's people throughout Kentucky. It should be a joy to us to respond to the call of our Master and of our brethren. Pastors should preach on the subject, have earnest prayers for the guidance of the Holy Spirit and see that large love-gifts are sent to us without delay. There should be no division of sentiment, no parleying and no delay. The King's business requires haste.

OUR SYSTEM OF FINANCES.

For a year or two the Budget System was advocated, especially by friends of the Education Society, and it was urged that all of our interests should be combined under one general board. At the last meeting of the General Association the Budget System was adopted and it was decided that it should be put on, beginning January 1st. It was claimed that it would be in the interest of efficiency and economy by the removal of overhead expenses. The writer was one of the last converts, for he foresaw many complications and difficulties in the way. The System has been inaugurated for six months and our churches, with very creditable unanimity, have adopted it. In many instances it has greatly enlarged the giving.

From the office we have tried to plead for the various objects which are fostered by our present System. It is no small task to secure the adoption of a new system of financial support and we shall be most fortunate if it has been well inaugurated by the close of the year. Those

interests, where the Secretaries still remain employed, we have looked largely to them to spread forth the claims of their respective work among our people. For instance, the Secretary of the Education Society is still employed and it is supposed, continues to press the internal working of his Society upon the hearts and consciences of our people. We have, in a general way, to pastors, churches and the denomination at large, stressed Christian Education and our denominational schools, and tried to show the duty of our people to support them; but we will not feel free to go forward as long as there is a man to do that and it might lead to a regrettable situation.

THE DEDICATION AT MUNFORDSVILLE.

After years of struggle, the church at Mumfordsville, under the leadership of Pastor C. P. Bass, have erected a most beautiful and commodious house of worship which has cost some \$8,000. It has caused heroic giving. The writer preached the dedicatorial sermon on last Sunday and the funds needed to complete the payment were secured, \$4,465. It was a great day.

Rev. C. C. Daves of Pikeville has just closed the second year of his pastorate. The receipts have been \$1,800. All debts have been paid and they start the third year full of hope and animation. It has not been deemed wise or feasible to put on the Budget System up to the present, but they hope to do so after the Association meets. Brother Daves is doing a most successful work.

Rev. W. A. Gaugh is now settled as pastor at Louisa. The work promises great results in the near future. Brother Gaugh is one of our strong ministers and will no doubt accomplish much good throughout the Big Sandy Valley. For the present, he will preach at Inez, Martin County, once each month.

Rev. J. W. Crow, one of our most energetic workers, is doing splendid work at Jenkins and Burdine. His churches have put on the Budget System and remit to us regularly. They have splendid plans and

are undertaking to raise each month certain amounts for their indebtedness. Bro. Crow is greatly beloved by his people and by the community generally.

We were at Fleming last week arranging for the House of Worship there without further delay. By chance we met Brother Lewis Lyttle and his wife who were on a visit to relatives. Brother Lyttle loves hard work and has that splendid quality of "Keeping everlastingly at it." He expected to preach several times in that vicinity before returning to his field of labor.

Pastor A. C. Hutson has succeeded in putting a beautiful fence around the new church at Whitesburg. The house is a gem.

We failed to meet Brother Petrey as we passed through Hazard, but we had splendid accounts of his work. Three new houses of worship will be erected in the vicinity of Hazard this summer. We must take our Commonwealth for Christ and the Truth.

We met Rev. J. H. Broom at Jackson, where we spent the night. The new house is going up and will soon be completed. The Sunday School grows and people and pastor are greatly encouraged.

A LESSON WE SHOULD LEARN.

A few years ago, no State in the South was making more rapid strides in the development of a mission conscience made manifest in enlarging gifts than the State of Georgia. They became one of the most liberal contributors to Foreign Missions in the whole South. Divisions came on the subject of education and other local matters. They lost confidence in their leaders. Large debts accumulated and their condition became anything but enviable. It was truly lamentable to note their decline. They are struggling under the wise leadership of Dr. Arch C. Cree, but it will be many years before they will be entirely free from the overwhelming indebtedness that rests upon them. They have our sympathy. We do not wish such conditions to ever come to Kentucky and yet it is possible. We must be guarded in our undertakings. You may rest assured there will be a collapse

when men who never have succeeded in business matters undertake to force themselves as leaders in the Lord's work.

It has been wisely said that we will never bring our people to a proper appreciation of stewardship until our people are taught that the giving of money is a distinct part of the worship of God. There is no reason why a minister should apologize for preaching on money. Neither should a collection be ever spoken of as a necessary evil. Some of the most deeply spiritual and worshipful meetings we have ever attended was a Saturday business meeting of a country church. The people were worshipping God and transacting business for Him. The offering of our money and of our substances as love-gifts to God ought to constitute a soul-stirring part of the services. A collection should never be taken in a cold-half-hearted manner, nor degenerate into a mere formal act. Our gifts should be carried with us to the House of God just as we carry our Bibles and our hymn books and we should always preserve an atmosphere of sincere worship, no matter how hilarious the giving may be. The closer the people are drawn to Christ and the more sensible they are of His Power and presence at the time when offerings are to be made, the warmer the hearts will grow and the deeper will the spiritual tide flow from Sunday to Sunday

THE BIBLE INSTITUTE AND SCHOOL OF METHODS.

The Bible Institute and School of Methods will hold its annual meeting at the State University the last week in July. There is an able faculty of both white and colored who will speak morning, afternoon and night. It will be most profitable for our colored brethren. Teachers, preachers and workers from all over the State will be here. Dr. Winburn each morning will deliver a lecture on the different phases of Church Finances. Dr. J. W. Porter will follow each morning with lectures on Baptist Doctrine and Baptist History. Other speakers will each day close the morning hour with inspirational addresses. In the afternoon various classes in different phases of Sunday School and B. Y. P. U. work will be taught. A free lunch will be

served at six o'clock. This will be followed by lectures by Dr. Vass, a noted colored minister, and other strong men.

Each colored minister who attends and who receives a salary not exceeding \$600 a year will be given a good supply of helpful books.

Reader, please inform the colored people in your community of this important assembly.

BIBLE INSTITUTE AT BLOOMFIELD.

It was our privilege to speak at this important meeting that was held by Pastor E. H. Blakeman. The attendance was large and the interest fine. It goes without saying that we were handsomely entertained. Pastor Blakeman has a splendid hold on his people and they are going forward in all lines of denominational work.

THE ORDINATION OF J. W. BLACK.

It was our privilege to preach the ordination sermon of this splendid brother on Wednesday night of last week at Morehead. Brother Black is a lawyer who has been devoting much time to religious work for a period of years. For some time he has felt a distinct call to devote his life to the preaching of the Gospel. He is sound in the faith; is well acquainted with God's Word; is a vigorous thinker and has splendid delivery. We shall expect to hear the very finest results from his labor and predict for him a career of usefulness. He has accepted the call to the churches at Howard's Mill and The Levee, near Mount Sterling.

Rev. W. C. Pierce of Pollard has been quite ill, but we are rejoiced to state he is now much improved. He is one of our most useful pastors whose influence extends far beyond the limits of his congregation.

We expect every pastor and every employe of the State Board to assist in gathering funds on the debt of the Foreign Board. May we count on you?

A Baptist meeting house is greatly needed at East Bernstadt. We have a Baptist Sunday School and Church organization. The people are poor and they must have some outside aid. Who will help us?

CAN IT BE DONE?

Some are good at starting, but poor finishers. Jesus puts before us sometimes difficult things to try us. We can raise the \$15,000, and we must do it.

Each District Association as well as each church should take up the matter of raising money for the Foreign Mission Debt. Let us demonstrate to ourselves and to Southern Baptists what we can do in sixty days. Let your quick and liberal giving prompt some one else to follow your example.

One man gives \$1,000; another \$500, and a number smaller amounts. Send on the money. Rally to the aid of our foreign work!

In putting on the Budget system, we must not forget that Baptists possess no external authority. We can coax, but we cannot coerce. Our efficiency is obtained without destroying individual initiative and personal freedom.

By talking, working and praying, we come to see eye to eye. This unity and cohesiveness vitalizes our agencies for promoting the Lord's work. When the children of God are not kept busy at the Lord's work, they will be found fighting among themselves or dancing around some Golden Calf.

Rev. A. S. Petrey expects to build this fall three Baptist Meeting Houses at needy points near Hazard.

The Emily Northup Church, near Louisa, is completed and will be dedicated at an early date. The church was organized by one of our Missionaries, and was aided in the erection of a House of Worship by our Church Building Fund.

Kentucky Baptists must quicken their pace in giving to Missions. We hope that this will be the last month of the current Convention year that we will be compelled to borrow.

Southern Baptists have given \$17,441 more to the Foreign Board this year than last. Of this amount, Kentucky has paid \$13,572, and all the other States \$3,869. Everybody keep busy!

"GILT-EDGE SECURITIES."

Reader, have you invested any of your funds in what others told you were "Gilt-edged securities"? Doubtless your advisers were conscientious, but you may find that they erred in judgment. The trouble is, you may discover that the gilt is all on the edge.

The Baptist State Board of Missions can furnish you bonds where the gold reaches from the edge to the center.

Possibly you desire a larger rate of interest than you are now securing on a high-grade investment, and wish to have the principal finally used in Christian work. We can pay you annuity, monthly, quarterly or semi-annually, and then the principal at your death can go to the general work of our State Board, or you can specify it for State Missions, Home Missions, Foreign Missions, or Combined Missions, which would be all three. You can designate it for the interest to go to the support of the Children's Home or Education or the Students' Fund. Not one cent of the principal will ever be used, only the interest will be consumed. If you are interested, or if you desire a larger rate of interest than you are now receiving, write to W. D. Powell, Corresponding Secretary.

In making a will, it is very important that you use our incorporated name, namely, "The General Association of Baptists in Kentucky." It is always best to have an attorney to draw up a will, and not some well-meaning person who will do it for nothing. Often hundreds of dollars are saved by paying an attorney ten dollars for his services.

You can't fret away your sorrows,
You can't mope away your cares;
You can reach the glad tomorrow,
If the dark todays you bear.
But your growling and your whining
Will not hasten joys to come.

—Edgar A. Guest.

CHURCH TO CHURCH CAMPAIGNS.

C. D. Graves.

The supreme task of the Southern Baptists at the present is the enlistment of our church members in the missionary enterprise of Jesus. The most potent agen-

cies for accomplishing this task are our returned missionaries and our enlisted pastors.

Only the enlisted can enlist.

When Judson and Rice resigned as the missionaries of the Congregationalist Foreign Mission Board and offered to become the first missionaries of American Baptists there was no one in the homeland qualified to elicit from the Baptists of America their support. It was necessary for Luther Rice to leave India and return to America at once to enlist American Baptists sufficiently to support these first two missionaries.

Since then our returned missionaries have engaged in enlistment work. Our Secretaries, aflame with missionary zeal, have poured out their souls upon American assemblies, until we have now in our Southland hundreds, if not thousands, of pastors who are filled with zeal and enthusiasm for world-wide missions. Side by side with them are a splendid company of laymen and a host of devoted women, who are ready to give themselves to the task of enlisting others in the furtherance of the great commission of Jesus. At this time, we have at home on furlough more than thirty male missionaries. The able bodied men among these, and our enlisted pastors and laymen and women constitute the greatest force within the grasp of our denomination for enlisting the other millions of our people.

The most immediate and economic method of utilizing these forces for the enlistment of church members of an entire Association is through a Church to Church Campaign. In such campaigns, the pastors, accompanied by a returned missionary, go from church to church throughout an entire Association, spending a whole day with each church. Face to face they lay upon the membership of each church the great commission of Jesus, including all missions and the preaching of the gospel from the local pulpit. The Bible plan of church finance, as laid down in 1 Cor. 16:2, is urged as the financial basis of the great commission. Wall charts are used to burn the facts of missions through the eye, while the speaker reaches the heart through the spoken message. Subscribers are secured for our mission journals, free literature is distributed bearing upon the subjects discussed during the day. Usually some wo-

man accompanies the campaign to organize the needed missionary societies in each church, and strengthen those already in existence. A whole day is spent with each church, with dinner on the ground. A stereopticon lecture is frequently given at night.

In such campaigns no church is visited except upon the invitation of the same. The pastor should always be in charge of the meeting in his own church, and nothing should be attempted without his sanction.

These campaigns systematize and economize the engagements of our returned missionaries. They enable our missionaries to testify of what they have seen God do in foreign lands in many churches where no missionary has previously appeared. Pastors are developed in the spirit of missions by participating in such campaigns. Splendid laymen become more valuable missionary assets by giving their time and energies to such work. Local women are developed into loyal leaders by the heroic work which they have done in such volunteer service.

In Kentucky these campaigns present a splendid opportunity for inaugurating throughout an Association Kentucky's Budget Plan.

More than thirty of these campaigns were conducted last year in Kentucky, Tennessee, Alabama, and Mississippi. In Alabama, Tennessee and Kentucky six campaigns have been completed since January 1, 1916, and seven others are either now in progress, or will be in the immediate future. Hundreds of Pastors have gone out as God's chosen leaders to enlist the membership in their own Association, hundreds more are ready to go and do it.

The men and women employed by our State and Home Boards for distinctively enlistment work are capable of rendering great service, but the enlistment of your Association depends largely upon YOU.

No outside man can possibly have the influence in any Association possessed by those pastors who, for a number of years, have married the living, buried the dead, and held revival meetings throughout the bounds of their Association. Such men are Christ's greatest asset for the enlistment of the Baptists within the bounds of that Association. Their opportunity is supreme; they are splendidly rising to meet it.

... SUNDAY SCHOOL DEPT ...

Walter L. Brock, 205 E. Chestnut Street
Louisville, Ky.
Sunday School Secretary

"TURN, BOYS, WE'RE GOING BACK!"

Kentucky is coming back to the place where she belongs. She has been in the lead, and she is still in the fight. The hosts are getting ready for great battles in various parts of the State. The battle lines are being formed. We are in the midst of a campaign that is but a beginning of glorious things. Let this campaign extend now into the Associations. Let there be inaugurated in each Association a movement to put on a teacher-training class in every church within her bounds. Our teachers must be trained. Our training course affords ample opportunity for the accomplishment of this end. No pastor can afford to neglect this duty and privilege. We deem it axiomatic that no man can teach what he does not know.

See how the forces are moving and join the procession. Now is the time to strike for a training class in your church.

Rev. W. R. Hill, Princeton, teach for Rev. E. W. Barnett, Fredonia; "The Doctrines of Our Faith"; date, June 5-9.

Rev. W. C. Reeves, Ashland, teach for Rev. W. C. Pierce, Ashland; date, May 29-June 2.

Mr. C. S. Leavell, Louisville, teach for Rev. C. W. Elsey, Cynthiana; date, June 12-16.

Rev. E. W. Coakley, Waynesburg, teach for Rev. T. C. Duke, Somerset; date not announced.

Rev. J. W. T. Givens, Greenville, teach for Rev. E. L. Howerton, Central City; date not announced.

Rev. C. D. Stevens, Harlan, teach for Rev. J. A. Lowry, Barbourville; date not announced.

Rev. E. L. Edens, Pembroke, teach for Rev. H. E. Gabby, Hopkinsville; date not announced.

Rev. N. F. Jones, Dayton, teach for Rev. H. B. Wilhoite, Maysville; date not announced.

Rev. S. W. Partee, Paintsville, teach for

Rev. C. C. Daves, Pikeville; "The New Convention Normal Manual"; date, June 12-16.

Rev. C. C. Daves, Pikeville, teach for Rev. S. W. Partee, Paintsville; date not announced.

Dr. J. W. Thompson, Woodlake, teach for Rev. W. L. Shearer, Stamping Ground; "Heart of the Old Testament"; date, June 5-9.

Rev. C. S. Ellis, Paint Lick, teach for Rev. H. M. Eastes, Morehead; "Winning to Christ"; date not announced.

J. W. Black, County Attorney of Rowan County, recently ordained by the Baptist Church at Morehead, and now pastor of Howard's Mill and Levee Churches in Montgomery County, is conducting a teacher-training class in each of his churches.

Pastor H. B. Taylor has recently conducted a class in "Winning to Christ" in his church at Murray, six taking the examination.

Rev. W. E. Hunter is spending this week at Monticello teaching "The New Convention Normal Manual" for Rev. J. E. Baird.

Dr. W. M. Wood, of Mayfield, has just closed a teacher-training class resulting in the ordering of fourteen diplomas.

Rev. Owen Williams has a class in progress in each of his churches—Dover and Aberdeen (Bracken Association), text book being "The New Convention Normal Manual."

A1 Schools in Kentucky.

Mentor Baptist Sunday School—Rev. A. R. Abernathy, Pastor; Mr. D. B. Jolly, Superintendent.

First Baptist Sunday School, Mayfield—Rev. W. M. Wood, Pastor; Mr. C. L. Albritton, Superintendent.

Calvert City Sunday School—Rev. I. E. Wallace, Pastor; Mr. J. M. Tichenor, Superintendent.

Greenville Sunday School—Rev. J. W. T. Givens, Pastor; Mr. T. O. Jones, Superintendent.

Kosmosdale Baptist Sunday School—Rev. Marcellus Watkins, Pastor; Mr. J. D. Robison, Superintendent.

Murray Baptist S. S., Murray—H. B. Tay-

for, Pastor; Barber McElrath, Superintendent.

Mt. Tabor S. S., Paint Lick—Rev. C. S. Ellis, Pastor; Mr. R. A. Ralston, Superintendent.

Tabernacle Baptist Sunday School, Louisville—Rev. J. J. Cloar, Pastor; Mrs. W. E. Florer, Superintendent.

Teacher Training Items.

Standing to date of five leading States, May 31, 1916:

Normal Diplomas—Texas, 6,047; Kentucky, 4,549; Georgia, 3,670; North Carolina, 3,637; Mississippi, 2,955.

Red Seals—Kentucky, 885; Texas, 850; Alabama, 489; Tennessee, 430; North Carolina, 426.

Blue Seals—Kentucky, 522; Texas, 464; Alabama, 257; Georgia, 230; Tennessee, 199.

Normal Diplomas issued in Kentucky during May, 1916:

Sulphur Fork—M. L. Orem, Mrs. M. L. Orem, Mrs. S. O. Boulware, Mrs. Noble G. Humston, Warrenna Martinie, Mrs. Erle Boyer, Mrs. Tom Jeffries, Mrs. St. Elmo Coblin.

Russell's Creek—Roy T. Hadley, Lydia A. Young, Willie M. Welborn, Ellen A. Sandens, Bede J. Skaggs, Ada C. Felts, Mary H. Erwards.

Three Forks—Mrs. Maude Campbell, Mrs. G. P. Campbell, W. G. Combs, L. F. Brash-ear, G. P. Campbell, Mrs. L. O. Wheeler, Mrs. L. F. Brashear, J. A. Grace, Alice Deaton, Lucinda Collette, Mahala Campbell, Polly J. Messer.

East Union—Rev. Geo. E. Baker, Rev. A. G. Findling, E. E. Disney, Maude Taylor, Grace Moore, Mae Murray.

Tate's Creek—Mrs. H. C. Pope, Mrs. Hal- lie Turner, Mary A. Prewitt, Mrs. James Curtis, Mrs. J. A. Prewitt.

Long Run—Eulah May, Helen Willett, Mrs. W. Y. Hunt, Mrs. C. W. Smith, Mrs. E. B. McLean, Josephine Morris, Alice E. Watkins, Ruth S. Zachary, Herbert Har- mon, R. P. Ringo.

Bethel—T. D. Evans, Rev. G. T. Hinton, T. L. Kirkpatrick, J. T. Lewis, T. A. Hinton, Rev. R. T. Litsey, Rev. J. L. Phillips, Mrs. J. C. Ray.

Barren River—Pearl Rush, Ruby Rush.

Graves County—Mrs. Geo. T. Fuller, Mrs.

T. L. Stovall, Mrs. Walter Wilson, Mrs. Ethel Roberts, Mrs. Clara Parkhill, J. W. Compton, Mrs. Esther Burnett, W. H. Wy- man, Louise Turner, Mrs. Clinton Burnett, Mrs. Joe Hamlet, Beulah Morgan.

Red Seals issued in Kentucky during May, 1916:

Pulaski County—Mrs. Etta Hatfield.

Graves County—Mrs. Esther Burnett.

Blood River—Ida Nance.

West Union—Mrs. Bertie Clark, F. M. Clark, Thelma Ryburn.

Long Run—Mrs. J. J. Cloar.

Bethel—J. T. Lewis, R. T. Litsey, T. D. Evans, G. T. Hinton, T. L. Kirkpatrick, Rev. J. L. Phillips, T. A. Linton.

Three Forks—Geo. N. Hale, Mrs. A. C. Hutson, Rachel Fields.

Blue Seals issued in Kentucky during May, 1916:

Elkhorn—Mary Johnson.

Long Run—Mrs. J. J. Cloar, Robbie Trent.

Gold Seals issued in Kentucky during May, 1916:

North Bend—Mrs. N. M. Northcutt.

The following is a list of Normal Diplo- mas by Associations ending May 31st, 1916:

Long Run, 710; Blood River, 455; Elk- horn, 337; North Bend, 266; West Union, 194; Pulaski County, 160; Bethel, 158; Da- viess County, 154; Campbell County, 140; Three Forks, 94; Graves County, 93; Bell County, 89; Nelson, 80; West Kentucky, 77; Wayne County, 71; Bracken, 70; South District, 70; Ohio River, 65; Union, 65; Muhlenberg, 63; Little River, 63; North Concord, 58; Ohio County, 56; Baptist, 54; Shelby County, 52; Tate's Creek, 51; East Union, 49; Ohio Valley, 48; Concord, 47; Enterprise, 46; White's Run, 45; Brecken- ridge, 44; Mt. Zion, 43; Greenup, 39; Frank- lin, 37; Liberty, 35; Crittenden, 35; Rus- sell's Creek, 35; Sulphur Fork, 34; Salem, 32; Severn's Valley, 31; Little Bethel, 24; Warren, 23; Boone's Creek, 19; Central, 19; Freedom, 17; Allen, 16; Goshen, 16; Onei- da, 13; Laurel River, 12; Simpson, 12; Sec- ond North Concord, 10; Lynn, 11; South Kentucky, 8; Ten Mile, 6; Rockcastle, 6; East Lynn, 5; Logan County, 3; Upper Cumberland, 2; Barren River, 2; Gasper River, 1; Owen County, 1; Blackford, 1. Colored, 4. Total, 4,585. Transfers and duplicates, 36. Balance, 4,549.

... WOMEN'S DEPARTMENT ...

Central Committee.

- Miss E. S. Broadus.....Chairman
1227 Third Avenue.
- Mrs. B. G. Rees.....Treasurer
2326 Longest Avenue.
- Mrs. Kate Coleman Hinkle.....Secretary
205 East Chestnut, Louisville, Ky .

Monthly Topics for 1917.

- January—Planning for 1917. A Study of the Individual Society, Outlining Methods for Its More Efficient Work; General Policy and Forward Plans of Woman's Missionary Union, S. B. C.
- February—Building for the Kingdom. W. M. U. Training School; Church Building Loan Fund.
- March—"And Samaria." Home Missions; emphasis upon March Week of Prayer and Thank Offering.
- April—"Unto the Uttermost Part." Foreign Missions.
- May—The Home Base. A Survey of the Forces Maintaining the Foreign Mission Enterprise.
- June—Missionary By-Products. Home and Foreign Mission Treatment; Emphasis upon Medical, Educational and Printing Activities on Foreign Fields.
- July—The Uplift of Two Races. Indians; Negroes.
- August—"In Jerusalem." City Missions both in South and on Our Foreign Fields; Emphasis upon Personal Service.
- September—"In All Judea." Mission Work as Conducted by State Mission Boards and W. M. U. Central Committee; Central and Specific State Mission Needs.
- October—"Look on the Fields." World Survey.
- November—Modern Missionary Movements. Laymen's Missionary Movement; Baptist Student Missionary Movement; Student Volunteer Movement; Foreign Missions Conference of North America; Federation of Woman's Boards of Foreign Missions of North America; Home Missions Council; etc.
- December—China's Call. Emphasis upon the Christmas Offering and the January Week of Prayer.

Hymn of the Year.

"Lord, Speak to Me That I May Speak" is beautiful and should be memorized and sung by all W. M. U. members.

Representatives.

Nelson W. M. U. will send two, Mrs. Duvall, Superintendent, and Miss Finnetta Sayers, Recording Secretary, to the Georgetown Assembly. Miss Bessie Wayne of Bardstown and another Y. W. A. of Cox's Creek were appointed as alternates.

Shelby County.

Shelby County W. M. U. will send Mrs. Chenault or her alternate to represent them at the Georgetown Assembly.

Georgetown Assembly—June 28-July 5.

Miss Kathleen Mallory with all her fresh enthusiasm for the new work of the year, will be the principal W. M. U. speaker.

Mrs. G. W. Perryman, State Personal Service Chairman, and Mrs. L. L. Roberts, Superintendent and District Vice-President, each experts in their line, will conduct helpful conferences.

Doctor George W. Truett, foremost Baptist preacher of America, will hold evangelistic services each evening. Every Christian needs the inspiration of these services.

The programs, chocked full of other good things, are out. Any one wishing one should send to N. T. Barnes, 205 E. Chestnut, or the W. M. U. office.

Mission Study.

Books recommended for the year:

"The Foreign Mission Report for 1916" and "Southern Baptist Home Missions" by V. I. Masters.

THE NEW PRESIDENT.

At our Asheville meeting, the Woman's Missionary Union elected for President, Mrs. W. C. James, of Richmond, Va., who is now serving a second term as President of the Virginia Union. Mrs. James is of Texan birth, and spent some years in Kentucky, so it was a happy coincidence that Miss Broadus and Mrs. F. S. Davis, of Texas, were asked to escort her to the platform. We have every reason to consider that a wise choice was made.

Another new officer is Miss Mary F. Dixon, Secretary for Young People. She is a daughter of Dr. A. C. Dixon, who has

held pastorates in Asheville, Baltimore and several other important points in this country, and is now pastor at Spurgeon's Tabernacle. Miss Dixon was educated in this country, and has had some experience at teaching, but now feels called to definite religious work. She will aid Miss Mallory in many ways.

The Watchword for the year is "Steadfastly in Prayer and Ministry," Acts 6:4, and the hymn "Lord, speak to me that I may speak," by Miss Havergal.

352 delegates and hundreds of visitors listened with deep interest to the report of the Training School Board, especially with reference to the new building so longed for. The Union voted to undertake the collecting of \$98,000—from 98,000 women to add to the \$52,000—in hand, and to proceed with the erection of the building at an early day. The plans shown were approved, and when finished the New House Beautiful will be an ornament to the city as well as a workshop for missionaries. Large gifts from those who are able, and dollar gifts from the many are to be sought in all our churches, from all our members. Plans will be published for carrying on the Dollar Clubs, and hearty enthusiasm is looked for on all sides.

The Margaret Fund Committee announced that nine children of missionaries, will this year receive scholarships amounting to \$150.00 each from this fund, many schools and colleges in many States generously giving tuition fee. This form of aiding the children of our missionaries eagerly welcomed by them, and every care will be taken that it be worthily bestowed. One of the recipients is a son of our Mrs. E. N. Walne, formerly of Ghent, Ky., but now of Japan, a most useful and highly esteemed missionary. We must continue to give \$100 a year to the fund.

Kentucky's Part.


Among those on the program was Mrs. L. L. Roberts, of Lexington, who spoke at the Conference on Young People's work, and Mrs. Janie Cree Bose, who gave the two minute talk on Kentucky in the State Reports, and was much complimented. Mrs. Hinkle had the important task of teaching the Mission Study Class of fifty or more on three successive mornings. The text book was the Report of the Foreign Board on three of our Mission Stations, not an easy

matter to handle, but of absorbing interest. This report is to be brought out in book form, with illustrations and sold for a Mission Study Book, a happy idea, as few people read the Minutes of the Convention, and hence few have realized what treasures of information are there to be found.

Summer Assemblies in many of our States are to be favored with the presence of returned missionaries, who will conduct the Mission Study Classes. At Georgetown Assembly, the teacher will be Dr. A. S. Taylor, a University of Virginia man, sent out to China as a medical missionary by the University Y. M. C. A., and now in this country because he won the Rockefeller scholarship for medical research. The West Kentucky Assembly at Russellville will have as teacher of Mission Study Prof. J. L. Hill, of Georgetown, well known as Secretary of our General Association.

Other points requiring special notice will be written up in the following months. Just now we are confronted by the absolute necessity of freeing the Foreign Board from the debt of \$180,000 accumulated during the past seven years, and blocking their path from forward movements, or even sustaining the forces we have.

Women of Kentucky are urgently appealed to, to make a mighty effort to aid in paying off this terrible debt. Letters have been sent to every society and Band, setting forth the need and the urgency of the case. Should this catch the eye of any woman in Kentucky whose society is not taking action, we beg you to speak to the officers, and stimulate them to make an earnest, honest effort to secure a gift from each member. Have special meetings, appoint committees, preceding all action with fervent prayer for God's help. Ask each woman to give half a dollar, and a second half in July, each Y. W. A. for half as many dollars as they have members, and each of the younger societies for one-fourth as many dollars as members. Bring in reports and dollars by June 21st, and if a second effort is needed, make July 22nd the last day. If all is raised, ring the church bells for joy, and have a praisemeeting. Send the money in the usual way, to Mrs. B. G. Rees, Treasurer, 205 East Chestnut, Louisville, Ky. Special effort or extra self-



**THE
HENDERSON
...ROUTE...
BETWEEN
LOUISVILLE
AND
ST. LOUIS
DAILY 8:35 a. m.-9:43 p. m.
FOR EVANSVILLE
8:35 a. m. 4:25 p. m. 9:43 p. m.**

Observation Parlor Cars and
Pullman Sleeping Cars Thru

**For Rates or Further Information,
Address**

H. L. SWEENEY,	R. F. PENN,
City Pass. Agt.	Trav. Pass. Agt.

**S. W. Cor. 4th & Main
LOUISVILLE, - KENTUCKY**

denial will enable us all to have a part in this campaign. May God's people offer themselves willingly, and prove this the day of his power.
Eliza S. Broadus.

Kentucky Mission Monthly 25 cents per year.

Apportionments.

In reply to many inquiries, the Apportionment cards, Standard of Excellence cards and other literature will be sent to the societies in about two weeks.

Miss Margaret Buchanan, Corresponding Secretary of the W. M. U. of Tennessee, attended the Training School Commencement and visited the W. M. U. office the past week.

Miss Mary Lyne, State Sunbeam Leader, after a two weeks' vacation at her home in Russellville will have a part in the work at Pineville for the summer months.

Mrs. Gough, formerly field worker in Georgia, but recently from our W. M. U. Training School, will be engaged in the work in East Union Association during the summer months.

Miss Mattie Wilson and Miss Sallie Priest of China are making the Association Conferences. No woman can afford to miss the one for her Association.

Mrs. G. W. Perryman and Mrs. E. G. McLean, from Africa, are in the church to church campaign in Shelby County Association. Mrs. J. C. Quarles, of Uruguay, will take Mrs. MacLean's place the latter part of the campaign.

Mrs. E. B. English, Superintendent of Tate's Creek Association and Mrs. B. F. Petty recently visited and organized societies in Maple Grove, Viney Fork and Waco churches. Mrs. English says she visited one other that was not ready for an organization and has written three others to make engagements. She requests a W. M. U. speaker for the next meeting to be held at Waco, August 29th. Also says, "Mrs. Petty is the finest co-worker in this State." This indicates a new day of advance for Tate's Creek W. M. U.

Systematic and Proportionate Giving.

The Woman's Missionary Society of Bardstown Baptist Church having failed to reach their apportionment in 1914, 15 decided to try a new plan or rather God's plan, and that is for each woman to give so much per week and we reached our apportionment without any of the strain and stress of previous years. We have always given ten cents a month dues and made extra offerings for Home, Foreign and State Missions, but now we have done away with dues entirely; some give five cents a week,

some ten, some fifteen, some twenty and some twenty-five and then we also make offerings at our weeks of prayer. If we could get all our women to give systematically and proportionately, our gifts would increase many fold. Take the women of our association (Nelson) for example—they gave last year \$1,154.64 cash for missions, and counting the women at ten cents per week and the Y. W. A.'s at five cents per week, would make a sum total of \$2,069.60. Some would give less perhaps but many would give more and we would largely increase our gifts and in a short while. There are 200,000 women enlisted in the W. M. U. of the South. If each woman would average ten cents per week, we would bring into the Treasury of our Lord \$1,040,000. Of course, many of them would give much more, and we would soon be pressing up into the millions simply by using a systematic method. "Let all things be done decently and in order."—Mattie Wilson.

THE EVERY MEMBER CANVASS.

The every member canvass grows in favor with churches and pastors who do things. When men have felt the moving power of Christ are they capable of moving others?

In many churches, members do not give because they have never been approached. Others give only sporadically who could be induced to give regularly.

Many do not average ten cents a week when they could easily be induced to give twenty-five cents a week.

It leads many into an active Christian life.

INCENTIVES TO PRAYER.

Call unto me and I will answer thee and will show thee great things and difficult, which thou knowest not.—Jer. 33:3.

Pray ye the Lord of the harvest that he send forth laborers into his harvest.—Matt. 9:38.

It counts to pray. In some way not yet fully understood, prayer releases omnipotent forces.—W. L. Ferguson.

Let us in faith not fear to accept and yield to the great truth that intercession as it is the great work of the King on the throne, is the great work of his servants on earth.—Andrew Murray.

When the Church sets itself to pray with

Important Announcement

In the territory of the

Southern Baptist Convention

We are face to face with some great problems—problems of readjustment that will call for

Serious, Prayerful Thinking

By men who are capable of thinking through a subject, and who are not satisfied to jump at conclusions.

The Baptist World

is fortunate in having such men on its editorial staff.

Can you afford to miss what they will have to say?

All the editorial writing of the Baptist World is done by the members of the Faculty of the Southern Baptist Theological Seminary under the direction of Dr. E. Y. Mullins, Dr. John R. Sampey and Dr. A. T. Robertson

These men have no other object in view than to serve the Kingdom of Christ through the Baptist denomination.

To help accomplish this great object we invite the

Co-operation of
Kentucky Baptists

Read

The Baptist World

With minds and hearts open to the best interests of the cause

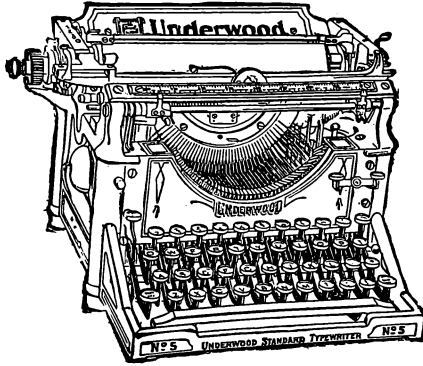
Price \$2.00 per Year in advance

Baptist World Pub. Co.

Incorporated

716 5th Street Louisville, Ky.

RENT AN



Underwood Typewriter

Demanded by those
who know machine
merit.

Most popular with largest corporations
and all Champion operators.

“The Machine You Will Eventually Buy.”

the same seriousness and strength of purpose that it has devoted to other forms of Christian effort, it will see the Kingdom of God come with power.—Edinburgh Conference Report.

IN KENTUCKY.

James H. Mulligan.

The moonlight falls the softest,
In Kentucky;
The Summer days come ofttest,
In Kentucky;
Friendship is the strongest,
Love's light glows the longest,
Yet, worry is always wrongest,
In Kentucky
Life's burdens bear the lightest,
In Kentucky;
The home fires burn the brightest,
In Kentucky;
The sun shines ever brightest,
In Kentucky;
The breezes whisper lightest,
In Kentucky;

The dove notes are the saddest,
In Kentucky;
The streams dance on the gladdest,
In Kentucky;
The song birds are the sweetest,
In Kentucky;
The thoroughbreds are fleetest,
In Kentucky;
The mountains tower proudest,
Thunder peals the lightest,
In Kentucky.

Our Evangelists, Missionaries, Colporters, and other workers are bestirring themselves in behalf of the Master's cause.

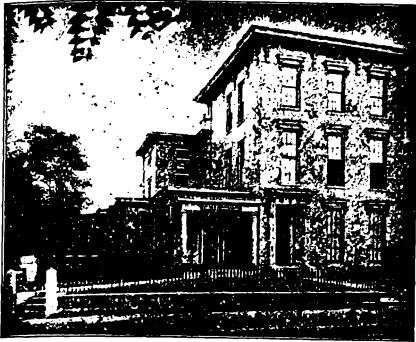
We have five great departments of work:

(1) Missionary; (2) Church Edifice; (3) Education; (4) Benevolence; (5) Students' Fund.

Some of these interests formerly had separate Societies with a full complement of officers, but now all are under one organization at the minimum of expense for administration.

Only won men can win men.

A CHAPEL FOR PATRONS



LEE E. CRALLE

Funeral Director

S. W. Cor. 6th and Chestnut Sts.
Telephone Main 430

LOUISVILLE, - KENTUCKY

**We Print College
Catalogues, Booklets,
Phamphlets, Tracts,
Wedding Invitations,
Cards,
Anouncements Etc.**

MOLL & CO.

Incorporated
120 S. First St. Louisville, Ky.

Home Phone 351 Correspondence Solicited

**BLUM ORNAMENTAL
GLASS COMPANY**

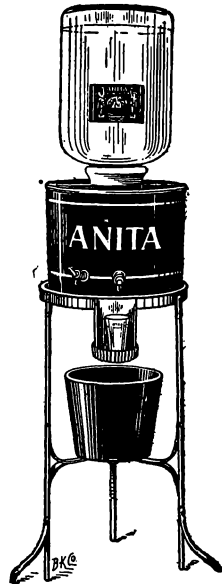
INCORPORATED

Maker of Church Windows

640 Third St. Louisville, Ky.

“ANITA”

AMERICAN LIGHTEST WATER
Always Pure, Fresh & Invigorating



THE BEST COOLER ON THE MARKET

Anita Spring Water Co.

INCORPORATED

PHONES { Home 4520
Cumb. M. 1468-A

Our New Plant, 210-212 Pearl St.
LOUISVILLE, KY.

-----WE ARE-----

MANUFACTURERS OF

MONUMENTS

Of High Class, But Moderate Prices

Peter-Burghard Stone Co.

SALESROOM

317 W. Jefferson St.

PLANT

13-14 Maple St. Louisville, Ky.

Important New Books

WE WOULD SEE JESUS Geo. W. Truett, D.D., Price \$1.00

Anyone who has heard this matchless preacher will want to read this book of his choice sermons, together with a life sketch by Dr. Cranfill. Dr. Truett has a way of saying things which grips the heart.

ACRES OF DIAMONDS Russell H. Conwell, Price \$1.00

A lecture which has inspired thousands of people now appears in book form, together with a brief-sketch of Dr. Conwell's life. This lecture has been delivered over 5,000 times and has earned \$400,000. A wonderful source of inspiration.

A MAN AND HIS MONEY H. L. Winburn, D.D., Price 50c

A book for layman. It would be strange if a business man should launch an enterprise costing millions of dollars a year without provision to finance it. It would be stranger still if God had launched His Kingdom enterprises with their immense cost and made no financial plan. This book discusses the subject.

EVERY DAY GLADNESS Fannie E. S. Heck, Price 50c

Happiness is a universal quest. All mankind is seeking it, and the message of this book is that to find it, life must be marked by harmony, beauty and power. These splendid qualities find true expression only when Christ is made the great Pattern for life and conduct.

A Joyful Messenger **THE HERALD** A Song Book with a Message

By the Compiler of

THE EVANGEL

THE NEW EVANGEL

THE WORLD EVANGEL

Printed in Round and Shaped Notes

Manilla—\$12.50 per hundred \$2.00 per doz., carriage extra;
Single copy, 20 cents, postpaid.

Cloth Board—\$20.00 per hundred \$3.00 per doz., carriage extra;
Single copy, 30 cents, postpaid.

Write for rates in quantities.

Baptist Book Concern 650 FOURTH AVENUE
Incorporated LOUISVILLE, KY.