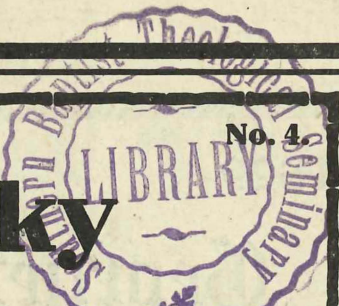


RPP
K419uermis

Vol. XVII.

Baptist Seminary Library
500 W Broadway
St

No. 4.



Kentucky

Mission Monthly

OFFICIAL ORGAN OF KENTUCKY BAPTISTS

Entered Feb. 5, 1903, at Louisville, Ky., as Second-class matter, under act of Congress, March 6, 1879.

AUGUST, 1917

25 Cents a Year

W. D. POWELL,	- - - - -	EDITOR
MISS E. S. BROADUS,	-	EDITOR WOMAN'S DEPT.
A. E. WOHLBOLD,	- - -	BUSINESS MANAGER



REMEMBER THE ORPHANS.

Let every Church take an offering during August for the maintenance of more than One Hundred Orphans. The task of the Kentucky Baptist Children's Home, Glendale, Ky.

WANTED \$12,000!

Send funds to W. D. POWELL, Sec'y. and Treas.

Published Monthly at 205 East Chestnut St., Louisville, Kentucky

1829

1917

Georgetown College

Eighty-eighth session will open September 11, 1917. Standard four-year college. Fifteen units for entrance. B. A. and B. S. degrees. New and extensive scientific equipment offering major work in the fundamental sciences. Strong courses in industrial, social and civic subjects. Enlarged department of the Bible and new religious courses.

Courses in the Bible, Bible Doctrine, Church and Sunday School activities, Ethics of Jesus, Biology, Botany, Histology, Physiology, Zoology, Chemistry (12 courses), Education, Psychology, English (13 courses), French (6 courses), German (14 courses), Greek (9 courses), Latin (8 courses), History, Economics and Political Science (14 courses), Mathematics and Astronomy (10 courses), Mechanical Drawing and Applied Mechanics (6 courses), Philosophy and Ethics (2 courses), Physics (12 courses), Spanish (2 courses), Expression (4 courses), Home Economics (4 courses), and Physical Culture.

The U. S. Government urges all young men and young women graduating from high school to enter college in September, in order to furnish both during the war and in the trying days of reconstruction which will follow, the needed supply of thoroughly educated men and women. Let Kentucky bring up her quota of college students and let Kentucky Baptists fill the Kentucky Baptist colleges. Loyal patriotism to State and nation is the watchword.

The spread of Democracy is the Baptist opportunity. The Baptist opportunity is thrown away unless educated Baptists enter the open doors. Educate your children so they can aid in the building up of the new world which will follow the war. Shall Baptists have a hand in it?

Accredited School of Music. Excellent living accommodations at moderate cost. Write for information to

**President M. B. ADAMS,
Georgetown, Ky.**

The Kentucky Mission Monthly

"LET HIM THAT HEARETH SAY COME"

VOL. XVII.

AUGUST, 1917

No. 4.

... EDITORIAL ...

W. D. POWELL Editor

O. E. BRYAN. Associate Editor

THE GREATNESS OF STATE MISSIONS.

Our State Mission work is aggressive, progressive and constructive.

Our State Mission forces, with great unanimity, make great campaigns for lost souls. This militant missionary campaign results in getting hundreds of men into that narrow way that leads to life eternal. They go out from beaten paths into neglected neighborhoods and communities.

We are also making persistent effort to strengthen weak churches in our cities and to plant new ones at destitute points. Our churches to grow must go. No arithmetic can calculate the good that is accomplished by the organization of a New Testament church which will continue its work through the centuries. Our forces do much to develop the virility of new churches and strengthen and confirm them in the faith. Too many churches are filled with weaklings. At many points there is need to cultivate a denominational spirit and render aid in securing capable pastors and sowing down the community with religious literature.

Paul took great pains to develop the churches. We do much in the way of Enlistment. Paul seems to have done as much or more in the line of Enlistment as he did along the line of Evangelism. Our enlistment men, by wholesome church-to-church campaigns, have largely increased the Budget of those churches for all objects fostered by our State Board of Missions.

One of the strong points of our State Board is our Church Building Fund. We are constantly doing great things in the way of housing weak churches.

The Russians, a few weeks ago, made a mighty forward movement, but they are now being driven back with great loss and

in great disorder and confusion. The reason for their retreat is they had advanced too fast.

State Missions strengthens the home base of all our denominational undertakings. The light that shines brightest shines farthest. "The advancement, the enlargement and the intensification of State Mission work is absolutely essential to the maintenance and further projection of our worldwide missionary enterprise." The program of the New Testament never contemplated any discrimination in favor of State Missions as against the Foreign work, nor in favor of the Foreign work as against State work. The heart of the Great Commission sets forth one great task—to seek and to save the lost. We must increase our efforts for State Missions. The amount we need between now and October 31st is great. We have not been accustomed to closing with a debt, and by all means we must not this year when money is so plentiful and the doors to men's hearts stand so wide open.

State Missions has done great things for Kentucky. It has irrigated arid plains and made them to bring forth abundant harvests; it organizes churches, Sunday Schools, Woman's Missionary Societies, B. Y. P. U.s, and other agencies which maintain our principles and train our people for service. Each year some of our weak churches are brought to the point where they become self-supporting and independent. We have some work being done in every part of the State. Let our pastors preach about State Missions, let our people pray for State Missions, and let our men and women give generously to State Missions.

Rev. J. W. Crow, who has worked industriously and effectively at Jenkins and community, resigns to engage in mission work among mountain schools. We wish him every measure of success.

WHAT STATE MISSIONS DOES.

I have penetrated every nook and corner of the mountains, prosecuting State Mission work. I met a Methodist preacher who became dissatisfied on the question of baptism. At the end of a long examination, he severed his connection with his Conference and I baptized him. He has been zealous and has organized several churches and built several church houses and more than 500 have been converted under his preaching and baptized by him. He held a meeting in a tobacco barn in a community where the Baptists had never preached. A number were converted, and today that is one of our strong churches.

State Missions is largely responsible for the tremendous growth of the Baptists in the South. It is a sin for us not to hasten the Word of Life to those who are conscious of their need of it. There is dire need of preaching today in a hundred neglected communities in Kentucky. We need the money to employ faithful men to reach those who are without Christ. Will you help us?

The State Board of Missions requests that each Sunday School shall, some time in August, make a special offering for the Children's Home at Glendale. Each man, woman and child is asked to contribute, as a minimum, the proceeds of one-day's labor toward this noble object. This is to feed, clothe and care for the orphans. The State Board of Missions pays \$18,000 a year in monthly payments to the Glendale Children's Home. This must come to us through the churches, Sunday Schools and individuals. We have paid \$12,000 in excess of our receipts. Kentucky Baptists must rise en mass and pay this amount in full so as to relieve our embarrassment. We love those orphan children. We realize our responsibility and we must heroically meet it. It would be a wise thing if some Baptists would contribute large sums. Hurry the money to this office. This is not for equipment. It is to meet our solemn obligation for the salary of the Superintendent, matrons, teachers and the feeding and clothing of those children. They offer one hundred reasons why every one should give.

The church at Arkadelphia, Ark., is raising right now \$700 to pay on the debt of the Orphans' Home in that State. Dr. B. B. Bailey, the pastor, and an ex-Kentuckian, is quite hopeful that his desire will be realized.

A DEMONSTRATION.

Ten years ago, I met with some earnest people in a coal house in this city, where a Sunday School was being conducted. With some aid from State Missions, a piece of ground was bought and a cheap house was erected, the house costing not over \$600. It was well filled from the very beginning. The membership was enthusiastic and did fine team work. The men's class grew until they were compelled to purchase some cheap lumber and build a separate room for their accommodation. Some rooms were added also for the smaller children. Finally, with some help from the State Board, a splendid building has been erected on a good lot and Deer Park Church has become one of the most active, aggressive bodies of all the Baptist churches in Louisville. Their pastor is a live wire. Their men's class leads all classes of that character in the city. This is a sample of what State Missions is doing at numberless points in our State.

THIS LOOKS ENCOURAGING.

In comparing the gifts of Kentucky Baptists for eight months we find that they have contributed \$57,950.51 to State Missions; \$29,279.04 to Home Missions and \$42,530.05 to Foreign Missions. During the same months in 1916 the churches contributed for State Missions \$50,826.60; for Home Missions \$23,498.84, and for Foreign Missions \$36,940.40. This shows a net increase of \$7,123.91 for State Missions; \$578.20 for Home Missions, and \$5,589.65 for Foreign Missions.

Let no one be deceived by this apparently favorable showing. Our appropriations for these bodies for the year 1917, are much larger than for the year 1916. We are largely overdrawn in the bank and we are in urgent need of funds for every item supported by the Budget.

HOW DOES THIS STRIKE YOU?

It takes \$50 a day to feed, clothe and care for our orphans at Glendale. Dear reader, suppose you support that institution for one or two days. "He that giveth to the poor, lendeth to the Lord." Christ will say to you in that great day, "Inasmuch as ye did it unto one of the least of these my brethren, ye did it unto me." What a glorious work! A great opportunity! Sit right down and send us a check for one hundred dollars and support this worthy institution for two days. That is what the writer intends to do. How many will join him?

"Efficiency is the word and Enlistment is the work'."

The fathers forgot how many years it took them to reach their positions of enlightenment. How many missionary sermons and missionary pages it took to penetrate their minds, made dull by unreasoning prejudice! How the grace of God made known in the Gospel, illumined by the spirit, had to bombard their proud wills until they were broken down! They forgot all this because their brethren, less fortunate than they, by reason of environment, did not immediately come over to their way of thinking. They called them stingy Hardshells and let them go.

W. B. Crumpton.

REMEMBER OUR OLD PREACHERS.

The State Board of Missions collects all funds for the support of our aged and infirm ministers. We have guaranteed payment at the rate of \$4,000 per annum. We are in urgent need of funds for this worthy and deserving object. Let churches and associational treasurers hurry the money to us to meet the wants of those who have worn out their lives in the Master's service.

We would remind the friends of Christian Education that the Budget is largely overdrawn for this worthy object. We do not see how the Baptist cause could prosper without our denominational schools. Let the funds needed be forthcoming.

A GOOD WORK.

Our State Board has determined to cooperate with the colored people in securing good headquarters for Sunshine Center. Effort is being made to secure a piece of property at a great bargain in the Black Belt of this city. It is hoped that the funds will be forthcoming to pay for the same. We need \$4,000.

When F. R. Walters closes his present engagements for Associational campaigns, he will locate at Manchester as Pastor and invest his life for the building up of the Cause in that town and in Clay County. He is a great religious force and we shall expect a wonderful development as a result of his earnest and intelligent efforts. He is one of our strong preachers and a fine organizer, and we are sure that he will accomplish much good.

We wish to encourage our missionaries to form the habit of always looking on the bright side of life. Throw your whole life and spirit into your work. Accept cheerfully the place God has assigned you and go bravely forward. It is a sin for you to worry. Be courteous and kind to those among whom you labor, preserving a child-like trust in your Heavenly Father.

Dr. W. B. Crumpton has written a beautiful story on "How a Kentucky Mountain Boy Made Good." It is very entertaining and very helpful.

The Baptists are very numerous in North Louisiana because the bulk of State Mission work has been done there.

Maryland centered her forces for many years on Foreign Missions. As a consequence, only one person in every hundred in Maryland is a Baptist. They now see their mistake and are industriously pushing State mission work.

It would be a noble thing for some of our men and women to give as much as \$1,000 each toward the current expenses of the Baptist Children's Home at Glendale.

A DECADE OF SERVICE WITH VICTORY.

O. E. Bryan.

Dr. W. D. Powell has very graciously consented to stay with the work in Kentucky until the first of November. He does this, notwithstanding the fact that the American Baptist Home Mission Society needs him very much in their Fall Campaign. The papers have already published the fact that Dr. Powell has accepted the work with the Northern brethren. He feels that the Spirit of the Lord is leading him in this work, yet he makes the sacrifice to stay with the Kentucky situation until the Association year is closed. October first will close ten years of strenuous service by Dr. Powell for the Baptists of Kentucky. This decade marks an epoch of unprecedented progress in the mission work of this state. In the coming years this untiring servant will be remembered as a great pioneer of missions in Kentucky. Let us not wait until he is dead to honor him. Let us break the alabaster box now; let us give the flowers now; let us speak the kind words now. The one thing that would delight his heart most is that Kentucky Baptists would pay every dollar of our more than \$50,000 Budget debt before the meeting of the General Association, at Paducah, in November.

Last winter when Dr. Powell was preparing to go to Mayo Brothers, in Rochester, for a very delicate and dangerous operation, he was placing his house in order as if he knew he would never come back. After the office force had gone he went over the most important part of the work with his assistant. He said, I may not come back. If I should die under the operation which may have been postponed too long, I want you to say to the Baptists of Kentucky that I did not mean to commit suicide by staying with the work until after the recent campaign had closed, disregarding the advice of my physician. Notwithstanding the fact that I have my faults, the Lord knows my heart, that I would rather die any day than to see my Master's cause go down in defeat.

As a token of our appreciation of Dr. Powell's ten years of strenuous service let us pay every dollar of the debt, and do it gladly.

DEDICATION OF BENTON BAPTIST CHURCH.

O. E. Bryan.

On Sunday, July 29th, the writer was with Pastor J. G. Prather in the dedication of Benton Baptist Church in Mercer County. This is a beautiful, little, modern, country church with Sunday School department, situated among the modest hills of the blue-grass. After the sermon, we raised the entire indebtedness of \$500 and proceeded to dedicate the house.

Dinner was served on the ground where more than a thousand people were fed. It was all up to the good old Kentucky standard.

Brother J. A. Lee is in a meeting with this good church. We expect to hear good reports of this work.

This is a fine time to look out for young men and young women for Georgetown, Bethel and Cumberland Colleges and our excellent secondary schools. Let everybody get busy and induce those who have finished at High School to go on and finish their education where their moral and spiritual needs will be looked after as well as their intellectual improvement. These Christian schools are engaged in character building. We commend them in unstinted terms to our patrons.

Our young ministers who have completed their college course and others who do not think of taking more college training should correspond with Dr. E. Y. Mullins about entering our Theological Seminary in this city. You will find there some of the finest teachers in the world and an opportunity to prepare for great usefulness in life.

We urge our W. M. U. friends to remember that State Missions is now relieving the Home and Foreign Boards of thousands of dollars of expense and therefore these organizations ought to increase their gifts to State Missions in like measure. We believe in our Woman's Missionary Societies and are sure they will stand by us in any laudable undertaking.

PREPAREDNESS

for a wholesome life, or

ENLISTMENT

*for a life of service, means Christian
Education for our Baptist Young men.*

Bethel College serves Western Kentucky.

Financial help for ministerial students.

If interested, send for catalogue to

President ROBERT H. TANDY, D. D.

Russellville, Ky.

CHURCH FURNITURE and SUPPLIES

Church Furniture

Pews

Pulpit Furniture

Communion Tables
and Chairs

Church Accessories

Alms Basin

Hymn Boards

Communion Cup

Holders

Envelope Holders



For the Sunday School

Auditorium

(Opera) Chairs

Folding Chairs

Floor Covering

Cork Carpet, Linoleum

Rubber Matting

Janitor's Supplies

Sweeping Compound,

Brushes, Etc.

AMERICAN SEATING COMPANY

GENERAL OFFICES, 14 E. Jackson Blvd., CHICAGO, ILL.

Sales Offices in all Principal Cities

... SUNDAY SCHOOL DEPT ...

WALTER L. BROCK, General Secretary.
 PAUL POWELL, Field Secretary.
 205 E. Chestnut Street, Louisville, Ky.

Standing to date of five leading States, July 31, 1917:

Normal Diplomas—Texas, 7,464; Kentucky, 5,028; North Carolina, 4,447; Georgia, 4,167; Mississippi, 3,587.

Red Seals—Texas, 1,153; Kentucky, 1,001; Alabama, 629; Mississippi, 575; Georgia, 558.

Blue Seals—Texas, 613; Kentucky, 586; Alabama, 332; Georgia, 273; Mississippi, 258.

Normal Diplomas issued in Kentucky during July, 1917:

Long Run—Mrs. Lewis C. Bailey, Mrs. Ada D. Deering, Laura Belle Franklin, Mrs. C. J. Gowens, Mauda Horner, Fern Keplinger, Lizzie Miller, Ethel Riley, William Sharp, Mrs. R. R. Trent, Edward B. Whitaker, Mrs. E. B. Whitaker.

Sulphur Fork—Mrs. J. H. Dehoney.
 Liberty—Bettie Toddy.

Colored—Claude Beaumont, Mrs. Maggie Beaumont, Albert L. Johnson, Louis A. Johnson, Jr., Henry Miller, Leola Miller, Mrs. Margaret Offutt, Monroe Oglesby, Mrs. Mattie B. Taylor, Anna L. Minor.

West Union—Mrs. Carrie E. Morton, Lillie Ogilvie.

Red Seals issued in Kentucky during July, 1917:

Pulaski County—Bettie Toddy.
 Blue Seals issued in Kentucky during July, 1917:

Union—C. W. Elsey, Mrs. C. W. Elsey, Mrs. J. L. McDonald, Logan Maffett.

Gold Seals issued in Kentucky during July, 1917:

Union—Mrs. J. L. McDonald.

The following is a list of Normal Diplomas by Associations ending July 31, 1917:

Long Run, 831; Blood River, 456; Elkhorn, 403; North Bend, 274; West Union, 223; Pulaski County, 179; Bethel, 178; Daviess County, 157; Campbell Co., 141; Three Forks, 97; Graves Co., 93; Bell Co., 90; Nelson, 89; Union, 87; Wayne Co., 81; West Kentucky, 79; Bracken, 77; South District, 70; Little River, 70; Ohio River, 65; Muhlenberg, 63; Enterprise, 63; Mt. Zion, 62; Ohio Valley, 59; North Concord, 58; Ohio Co., 56; Baptist, 56; Shelby Co., 56; Concord, 54; Tate's Creek, 51; East Union, 50; Russell's Creek, 49; Greenup, 48; White's Run, 47; Breckenridge, 44; Franklin, 39; Salem, 37; Liberty, 36; Crittenden, 35; Severn's Valley, 32; Warren, 26; Little Bethel, 24; Boone's Creek, 21; Central, 19; Freedom, 17; Goshen, 17; Allen, 16; Lynn Camp, 14; Russell Co., 14; Oneida, 13; Rockcastle, 13; Laurel River, 12; Simpson, 12; Lynn, 11; South Kentucky, 8; Upper Cumberland, 8; Ten Mile, 6; East Lynn, 5; Logan Co., 3; Barren River, 2; Henry Co., 2; Gasper River, 1; Owen Co., 1; Colored, 22. Total, 5,070. Transfers and Duplicates, 42. Balance, 5,028.

SUNDAY SCHOOL STATISTICS.

Number Baptist Churches in Kentucky.....	1857
Number Baptist Sunday Schools in Kentucky.....	1409

Number Baptist Churches without Sunday Schools	448
Number Baptist Church Members in Kentucky	250,296
Number enrolled in Baptist Sunday Schools in Kentucky	140,008

Number Baptist Church Members not enrolled in Sunday School	110,288

Teacher Training in Kentucky

Normal Diplomas	5001—Total to July 1, 1917
Red Seals	1000—Total to July 1, 1917
Blue Seals	581—Total to July 1, 1917
Post Graduate Diplomas	48—Total to July 1, 1917
Gold Seals.	23—Total to July 1, 1917

Kentucky stands second in the Southern Baptist Convention in number of Normal Diplomas, Red Seals and in Blue Seals; fifth in number of Post Graduate Diplomas and fourth in Gold Seals.

Organization

A-1 Standard Sunday Schools in Kentucky to July 1, 1917	9
Organized Adult Bible Classes in Kentucky up to July 1, 1917	63
Number members enrolled in Org. Adult Bible Classes to July 1, 1917	1645

Kentucky stands sixth in the Southern Baptist Convention in number of A-1 Schools, ninth in number of Organized Adult Bible Classes, and eighth in number of members enrolled in Organized Adult Bible Classes.

The following statistics were taken from the 1916 Association Minutes and show some very interesting facts. One of the best equipped Sunday Schools and one of the badly equipped Sunday Schools in city, town and country of Kentucky are compared, the churches being equal in wealth and equal in number of church members.

CITY

Sunday School With Good Equipment
 Church Members) S. S. Enrollment) Same
 75 per cent of baptisms come from the S. S. This Church contributed to causes fostered by the denomination (Missions, etc.) 43 per cent more than the church with bad equipment.

Sunday School With Bad Equipment.
 Church Members) 50 per cent of Church S. S. Enrollment) Members enrolled in S. S. 45 per cent of baptisms come from the S. S.

TOWN

Sunday School With Good Equipment
 Church Members) S. S. enrollment 48 per S. S. Enrollment) cent larger than church enrollment. 100 per cent of baptisms come from the S. S. This Church contributed to causes fostered by the denomination (Missions, etc.) 83 per cent more than the church with bad equipment.

Sunday School With Bad Equipment.
 Church Members) 69 per cent of Church S. S. Enrollment) Members enrolled in S. S. One member baptized in the church. No baptisms from the S. S.

COUNTRY.

Sunday School With Good Equipment
 Church Members) S. S. enrollment 37½ S. S. Enrollment) per cent larger than church enrollment.
 Percentage of baptisms from the Sunday School about the same in each church.
 This Church contributed to causes fostered by the denomination (Missions, etc.) 743 per cent more than the church with bad S. S. equipment.

Sunday School With Bad Equipment.
 Church Members) 27 per cent of Church S. S. Enrollment) Members enrolled in S. School.

Can any church today (city, town or country), afford not to provide adequate Sunday School equipment in face of the above figures?

If there adequate equipment and the teachers are untrained, what profit? Can any church (city, town or country) afford not to train its teachers?

A-1 Schools in Kentucky.

Murray Baptist Sunday School, Murray—H. B. Taylor, Pastor; Barber McElrath, Superintendent.

First Baptist Sunday School, Cynthiaiana—C. W. Elsey, Pastor.

First Baptist Sunday School, Russellville—Homer Felts, Superintendent.

First Baptist Sunday School, Williamsburg—E. F. Wright, Pastor.

Whitesville Baptist Sunday School—A. C. Hutson, Pastor.

Latonia Baptist Sunday School—Rev. T. C. Crume, Pastor; H. G. Rardin, Supt.

Walnut Street Baptist Sunday School—Rev. H. L. Winburn, Pastor; C. S. Leavell, Supt.

.. WOMEN'S DEPARTMENT ..

CENTRAL COMMITTEE

Miss E. S. Broadus.....Chairman
 Mrs. B. G. Rees.....Treasurer
 Mrs. Janie Cree Bose.....Cor. Sec.
 205 East Chestnut, Louisville, Ky.

SUNSHINE CENTER.

What it is.—On Chestnut Street in Louisville, near Tenth, in a region where many of the negroes live, and children in multitudes may be seen upon the streets, this Settlement work was started about two years ago in a frame house, and has been supported jointly by our State Mission Board and the Woman's Home Mission Society of the West. A charming young woman from our Training School took charge, and is still at work there, though she has changed her name and estate. Her husband is associated with her, and Mr. and Mrs. Blair are admirably fitted to the task. The Louisville Baptists among the Negroes loyally support it, giving of their means and of their time and efforts. Here, a Vacation Bible School is being carried on this summer, and some of the ladies who go to tell Bible Stories are enthusiastic about the good attention of the boys and girls, both little tots and those up to fifteen. Nearly a hundred are there for Bible teaching and instruction in handicrafts, under many disadvantages of crowded rooms and inadequate provision for comfort. Built right upon the sidewalk when the heat compels the doors of the school to be open, every time a street car passes, some one must shut the door if the speaker is to be heard. All the year round there is a Sunday School, and weedy-day classes and clubs, radiating sunshine all about.

What it hopes to be.—Only a square away there is for sale a well-built brick residence, extremely well adapted to the needs of this mission, and to own it would give a permanence to the work, and widen its scope. The Negroes will undertake to pay one-third of the price, and surely the white Baptists will not let slip such an opportunity to do great good with six thousand dollars. The room, which would make a good chapel and

assembly room, is far enough back from the street to avoid all disturbance from passing vehicles, and separate class rooms are in abundance. Our State Board will have charge of the enterprise, and our W. M. U. will heartily co-operate.

Good News.

1. The \$7,000 apportionment to the Kentucky W. M. U. for the Building Fund of the Training School has all been paid in fifteen months, and the Central Committee are grateful to God for blessing their efforts, and to every woman who has helped to bring about this happy result. It will be recalled that of the first \$52,000 given for the fund, Kentucky gave \$6,000, so that our whole amount is \$13,000. This does not include any part of the \$30,000 pledged last winter in the "Louisville Campaign," of which a considerable portion was promised by members of the W. M. U. These pledges have still eighteen months to run, but so many are paying up promptly that more than a third is already in hand.

2. It is a pleasure to record that Miss Flora Dodson of Monticello, will be supported in China this first year by Mr. and Mrs. Ancol Archer of Williamsburg. Another generous giver of this church, Mrs. Joie Mahan, offers a Training School Scholarship for three years, the first recipient being Miss Annie Allen, who is at work in the mountains, this summer, after a few months in the Training School. Miss Allen is a granddaughter of Dr. Samuel Baker, long a useful minister of Jesus Christ and her mother has been a helpful worker in W. M. Societies. This leaves one of our State Scholarships vacant, but it is likely soon to be filled.

Southeastern District Institute.

Meeting, at McKinney, July 18th, the women from a number of Associations in the District was a rare pleasure. Mrs. W. E. Hunter, of Somerset, the Vice-President, has a genius for such undertakings, and is never dismayed by difficulties. She has found Superintendent for several Associations, and started societies in new localities. Where no society can yet be organized, she sometimes begins with a woman's prayer meeting, and in yet other churches the women are persuaded to give the money from their Sunday eggs to the cause of missions.

Thank God for all these women. It is always delightful to discover new people, and to learn the unexpected capacities of some of those one has long known. May these conferences and discussions bear rich fruit.

An offer of a seat in Pastor Athey's machine gave the writer the treat of a ride all the way to Harrodsburg, and the "Boone Road" part of the Dixie highway is one to enjoy greatly.

Now for State Mission.—August and September are our special times for laying great stress on our part of the Budget for our own State work.

Besides all other claims upon our interest and our gifts, we are in common gratitude bound to labor heartily for the State Mission Board, since it has assumed the payment of all our expenses, amounting to \$3,000 a year. This includes salaries of our two secretaries, half-time of a stenographer, postage and printing and travelling expenses. We are allowed twenty-five dollars a month to use in sending a field worker or a Vice-President where that seems best, to needy points. This does not do away with the Associational Expense Fund, but is to be used where there are very few societies in an Association, or it is altogether new ground, so that local expense funds are impossible.

Of course, we want to help support missionary pastors and evangelists, build churches on new fields and have a part in all the activities of our State Mission Board. A suggested program will be sent out for a special day in September, but begin now to save or collect for this offering.—E. S. B.

State Mission Day.

September 27th is W. M. U. State Mission Day, and we do hope that every society in Kentucky will observe this day of prayer for State Missions and will bring to the meeting an offering for the work in our own State. We need a much larger offering this year than we needed last year. The work has opened up and we have many more opportunities than we had last year. Surely we will be equal to the need and come to the rescue of our State Board with the most generous offering ever given by the W. M. U. for State Missions.

Literature Coming.

In a few days you will receive a package

from the W. M. U. Office, which will contain the program for State Mission Day, with literature to help make this program possible, also a copy of the new Year Book. We will send a sample of the envelope for State Mission Offering and as soon as you let us know the number you can use, we will be glad to send that number to you at once. Write for State Mission Envelopes to W. M. U. Office, 205 East Chestnut St., Louisville, Ky.

"In Jerusalem."

The subject for study during August is "In Jerusalem." The work in our cities. We would like to call the attention of our Y. W. A.'s and G. A.'s to their definite work for State Missions, the support of our City Missionary, Miss Emma Leachman, who is carrying on a wonderful work in the City of Louisville among the poor and needy, among the heart-sick and the sin-sick. Young women and girls, Miss Leachman is representing you if you support her in this great work. Perhaps you cannot leave home and home duties, to do this work yourself, but if you contribute to the support of this city missionary and if you support her with your prayers, you will be helping in the work of City missions.

What is the Aim of Our Settlement Work?

1—To reach the little children, that their tiny feet may be started in the upward path.

2—To inspire the older boys and girls with ideals that shall help them to improve their environment and shall give them strength against the awful temptations that sweep over them.

3—To interest the young people in sane and wholesome pleasures, that their energies may be rightly directed.

4—To help the women to be better home makers, more careful wives and mothers, better Christians.

5—To give Christ to the neighborhood.

Our Needs for State Missions.

The W. M. U. alone must raise during the next three months four thousand and seven hundred dollars (\$4,700) for State Missions if we are to reach our apportionment for the work of our own State. This is about one thousand dollars more than we raised for State Missions during this same quarter last year. We more than met our apportionments for Home and Foreign Missions during our past Convention year, and surely



THE HENDERSON ...ROUTE...

BETWEEN

LOUISVILLE AND ST. LOUIS

DAILY 8:35 a. m. - 9:48 p. m.

FOR EVANSVILLE

8:35 a. m. 5:05 p. m. 9:48 p. m.

Observation Parlor Cars and
Pullman Sleeping Cars Thru

For Rates or Further Information,

Address

H. L. SWEENEY, R. F. PENN,
City Pass. Agt. Trav. Pass. Agt.

S. W. Cor. 4th & Main

BOTH PHONES 1134

LOUISVILLE, - KENTUCKY

we will not do less for the work right here at home. Let us at least meet our apportionment of \$7,150. Nine months of the State Convention year gone and so little has been sent in during that time for our State work. Women, let us work, pray and plan for the greatest State Mission Day ever held in Kentucky and let us not let Dr. Powell, after ten years of faithful service, leave us with a debt on the work so near his heart, the work of Kingdom Building in Kentucky.

We are in urgent need of funds for the support of State Missions, Home Missions, Foreign Missions, Christian Education, the Children's Home at Glendale, Ministerial Education and old Ministers' Aid. We have bought a property on Madison Street between Tenth and Eleventh for Sunshine Center. This is the headquarters of our missionary endeavor among the colored people of this city. We need \$4,000 from the white Baptists of our State and \$2,000 from the colored Baptists to meet our payments. We urge the friends to help, and that right speedily.

OUR SHORTER CATECHISM ON STATE MISSIONS.

Who are our Missionaries in the Big Sandy?

W. A. Gough, W. Thos. Hamlin, J. W. Meeks, L. F. Caudill, C. C. Daves, J. T. Pope, Wm. Dingus, D. Arthur Dailey.

Name some of our mountain Missionaries.

J. W. Crow, S. P. Stapp, A. O. Allison, W. T. Robbins, E. W. Davis, J. H. Broom, Jesse Kilgore, A. C. Hutson, Lewis Lyttle, J. A. McCord, S. B. Richie, F. M. Jones, J. I. Wills, E. C. Nall, Thos. Murrell, John Cunningham, B. M. Lucas, F. C. Helms, L. F. Westbury.

Who are some of our Missionaries in Southern Kentucky?

The Southern Baptist Theological Seminary

LOUISVILLE, KENTUCKY

Next session of eight months opens October 3rd. Excellent equipment; able and progressive faculty; wide range of theological study. If help is needed to pay board, write to Mr. B. Pressley Smith, Treasurer of the Students' Fund. For catalogue or other information, write to

E. Y. MULLINS, President.

W. H. Brummett, J. M. Newport, G. C. Sandusky, T. C. Duke, Wm. Kirtley, F. M. Jones, J. L. Owens, C. D. Chick, T. F. Grier, Z. P. Hamilton, L. J. B. Smith, James L. Dotson

Name some of the Missionaries in Western Kentucky.

J. B. Housley, C. S. Gregston, W. T. Dennington, L. L. Spurlin, T. B. Rouse, W. W. Payne, Jesse Neal, W. W. Williams, G. R. Dodson, H. C. Hopewell, W. R. Goodman, R. Dee Byrd, Albert Halliwell.

Name some of our Missionaries in Northern Kentucky.

J. A. Davis, J. D. Thompson, Owen Williams, C. A. DeVane, W. A. M. Wood, F. P. Gates, J. C. Johnson, S. J. Sparks, R. S. Lennon, O. B. Mitchell, J. S. Thompson, J. W. Black, H. M. Eastes.

Name some of our Missionaries in the Bluegrass.

Clarence Walker, E. J. Caswell, W. C. Sale, J. T. Dougherty, E. B. English, J. H. Ransdell, B. F. Swindler.

Name some of our Missionaries in Louisville.

W. M. Bruce, Harvey Burns, C. H. Bolton, J. C. Greenoe, J. F. Hawkins, W. T. Halstead, B. T. Kimbrough, J. W. Weathersby.

Give the names of some that are Colporters.

B. F. Stamps (deceased), W. H. Jones, J. E. Wood, R. Dee Byrd, F. M. Jones, D. Arthur Dailey, W. Thos. Hamlin, J. S. Wade.

Name some of our Co-operative Evangelists.

W. A. M. Wood, R. A. Barnes, C. S. Gregston, J. L. Dotson, R. Dee Byrd, J. E. Wood, J. S. Wade, S. J. Sparks, W. T. Robbins, W. W. Payne

Name some of the Evangelists

C. D. Stevens, F. R. Walters, J. W. Beagle, Don Q. Smith.

Name some of the women missionaries.

Misses Emma Leachman, Sophia Sutton, Ellie Wofford, Hallie Sorrell, Dulcie Winborne, Maggie Kuhbein and Mattie Wilson.

Name some of the Missionaries who labor among the colored people.

Rev. M. S. Blair, Mrs. M. S. Blair, Mrs. John C. Gough.

Name some colored workers who labor among their own people.

T. Timberlake, J. Francis Wilson, W. P. Offutt, Miss Margaret Givens, Mrs. Bettie

Two Books

You Should Have!

DR. J. H. JOWETT'S

The Whole Armour of God

Each discourse deals with some particular equipment of the Christian Soldier, or with some experience of his on the hard-fought field.

AND

The Pastor His Own Evangelist

Methods, Texts, Seed Thoughts
and Illustrations

WITH AN INTRODUCTION

By J. WILBUR CHAPMAN, D. D.

and a Preliminary Chapter on
Preparing for a Revival

BY

CHARLES L. GOODELL, D. D.

Every pastor should be his own Evangelist is the rooted conviction of this volume. A valuable feature is a series of carefully detailed and actually tested plans, which have proved successful in Evangelistic Seasons.

ORDER TODAY

BOTH FOR \$3.25 POSTPAID

Baptist World Pub. Co.

LOUISVILLE, KY.



This Summer—Where?
ASHEVILLE CALLS YOU

Calls you to an ideal vacation—high up—in the mountains of Western North Carolina. Days full of interest, activity and sport—nights of refreshing comfort and solid sleep.

Renew your health in the clear, cool mountain air. Go camping in the woods—climb the peaks—play golf, tennis—enjoy driving and motoring. Big, fine hotels or quiet, inexpensive places, whichever you prefer.

Let us quote you the lowest round trip fares—furnish time tables, literature and all travel information. Call on nearest agent or write

B. H. TODD, Division Passenger Agent
Starks Bldg., 457 S. Fourth St.
Louisville, Ky.

SOUTHERN
RAILWAY
SYSTEM

Withers.

Who is our Missionary among the foreign population?

Rev. A. Rohde, who labors among the Germans.

These have all given either part or all of their time to the work since November 1, 1916.

What have we done for Church Building?

We have aided in the erection of 29 church houses during the past eight months.

What has been done through the Colportage Department?

We have sold and distributed 362 Bibles, 448 Testaments, 1,894 other books and 138,641 pages of tracts.

Our General Association will meet in Paducah on November 13th. This body was organized to perform functions and to express ideals. Our fathers discovered that previously-existing institutions could not cope with many matters of denominational importance and hence the necessity of an organization to which such matters might be referred. There was a growing Baptist consciousness too great to be confined with-

in the limits of a District Association or a mere society. Our Kentucky Baptist ship was launched on troublous waters in 1837, but it has weathered every storm. She points with pride to her past history, and at present evinces increased vitality. Her sails have been driven forward by the breath of the Almighty.

One of her cardinal doctrines has been "The word of God is the sufficient rule of faith and practice." She has withstood the storm of Deism, Unitarianism, Higher Criticism and all the other Isms. Our experience has caused us to exclaim, "The grass withereth, the flower fadeth; but the word of our God abideth forever."

One of our aggressive elements has ever been Evangelism, or the faithful presentation of a Christ who could save sinners. Our abiding faith in regeneration must ever drive us to earnest efforts to reclaim the lost. Evangelism is as greatly needed to-day as in any period of our history. Human nature is unchanged; the Gospel has not lost its power; regeneration is the rich experience of many; and the people still seek an evangelistic message.

We Supply any Book Published

**OLD BOOKS BOUGHT,
SOLD and EXCHANGED**

**Church and Sunday School
SUPPLIES**

**Two Timely Baptist Books
Parable and Precept**

By J. B. GAMBRELL, D. D.

\$1.00 postpaid.

Edited by E. C. Routh, of the Baptist
Standard. 12 mo; cloth,

Dr. Gambrell is so well known that for the past years his striking editorials and articles have been eagerly looked for and read in the pages of the Baptist Standard and other journals. Dr. Gambrell has an original mind and a distinctive method of ventilating his opinions. Some of his best efforts are here brought together in which he tenders to his brethren sagacious counsel on matters relating to personal life and character as well as on those which relate to Baptist doctrine and polity.

**THE PRESENT DAY
SUNDAY SCHOOL**

By P. E. BORROUGHS, D. D.

12 mo, cloth. \$1.00 postpaid.

Studies in its organization and management.

This is a comprehensive review of the whole question of modern graded Sunday School organization. A detailed study of special tasks and separate departments which, while making for higher efficiency and larger results, do not threaten the unity or integrity of the school as a whole.

**A New Book Just From
Our Press**

**The Life of
Rev. Walter Ellis Powers**

By A. N. WHITE

\$1.00 net postpaid.

I have just read with both profit and pleasure "The Life of Rev. Walter Ellis Powers," by the Rev. A. N. White. The writer had a great subject and he did his work well.

The book is well-bound of 236 pages price \$1.00.

If you have not read this book, get it and read it at once. It is stimulating and inspiring.

**What You Can Do With
Your Will Power**

RUSSELL H. CONWELL

The world owes no man a living, he warns; it must be won. Size yourself up first; find out what you can do best that the world needs doing; use common sense in selecting the way—then concentrate and you must succeed. The author gives incident after incident of men and women who have succeeded—out of 4,043 American millionaires, whose careers he has analyzed, all but twenty started as poor boys.

Fifty Cents Net.

Send All Orders to

BAPTSIT BOOK CONCERN

650 South Fourth Street, LOUISVILLE, KY.

CUMBERLAND COLLEGE



FELIX HALL

BUSINESS DEPARTMENT: Shorthand, typewriting, bookkeeping, etc.
MUSIC: Piano, voice, sight-singing.
ART: Painting, free-hand drawing.
AGRICULTURE: Weekly lectures on soils, fruit-growing, stock-raising, etc.
OTHER ATTRACTIONS: Commodious Buildings, fine Gymnasium, Literary Societies, good Library, excellent Lecture Course.

QUALITY OF OUR WORK.

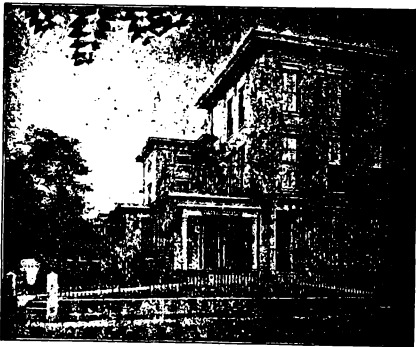
Cumberland College has always had an enviable reputation for thoroughness of work. A letter received recently from the Registrar of the University of Kentucky says: "Count 15 units for entrance. Above this we give full credit for work done at Cumberland College, hour for hour, the same as for work completed in the University of Kentucky." Our work has received equal credit at Ann Arbor, Denison, Brown, Chicago University, and Columbia University.

Write for catalogue to

E. E. WOOD, A. M., President

Williamsburg, Ky.

— A CHAPEL FOR PATRONS —



LEE E. CRALLE

Funeral Director

S. W. Cor. 6th and Chestnut Sts.

Telephone Main 430

LOUISVILLE, - KENTUCKY

Home Phone City 351

**Blum Ornamental
Glass Co.**

INCORPORATED

CHURCH WINDOWS

A SPECIALTY

Correspondence Solicited

640 South Third Street

LOUISVILLE, KENTUCKY